

Additional file for Y. Miyazaki et al.

**Efficient elimination of pancreatic cancer stem cells
by Hedgehog/GLI inhibitor GANT61 in combination
with mTOR inhibition**

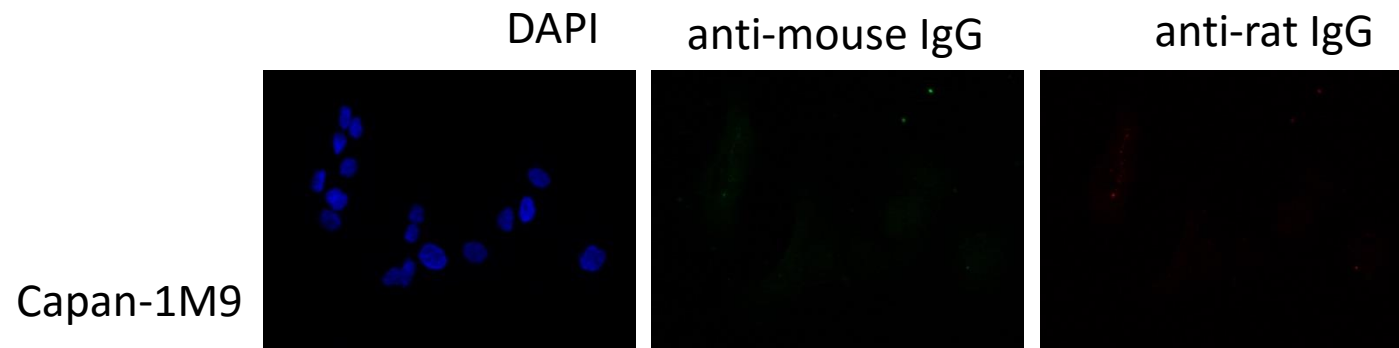
Additional file 1: Table S1

Tumorigenesis of pancreatic cancer cell lines in NOD/SCID mice.

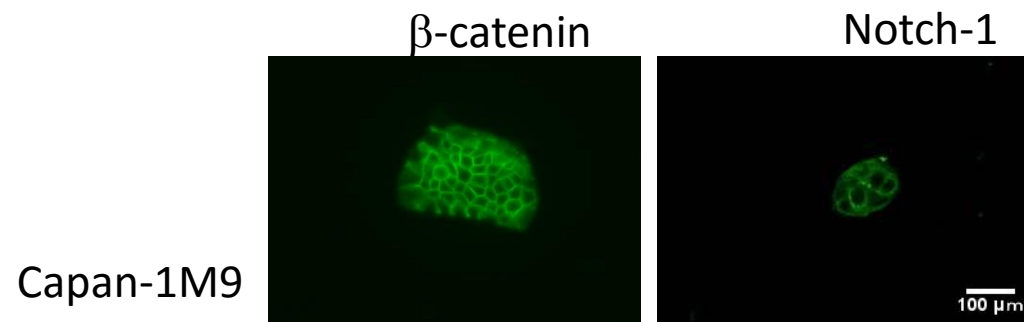
Cell line	Number of cells for implantation	tumorigenesis
Capan-1 CD133 ⁺	1000	5/5
Capan-1 CD133 ⁻	1000	0/5
PANC-1 (unsorted cells)	1000	3/3

A

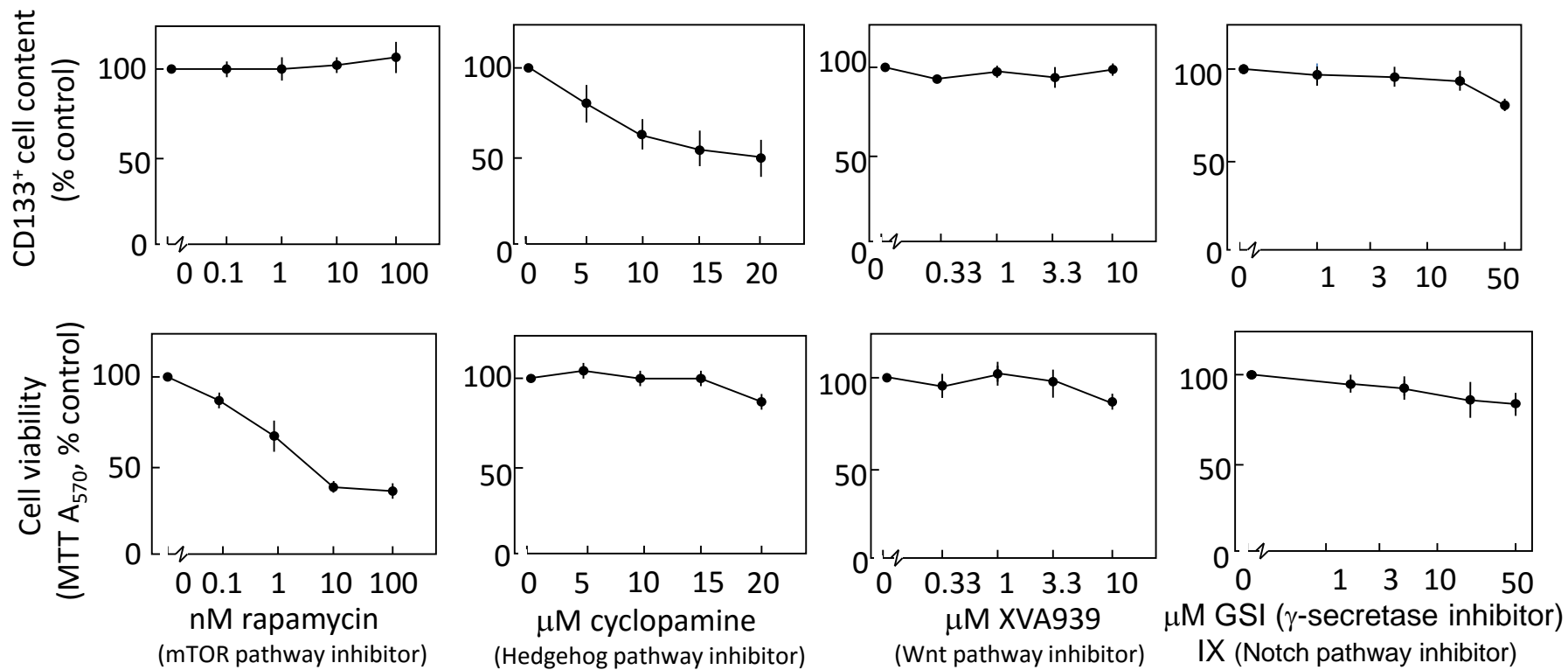
Negative controls (without 1st antibodies)



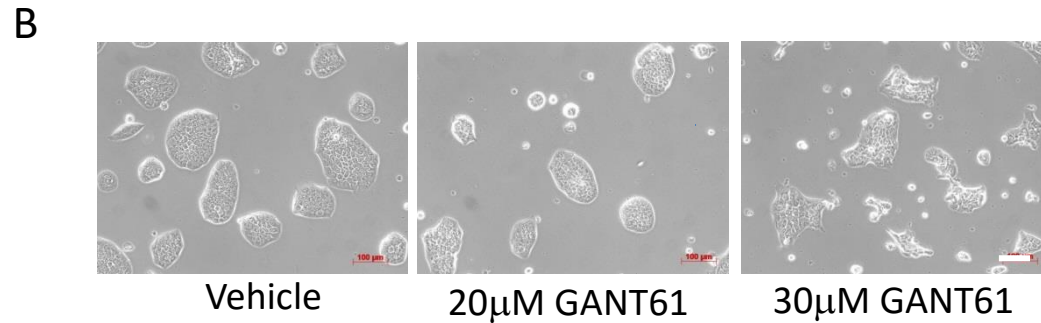
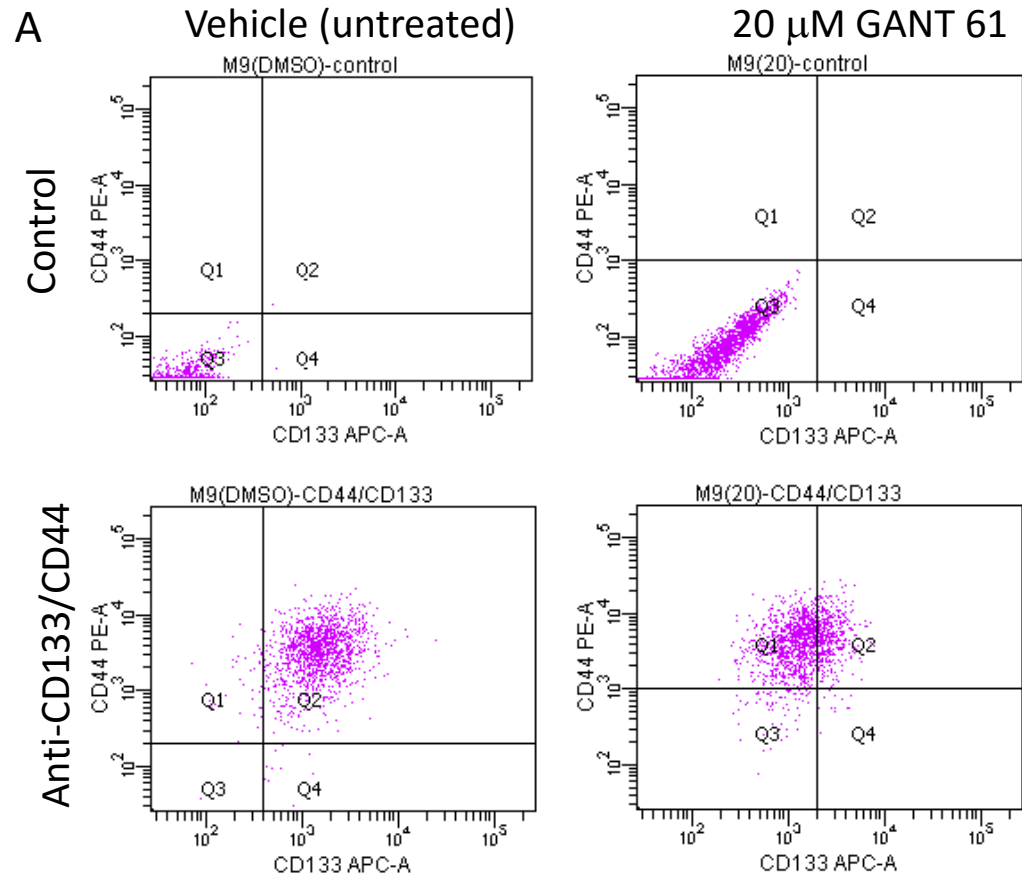
B

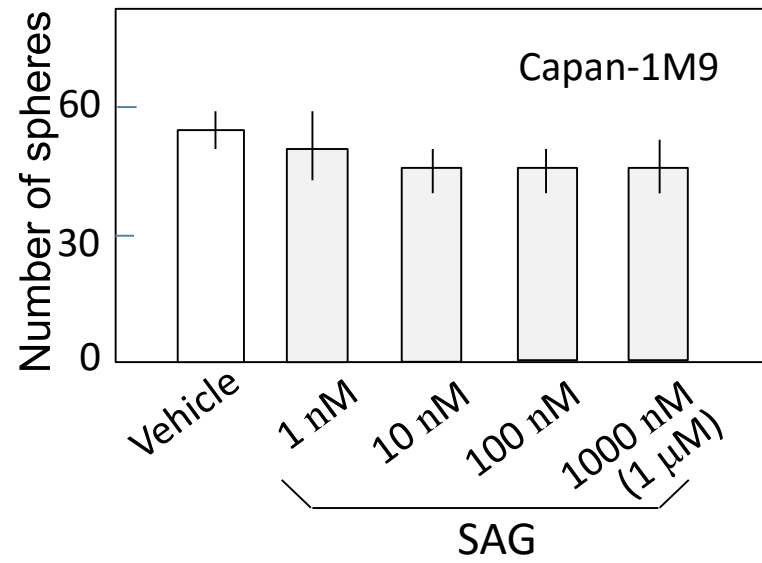


Additional file 1: Figure S1

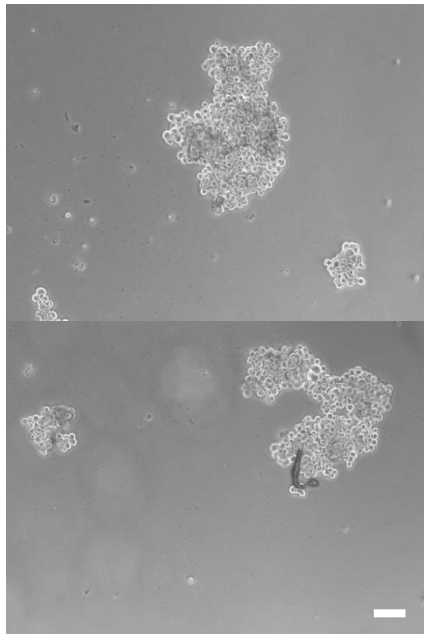


Additional file 1: Figure S2

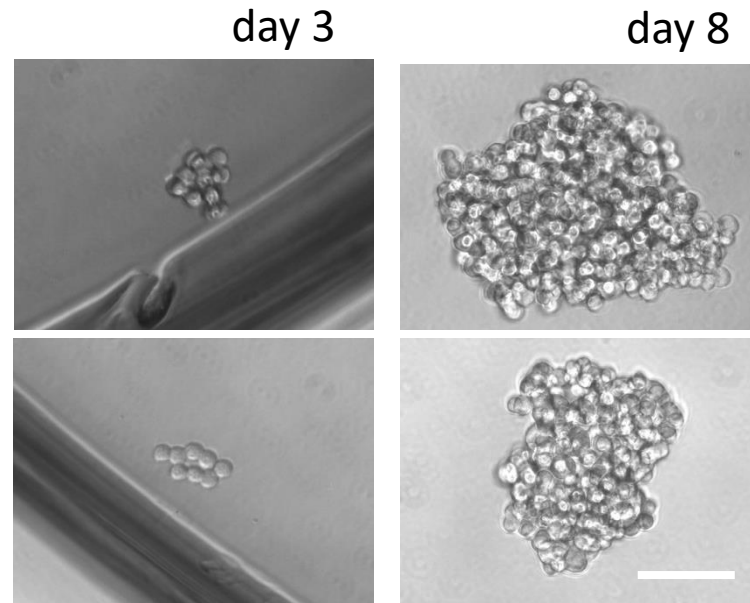




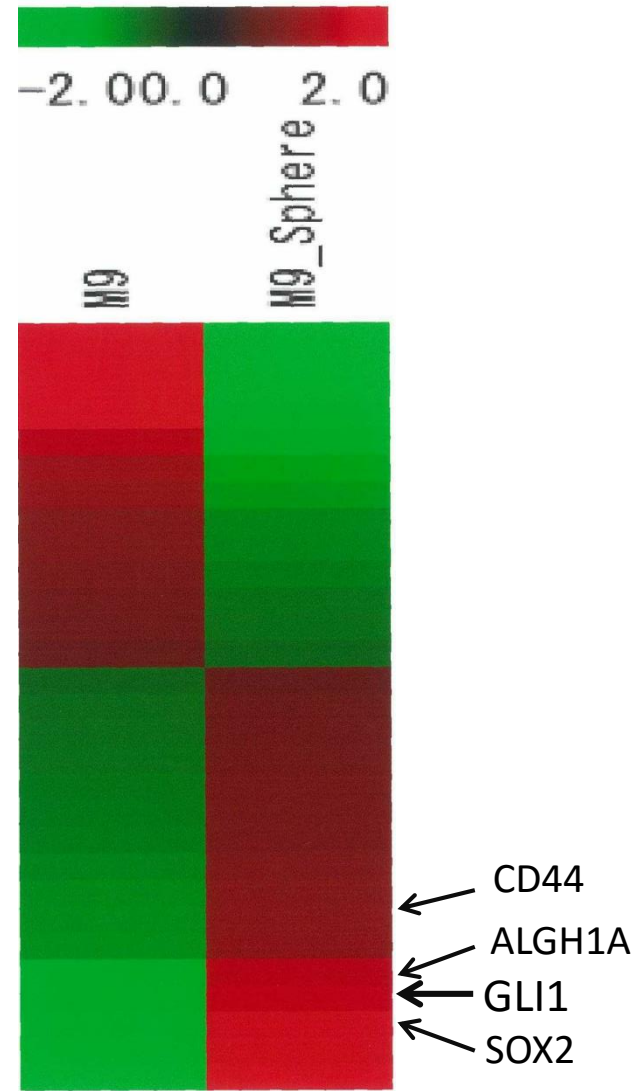
A 10^3 cells/24 well



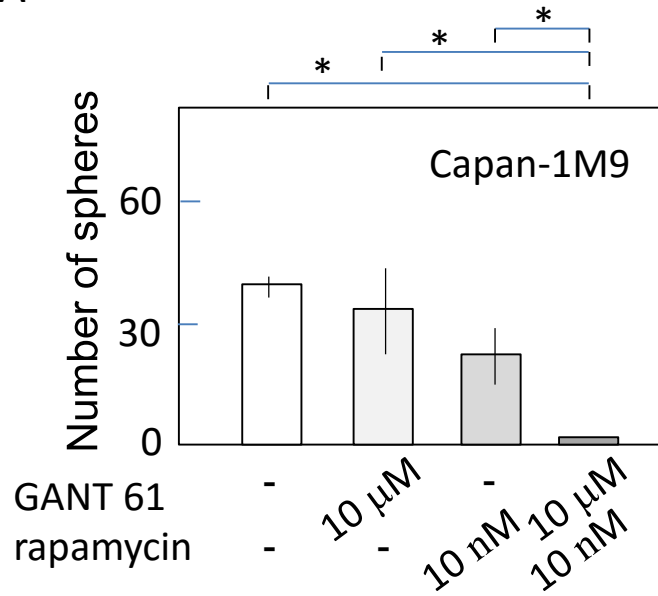
B 1.2 cells/96 well



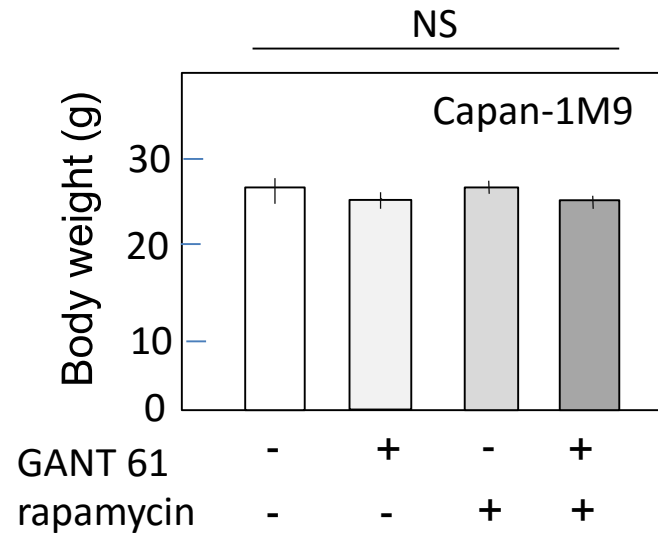
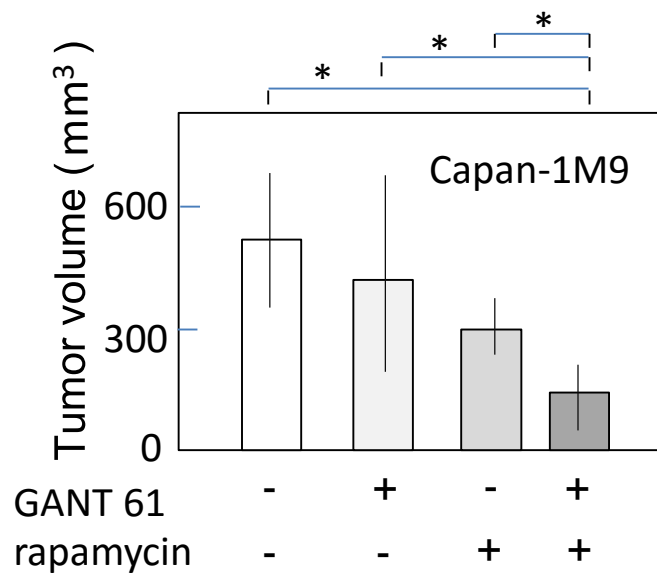
Additional file 1: Figure S5



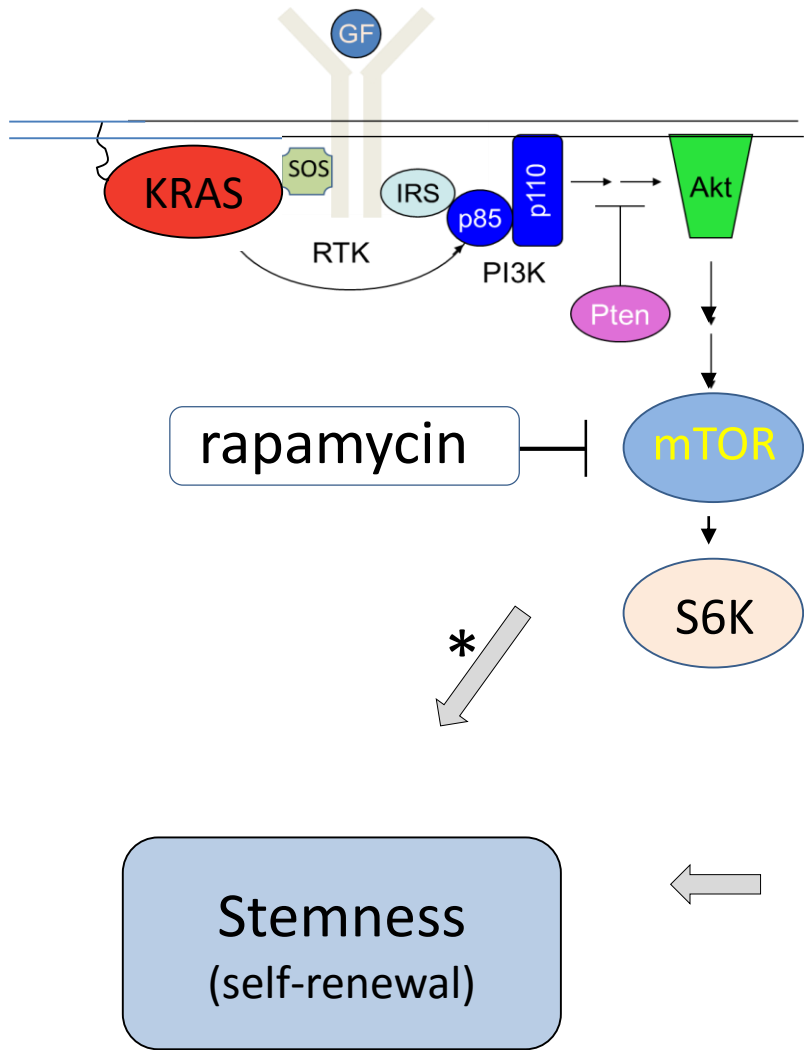
A



B



KRAS/PI3K/Akt/mTOR pathway



Hedgehog pathway

