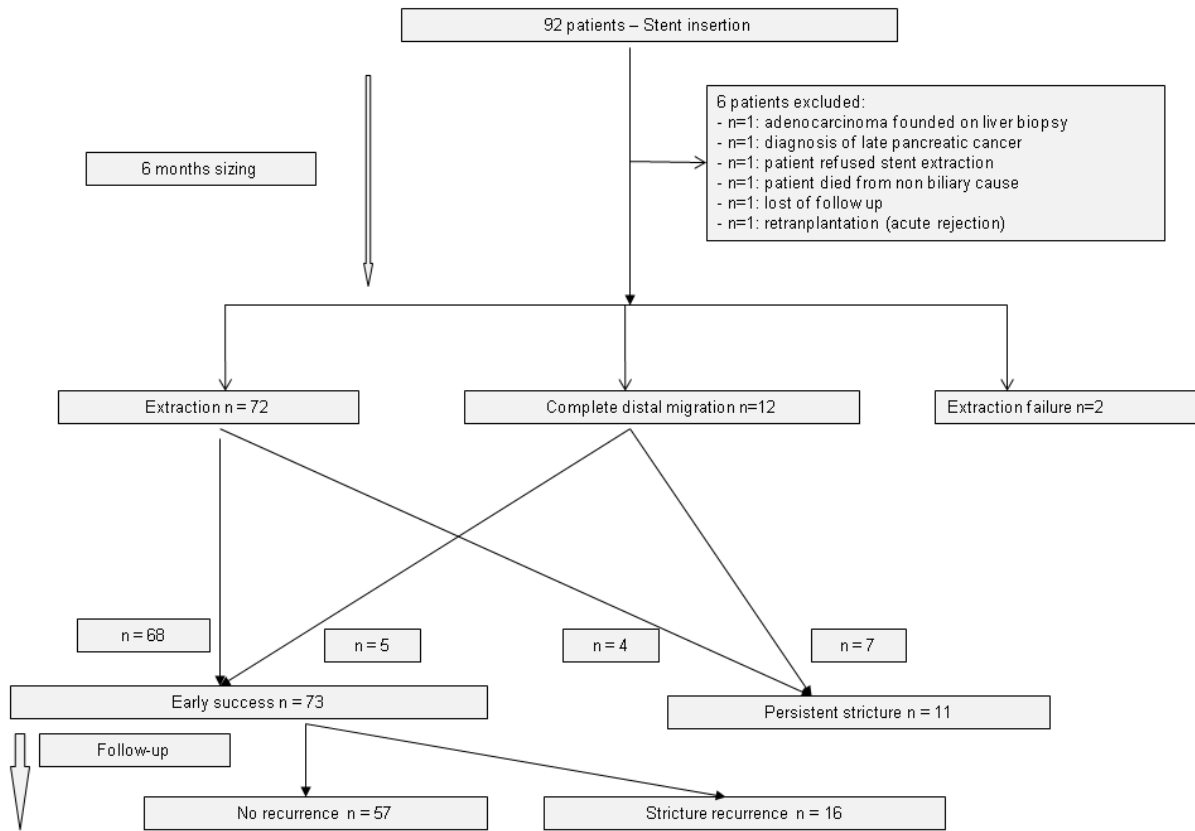


Table 4bis: Univariate analysis of patient's and procedural's characteristics associated with stent migration

		No migration	Migration	p-value	OR	95% IC	
Age		53.7 (\pm 8.1)	54.1 (\pm 13.3)	0.872	1.003	0.956	1.053
Sex	Male	50 (79.4%)	12 (52.2%)	0.013	1 reference		
	Female	13 (20.6%)	11 (47.8%)		3.44	1.26	9.36
Etiology	Liver transplantation	21 (33.3%)	13 (56.5%)	0.006	4.95		
	Chronic pancreatitis	35 (55.6%)	4 (17.4%)		1 reference		
	Post-surgical	7 (11.1%)	6 (26.1%)		6,84	1.62	28.77
N° previous Endoscopic treatments		0.6 (\pm 0.8)	1.2 (\pm 1.5)	0.026	1.587	1.022	2.462
Dilation in a previous procedure	No	51 (86.4%)	12 (63.2%)	0.025	1 reference		
	Yes	8 (13.6%)	7 (36.8%)		3.64	1.14	11.6
Dilatation preceding FCSEMS placement	No	42 (71.2%)	13 (59.1%)	0.3	1 reference		
	Yes	17 (28.8%)	9 (40.9%)		1,71	0.63	4.64
Dilation diameter	6mm	4 (33.3%)	1 (16.7%)	0.615	1 reference		
	8mm	8 (66.7%)	5 (83.3%)		1,94	0.23	16.44
Stricture length		1.5 (\pm 1.0)	1.0 (\pm 0.8)	0.053	0.544	0.276	1.073
FCSEMS length	40x10mm	19 (33.9%)	2 (9.5%)	0.087	1 reference		
	60x10mm	13 (23.2%)	8 (38.1%)		4.91	1.02	23.64
	80x10mm	24 (42.9%)	11 (52.4%)		3.66	0.82	16.27

Table 5 bis: Univariate analysis of patients' or procedure's characteristics associated with early success

		Early success	Persistent stricture	p-value	OR	CI95%	
Age		53.4 (±9.3)	58.4 (±11.8)	0.113	1.058	0.984	1.138
Sex	Male	55 (75.3%)	5 (45.5%)	0.04	1 <i>reference</i>		
	Female	18 (24.7%)	6 (54.5%)		3.55	1.01	12.39
Etiology	Liver transplantation	29 (39.7%)	4 (36.4%)	0.01	2.23		
	Chronic pancreatitis	36 (49.3%)	2 (18.2%)		1 <i>reference</i>		
	Post surgical	8 (11.0%)	5 (45.5%)		9.45	1.78	50.23
Number of previous endoscopic treatment		0.7 (±0.9)	1.4 (±1.9)	0.343	1.529	0.977	2.394
Dilation in a previous procedure	No	54 (83.1%)	7 (63.6%)	0.134	1 <i>reference</i>		
	Yes	11 (16.9%)	4 (36.4%)		2.84	0.75	10.76
Dilatation preceding FCSEMS placement	No	47 (69.1%)	6 (54.5%)	0.34	1 <i>reference</i>		
	Yes	21 (30.9%)	5 (45.5%)		1.87	0.54	6.49
Dilation diameter (mm)	6	5 (33.3%)	0 (0.0%)	0.522	1 <i>reference</i>		
	8	10 (66.7%)	3 (100.0%)		3.67	0.16	84.51
Stricture length		1.4 (±0.9)	1.5 (±1.3)	0.981	1.171	0.622	2.204
FCSEMS length	40x10	20 (30.3%)	1 (11.1%)	0.376	1 <i>reference</i>		
	60x10	17 (25.8%)	2 (22.2%)		1.95	0.23	16.3
	80x10	29 (43.9%)	6 (66.7%)		3.01	0.47	19.4
Migration	No	62 (84.9%)	1 (9.1%)	<0.0001	1 <i>reference</i>		
	Yes	11 (15.1%)	10 (90.9%)		38.04348	6.147	235.4



Flow chart summarizing overall outcomes