

Synthesis and Antimalarial Activity of Mallatojaponin C and Related Compounds

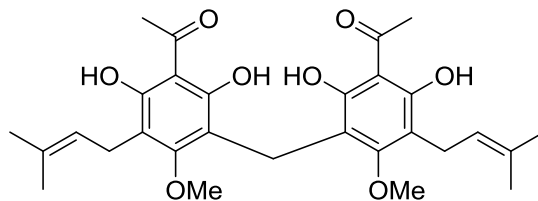
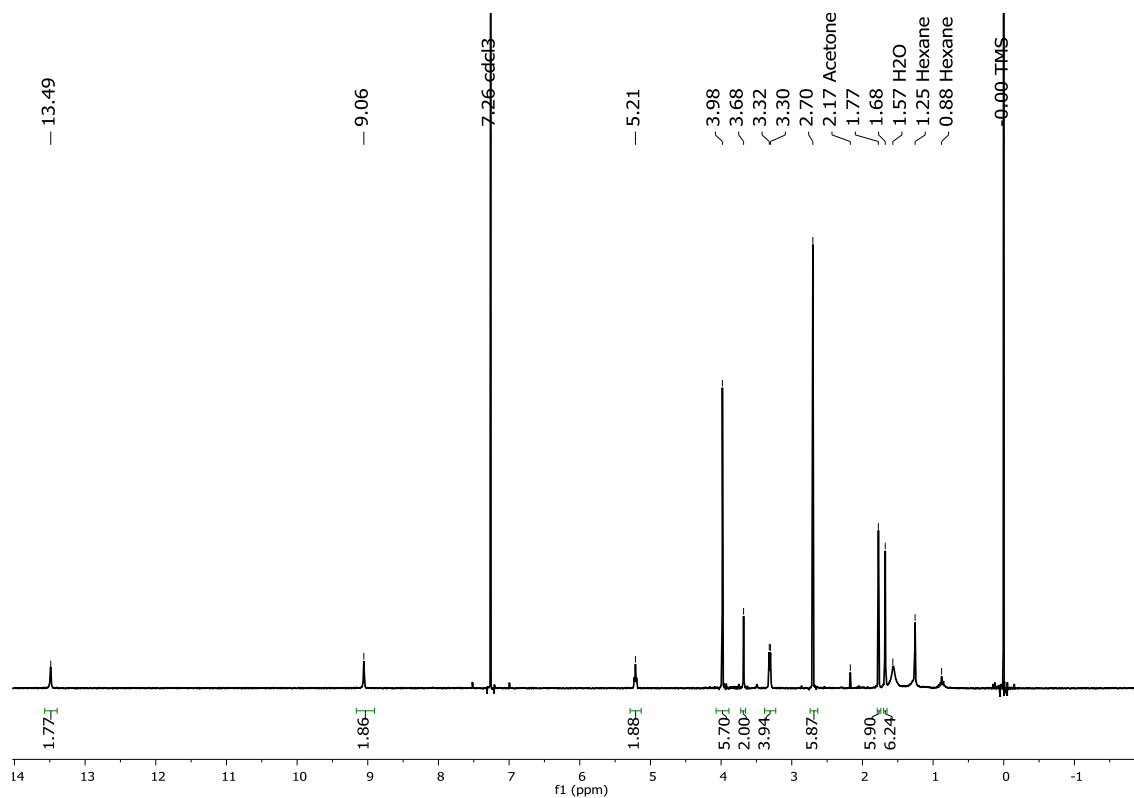
Alexander L. Eaton, Seema Dalal, M. Belen Cassera, Shuqi Zhao, and David G. I. Kingston

Supporting Information

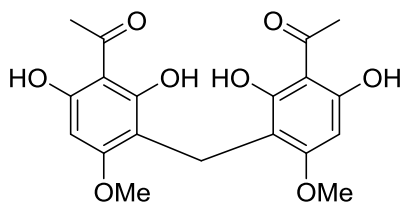
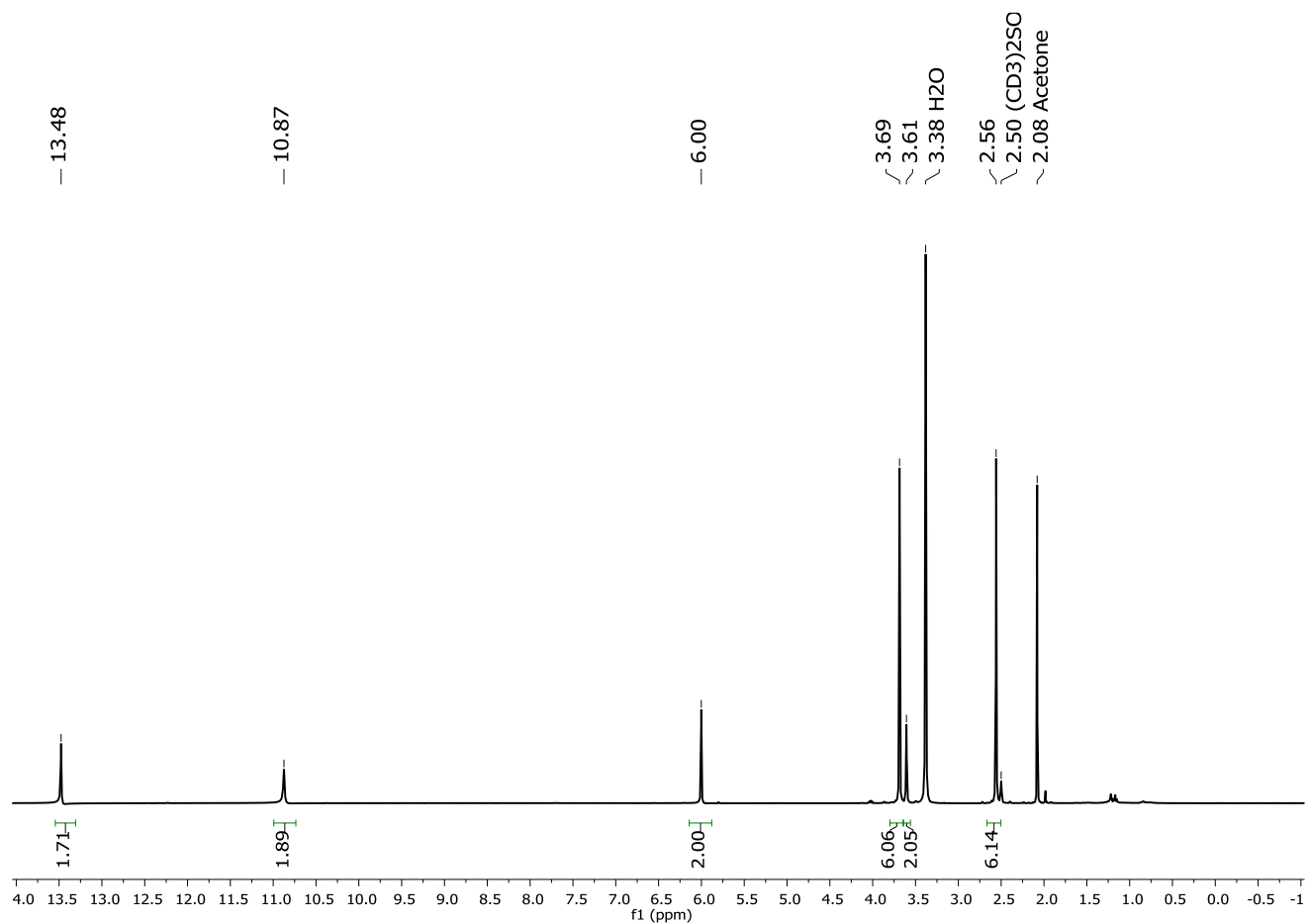
Supporting Information

S1. ^1H NMR of 1 (CDCl_3 , 400 MHz)	3
S2. ^1H NMR of 5 ($(\text{CD}_3)_2\text{SO}$, 400 MHz)	4
S3. ^{13}C NMR of 5 ($(\text{CD}_3)_2\text{SO}$, 100 MHz)	5
S4. ^1H NMR of 6 (CDCl_3 , 400 MHz)	6
S5. ^{13}C NMR of 6 (CDCl_3 , 100 MHz)	7
S6. ^1H NMR of 7 (CDCl_3 , 400 MHz)	8
S7. ^{13}C NMR of 7 (CDCl_3 , 100 MHz)	9
S8. ^1H NMR of 8 ($(\text{CD}_3)_2\text{SO}$, 400 MHz)	10
S9. ^{13}C NMR of 8 ($(\text{CD}_3)_2\text{SO}$, 100 MHz)	11
S10. ^1H NMR of 9 (CDCl_3 , 400 MHz)	12
S11. ^{13}C NMR of 9 (CDCl_3 , 100 MHz)	13
S12. ^1H NMR of 11 (CD_3OD , 400 MHz)	14
S13. ^{13}C NMR of 11 (CD_3OD , 100 MHz)	15
S14. ^1H NMR of 12 (CDCl_3 , 400 MHz)	16
S15. ^{13}C NMR of 12 (CDCl_3 , 100 MHz)	17
S16. ^1H NMR of 13 (CDCl_3 , 400 MHz)	18
S17. ^{13}C NMR of 13 (CDCl_3 , 100 MHz)	19
S18. ^1H NMR of 14 (CD_3OD , 400 MHz)	20
S19. ^{13}C NMR of 14 (CD_3OD , 100 MHz)	21
S20. ^1H NMR of 16 (CD_3OD , 400 MHz)	22
S21. ^{13}C NMR of 16 (CD_3OD , 100 MHz)	23
S22. ^1H NMR of 17 (CDCl_3 , 400 MHz)	24
S23. ^1H NMR of 17 (CD_3OD , 400 MHz)	25
S24. ^{13}C NMR of 17 (CD_3OD , 100 MHz)	26
S25. ^1H NMR of 18 (CD_3OD , 400 MHz)	27
S26. ^{13}C NMR of 18 (CD_3OD , 100 MHz)	28
S27. ^1H NMR of 19 (CDCl_3 , 500 MHz)	29
S28. HPLC of 11	30
S29. HPLC of 12	31
S30. HPLC of 13	32
S31. HPLC of 16	33
S32. HPLC of 17	34
S33. HPLC of 18	35

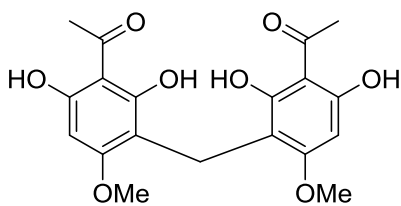
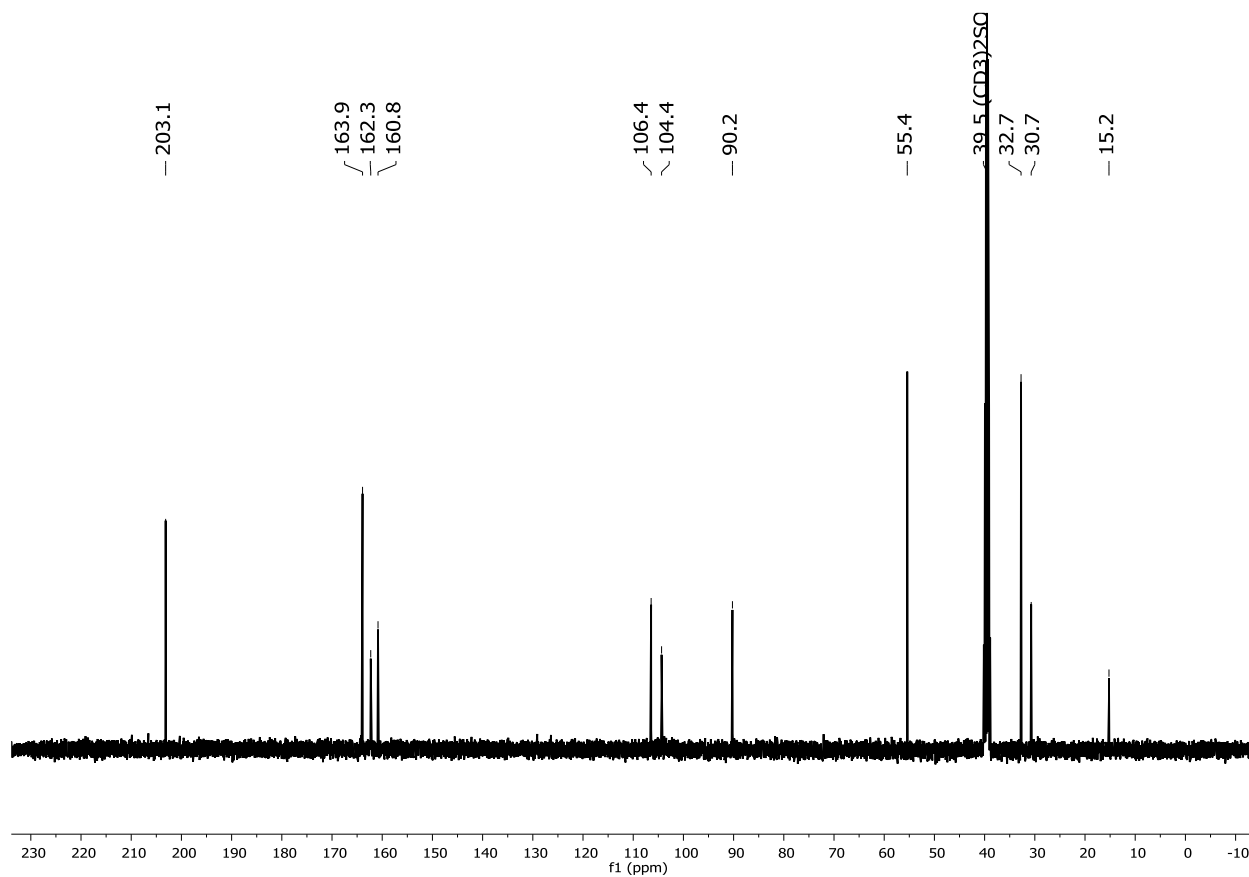
S3. ¹H NMR of **1** (CDCl₃, 400 MHz)



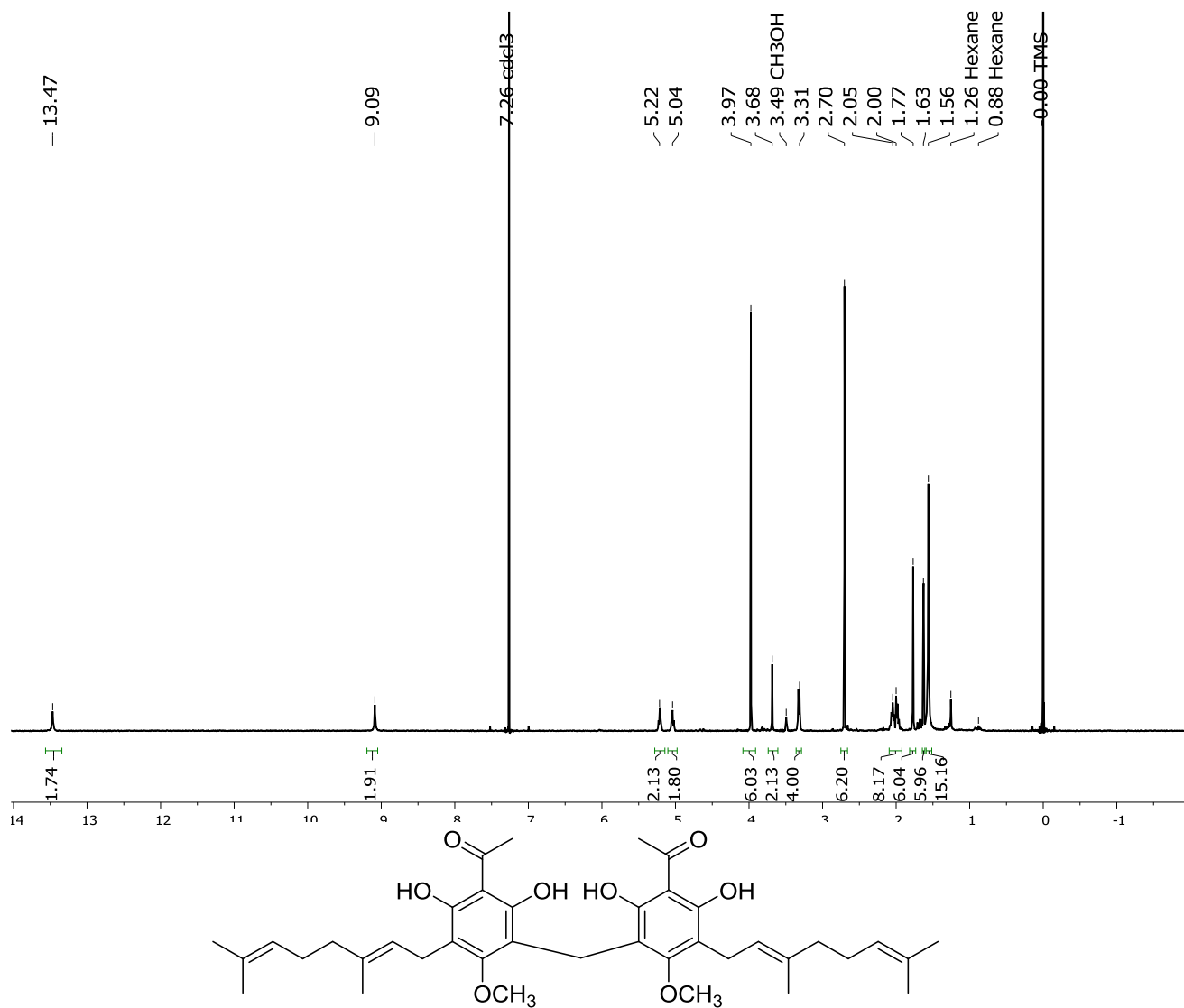
S4. ^1H NMR of **5** ($(\text{CD}_3)_2\text{SO}$, 400 MHz)



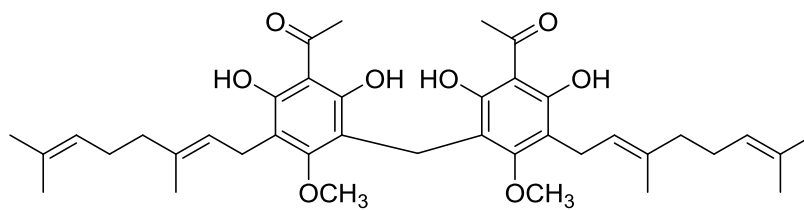
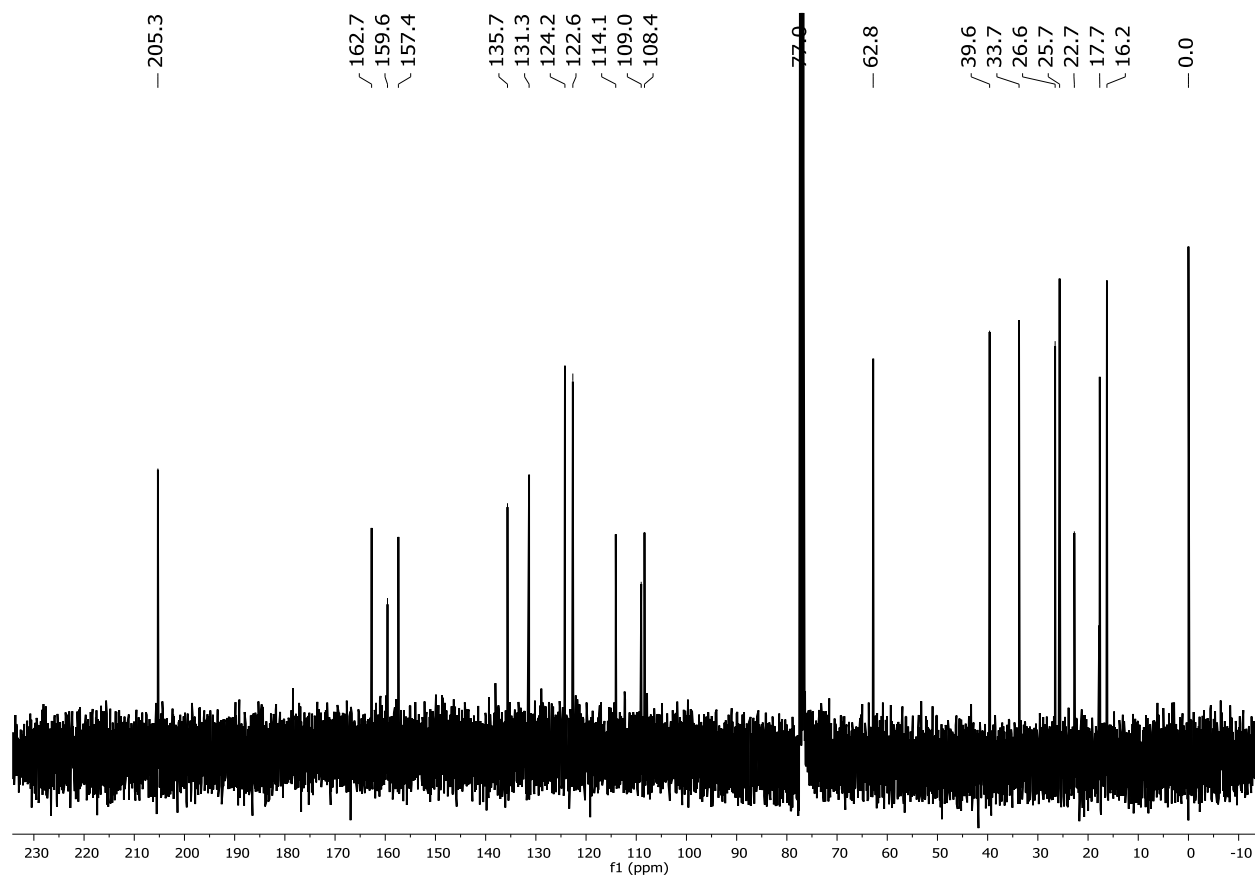
S5. ^{13}C NMR of **5** ($(\text{CD}_3)_2\text{SO}$, 100 MHz)



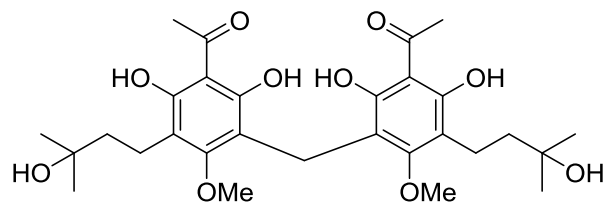
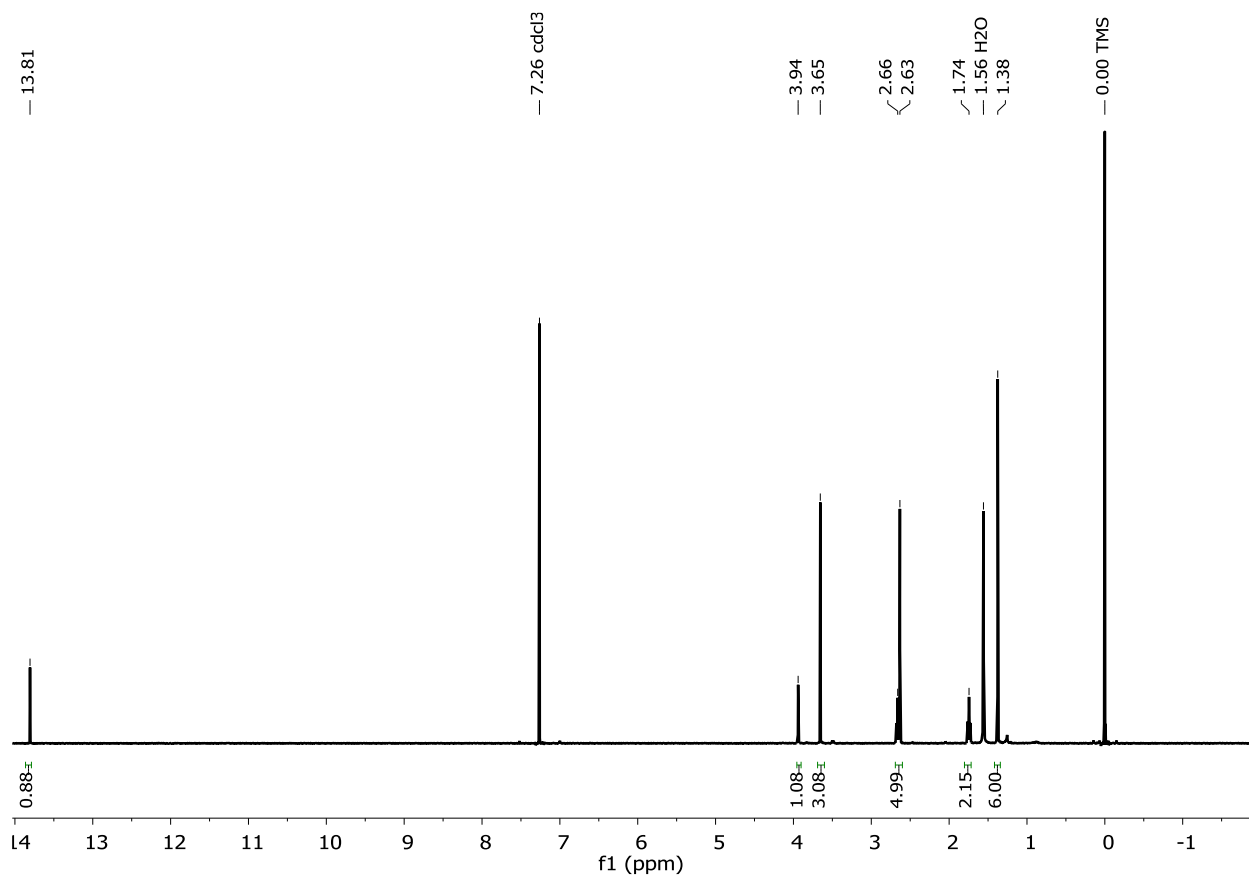
S6. ¹H NMR of **6** (CDCl₃, 400 MHz)



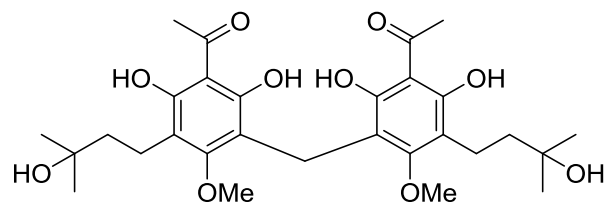
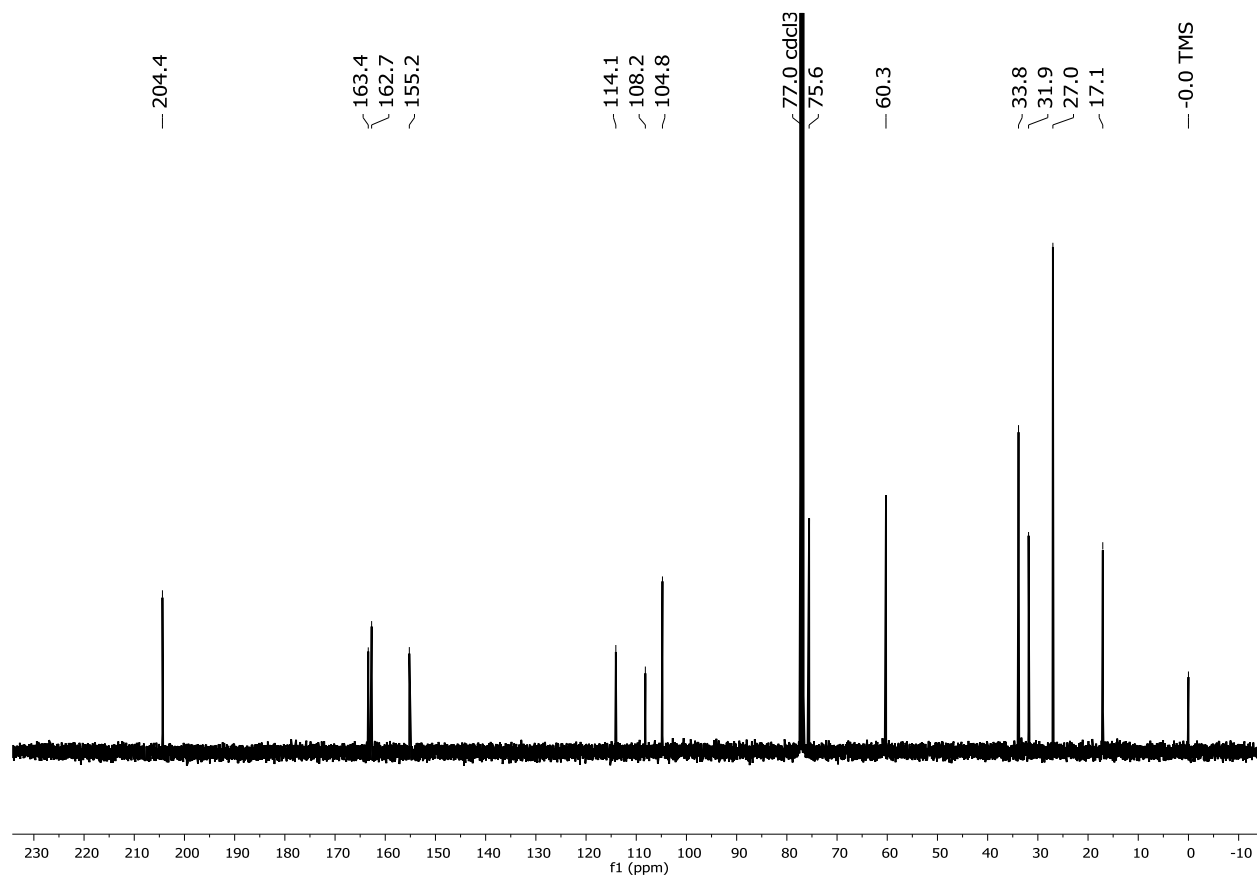
S7. ^{13}C NMR of **6** (CDCl_3 , 100 MHz)



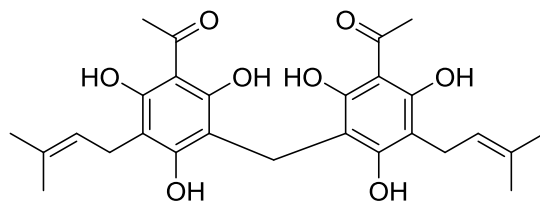
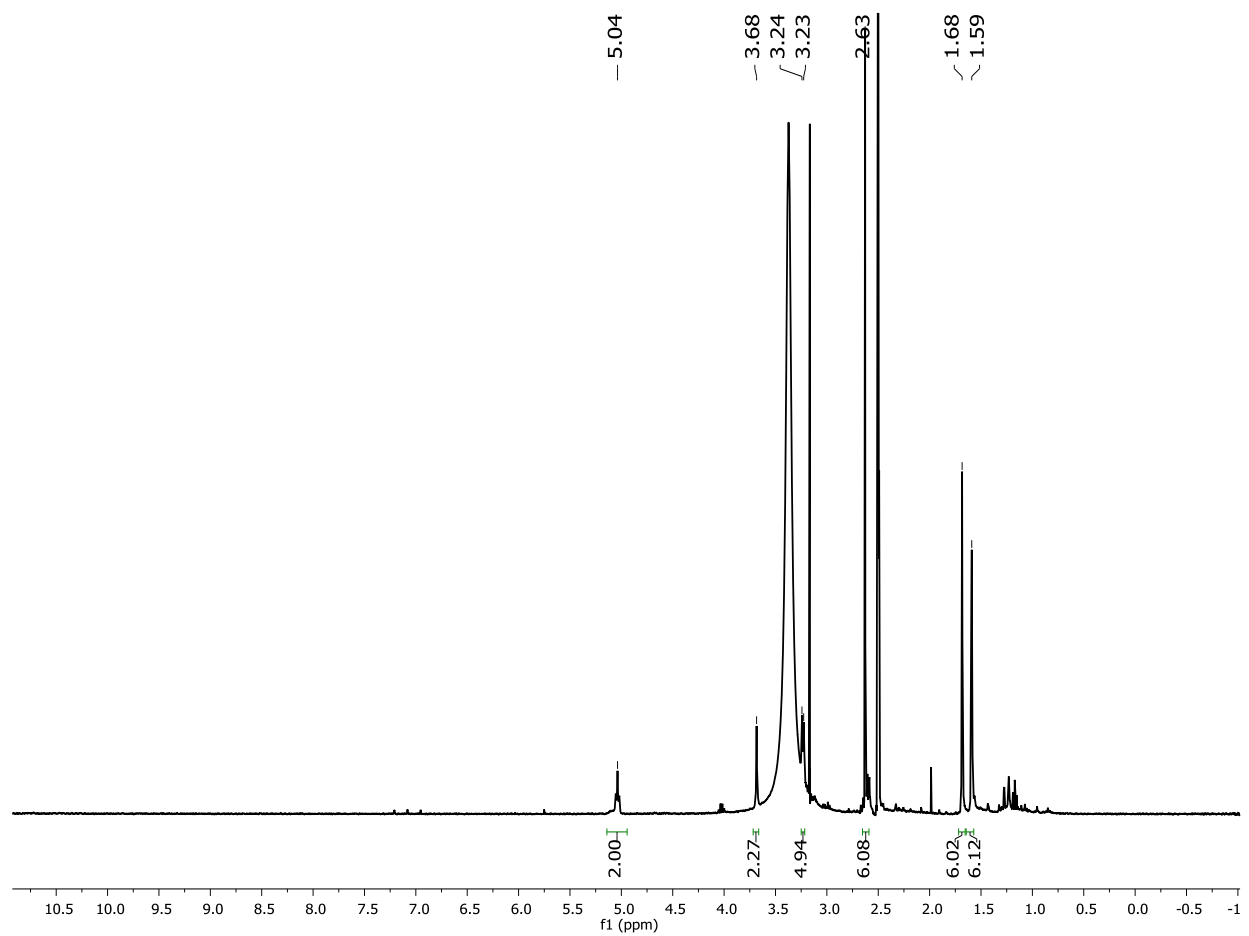
S8. ^1H NMR of **7** (CDCl_3 , 400 MHz)



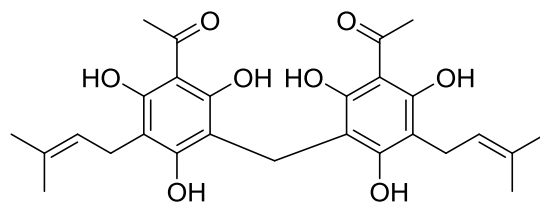
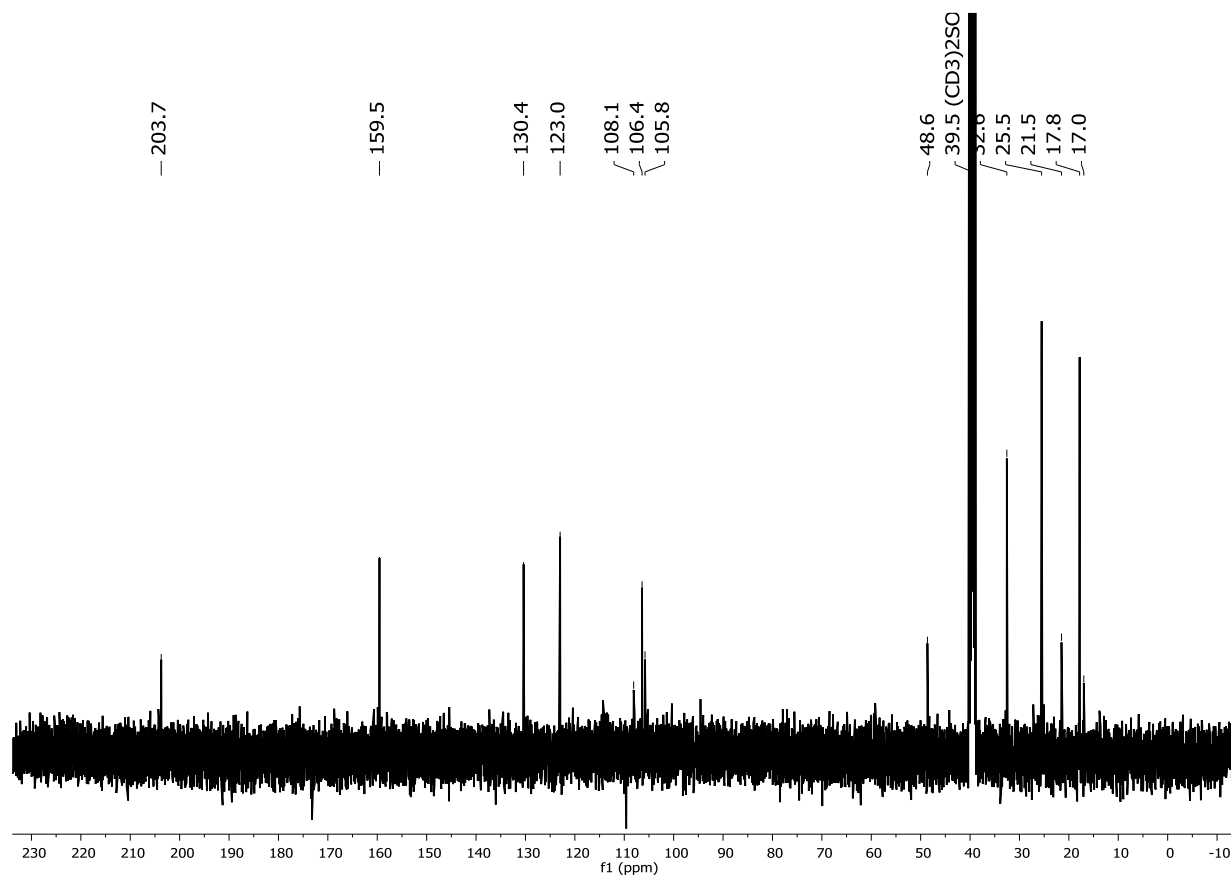
S9. ^{13}C NMR of **7** (CDCl_3 , 100 MHz)



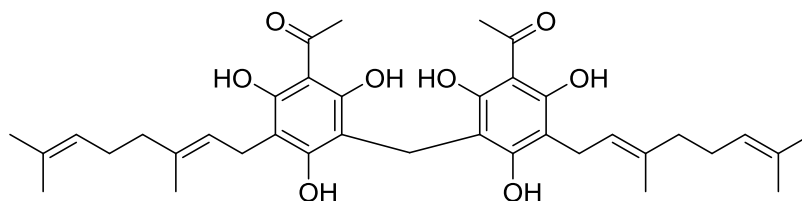
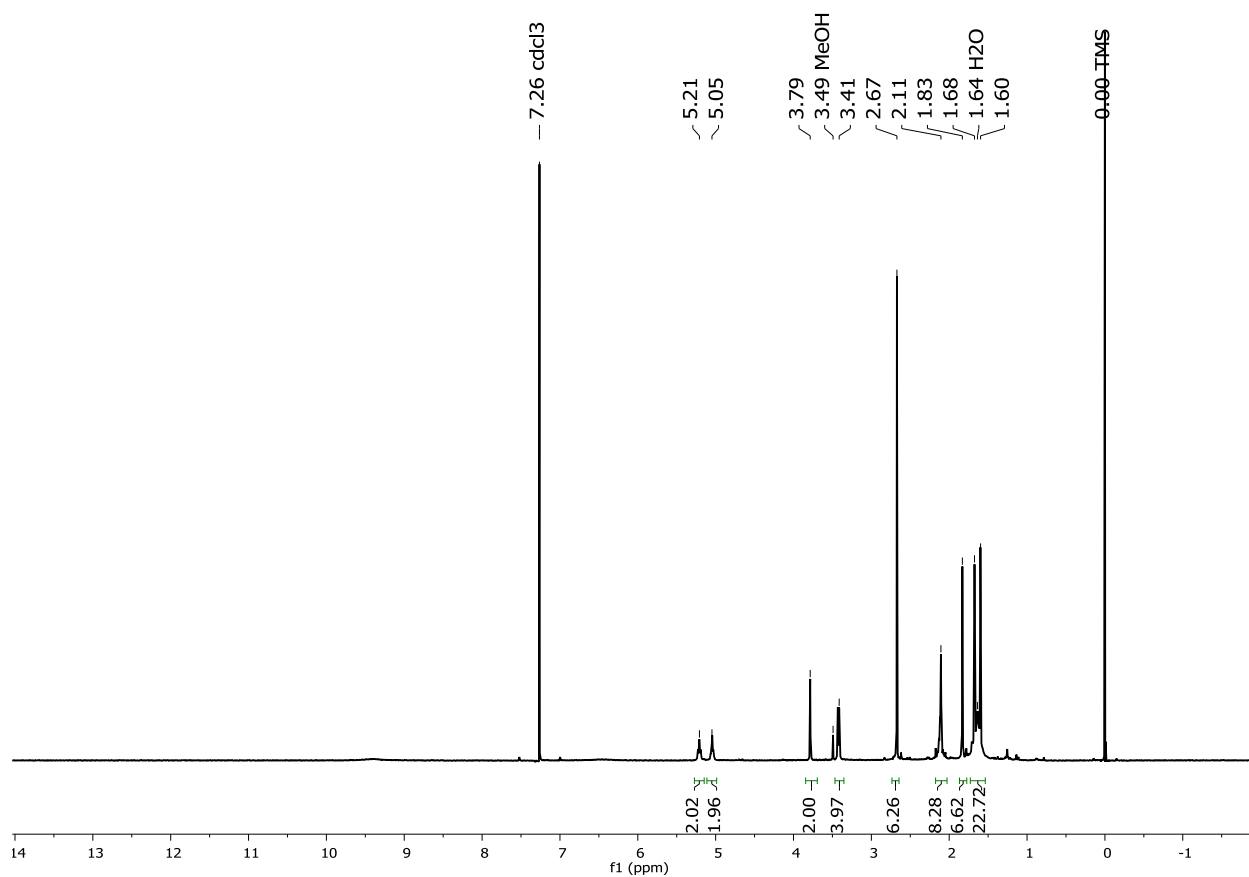
S10. ^1H NMR of **8** ($(\text{CD}_3)_2\text{SO}$, 400 MHz)



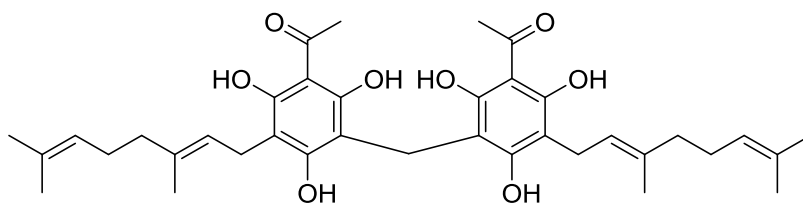
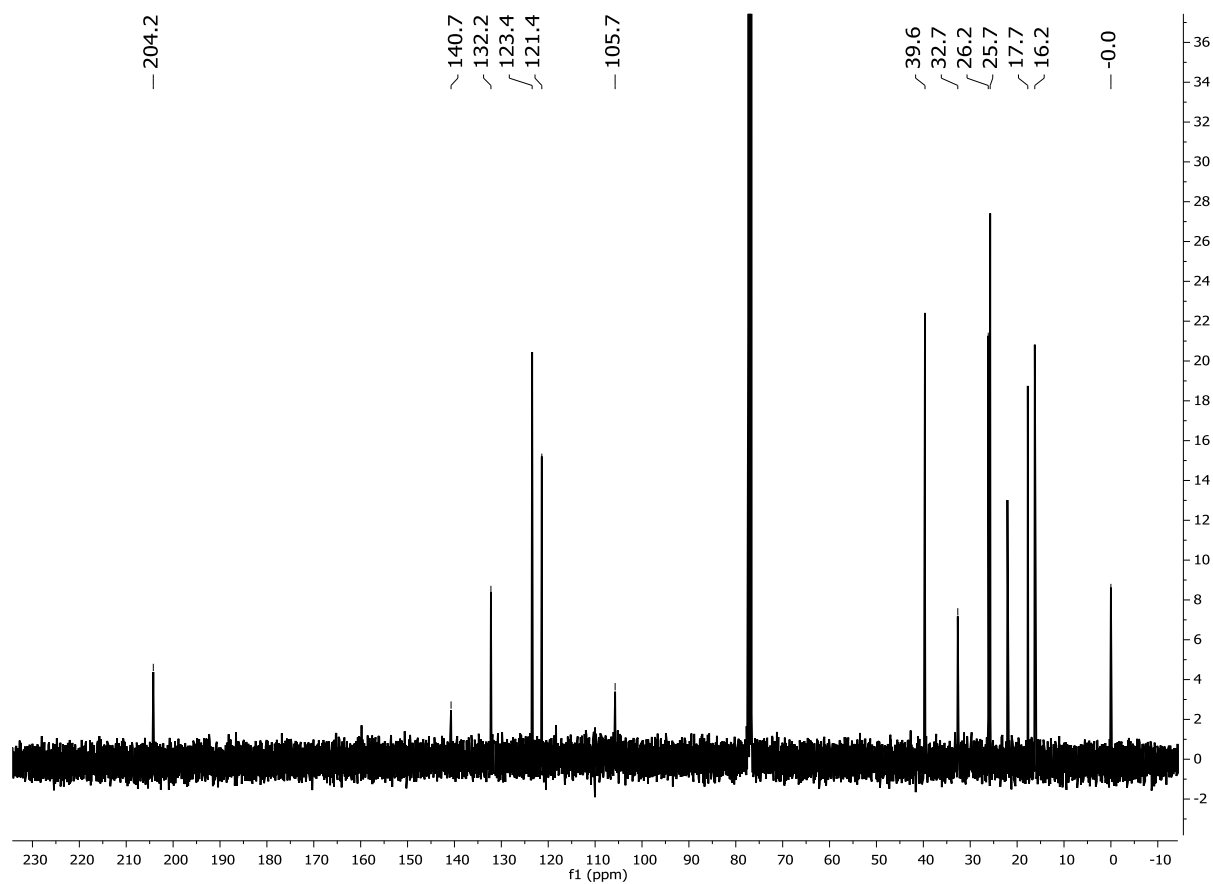
S11. ^{13}C NMR of **8** ($(\text{CD}_3)_2\text{SO}$, 100 MHz)



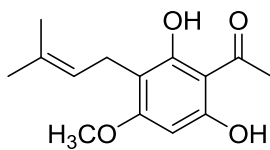
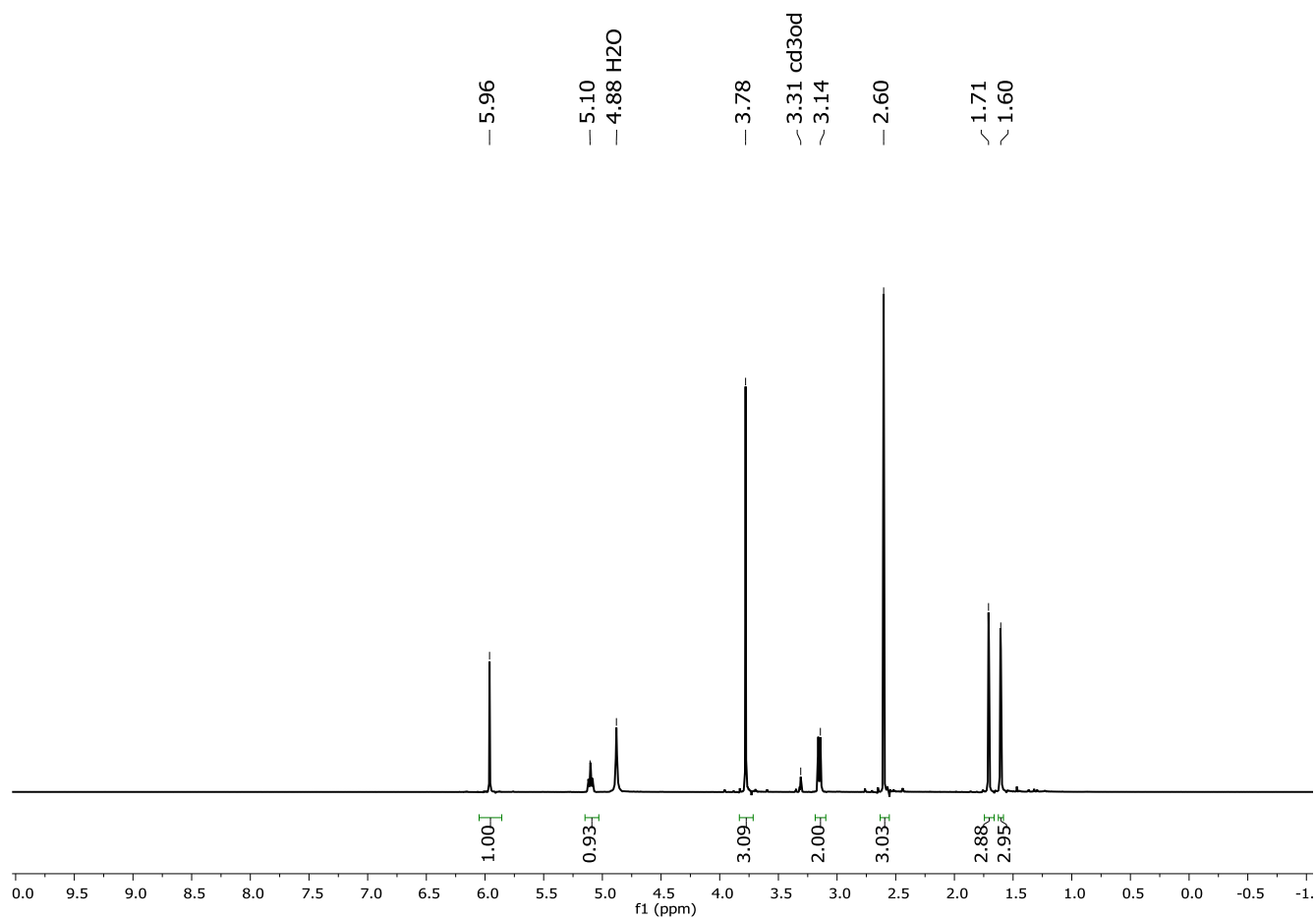
S12. ^1H NMR of **9** (CDCl_3 , 400 MHz)



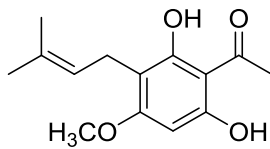
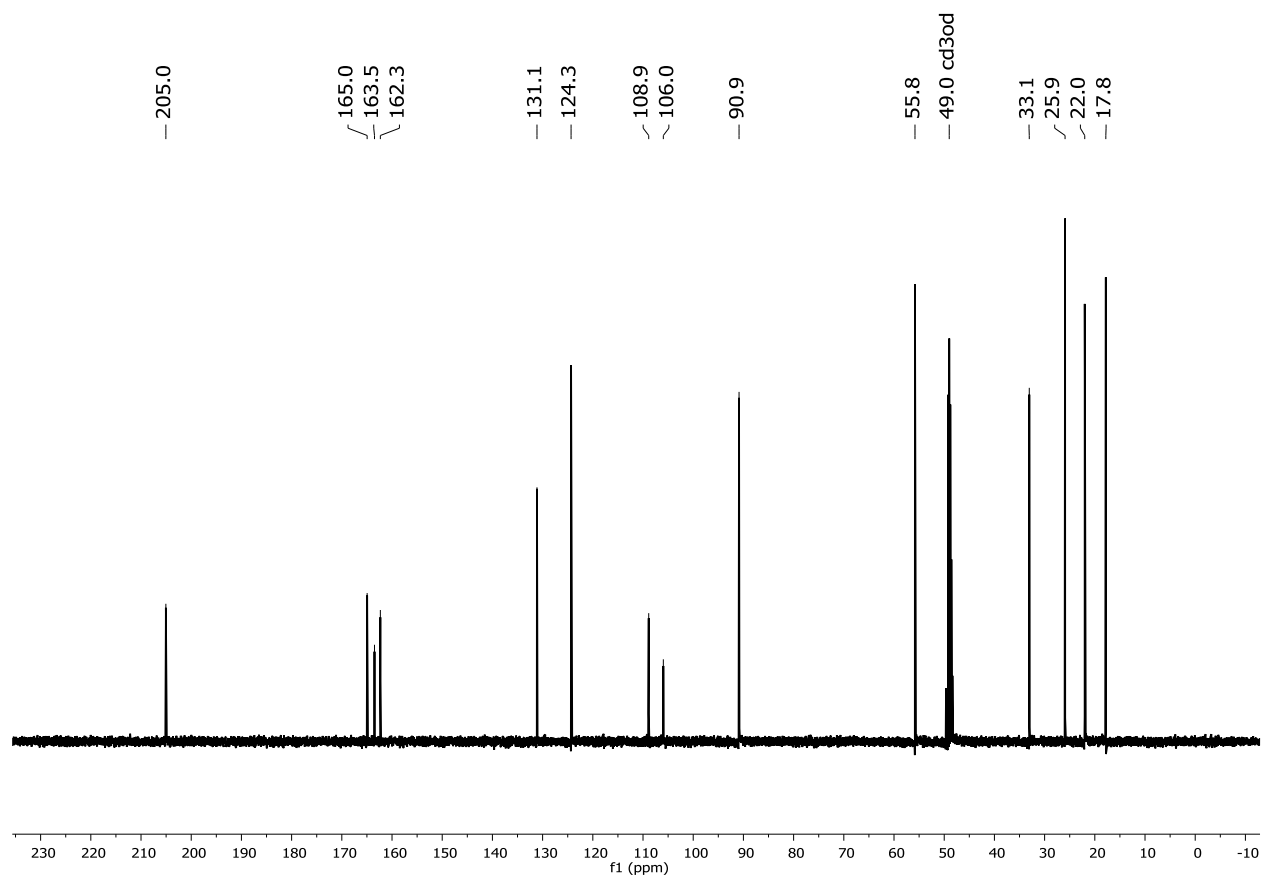
S13. ^{13}C NMR of **9** (CDCl_3 , 100 MHz)



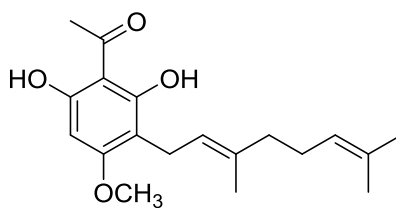
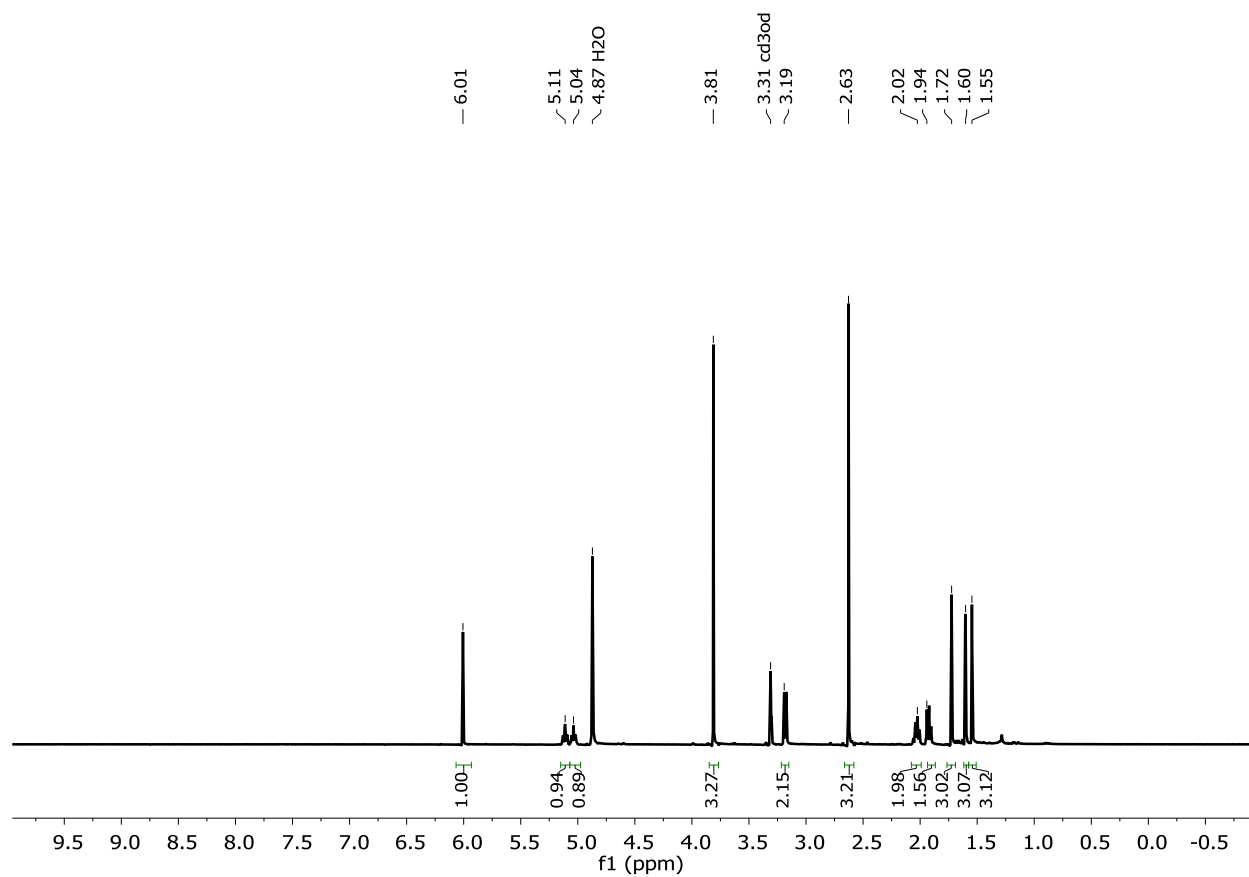
S14. ^1H NMR of **11** (CD_3OD , 400 MHz)



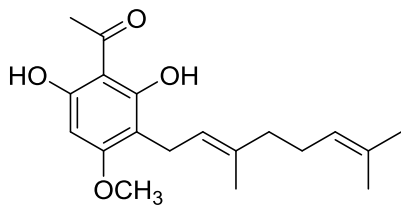
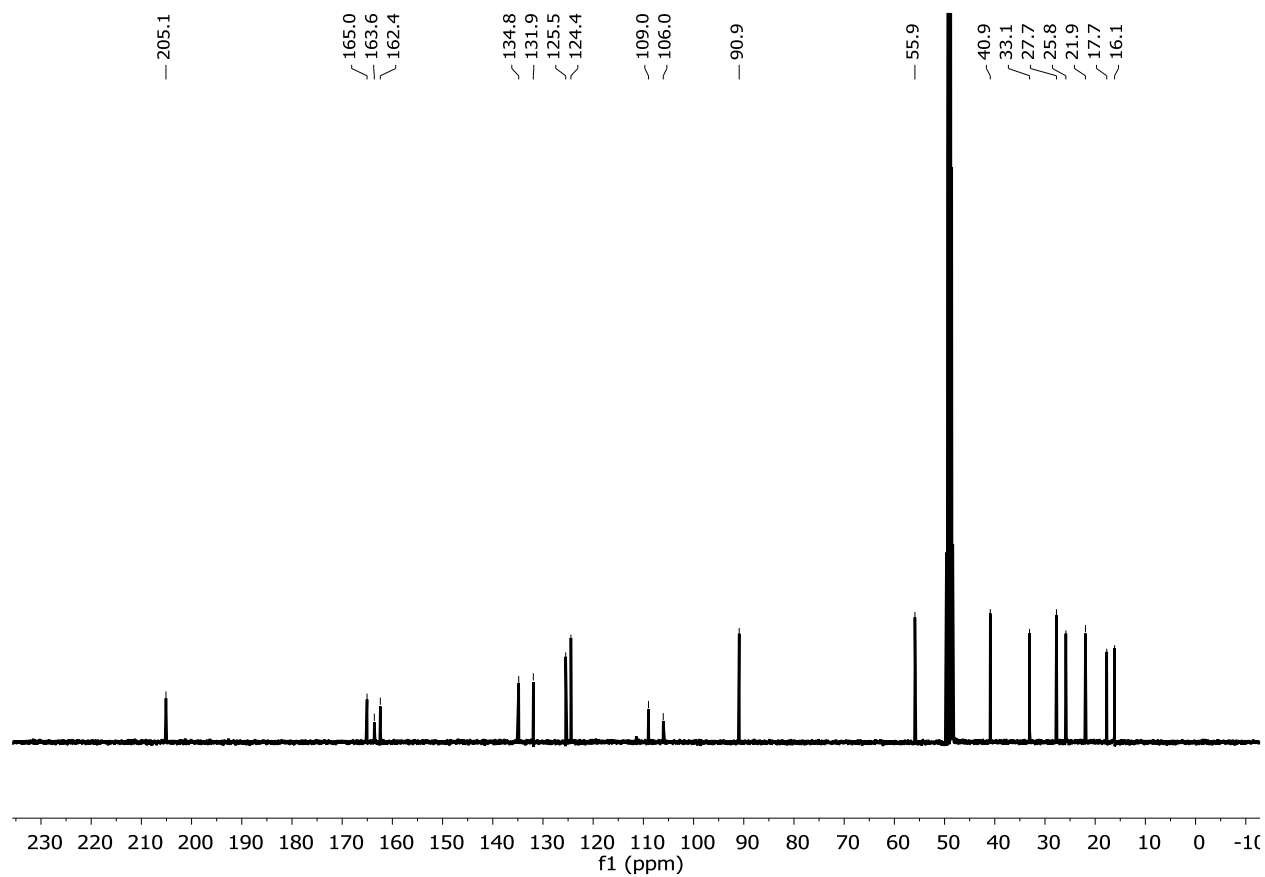
S15. ^{13}C NMR of **11** (CD_3OD , 100 MHz)



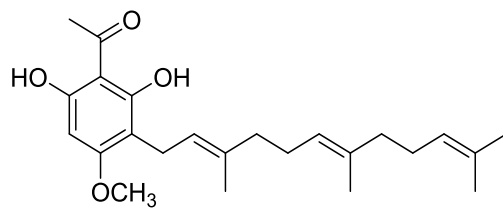
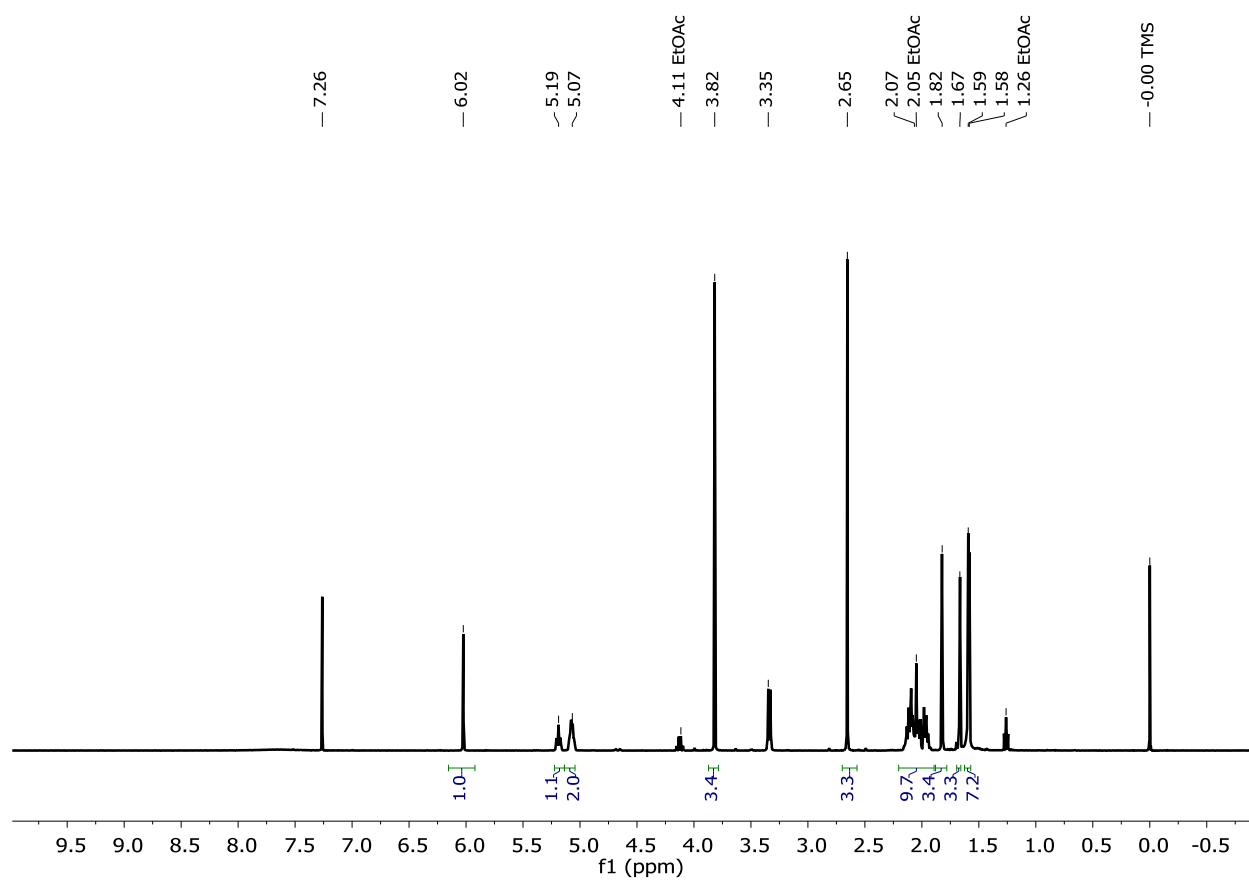
S16. ^1H NMR of **12** (CDCl_3 , 400 MHz)



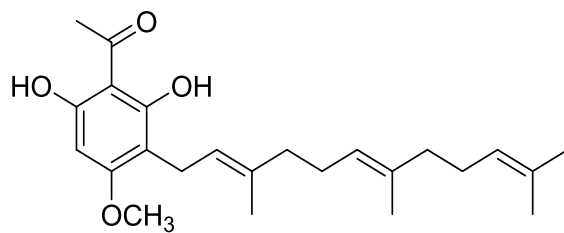
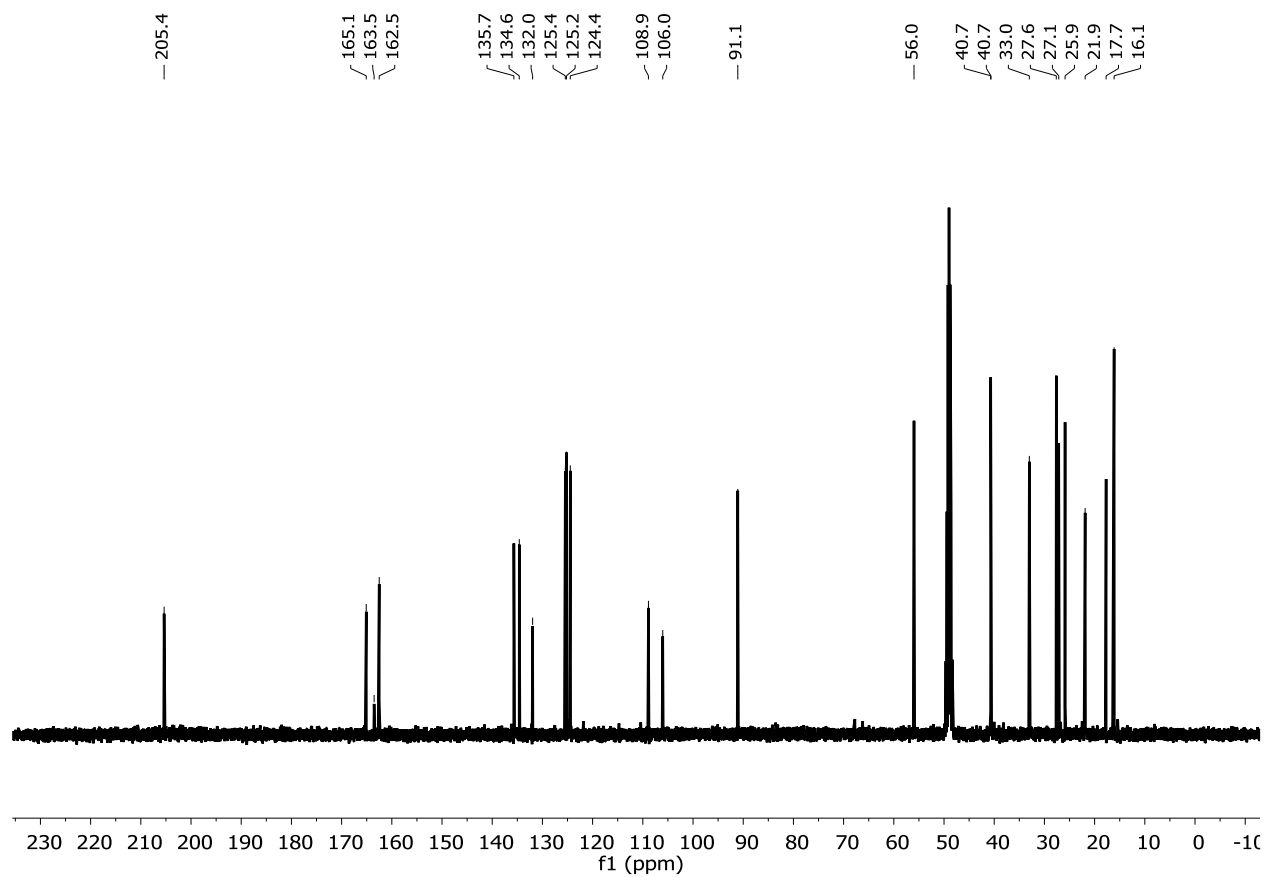
S17. ^{13}C NMR of **12** (CDCl_3 , 100 MHz)



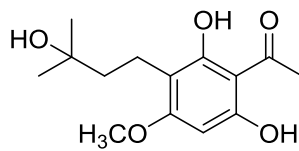
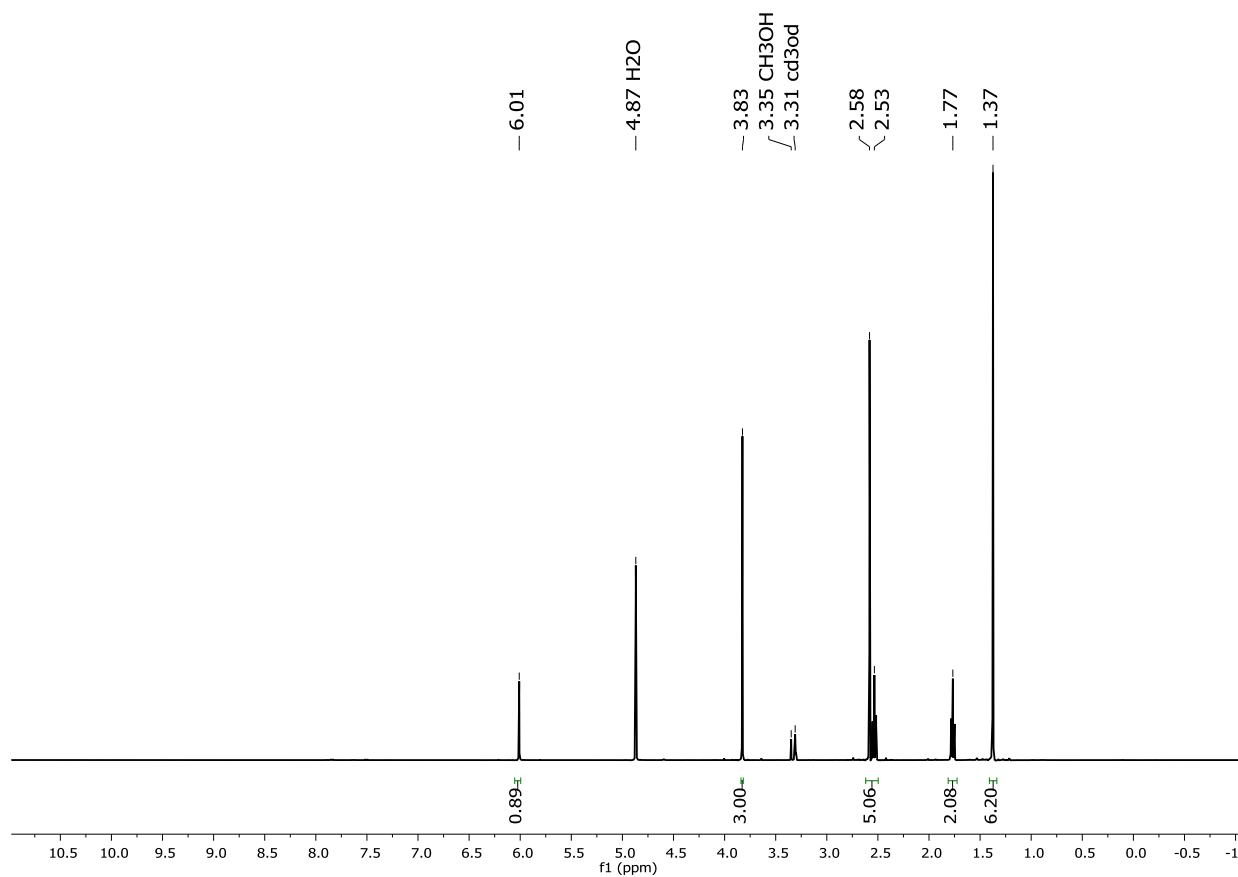
S18. ^1H NMR of **13** (CDCl_3 , 400 MHz)



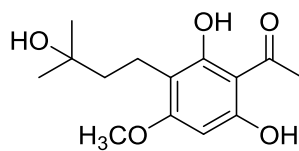
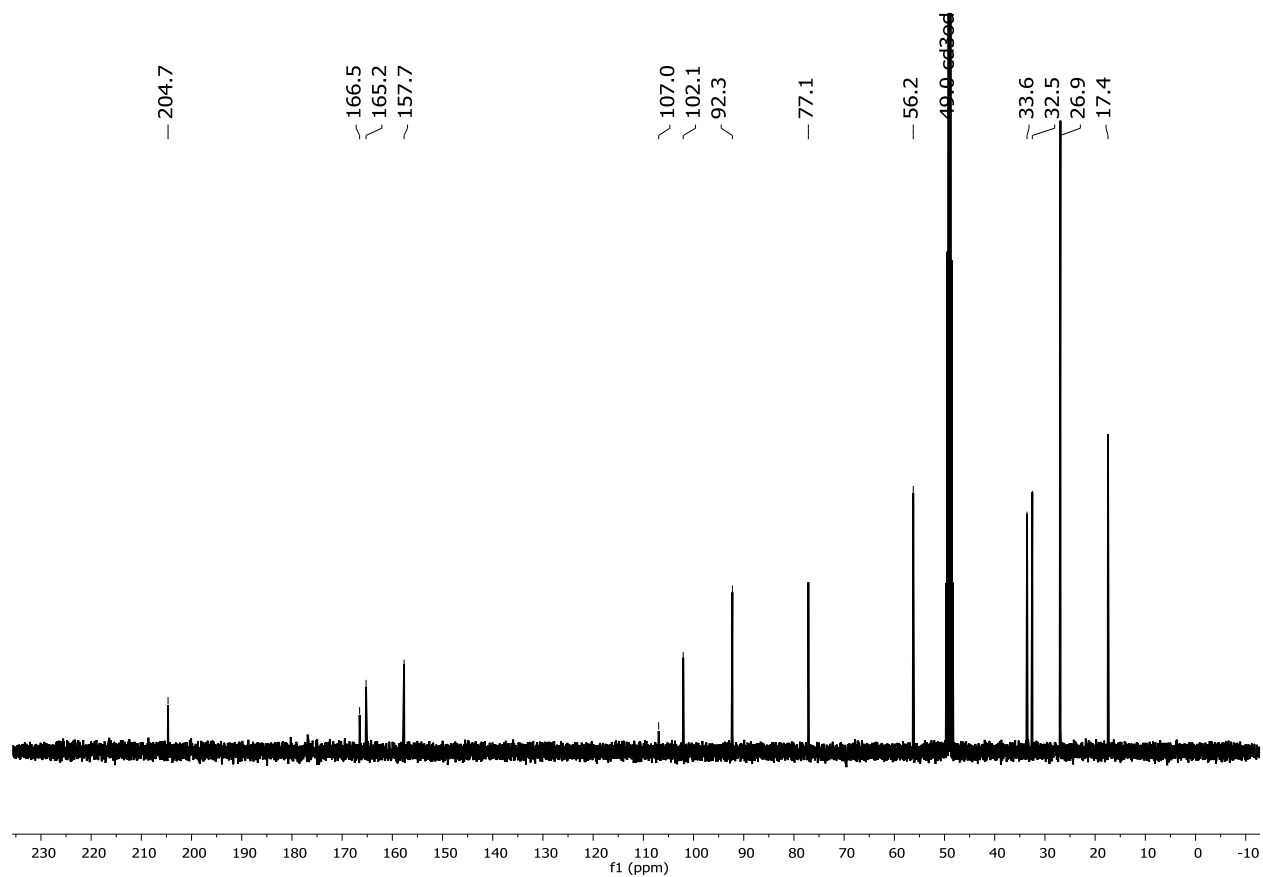
S19. ^{13}C NMR of **13** (CDCl_3 , 100 MHz)



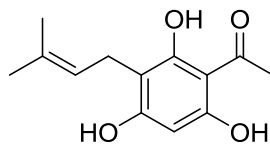
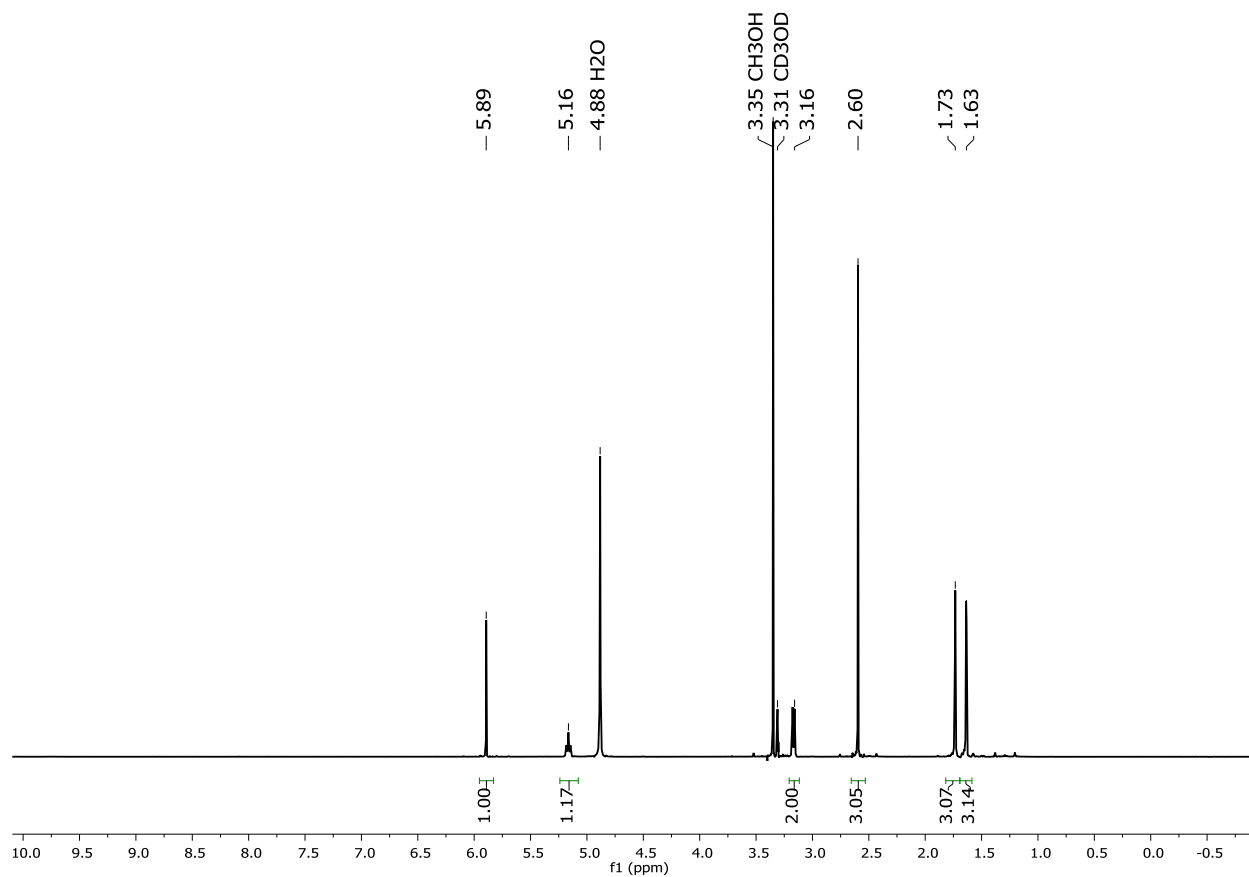
S20. ^1H NMR of **14** (CD_3OD , 400 MHz)



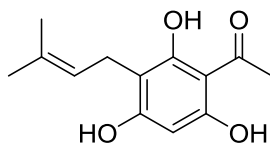
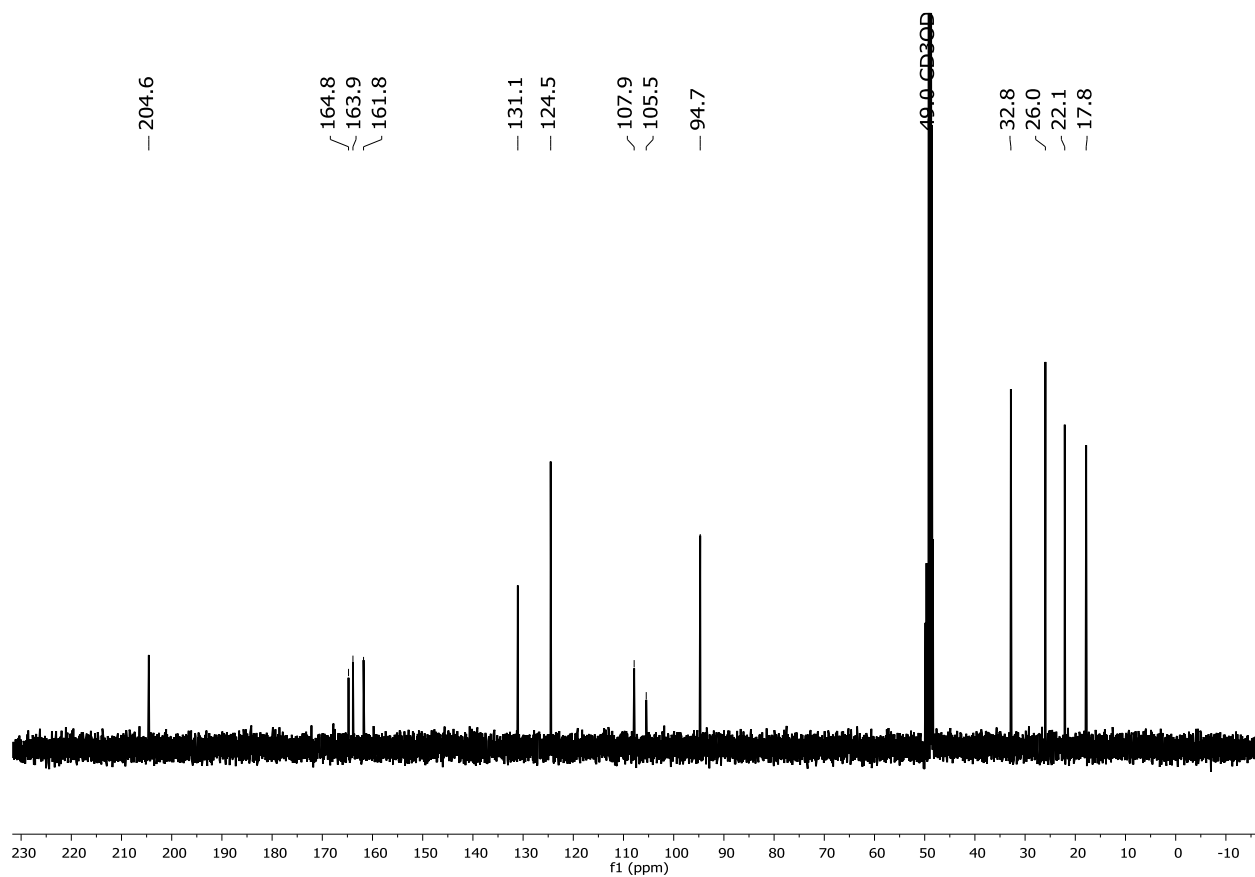
S21. ^{13}C NMR of **14** (CD_3OD , 100 MHz)



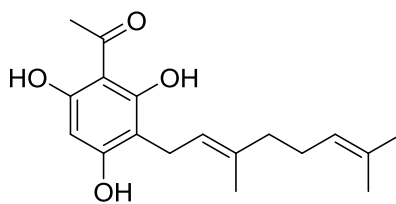
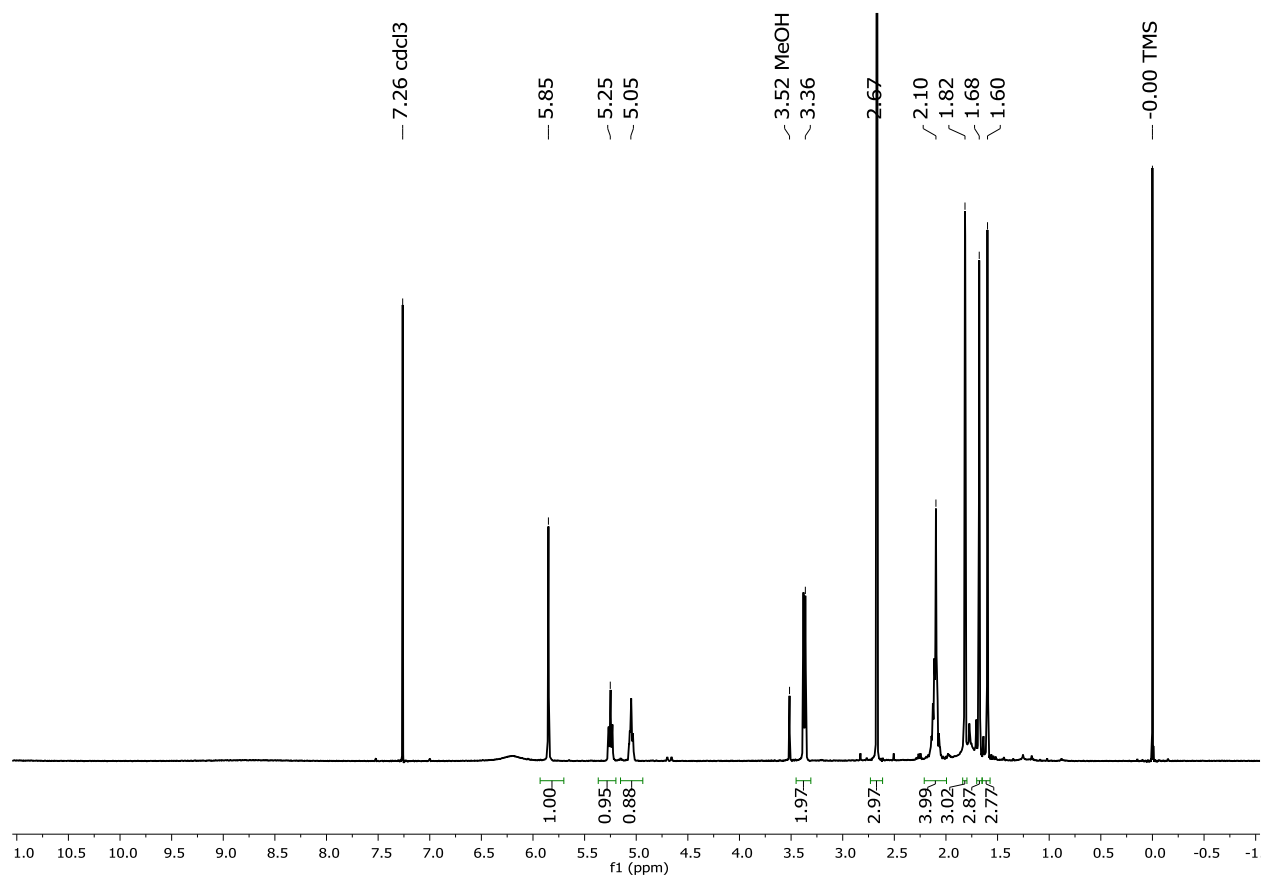
S22. ^1H NMR of **16** (CD_3OD , 400 MHz)



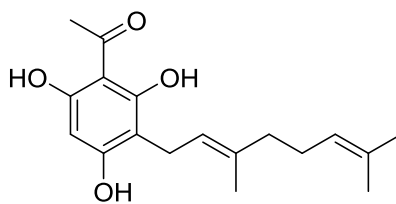
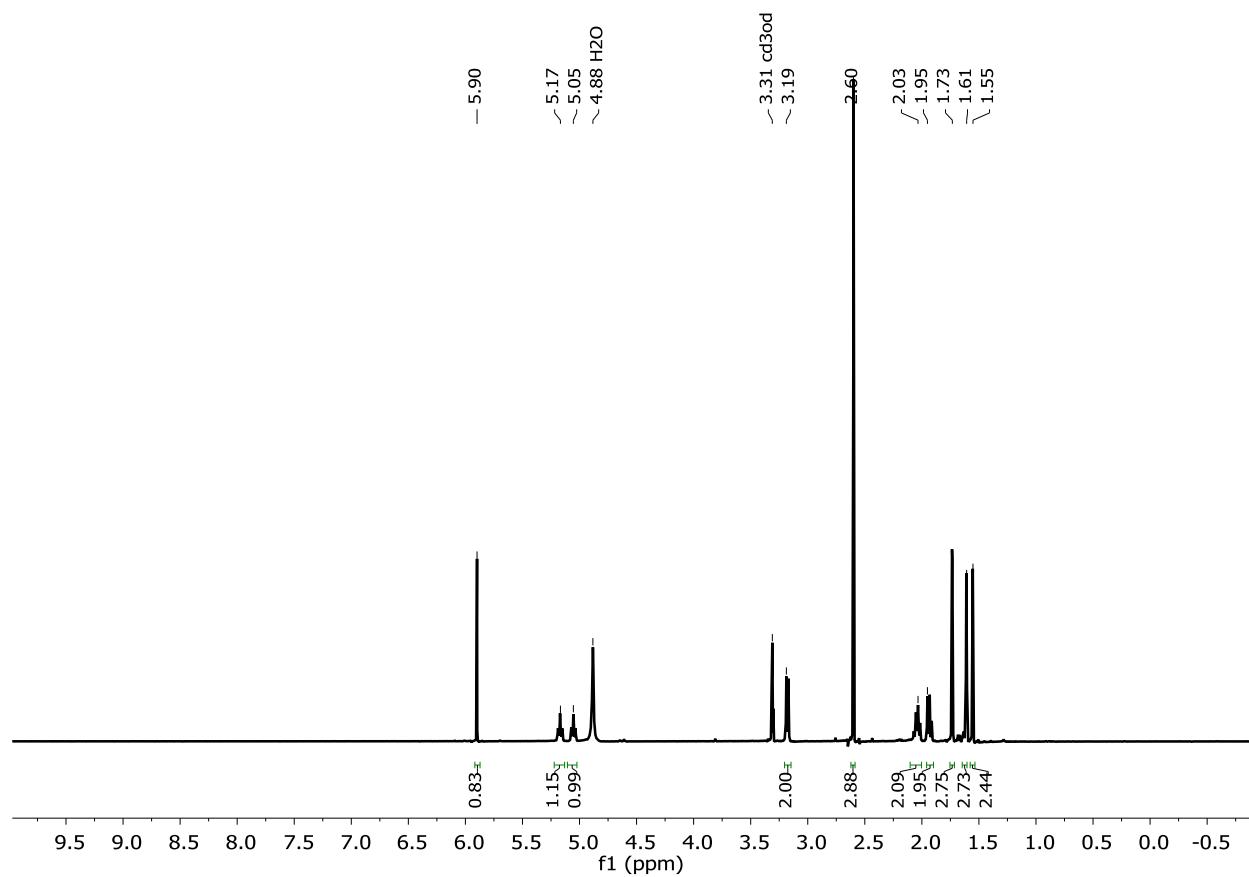
S23. ^{13}C NMR of **16** (CD_3OD , 100 MHz)



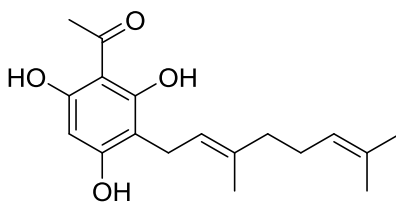
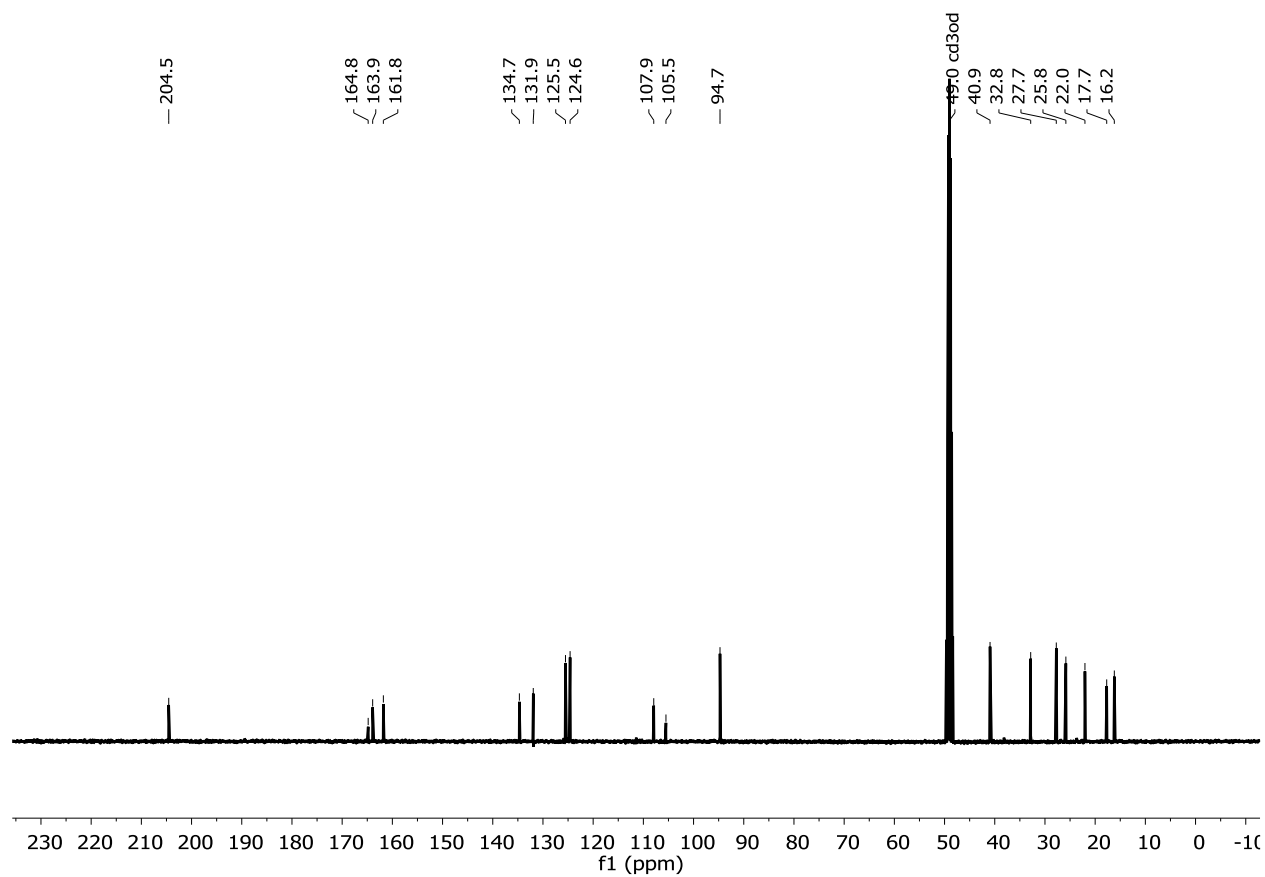
S24. ^1H NMR of **17** (CDCl_3 , 400 MHz)



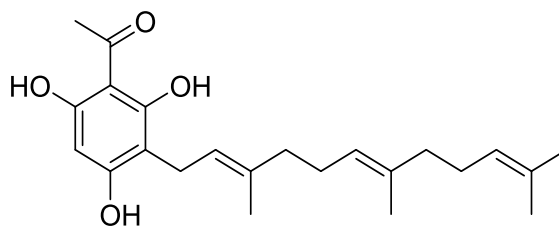
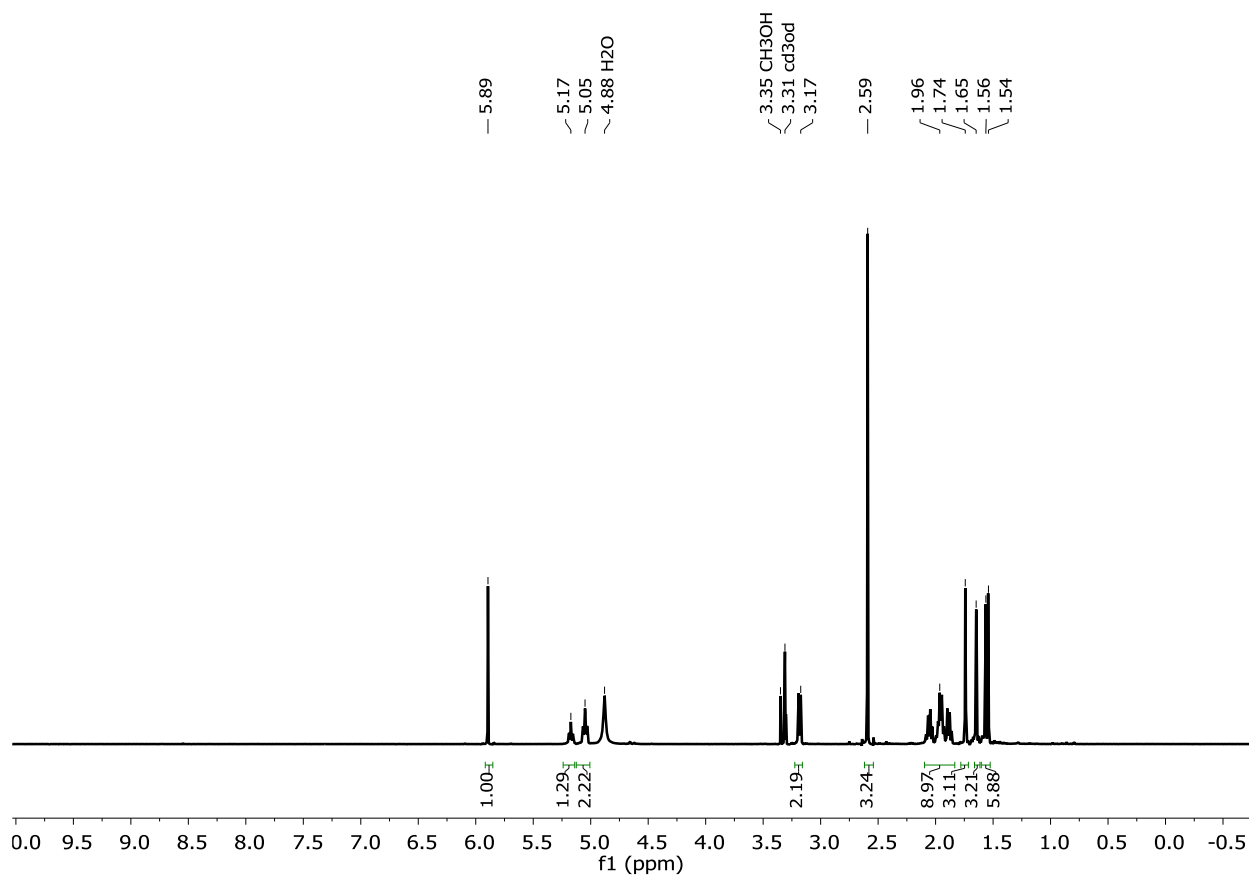
S25. ¹H NMR of **17** (CD₃OD, 400 MHz)



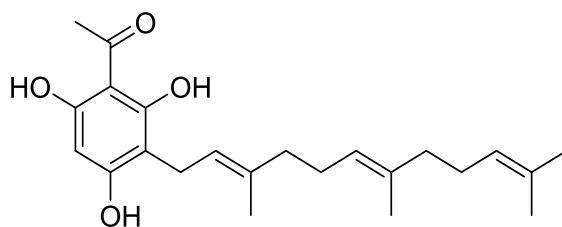
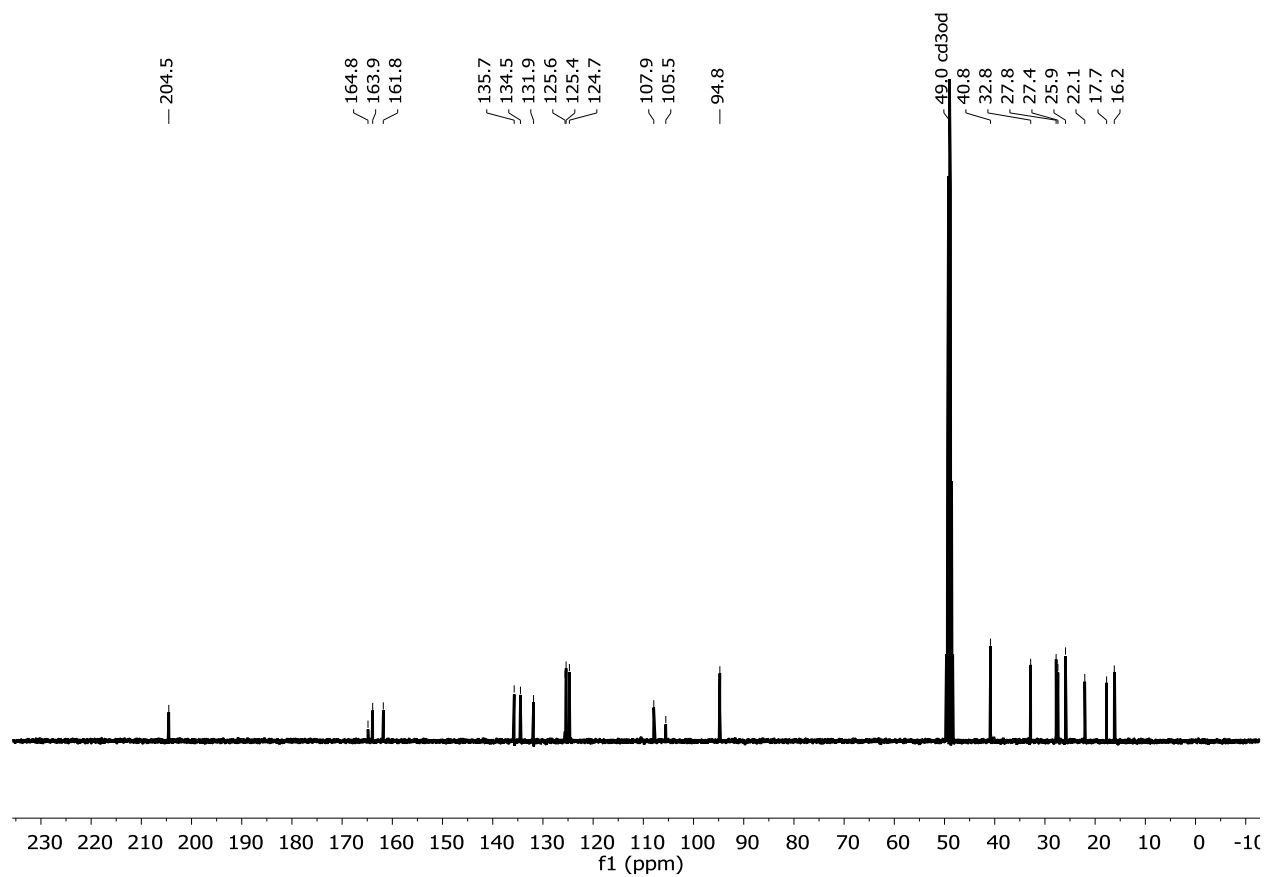
S26. ^{13}C NMR of **17** (CD_3OD , 100 MHz)



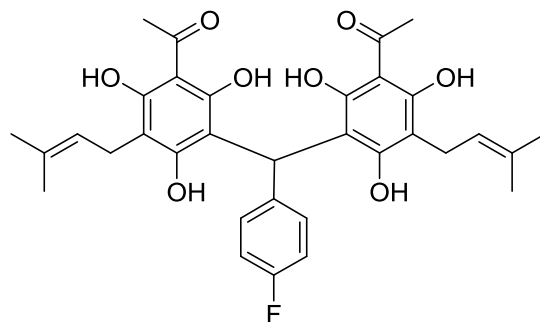
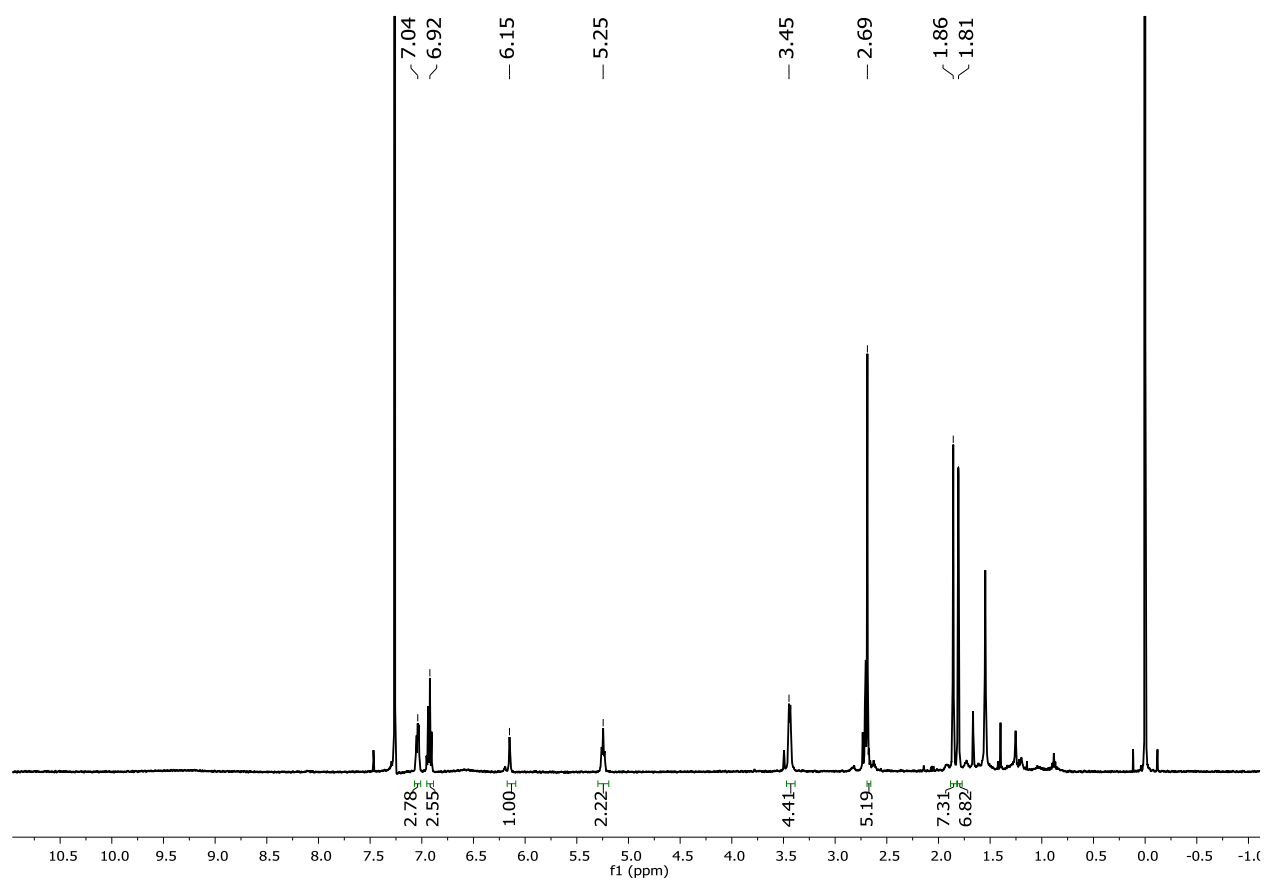
S27. ^1H NMR of **18** (CD_3OD , 400 MHz)



S28. ^{13}C NMR of **18** (CD_3OD , 100 MHz)



S29. ^1H NMR of **19** (CDCl_3 , 500 MHz)



S30. HPLC of **11**

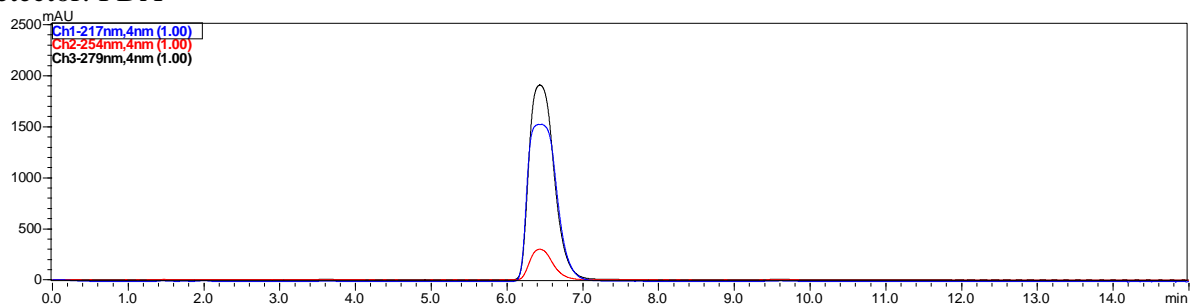
Column: Phenomenex Luna C₁₈, 250 x 4.6 mm

Concentration: 2.5 mg/mL

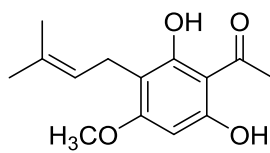
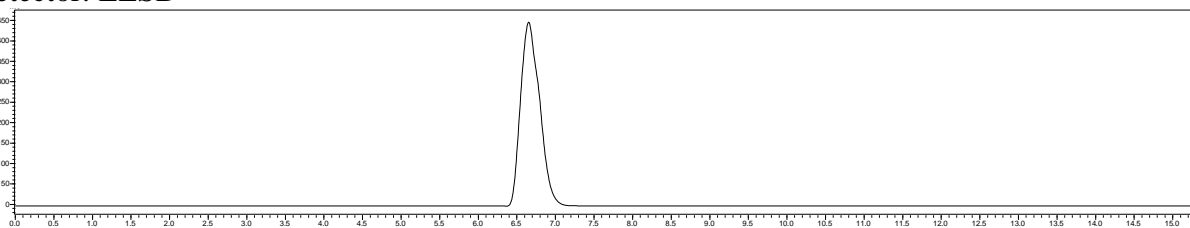
Injection: 10 μ L injection

Mobile Phase: 80% MeOH (aq.)

Detector: PDA



Detector: ELSD



S31. HPLC of 12

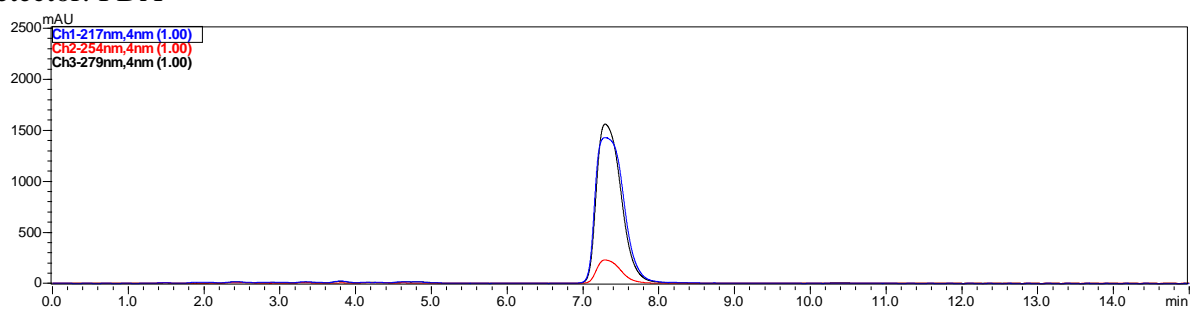
Column: Phenomenex Luna C₁₈, 250 x 4.6 mm

Concentration: 2.5 mg/mL

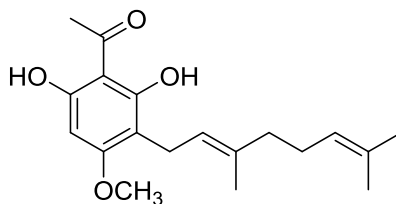
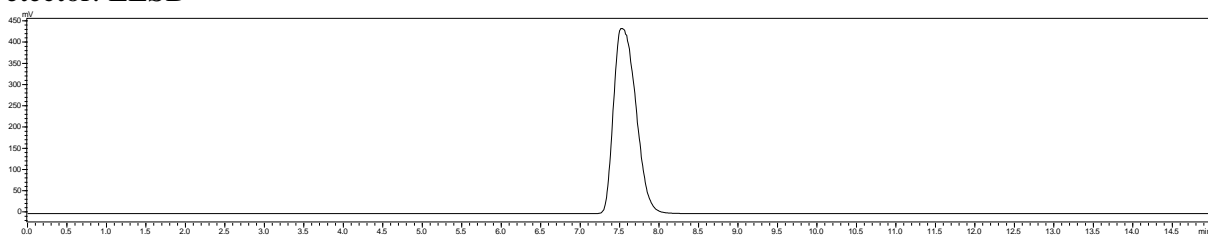
Injection: 10 μ L injection

Mobile Phase: 88% MeOH (aq.)

Detector: PDA



Detector: ELSD



S32. HPLC of 13

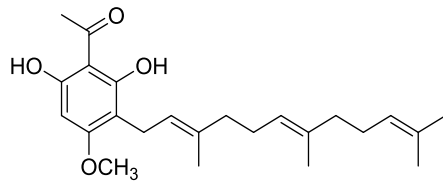
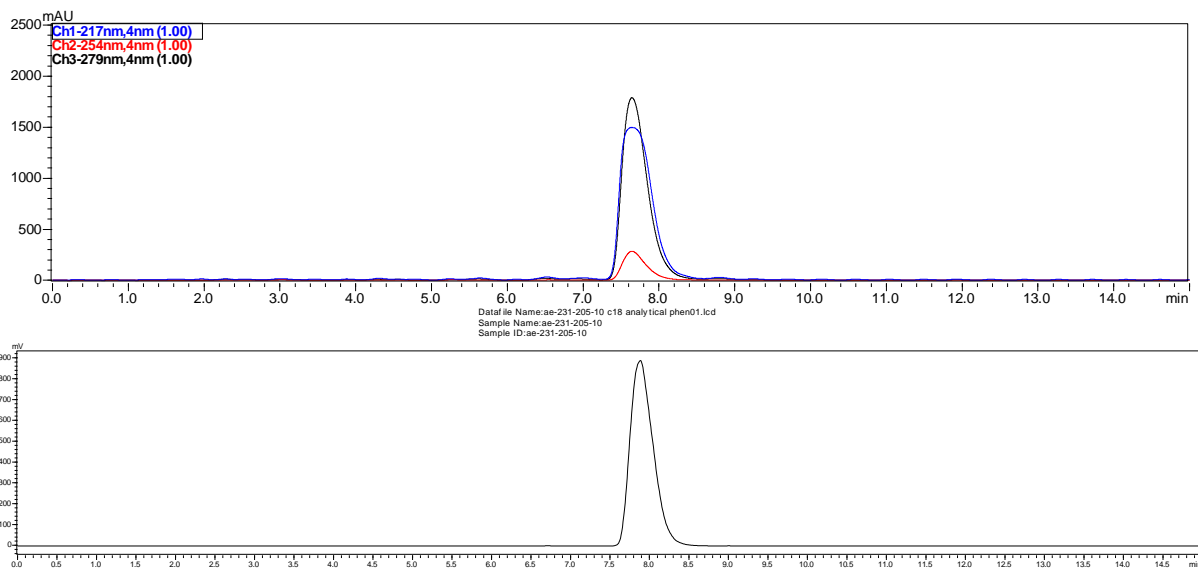
Column: Phenomenex Luna C₁₈, 250 x 4.6 mm

Concentration: 2.5 mg/mL

Injection: 10 μ L injection

Mobile Phase: 93% MeOH (aq.)

Datafile Name: ae-231-205-10 c18 analytical phen01.lcd
Sample Name: ae-231-205-10
Sample ID: ae-231-205-10



S33. HPLC of **16**

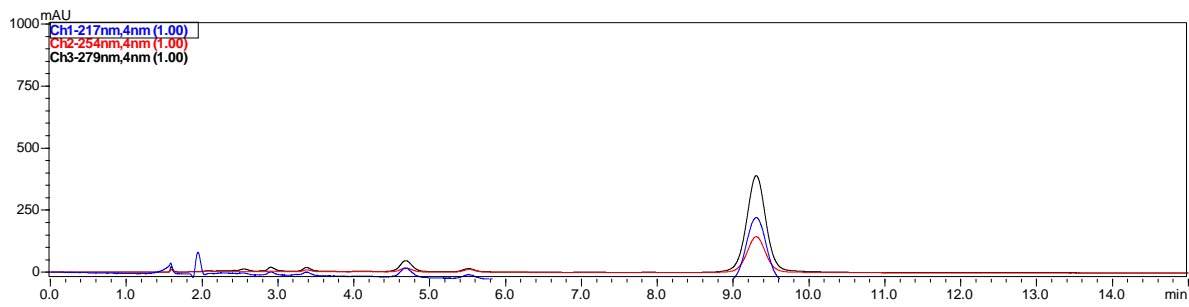
Column: Phenomenex Luna C₁₈, 250 x 4.6 mm

Concentration: 1.25 mg/mL

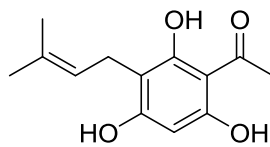
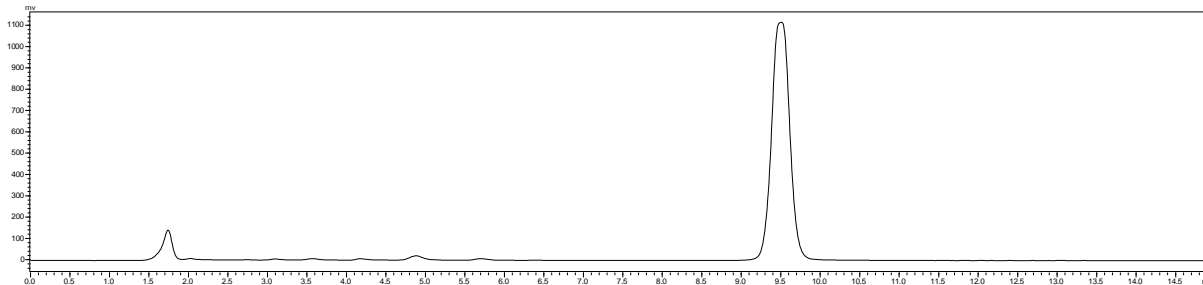
Injection: 10 μ L injection

Mobile Phase: 100% MeOH (aq.)

Detector: PDA



Detector: ELSD



S34. HPLC of 17

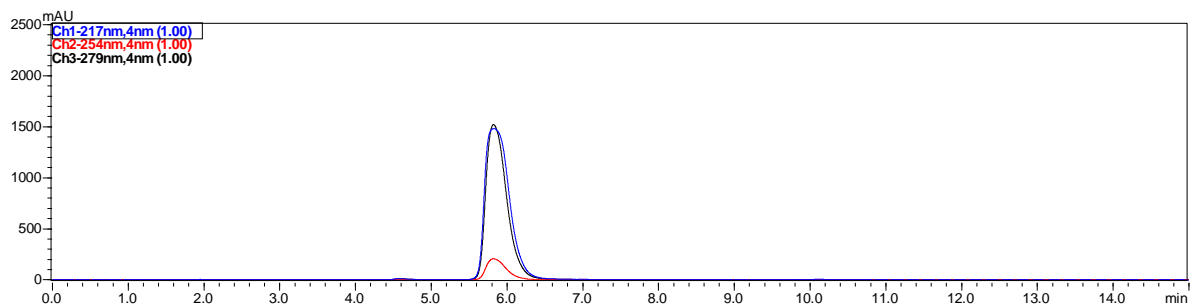
Column: Phenomenex Luna C₁₈, 250 x 4.6 mm

Concentration: 5 mg/mL

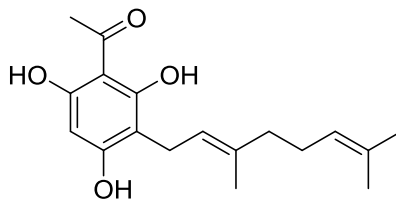
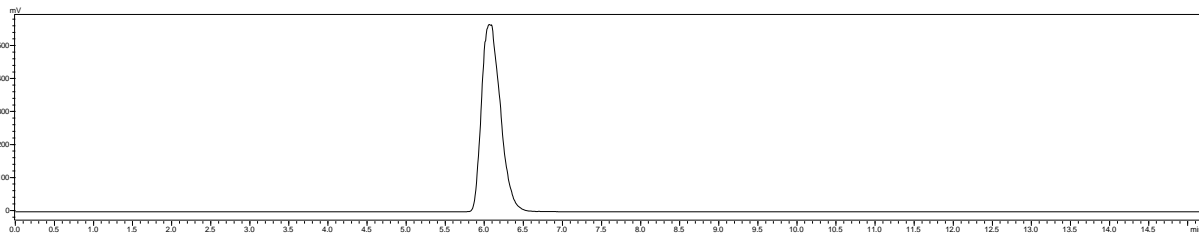
Injection: 5 μ L injection

Mobile Phase: 85% MeOH (aq.)

Detector: PDA



Detector: ELSD



S35. HPLC of **18**

2.5 mg/mL; 10 μ L; 90% MeOH Isocratic 250 x 4.6 Phenomenex Luna C18

Column: Phenomenex Luna C₁₈, 250 x 4.6 mm

Concentration: 2.5 mg/mL

Injection: 10 μ L injection

Mobile Phase: 90% MeOH (aq.)

Datafile Name:ae-231-205-11 c18 analytical phen02.lcd

Sample Name:ae-231-205-11

Sample ID:ae-231-205-11

