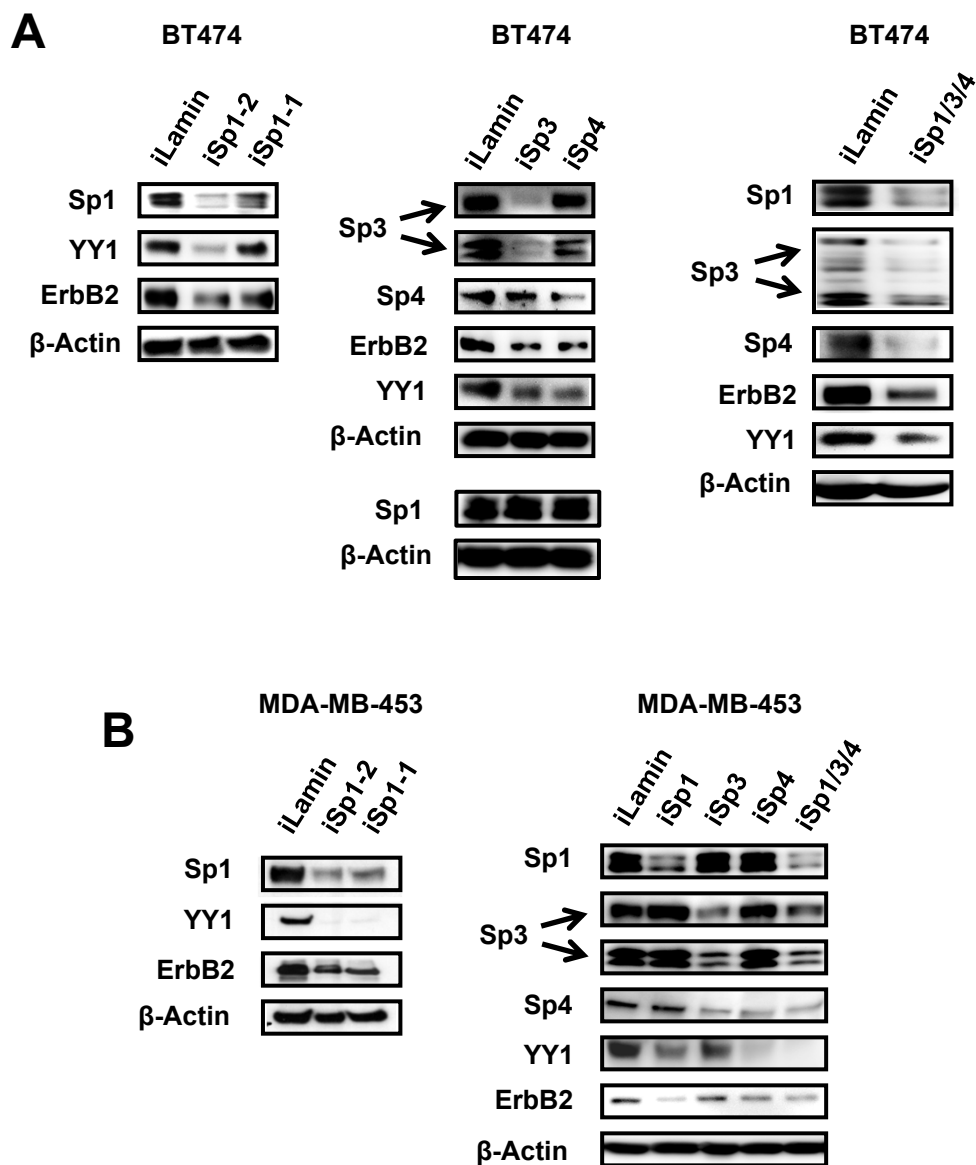


Supplemental Figure 1



Supplemental Figure 1. Role of Sp proteins in regulating level of YY1 protein. Knockdown of Sp1, Sp3, Sp4 or Sp1/Sp3/Sp4 in combination decreases protein levels of YY1 and ErbB2 in BT474 (A) and MDA-MB-453 (B) cells. Cells were transfected with siRNAs for Sp1, Sp3, Sp4 or Sp1/Sp3/Sp4 in combination for 72 hr, and whole cell lysates were analyzed by western blots as described in the Materials and Methods. Two different oligonucleotides were used for Sp1 knockdown (*iSp1-2* and *iSp1-1* (A), and *iSp1-2* was used in (B) (right hand panel). *iLamin* was used as the control oligonucleotide in the knockdown studies.