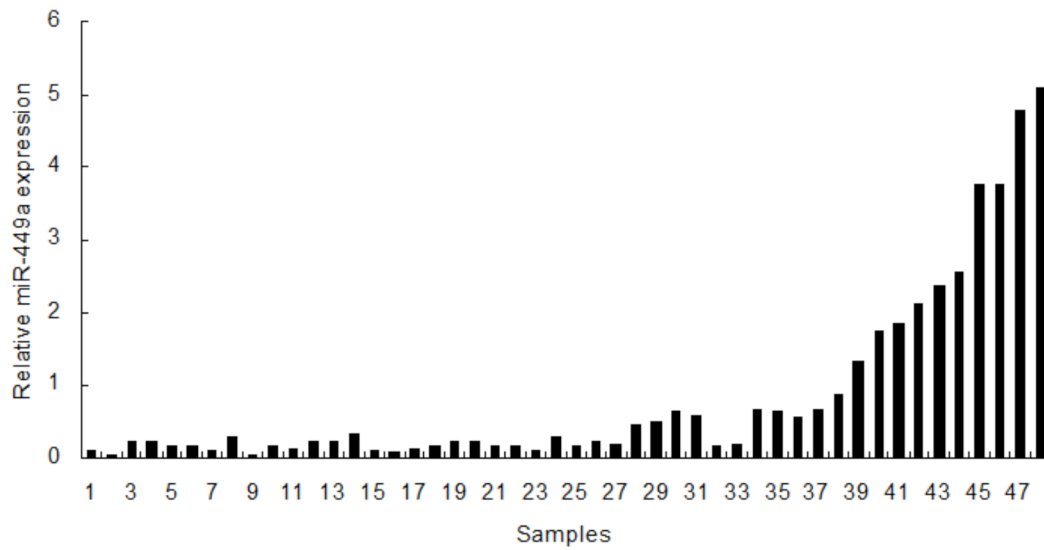
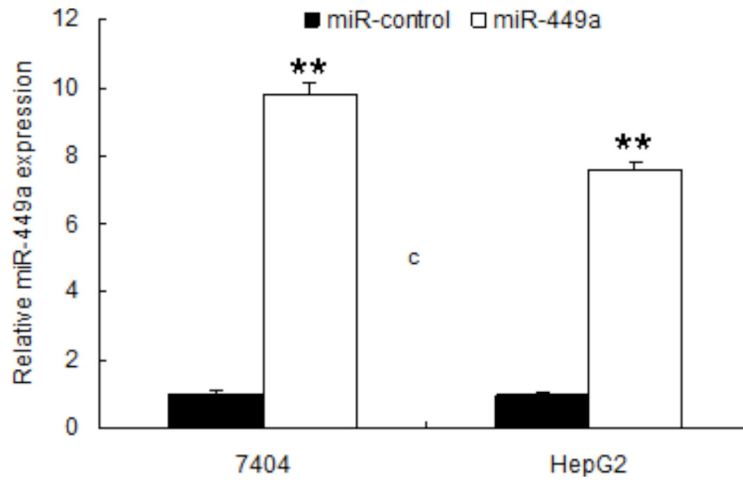


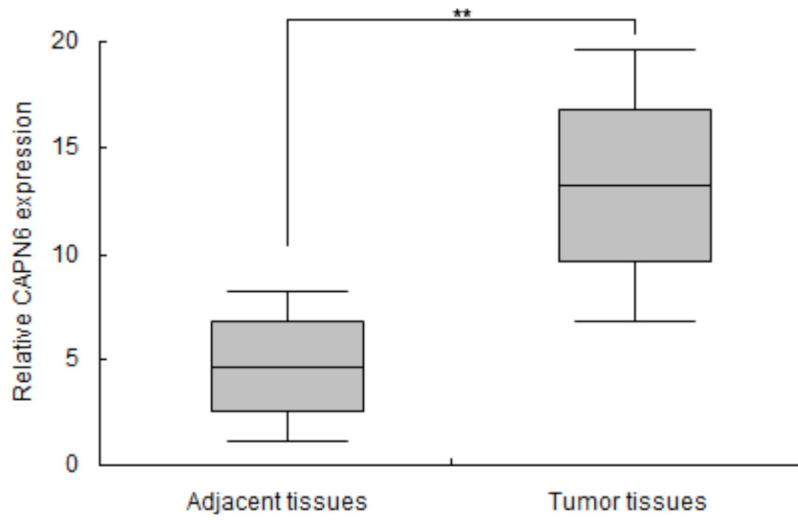
SUPPLEMENTARY FIGURES



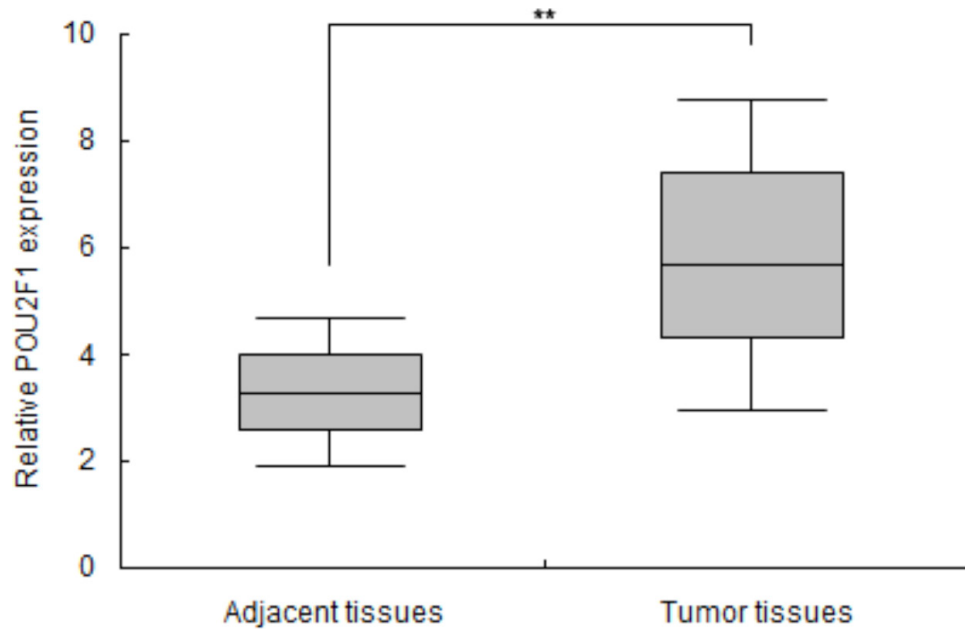
**Supplementary Figure S1: miR-449a expression in 48 liver cancer specimens and normal tissues.** miRNA abundance was assayed by real time RT-PCR and normalized to U6 RNA.



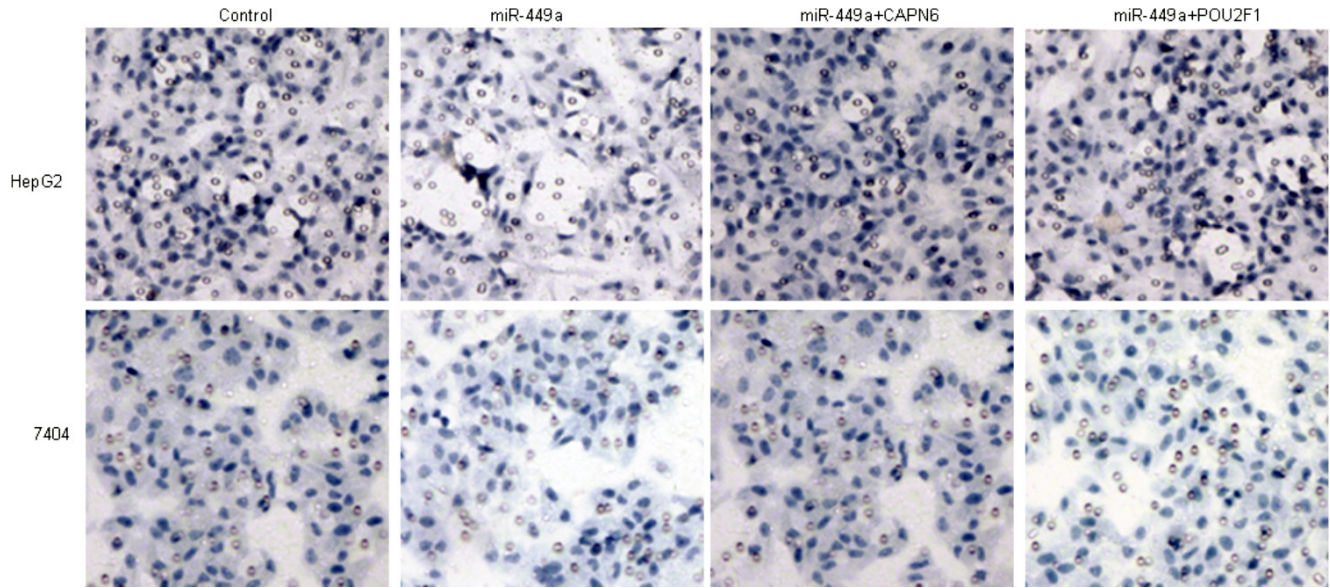
**Supplementary Figure S2: A. miR-449a expression in 7404 and HepG2 cells with miR-449 transfection.** miR-449a expression in liver cancer cells was examined by real time RT-PCR.  $**p < 0.01$



Supplementary Figure S3: CAPN6 mRNA expression in 48 liver cancer specimens and their compared tissues (adjacent tissues). \*\* $p < 0.01$



Supplementary Figure S4: POU2F1 mRNA expression in 48 liver cancer specimens and their compared tissues (adjacent tissues).  $**p < 0.01$



**Supplementary Figure S5: miR-449a shows no inhibition of invasion via CAPN6 and POU2F1 in liver cancer cells.** Cell invasion was assayed by transwell chamber. miR-449a could inhibit HepG2 cell invasion, but not through CAPN6 or POU2F1. There was no inhibition in 7404 cells.