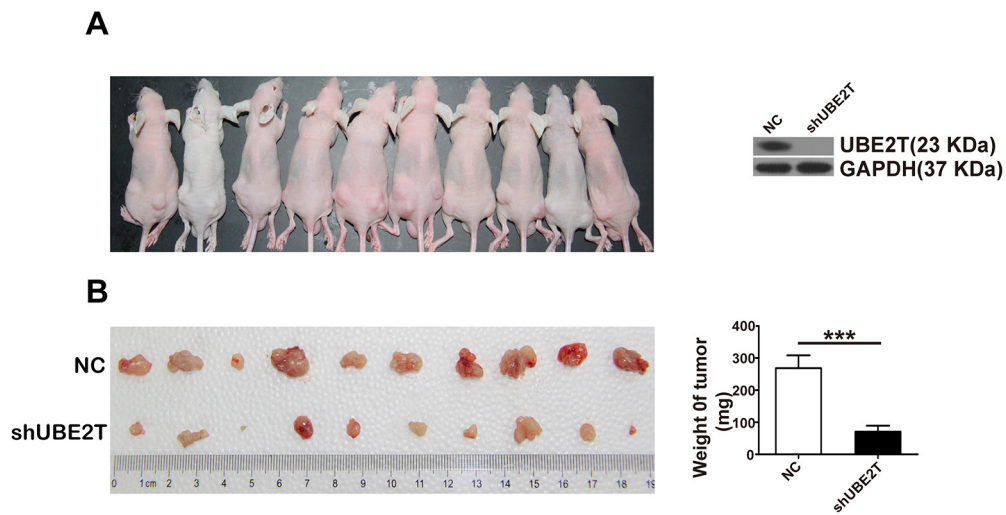
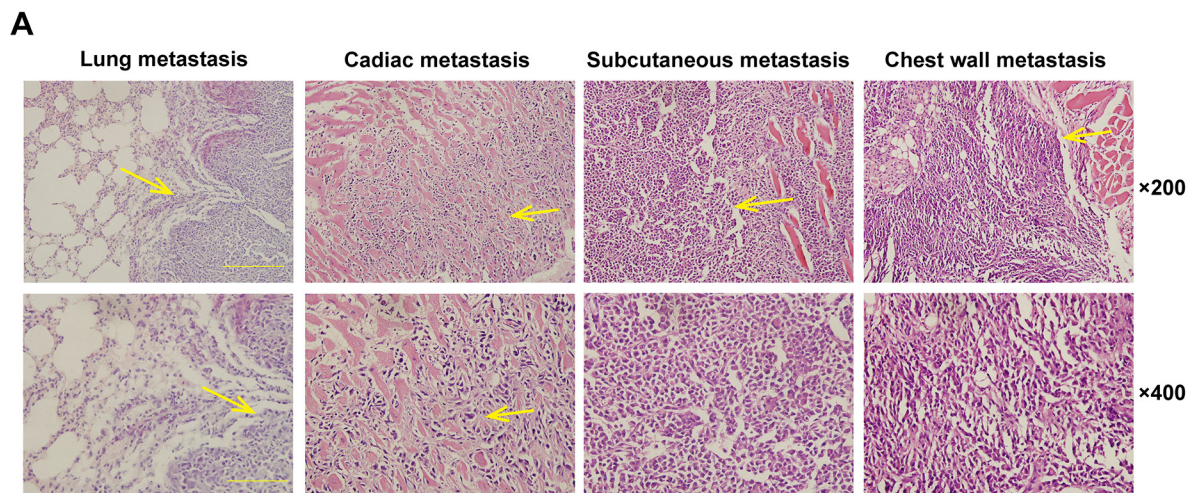


SUPPLEMENTARY FIGURES AND TABLES



Supplementary Figure S1: Silencing UBE2T with shRNA inhibited the growth of CNE2 subcutaneous xenografts. A. Images of nude mice at 10 days after subcutaneously injecting CNE2 cells as shown (left flank: normal control [NC], right flank: shUBE2T). Western blot images show the silence efficiency. B. The images of indicated CNE2 subcutaneous xenografts (left). The graph shows mean \pm SEM values of xenograft weight (n=10, Student's t-test, *** $P < 0.001$).



B

Groups	NC	UBE2T
Mice	7	7
Metastatic organs	7	21

Supplementary Figure S2: A. Representative images of metastasis under 20/40X objective fields. Scale indicates 200 μ m in 20X objective and 100 μ m in 40X objective. Yellow arrows indicate lesions. **B.** The number of total metastatic organs verified by HE staining in each group.

	Low UBE2T expression	High UBE2T expression
Low p-GSK3 β expression	5	2
High p-GSK3 β expression	1	12

Supplementary Figure S3: The correlation analysis of UBE2T and p-GSK3 β in 20 additional NPC samples. (chi-square test, $P=0.007$).

Supplementary Table S1: 1992 Fuzhou staging system for nasopharyngeal carcinoma

T1:	Tumor confined to the nasopharynx
T2:	Involvement of nasal cavity, oropharynx, soft palatine, anterior cervical vertebrae soft tissue, and parapharyngeal space extension before SO line*
T3:	Extension over SO line, involvement of anterior or posterior cranial nerves alone, skull base, pterygopalatine zone, and pterygopalatine fossa
T4:	Involvement of both anterior and posterior cranial nerves, paranasal sinus, cavernous sinus, orbit, infratemporal fossa, and direct invasion of first or second cervical vertebra
N0:	No enlarged lymph node
N1:	Diameter of upper neck lymph node <4 cm, movable
N2:	Lower neck lymph node or the diameter between 4 and 7 cm
N3:	Supraclavicular lymph node or diameter >7 cm or fixed of skin infiltration
M0:	Absence of distant metastasis
M1:	Presence of distant metastasis
Stage I	T1N0M0
Stage II	T2N0-1M0, T1-2N1M0
Stage III	T3N0-2M0, T1-3N2M0
Stage IVa	T4N0-3M0, T1-4N3M0
Stage IVb	Any T, any N, M1

* Line connected from the styloid process to the midpoint on posterior edge of the great occipital foramen; border between upper and lower neck is the lower margin of the cricoid cartilage.

Supplementary Table S2: Clinicopathological parameters of patient samples and UBE2T expression levels in NPC

	N(%)
Gender	
Male	109 (73.2)
Female	40 (26.8)
Age	
≤45	67(45.0)
>45	82(55.0)
T classification	
T1-T2	101 (67.8)
T3-T4	48 (32.2)
N classification	
N0	94 (63.1)
N1-N3	55 (36.9)
M classification	
M0	131 (88.9)
M1	18 (12.1)
Skull base invasion	
No	125 (83.9)
Yes	24 (16.1)
Recurrence	
No	136 (91.3)
Yes	13 (8.7)
Expression of UBE2T	
High expression	56 (37.6)
Low expression	93 (62.4)