

Detection of hMAbs by goat anti-human Ig (IgA,IgG,IgM) secondary antibody conjugated reagent

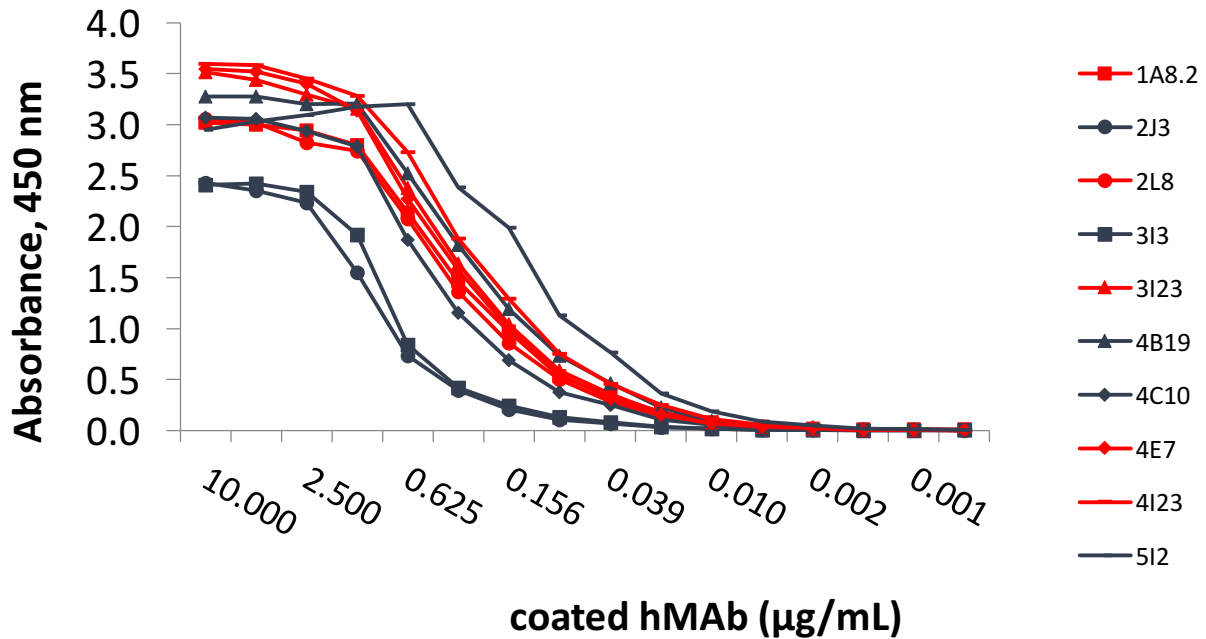


Figure S1. Detection of IgA or IgG antibodies with a common conjugated antibody. ELISA plates were coated with one of the ten human monoclonal antibodies in varying dilutions and then detected with the polyclonal goat anti-human secondary antibody suspension. IgA antibodies are shown in red, IgG antibodies in black.