

Fig. A Representative pictures of H&E staining. Cardiomyocyte hypertrophy in mice deficiency of receptor for advanced glycation end products (RAGE) and their wild type (WT) littermates in response to pressure overload for 1 week. KO: RAGE knockout; TAC: transverse aortic constriction.

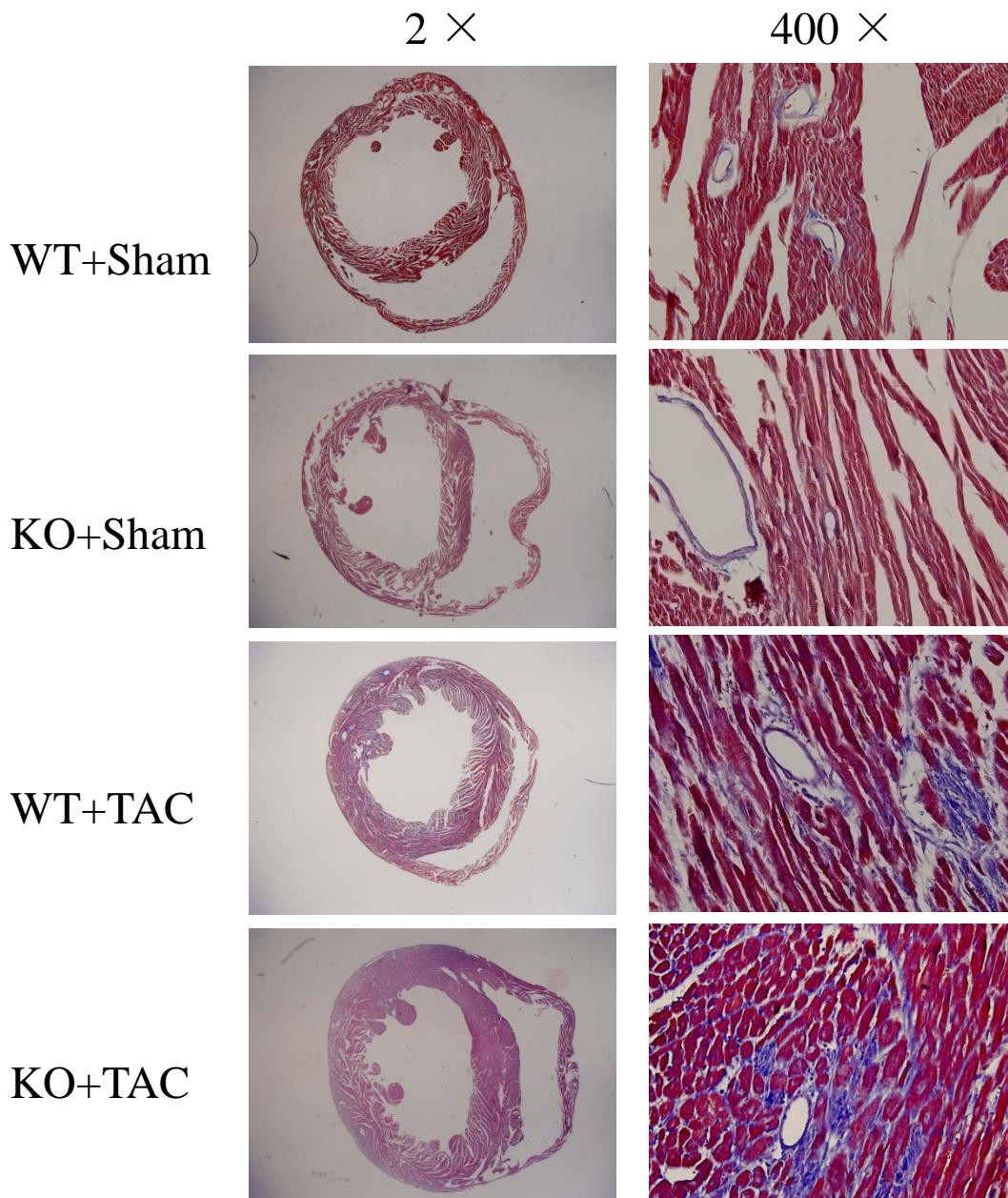


Fig B Representative pictures of Azan-Mason staining. Myocardial fibrosis in mice deficiency of receptor for advanced glycation end products (RAGE) and their wild type (WT) littermates in response to pressure overload for 1 week. KO: RAGE knockout; TAC: transverse aortic constriction.