

a)

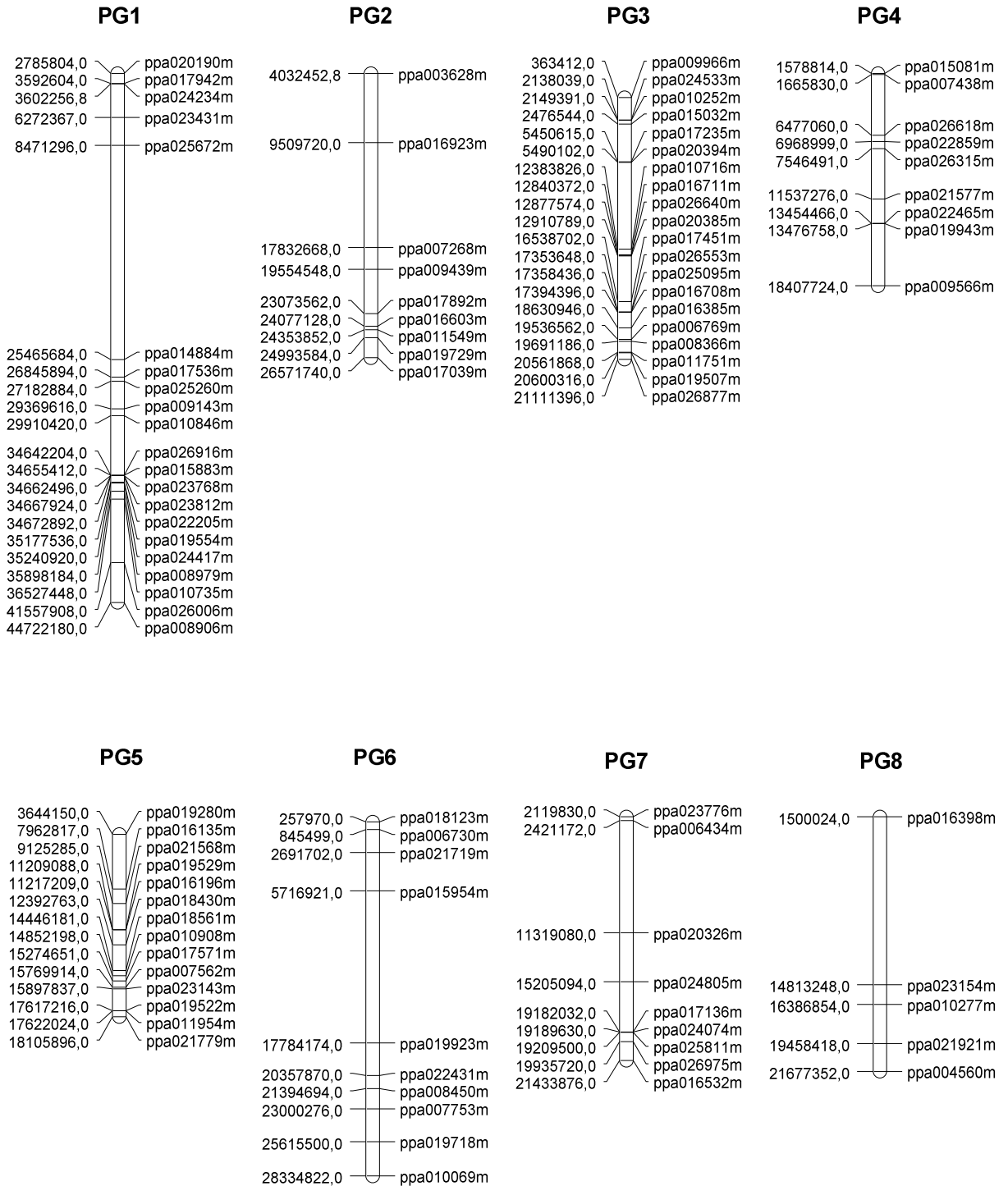


Fig. S1. Linkage groups and chromosomal positioning of the gene models found peach (a), strawberry (b) and apple (c).

b)

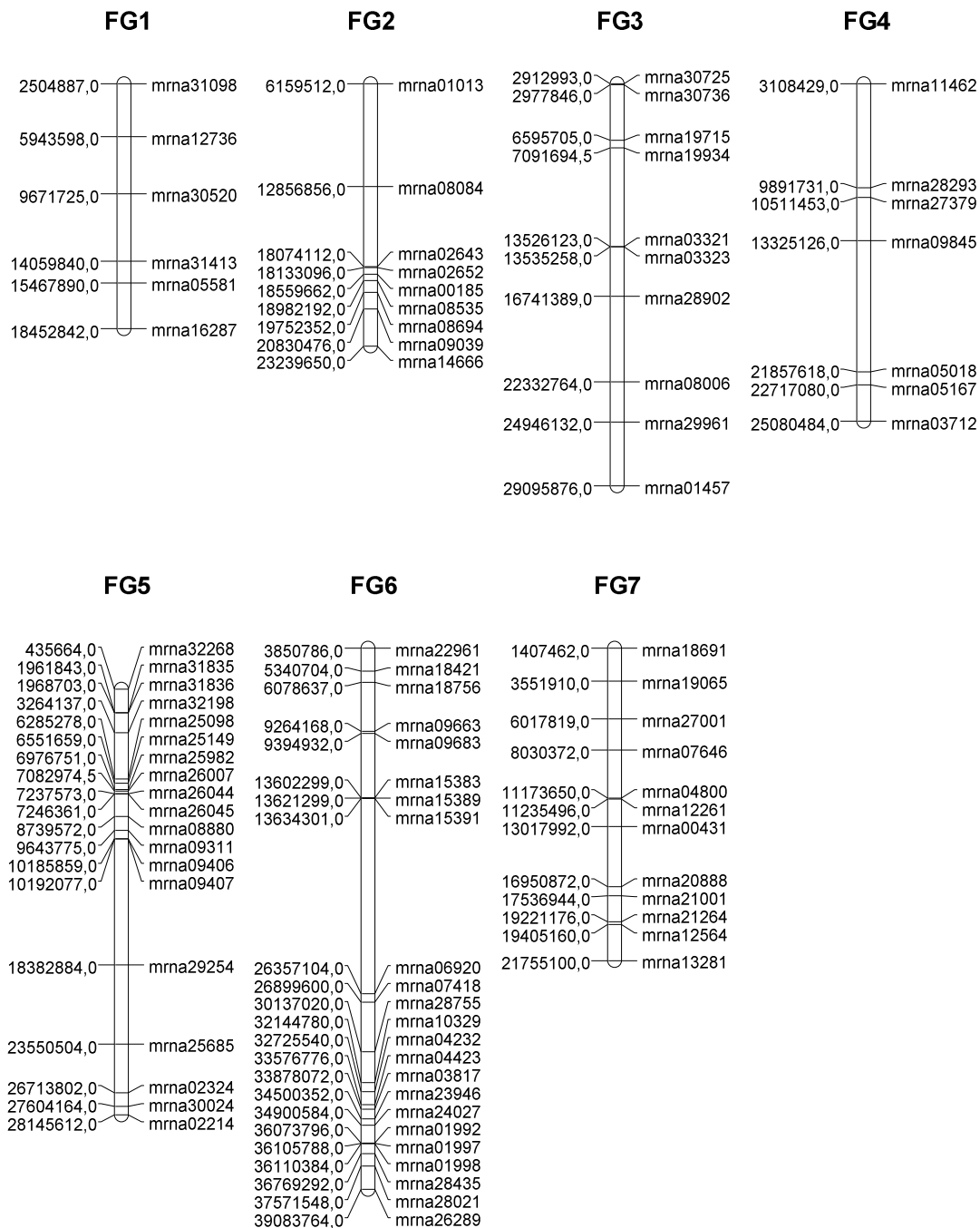


Fig. S1. Linkage groups and chromosomal positioning of the gene models found peach (a), strawberry (b) and apple (c).

c)

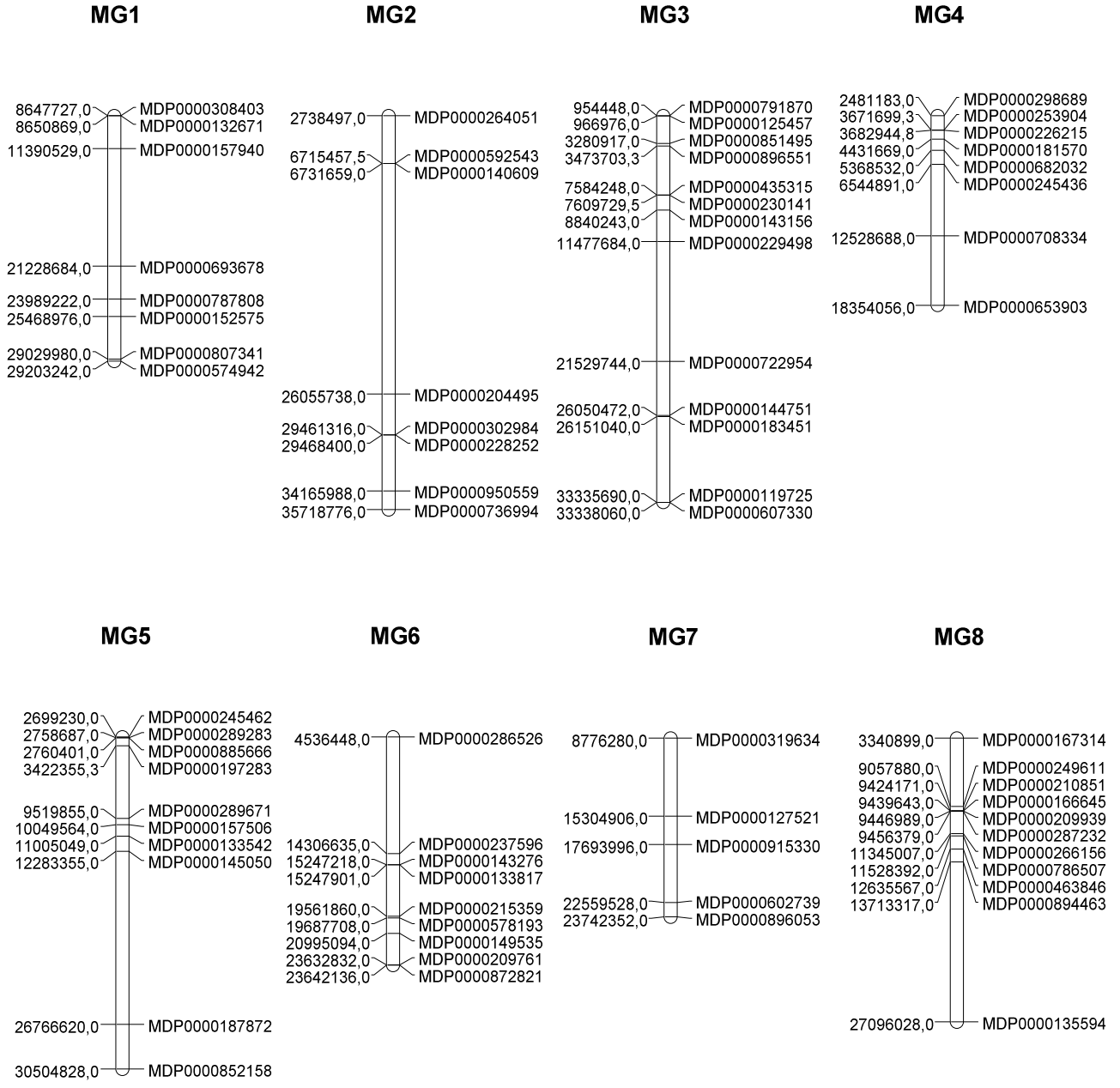


Fig. S1. Linkage groups and chromosomal positioning of the gene models found peach (a), strawberry (b) and apple (c).

c)

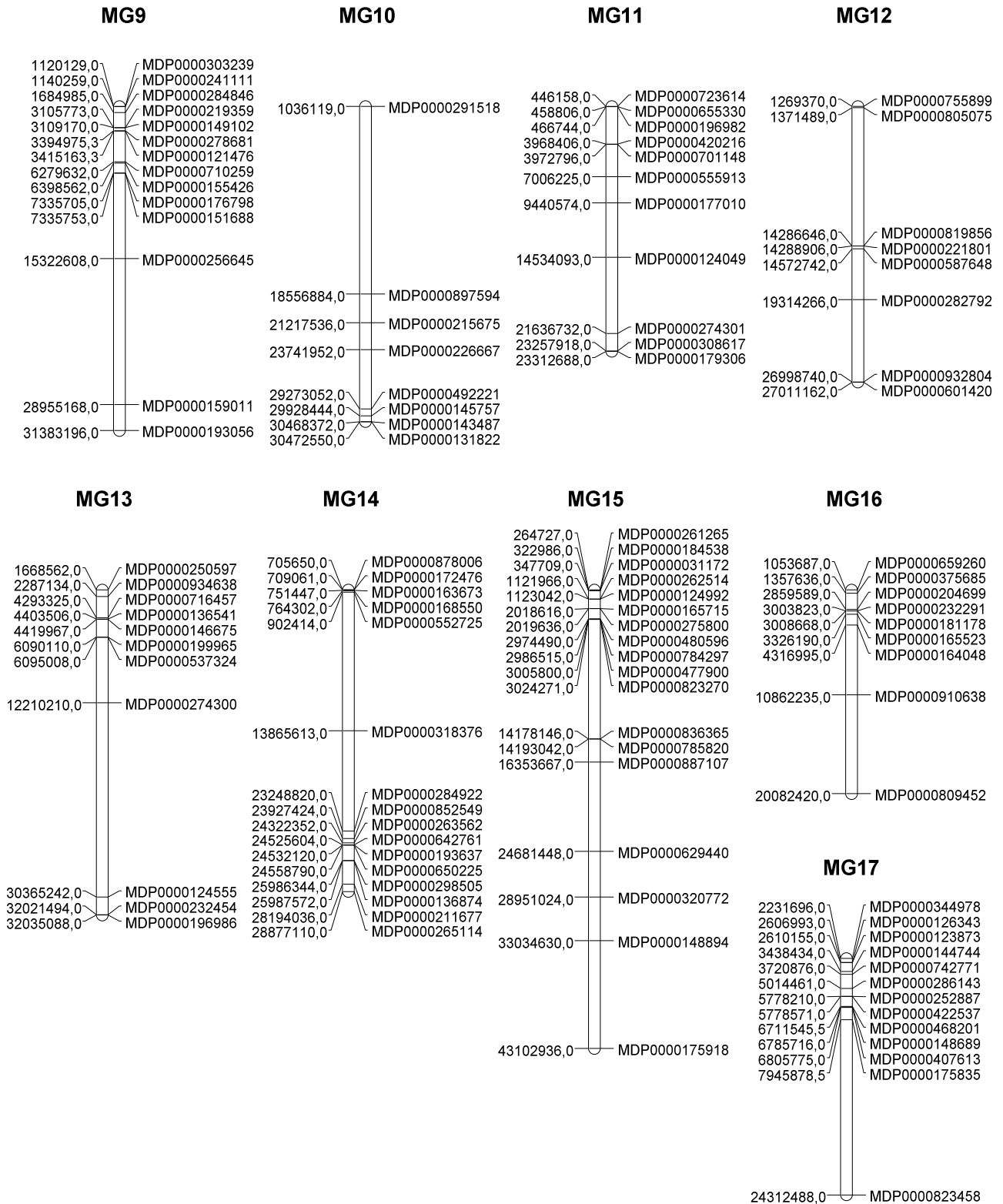


Fig. S1. Linkage groups and chromosomal positioning of the gene models found peach (a), strawberry (b) and apple (c).