

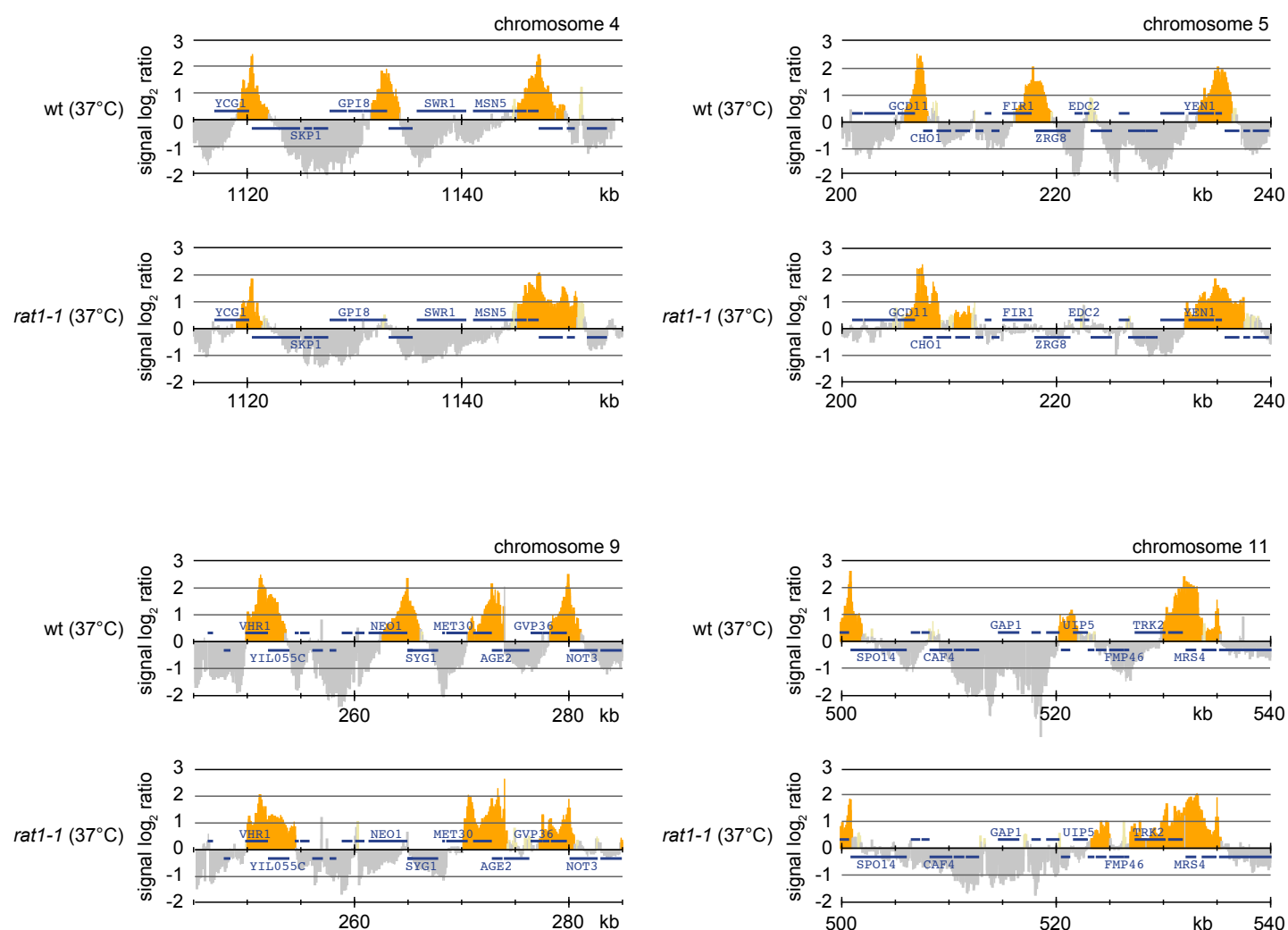
# Evidence for cohesin sliding along budding yeast chromosomes

Maria Ocampo-Hafalla, Sofía Muñoz, Catarina P. Samora and Frank Uhlmann

## Supplementary Material

	Page
Supplementary figure S1	2
Supplementary figure legend	3
Supplementary table S1	4
Supplementary table S2	5
Supplementary table S3	5

Figure S1



### Supplementary figure legend

**Figure S1.** Additional examples for cohesin pattern changes following *rat1-1* inactivation. As figure 6*b*, but cohesin association along the indicated regions from chromosomes 4, 5, 9 or 11 is compared between wild type and *rat1-1* cells at 37 °C.

**Supplementary table S1.** Yeast strains used in this study.

Y2269:	<i>MATa</i> <i>SCC1-Pk<sub>9</sub>::TRP1</i>
Y2270:	<i>MATa</i> <i>scc2-4, SCC1-Pk<sub>9</sub>::TRP1</i>
Y2342:	<i>MATa</i> <i>scc4Δ::HIS3, LEU2::scc4-4, SCC1-Pk<sub>9</sub>::TRP1</i>
Y2329:	<i>MATa</i> <i>SCC1-Pk<sub>3</sub>::HIS3</i>
Y2330:	<i>MATa</i> <i>smc1R58A::LEU2, smc3R58A::TRP1, SCC1-Pk<sub>3</sub>::HIS3</i>
TR96:	<i>MATa</i> <i>SCC1-myc<sub>9</sub>::TRP1</i>
Y3398:	<i>MATa</i> <i>wpl1Δ::kanR, SCC1-myc<sub>9</sub>::TRP1, LEU2::tetR-GFP,</i> <i>URA3::TetOs</i>
Y2279:	<i>MATa</i> <i>scc2-4, SCC1-Pk<sub>9</sub>::TRP1, LEU2::GAL1 promoter-SCC1-HA<sub>3</sub></i>
Y4843	<i>MATa</i> <i>SCC1-HA<sub>3</sub>::LEU2</i>
Y875:	<i>MATa</i> <i>GAL2 promoter-UTP20, SCC1-Pk<sub>9</sub>::TRP1</i>
Y2271:	<i>MATa</i> <i>SCC1-Pk<sub>9</sub>::TRP1</i>
Y2272:	<i>MATa</i> <i>rat1-1 SCC1-Pk<sub>9</sub>::TRP1</i>
Y3545:	<i>MATα</i> <i>cyc1-5000 cyc7-67 cyh2 SCC1-Pk<sub>3</sub>::LEU2</i>
Y3546:	<i>MATα</i> <i>sua7-1 cyc1-5000 cyc7-67 cyh2 SCC1-Pk<sub>3</sub>::LEU2</i>
Y3869:	<i>MATa</i> <i>T7 promoter-GAL2, SCC1-PK<sub>3</sub>::HIS3</i>
Y3904:	<i>MATa</i> <i>T7 promoter-GAL2, SCC1-PK<sub>3</sub>::HIS3, ADH1 promoter-NLS-T7</i> <i>polymerase::TRP1</i>
Y4883:	<i>MATa</i> <i>T7 promoter-GAL2, SCC1-PK<sub>3</sub>::HIS3, ADH1 promoter-NLS-T7</i> <i>polymerase::TRP1, ADH1 promoter-NLS-LacI::LEU2</i>

**Supplementary table S2.** qPCR primer pairs used for quantitative analysis of Sec1 chromatin immunoprecipitates at the *GAL2* locus.

Name	Sequence
<i>GAL2F</i> -2 (P1)	TTGGCCTGGATGATTCCT
<i>GAL2R</i> -2 (P1)	AGCGCCCAAAGTAAACA
3'RegionF-2 (P2)	CTTGCTTACTTATCCACTCCCA
3'RegionR-2 (P2)	TGTACAGGGTTAATCTATAGCCACA

**Supplementary table S3.** qPCR primer pairs used for gene expression analysis.

Name	Sequence
<i>GAL2F</i> (SM88)	CGAACTCAGTTCAATGGAGAGT
<i>GAL2R</i> (SM89)	TACCGGCCATGATCAGATCT
ActinF (MRT1)	CTCCACCACTGCTGAAAGAGAA
ActinR (MRT2)	CGAAGTCCAAGGCGACGTAA