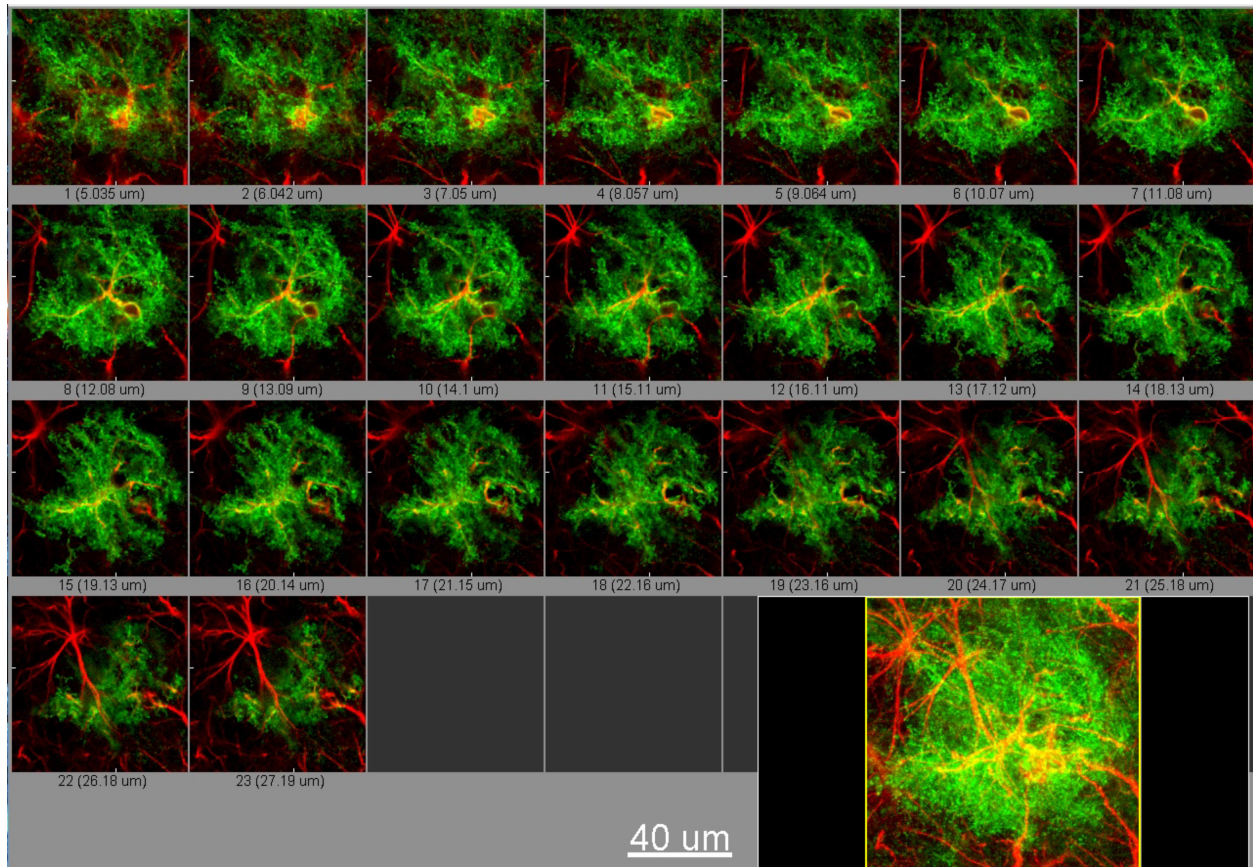
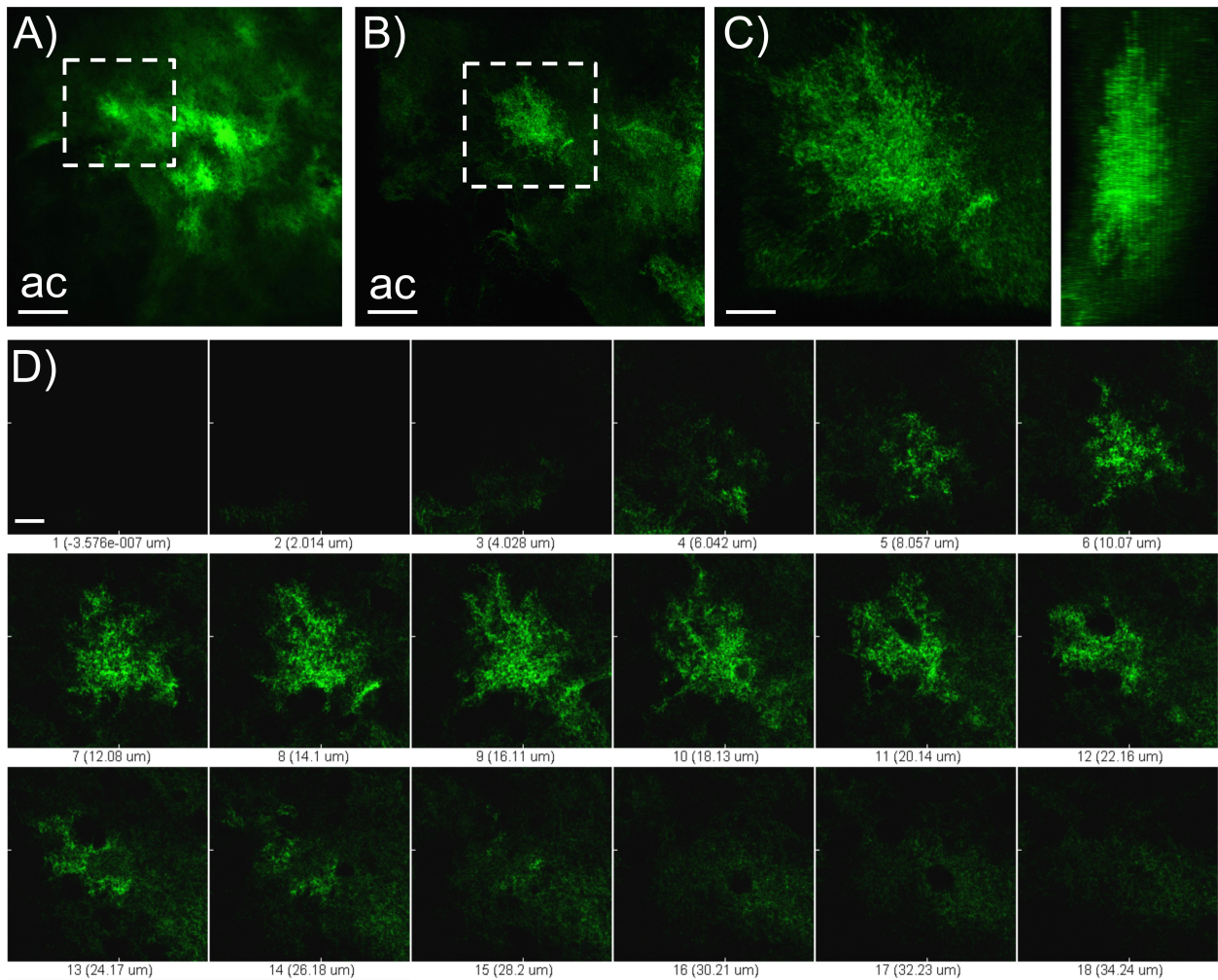


## Cocaine Self-Administration and Extinction Leads to Reduced Glial Fibrillary Acidic Protein Expression and Morphometric Features of Astrocytes in the Nucleus Accumbens Core

### *Supplemental Information*



**Figure S1. Glial Lck-GFP and GFAP high magnification Z-series montage.** Shown here are the individual optical sections that comprise the image shown in Figure 2B; these data show the GFAP filament protein in red closely following the contours of the Lck-GFP signal in green throughout the Z-plane (thickness) of the astroglial cell. These images show co-registry of the Lck-GFP and GFAP signals in individual optical planes, demonstrating the astroglial specific expression of the Lck-GFP.



**Figure S2. Microscopic Isolation of a single GFP-positive cell. (A)** 20X image of Lck-GFP in NAcore astrocytes, the anterior commissure is labeled “ac”, the scale bar depicts 100 μm, and the white dashed box represents the area of the brain tissue selected for higher magnification imaging. **(B)** 63X image of the area shown in the white in panel A, note at higher magnification isolation of individual astroglial cells is easier to achieve. The white dashed box in this panel represents the area of the data set selected for 3D cropping. The anterior commissure is labeled “ac” here as well and the scale bar represents 40 μm. **(C)** Shown here is the individual astroglial cell cropped from the 63X image shown in panel B. To the right of this image is an orthogonal view of the astrocyte demonstrating that it was imaged in its entirety. Here the scale bar represents 15 μm. **(D)** The series of images that constitute the data set for the individual cell shown in panel C is shown here. In this panel the scale bar is also 15 μm.