

SUPPLEMENTARY DATA

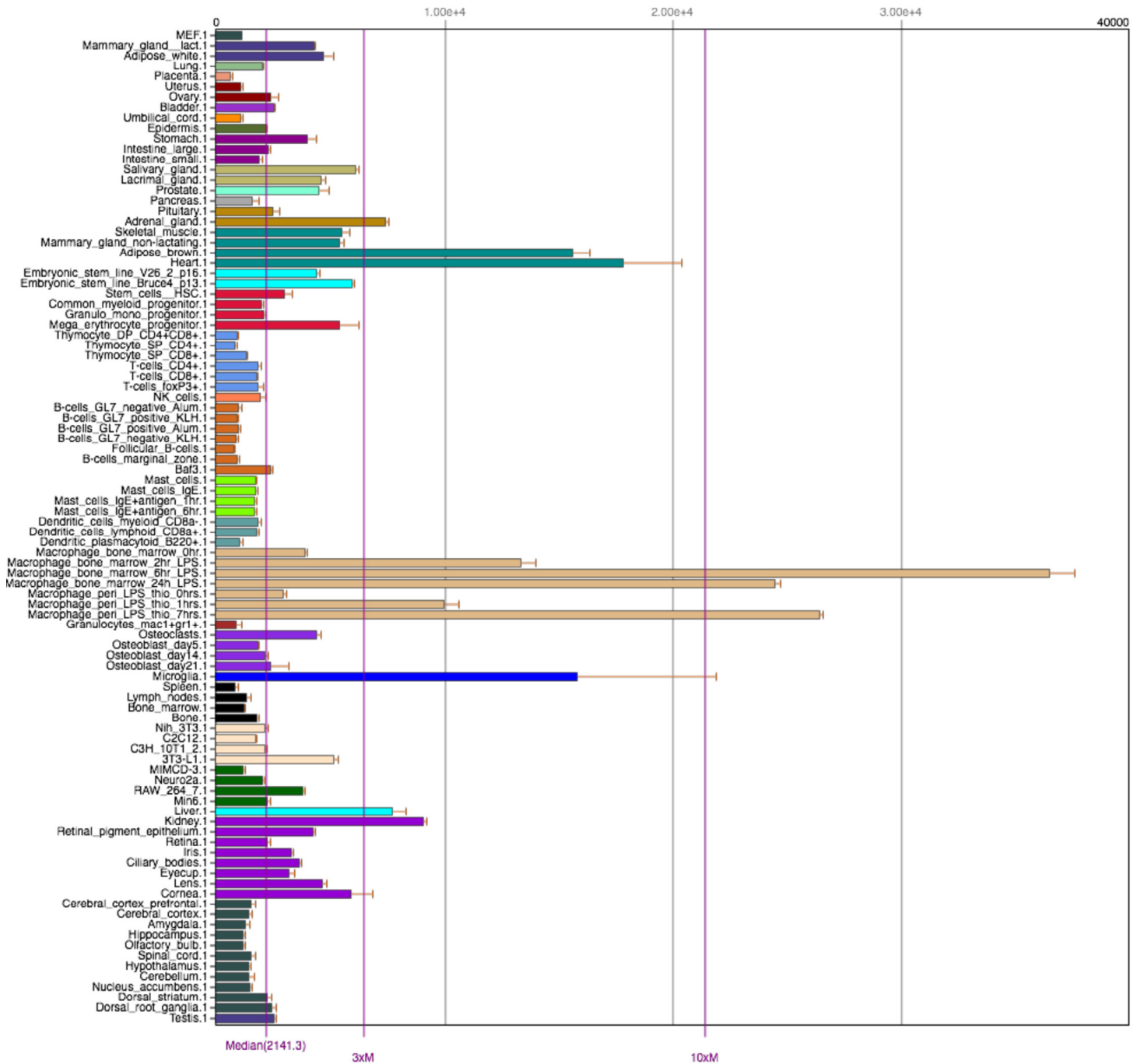


Figure S1. Tissue-specific mRNA expression of SOD2. Shown is mRNA expression of SOD2 in different mouse tissues. Data are generated from BioGPS (www.biogps.org).

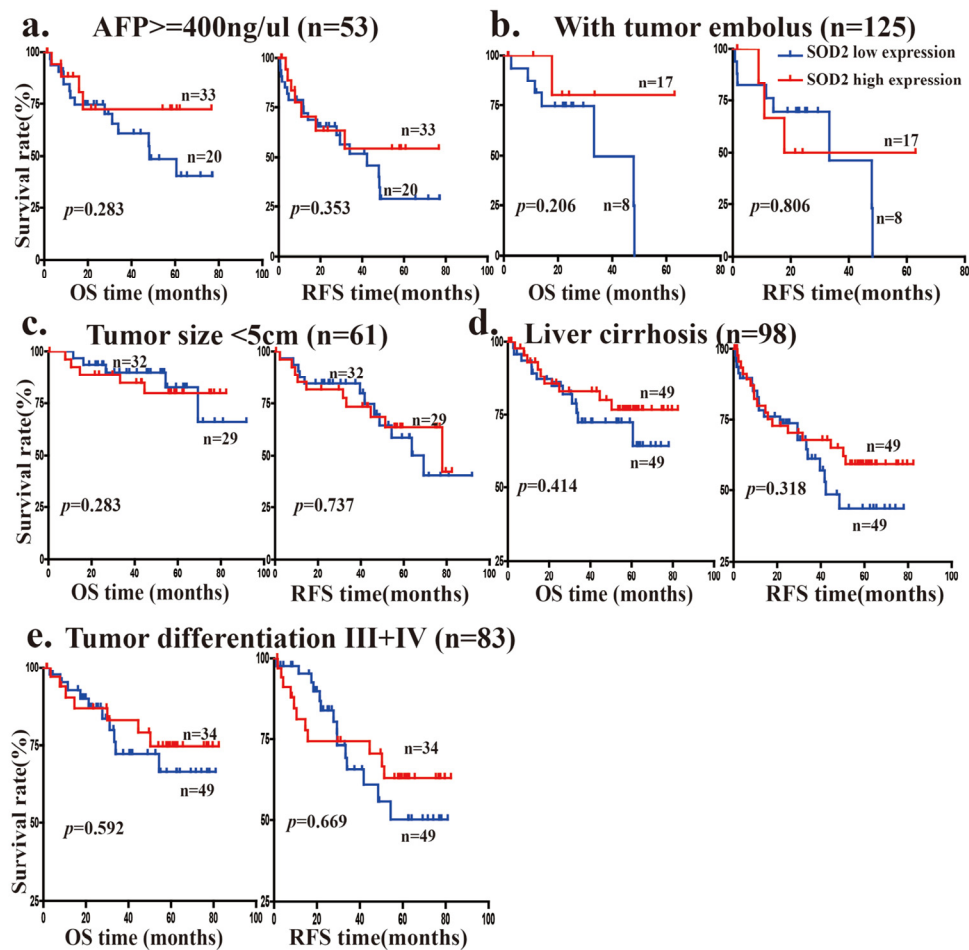


Figure S2. Overall survival (OS) and relapse-free survival (RFS) in advanced HCC patients with different SOD2 protein expression. The OS and RFS of 160 HCC patients with SOD2 high expression and low expression are analyzed in (a) patients with high AFP level ($> 400 \text{ ng}/\mu\text{l}$), (b) patients without tumor embolus, (c) patients with tumor size $< 5\text{cm}$, (d) patients no liver cirrhosis, (e) patients with tumor differentiation III+IV.

Table S1. Patients clinicopathological features

Features	Median (range)
SOD2 expression : IHC score	180 (10-300)
Age: years	49 (23-77)
AFP: ng/mL	51.9 (0.91-724631)
Tumor size: cm	6 (1-20)
	No. of cases (%)
No. of patients	160 (100%)
Tumor Differentiation	
I	18 (11.3%)
II	65 (40.6%)
III	73 (45.6%)
IV	4 (2.5%)
TNM Stage	
I	100 (62.5%)
II	20 (12.5%)
III	40 (25%)
BCLC Stage	
0	8 (5.00%)
A	94 (58.8%)
B	29 (18.1%)
C	29 (18.1%)
Recurrence	
No	97 (60.6%)
Early (<24 mons)	39 (24.3%)
Late (≥24 mons)	24 (15.1%)