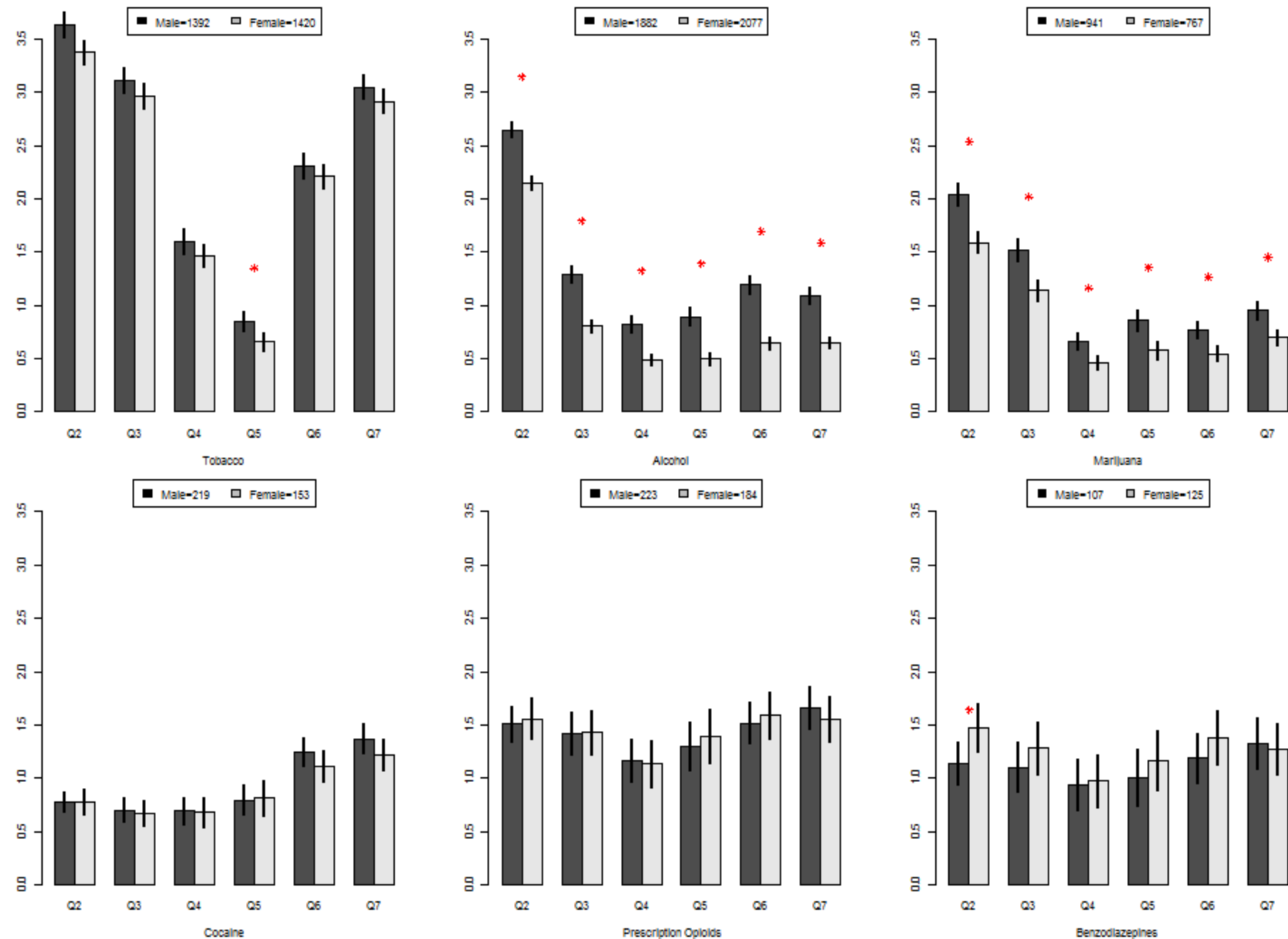
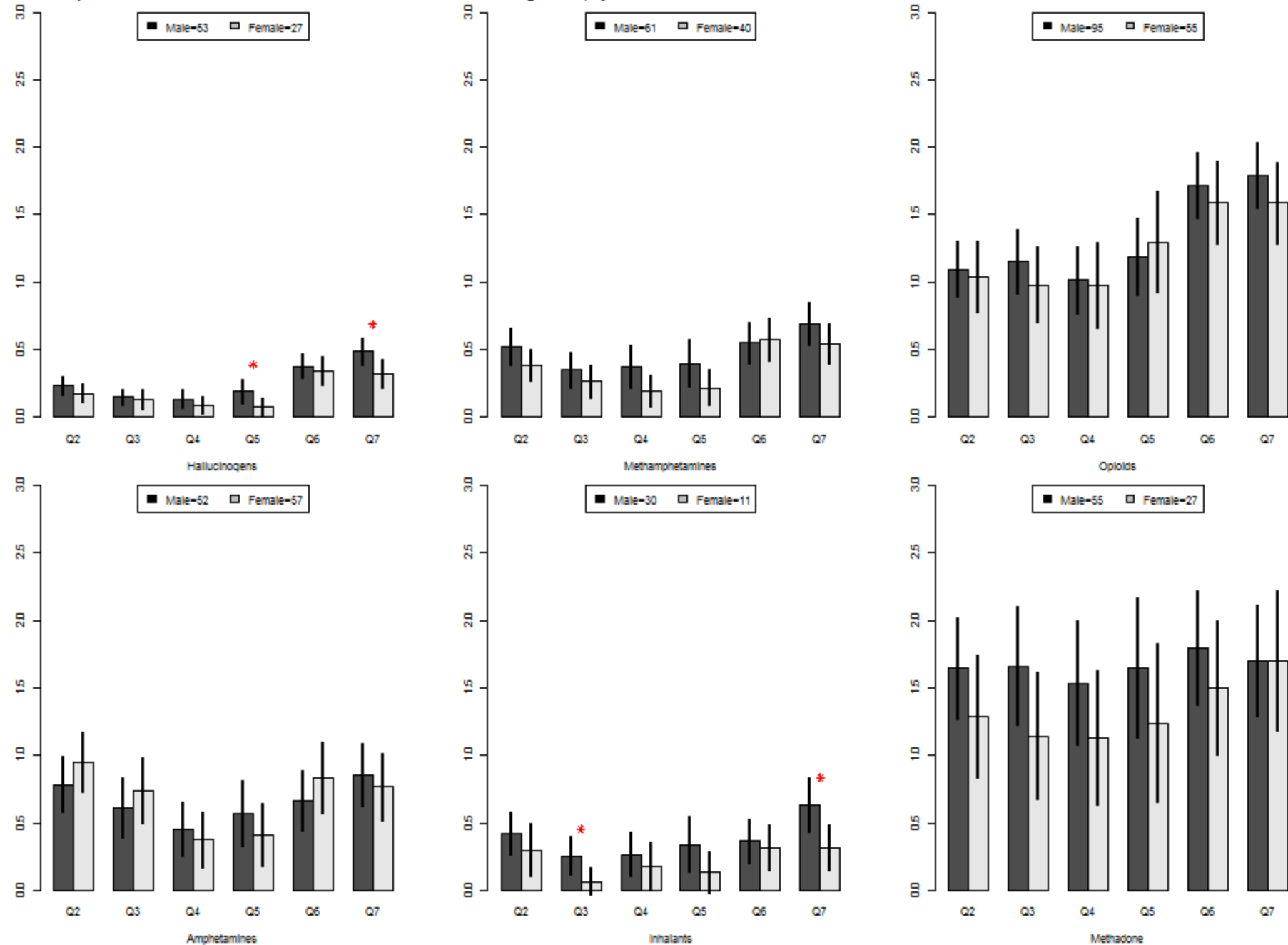


Figure 2a: Comparison of mean scores for each domain of the ASSIST between genders, by substance



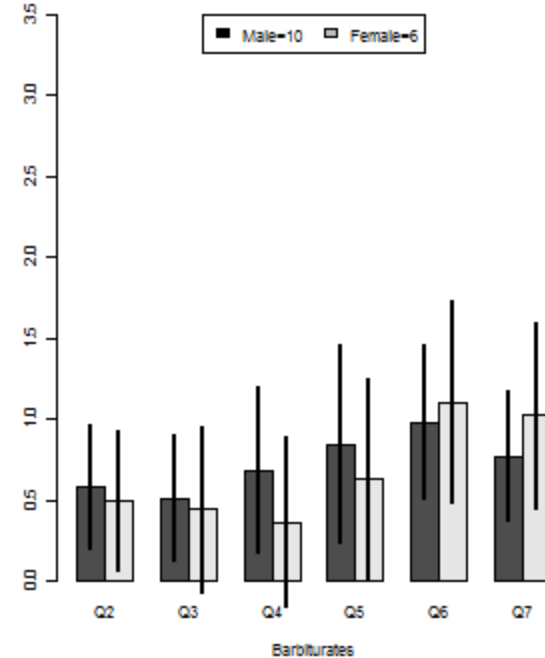
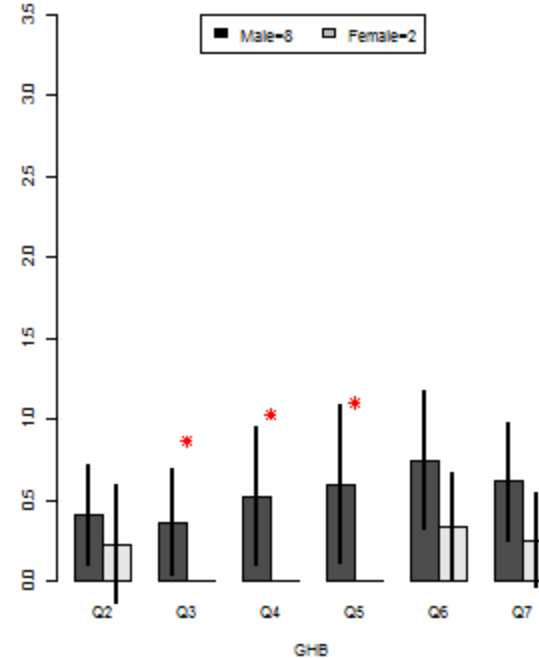
Q2 - 7 = Question 2 - 7 of the ASSIST. Each question covers a different domain:
 Q2- frequency of use; Q3- frequency of cravings; Q4- frequency of health, social, legal or financial problems;
 Q5- frequency of failed obligations; Q6- concern expressed by others; Q7- attempts to cut down or quit.
 The error bars correspond to: ex. 95% confidence intervals

Figure 2b: Comparison of mean scores for each domain of the ASSIST between genders, by substance



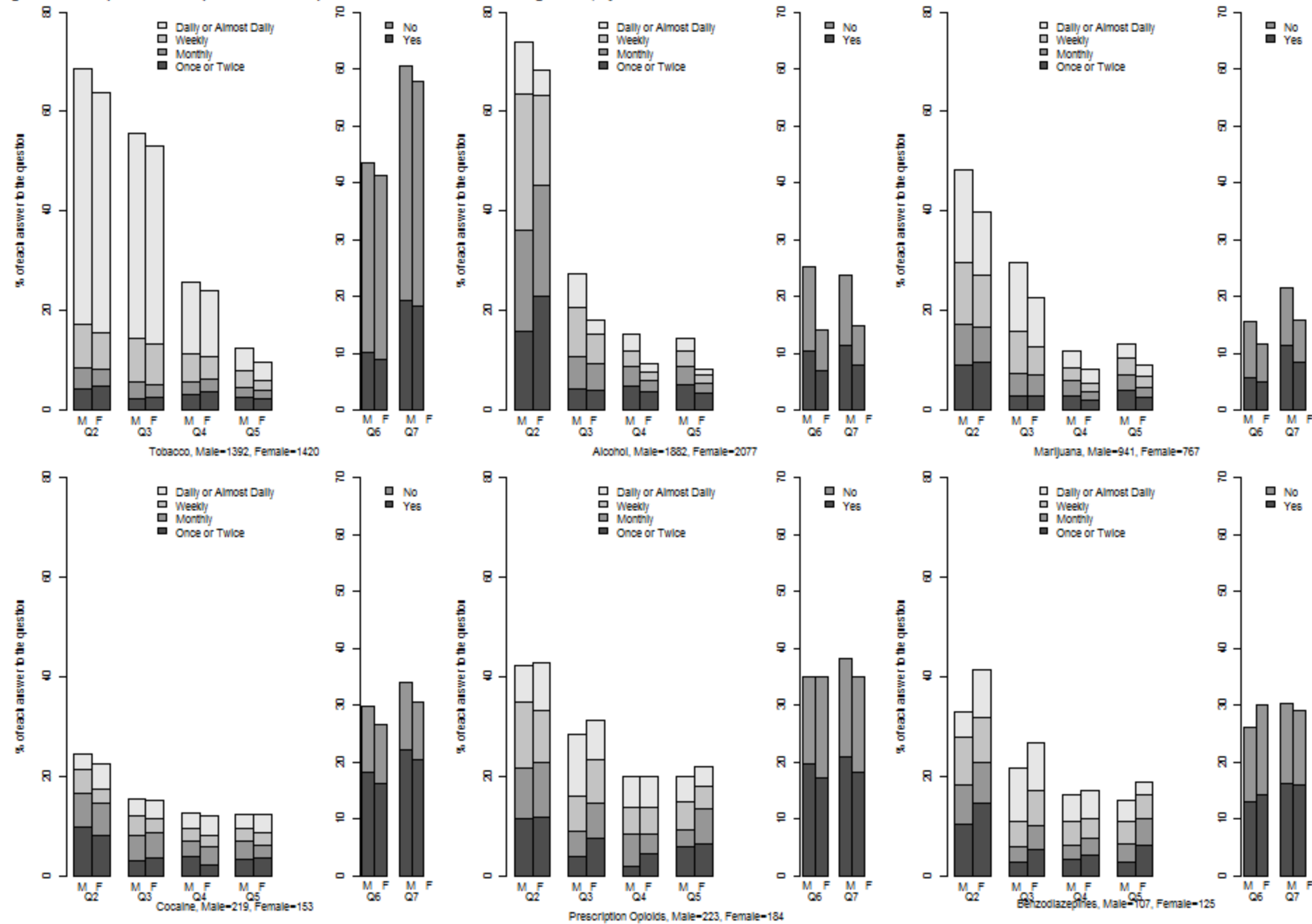
Q2 - 7 = Question 2 - 7 of the ASSIST. Each question covers a different domain:
 Q2- frequency of use; Q3- frequency of cravings; Q4- frequency of health, social, legal or financial problems;
 Q5- frequency of failed obligations; Q6- concern expressed by others; Q7- attempts to out down or quit
 The error bars correspond to : ex. 95% confidence intervals

Figure 2c: Comparison of mean scores for each domain of the ASSIST between genders, by substance



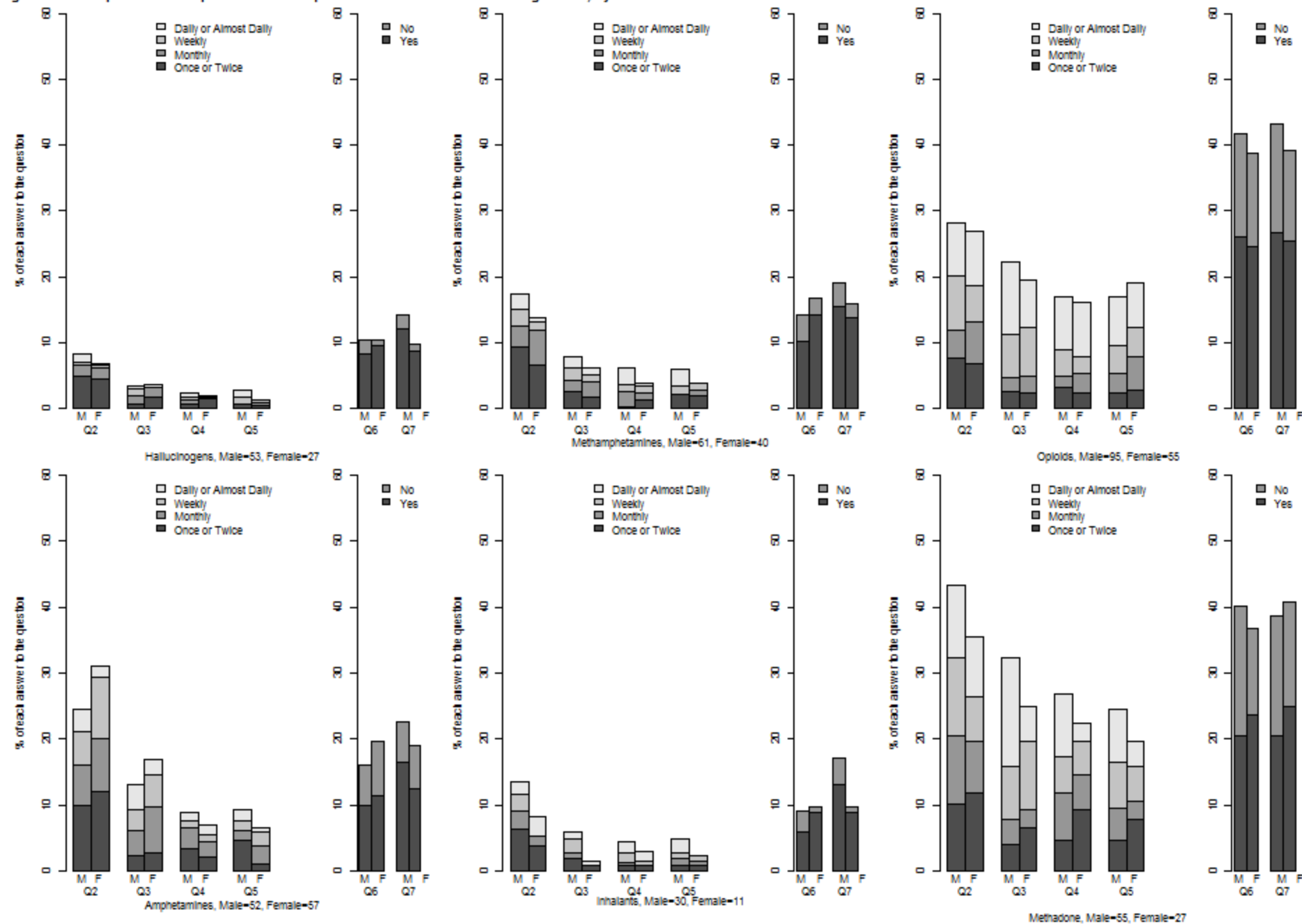
Q2 - 7 = Question 2 - 7 of the ASSIST. Each question covers a different domain:
 Q2- frequency of use; Q3- frequency of cravings; Q4- frequency of health, social, legal or financial problems;
 Q5- frequency of failed obligations; Q6- concern expressed by others; Q7- attempts to cut down or quit
 The error bars correspond to: ex. 95% confidence intervals

Figure 3a: Comparison of responses to each question of the ASSIST between genders, by substance



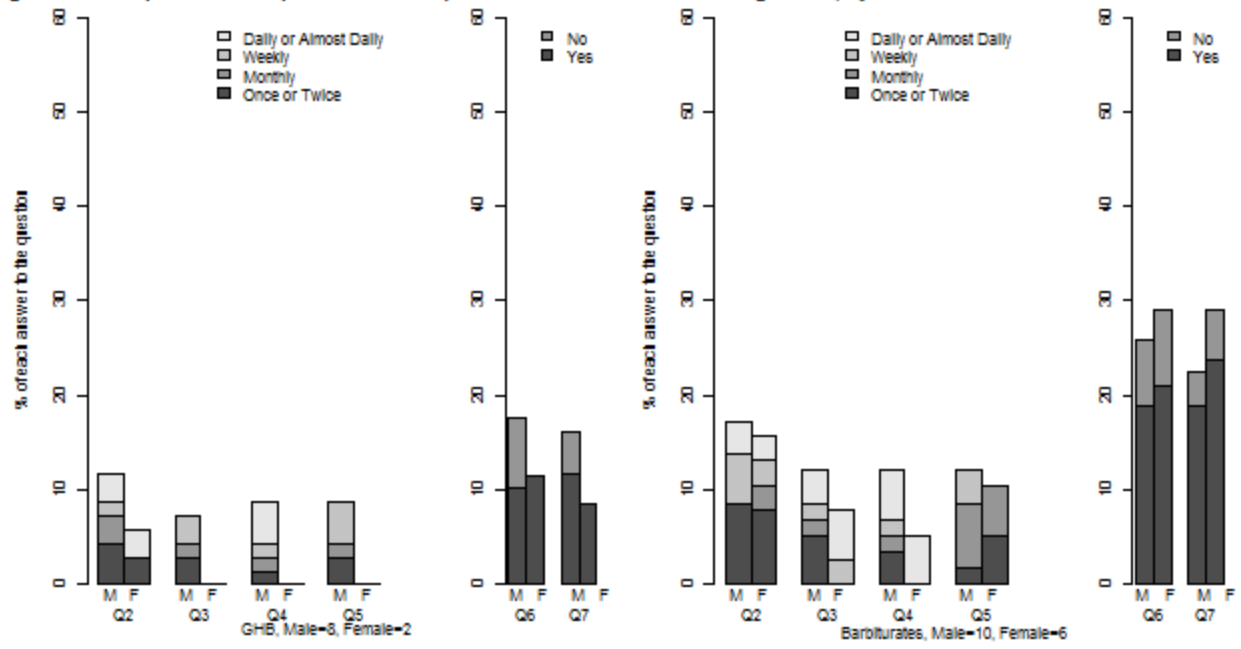
Q2 - 7 = Question 2 - 7 of the ASSIST. Each question covers a different domain:
 Q2- frequency of use; Q3- frequency of cravings; Q4- frequency of health, social, legal or financial problems;
 Q5- frequency of failed obligations; Q6- concern expressed by others; Q7- attempts to cut down or quit
 The error bars correspond to: ex. 95% confidence intervals

Figure 3b: Comparison of responses to each question of the ASSIST between genders, by substance



Q2 - 7 = Question 2 - 7 of the ASSIST. Each question covers a different domain:
 Q2- frequency of use; Q3- frequency of cravings; Q4- frequency of health, social, legal or financial problems;
 Q5- frequency of failed obligations; Q6- concern expressed by others; Q7- attempts to out down or quit
 The error bars correspond to: ex. 95% confidence intervals

Figure 3c: Comparison of responses to each question of the ASSIST between genders, by substance



Q2 - 7 = Question 2 - 7 of the ASSIST. Each question covers a different domain:
 Q2- frequency of use; Q3- frequency of cravings; Q4- frequency of health, social, legal or financial problems;
 Q5- frequency of failed obligations; Q6- concern expressed by others; Q7- attempts to out down or quit
 The error bars correspond to : ex. 95% confidence intervals