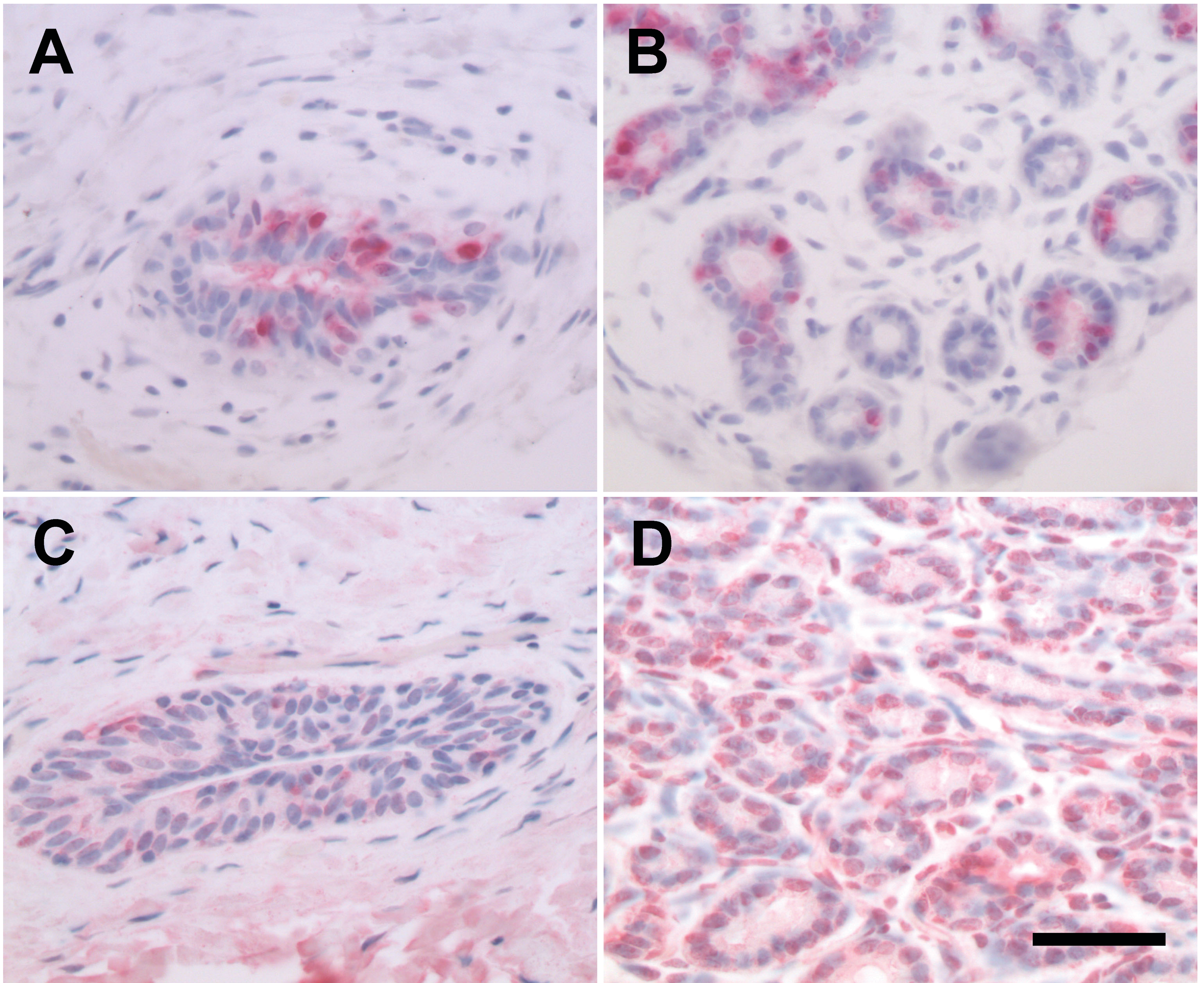


Supplementary Figure 2



Supplementary Figure 2. Representative photomicrographs of ER α staining in a transitional duct from a prepubertal animal (A); ER α staining in post-pubertal, differentiated lobuloalveolar tissue (B); ER β staining in prepubertal transitional duct (C); and ER β staining in mature lobuloalveolar tissue (D). Bar = 50 microns.