

**Annual Hazard rates of recurrence for breast cancer during 24 years of follow-up:
results from the International Breast Cancer Study Group**

Colleoni, et. al.

Table S1. Trials I-IV (1978-1981)

Trial	Population	Eligible Patients	Design	Median F-U Yrs.
I ^{1,2}	Premeno 1-3 N+	491	CMF vs. CMFp	26
II ^{2,3}	Premeno 4+N+	327	CMFp vs. Ox→CMFp	27
III ^{2,4,5,6}	Postmeno Age ≤65	463	Observation vs. p+T vs. CMFp+T	26
IV ^{2,5,6,7}	Postmeno Age 66-80	320	Observation vs. p+T	27

CMF (28-day cycles) x 12 cycles

C: Cyclophosphamide 100 mg/m² p.o. days 1-14
M: Methotrexate 40 mg/m² i.v. days 1 & 8
F: 5-Fluorouracil 600 mg/m² i.v. days 1 & 8
p: Prednisone 7.5 mg/m² p.o. daily x 12 months
T: Tamoxifen 20 mg p.o. daily x 12 months
Ox: Surgical oophorectomy

Table S2. Trial V—Three Populations (1981-1985)

Trial	Population	Eligible Patients	Design	Median F-U Yrs.
V/N-negative ⁸	Pre/post meno Node negative	1275	Observation vs. PeCMF	23
V/N-positive ⁹	Premeno Node positive	715	PeCMF vs. PeCMF+ConCMF vs. ConCMF	22
V/N-positive ⁹	Postmeno Node positive	514	PeCMF vs. PeCMF+ConCMF+pT vs. ConCMF+pT	22

ConCMF—Conventionally-timed CMF (28-day cycles) x 6 cycles

C: Cyclophosphamide 100 mg/m² p.o. days 1-14
M: Methotrexate 40 mg/m² i.v. days 1 & 8
F: 5-Fluorouracil 600 mg/m² i.v. days 1 & 8
p: Prednisone 7.5 mg/m² p.o. daily x 6 months
T: Tamoxifen 20 mg p.o. daily x 6 months

PeCMF—Perioperative CMF (28-day cycles) x 1 cycle

Begin within 36 hours after mastectomy

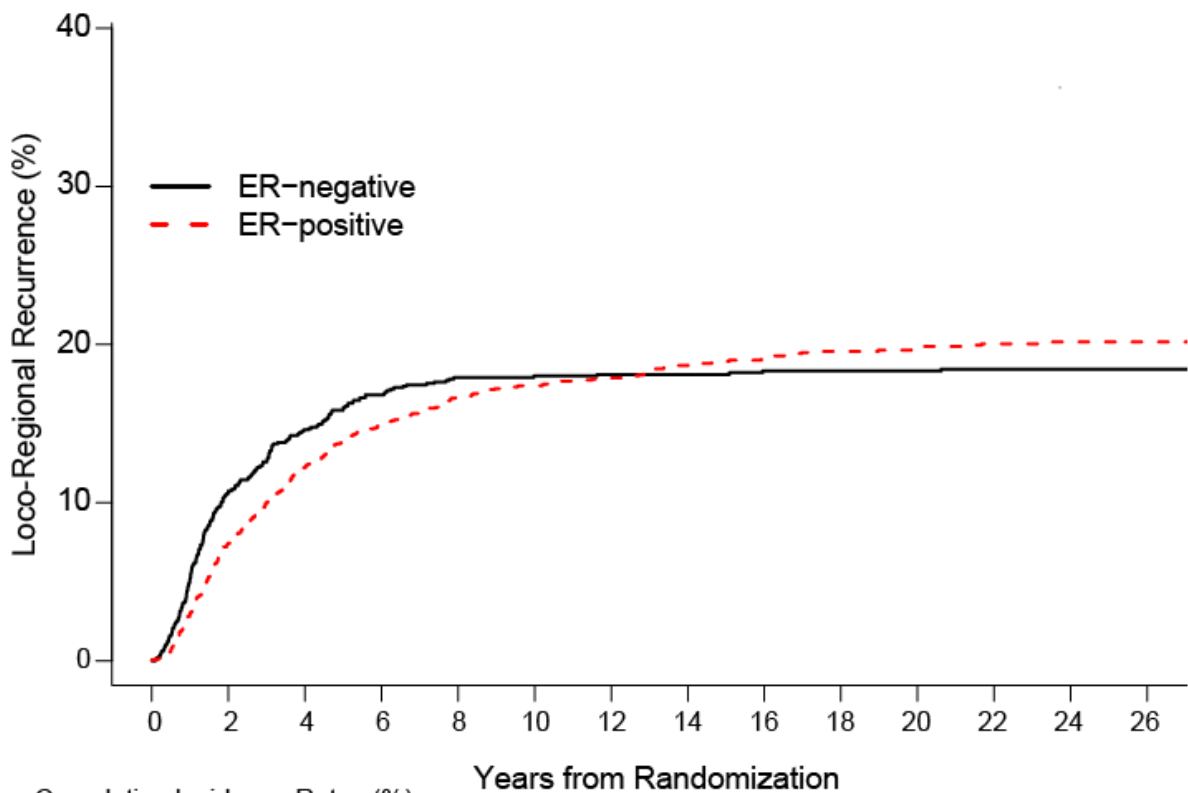
C: Cyclophosphamide 400 mg/m² i.v. days 1 & 8
M: Methotrexate 40 mg/m² i.v. days 1 & 8
F: 5-Fluorouracil 600 mg/m² i.v. days 1 & 8
Leucovorin® 15 mg i.v. 24 hours after Day 1
15 mg p.o. 24 hours after Day 8

Table S3. Duration of follow-up for 485 patients who died without breast cancer recurrence and for 1169 patients who were last known to be alive without recurrence

	Year						Total
	0-5	5-10	10-15	15-20	20-25	25+	
	N (%)	N (%)	N (%)	N (%)	N (%)	N (%)	N (%)
Duration of follow-up for patients who died without recurrence	88 (18%)	60 (12%)	86 (18%)	125 (26%)	95 (20%)	31 (6%)	485 (100%)
Duration of follow-up for patients who were last known to be alive without recurrence*	24 (2%)	114 (10%)	135 (12%)	98 (8%)	411 (35%)	387 (33%)	1169 (100%)

* Among the 1169 patients who were last known to be alive without recurrence, 88%, 76%, 68%, and 33% were followed for at least 10, 15, 20, and 25 years, respectively.

Figure S1. Cumulative Incidence plot of local/regional as the first site of recurrence, with recurrences in other sites and deaths without recurrence considered as competing events.



Cumulative Incidence Rates (%)

Years from Randomization	ER- (%)	ER+ (%)
0	0.0	0.0
2	10.7	7.4
4	14.6	12.2
6	16.8	15.0
8	17.9	16.7
10	18.0	17.4
12	18.1	17.9
14	18.1	18.7
16	18.3	19.1
18	18.3	19.6
20	18.3	19.9
22	18.4	20.0
24	18.4	20.2
26	18.4	20.2

References

1. Ludwig Breast Cancer Study Group. A randomized trial of adjuvant combination chemotherapy with or without prednisone in premenopausal breast cancer patients with metastases in one to three axillary lymph nodes. *Cancer Res* 45:4454-4459, 1985
2. Castiglione-Gertsch M, Johnsen C, Goldhirsch A, Gelber RD, Rudenstam CM, Collins J, Lindtner J, Hacking A, Cortes-Funes, Forbes J, Simpson J, Tattersall MHN, Brunner K, Cavalli F, Senn HJ for the International Breast Cancer Study Group. The International (Ludwig) Breast Cancer Study Group Trials I-IV: 15 years follow-up. *Ann Oncol* 5:717-724, 1994
3. Ludwig Breast Cancer Study Group. Chemotherapy with or without oophorectomy in high-risk premenopausal patients with operable breast cancer. *J Clin Oncol* 3:1059-1067, 1985
4. Ludwig Breast Cancer Study Group. Randomised trial of chemoendocrine therapy, endocrine therapy, and mastectomy alone in postmenopausal patients with operable breast cancer and axillary node metastasis. *Lancet* i:1256-1260, 1984
5. Castiglione M, Gelber RD, Goldhirsch A. Adjuvant systemic therapy for breast cancer in the elderly: competing causes of mortality. *J Clin Oncol* 8:519-526, 1990
6. Paganì O, Price KN, Gelber RD, Castiglione-Gertsch M, Holmberg SB, Lindtner J, Thürlimann B, Collins J, Fey MF, Coates AS, Goldhirsch A for the IBCSG. Patterns of recurrence of early breast cancer according to estrogen-receptor status: A therapeutic target for a quarter of a century. *Breast Cancer Res Treat* 117:319–324, 2009
7. Crivellari D, Price K, Gelber RD, Castiglione-Gertsch M, Rudenstam CM, Lindtner J, Fey MF, Senn HJ, Coates AS, Collins J, Goldhirsch A for the IBCSG. Adjuvant endocrine therapy compared with no systemic therapy for elderly women with early breast cancer: 21-year results of International Breast Cancer Study Group Trial IV. *J Clin Oncol* 21:4517-23, 2003
8. Ludwig Breast Cancer Study Group. Prolonged disease-free survival after one course of perioperative adjuvant chemotherapy for node-negative breast cancer. *N Engl J Med* 320:491-496, 1989
9. Ludwig Breast Cancer Study Group. Combination adjuvant chemotherapy for node-positive breast cancer. Inadequacy of a single perioperative cycle. *N Engl J Med* 319:677-683, 1988