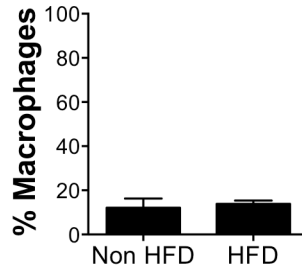
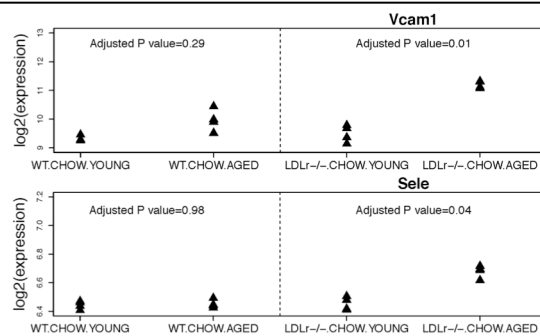


Rebuttal Figures a and b

For review purposes only



Rebuttal Figure a *WT aged mice do not accumulate macrophages in the aorta during HFD.* Aged wild type mice were fed a HFD for 1 month or left on a chow diet. At this point, aortas were harvested, digested to yield a cellular suspension. The cells were stained for macrophages (CD11b⁺ F4/80⁺) and the proportion of total cells in either group was assessed by flow cytometry. N = 3 / group.



Rebuttal Figure b Analysis of microarray data for the expression of VCAM-1 and E-selectin in WT and *Ldlr*^{-/-} young and aged mice maintained on a chow diet. Adjusted p values (q values) are shown with a FDR cut off at <0.05. N = 4 biological replicates / group.