

Supplemental Material

Table 1. Serum creatinine and cystatin-C based eGFR by MDRD and CKD-EPI equations at baseline.

Creatinine-based MDRD eGFR (ml/min/1.73 m ²)				
Mean±SD (N)	58.0±23.4 (436)	57.4±21.7 (454)	0.6 [-2.4, 3.6]	0.69
Range (Min,Max)	(16.0,148.7)	(15.2,129.9)		
Creatinine-based CKD-EPI eGFR (ml/min/1.73 m ²)				
Mean±SD (N)	58.5±23.1 (436)	58.2±21.5 (454)	0.3 [-2.6, 3.3]	0.82
Range (Min,Max)	(15.5,127.6)	(14.8,116.4)		
Cystatin-C-based CKD-EPI eGFR (ml/min/1.73 m ²)				
Mean±SD (N)	60.3±24.8 (435)	60.4±24.1 (451)	-0.1 [-3.3, 3.1]	0.95
Range (Min,Max)	(11.9,154.7)	(13.0,130.4)		

Figure 1.

CONSORT diagram for the CORAL Trial

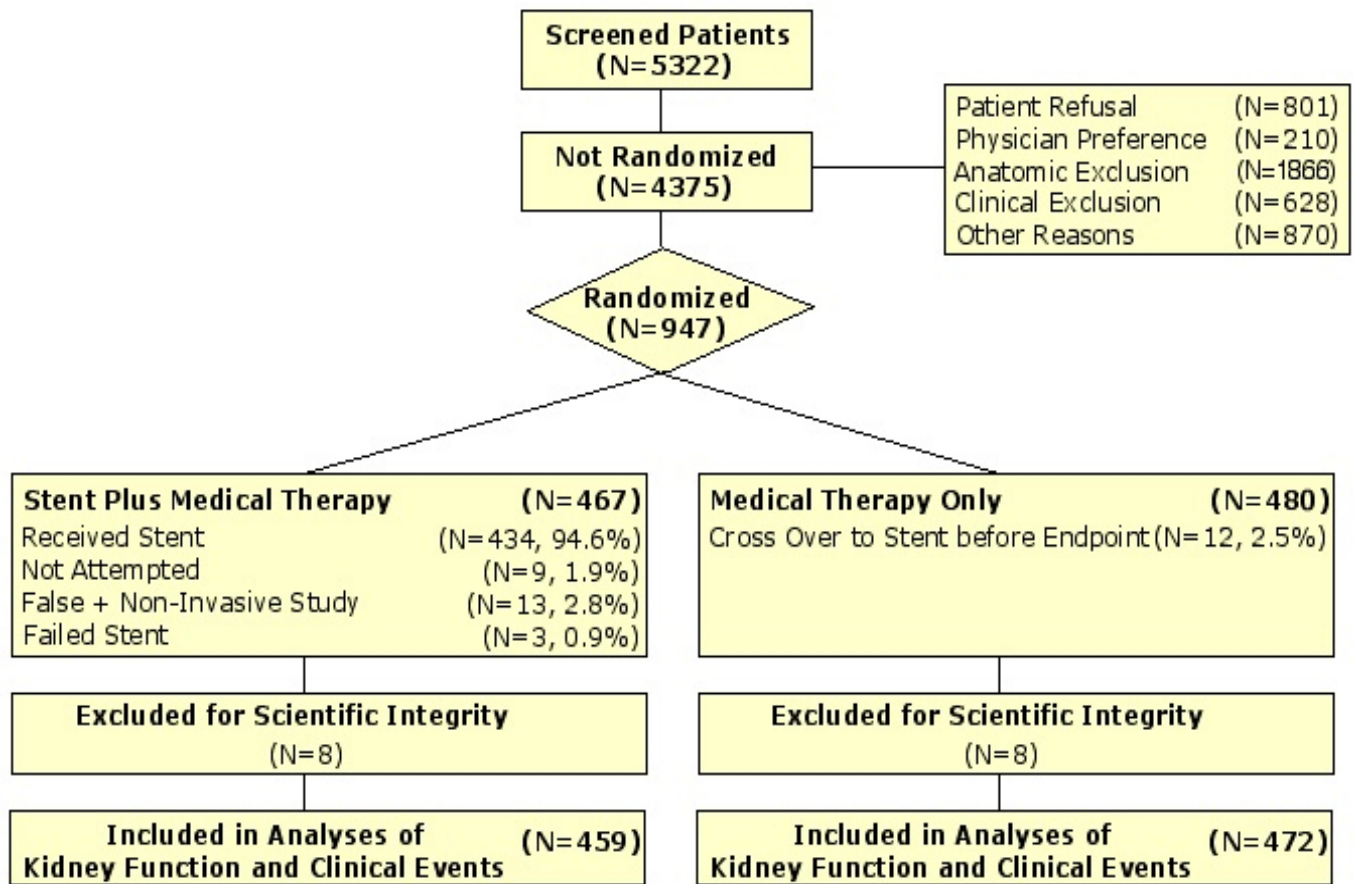
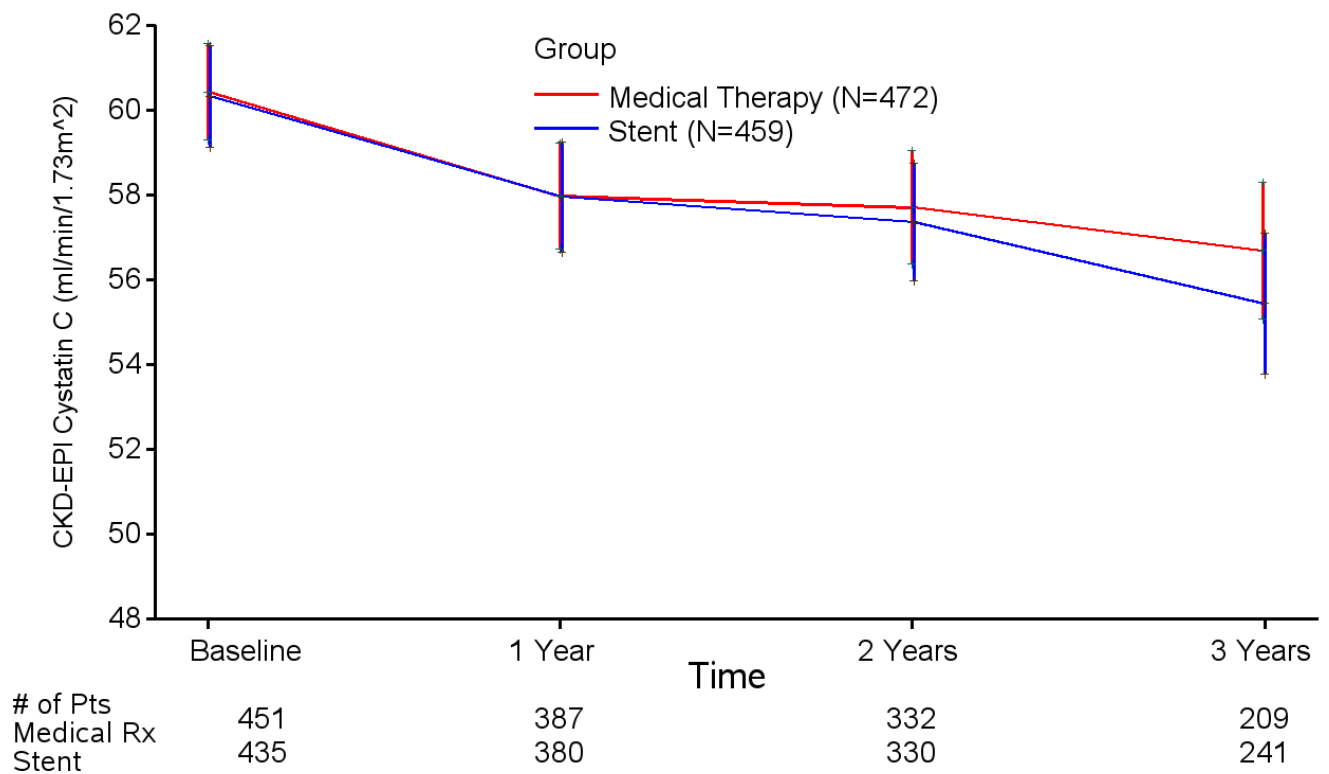


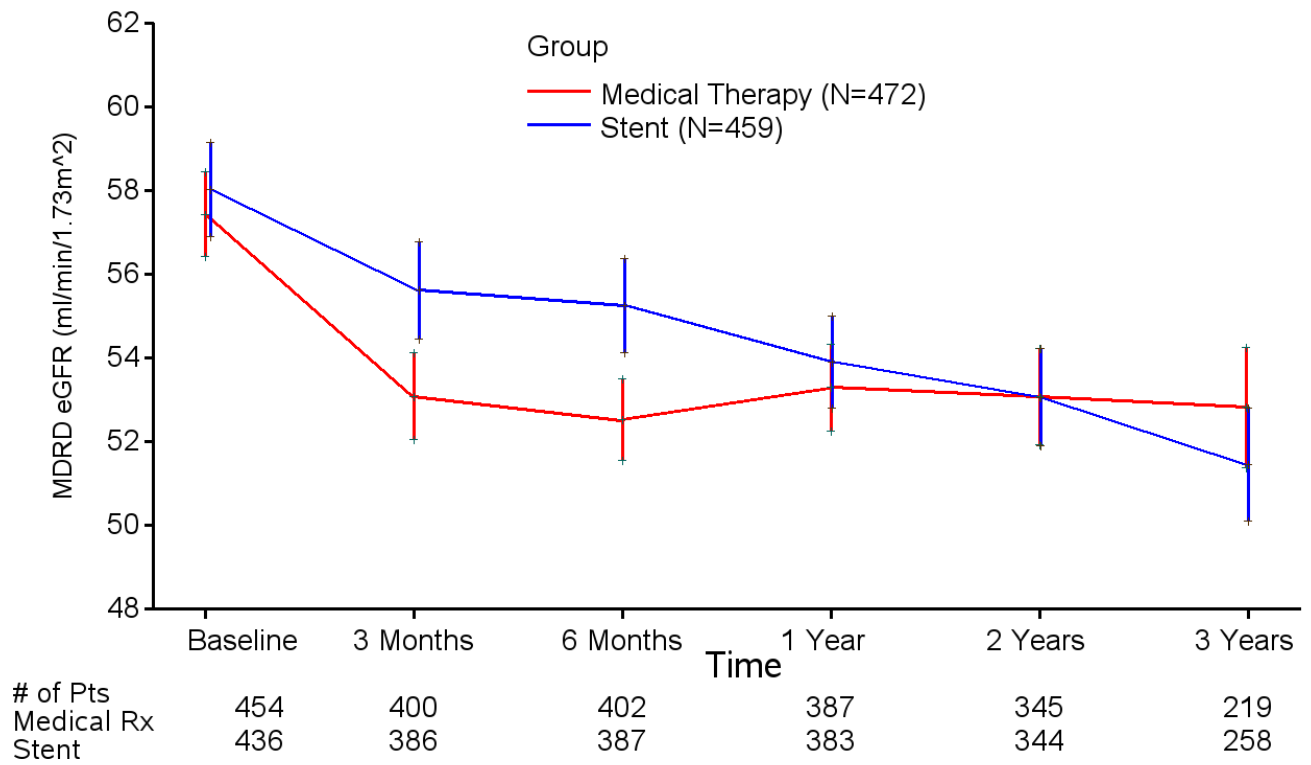
Figure 2. eGFR in randomized treatment groups of the CORAL trial.

a) CKD-EPI-cystatin C; b) MDRD-creatinine; c) CKD-EPI-creatinine. Time scales correspond to schedule of eGFR assessments: Serum cystatin C – baseline, then annually; Serum creatinine – baseline, 3 and 6 months, then annually from years 1 to 3.

a. CKD-EPI-cystatin-C eGFR (ml/min/1.73m²)



b. MDRD-creatinine eGFR (ml/min/1.73m²)



c. CKD-EPI-creatinine eGFR (ml/min/1.73m²)

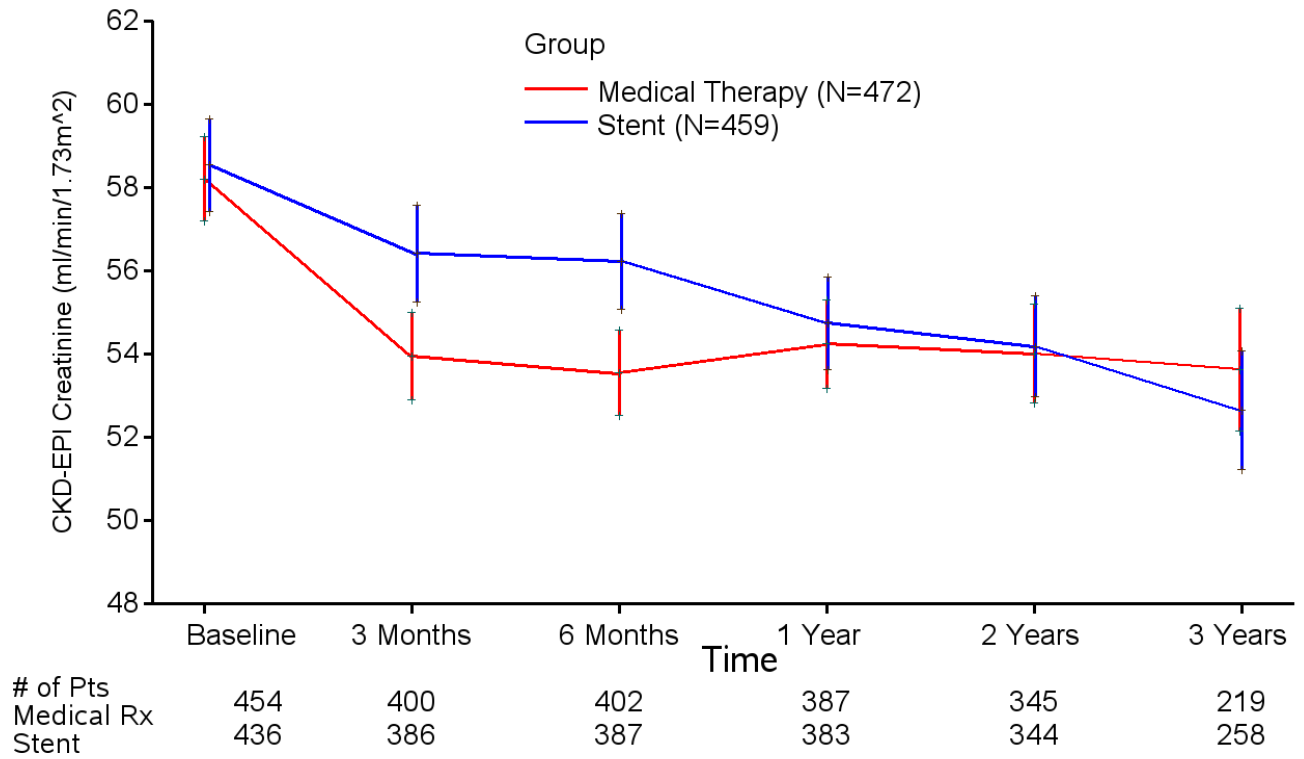
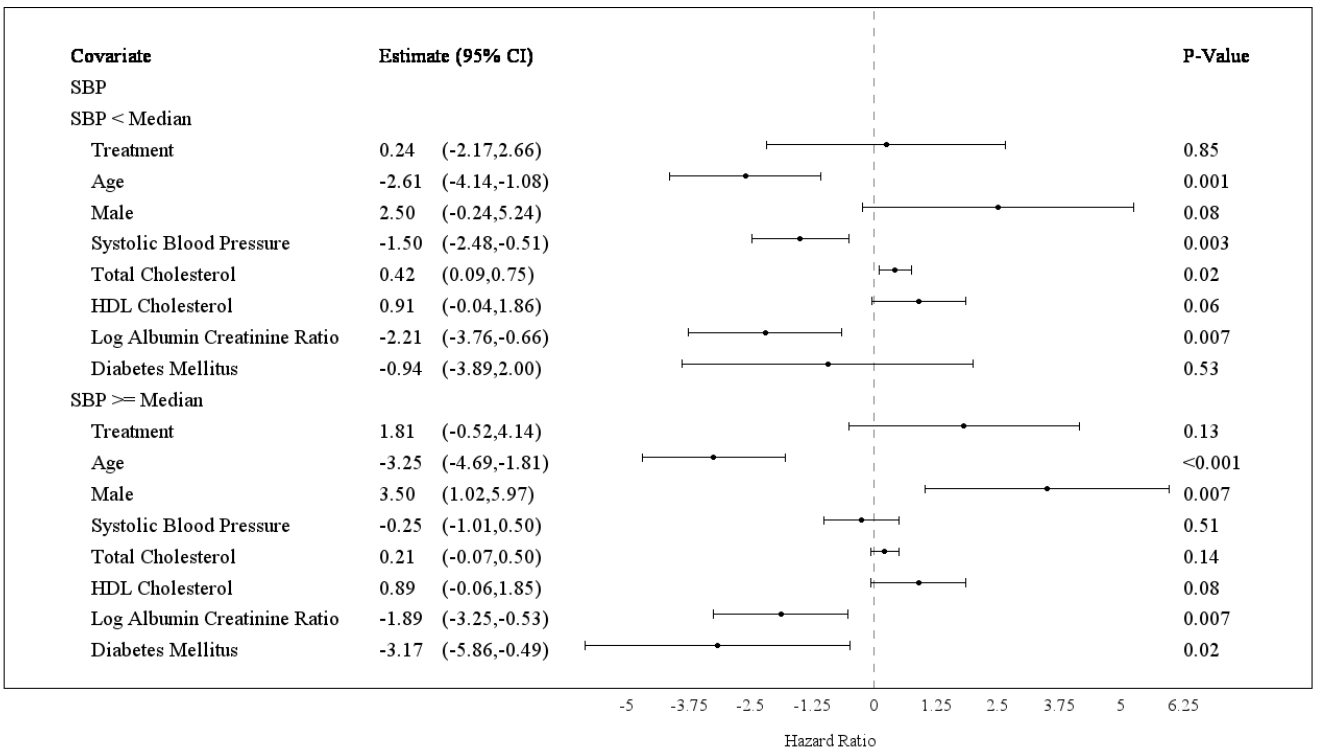
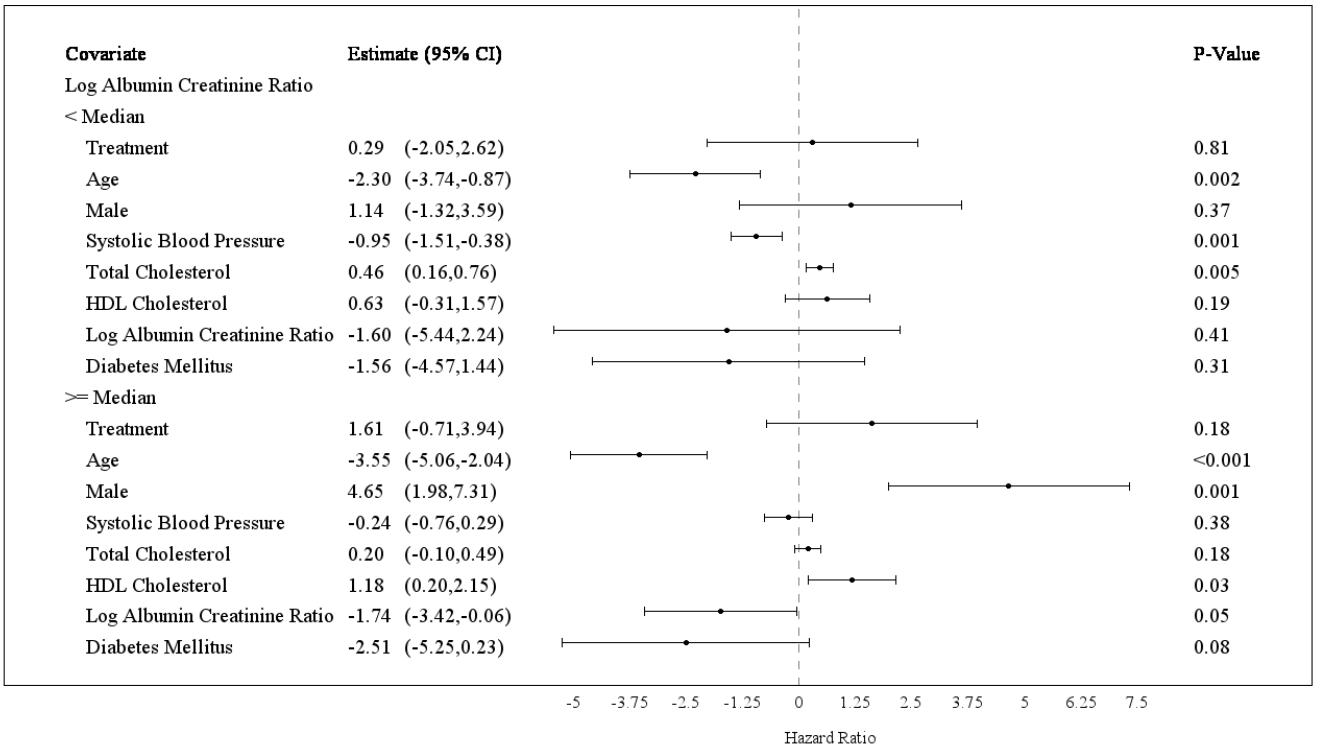
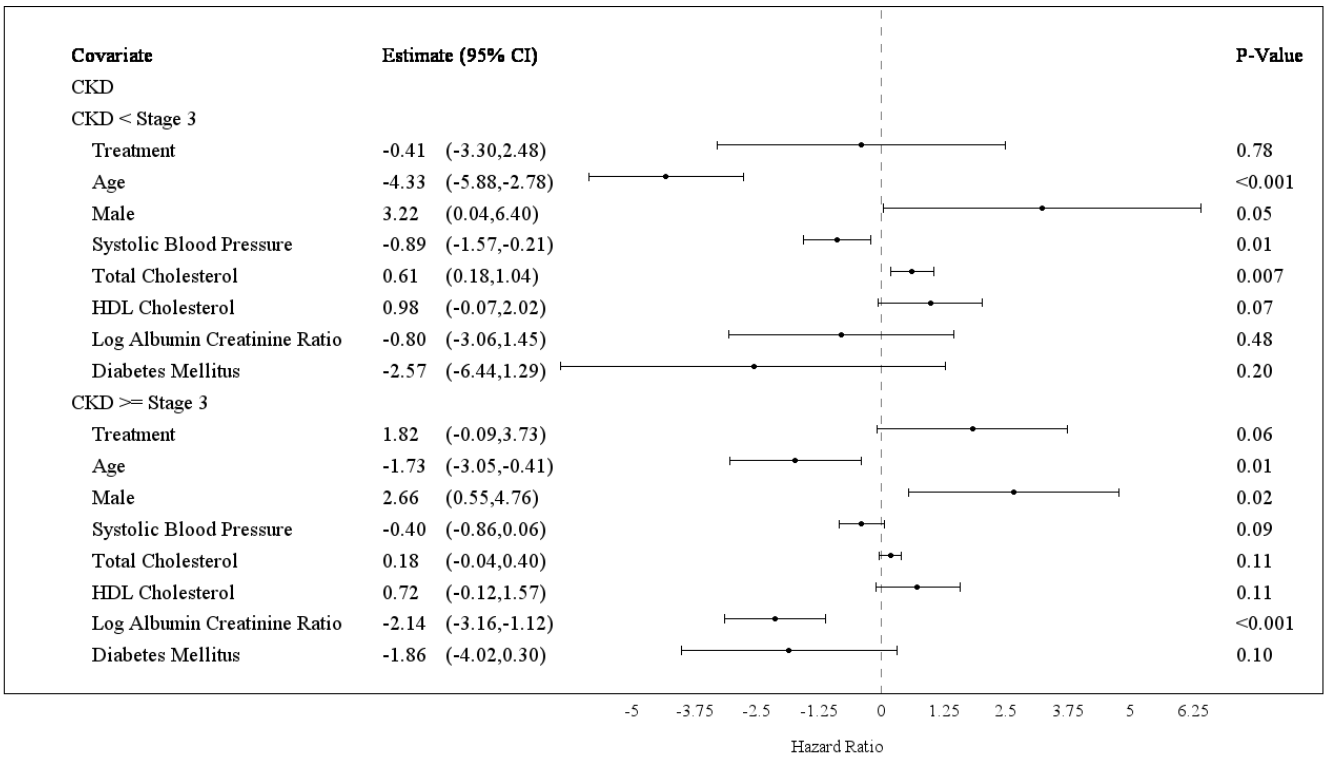
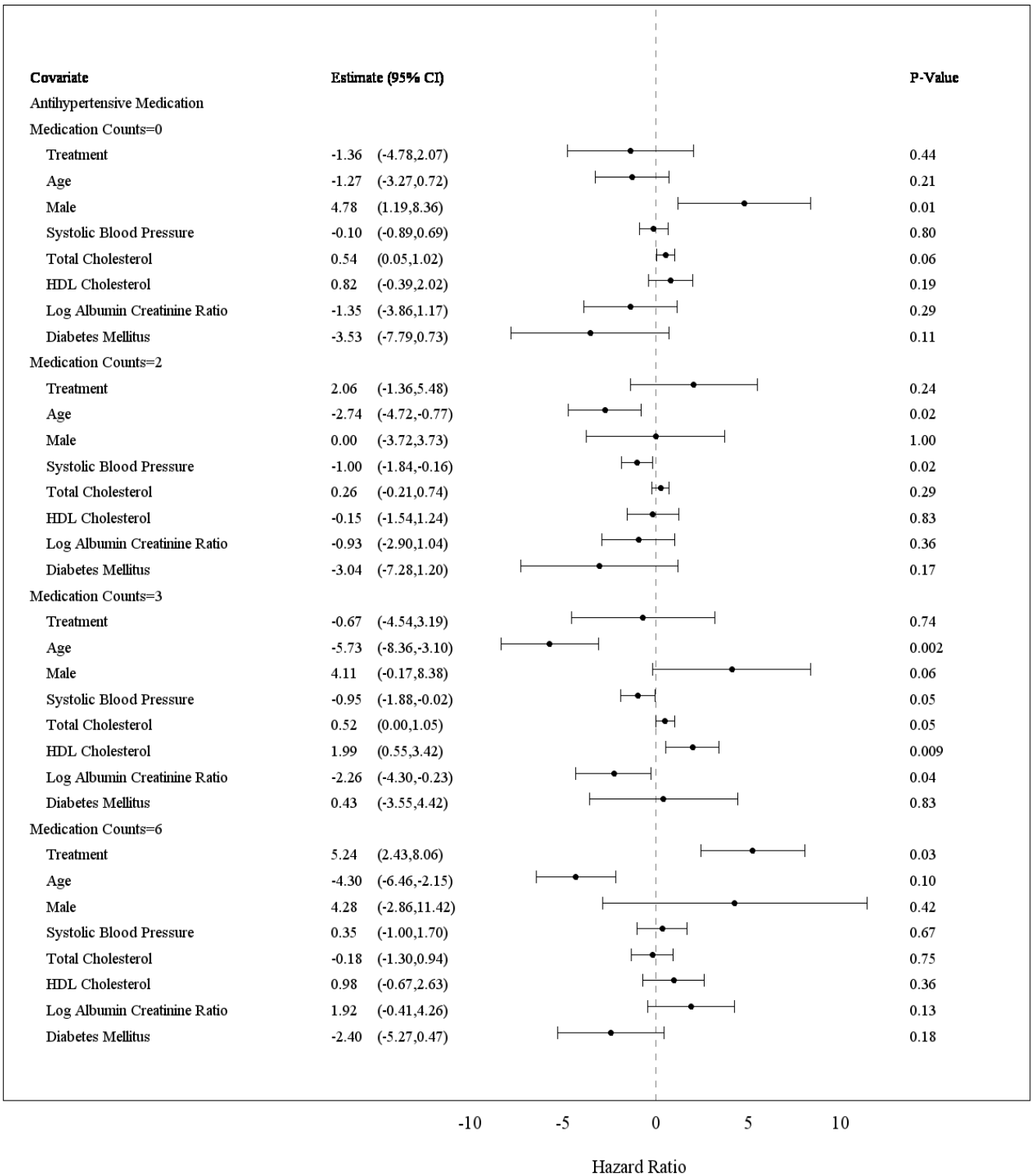
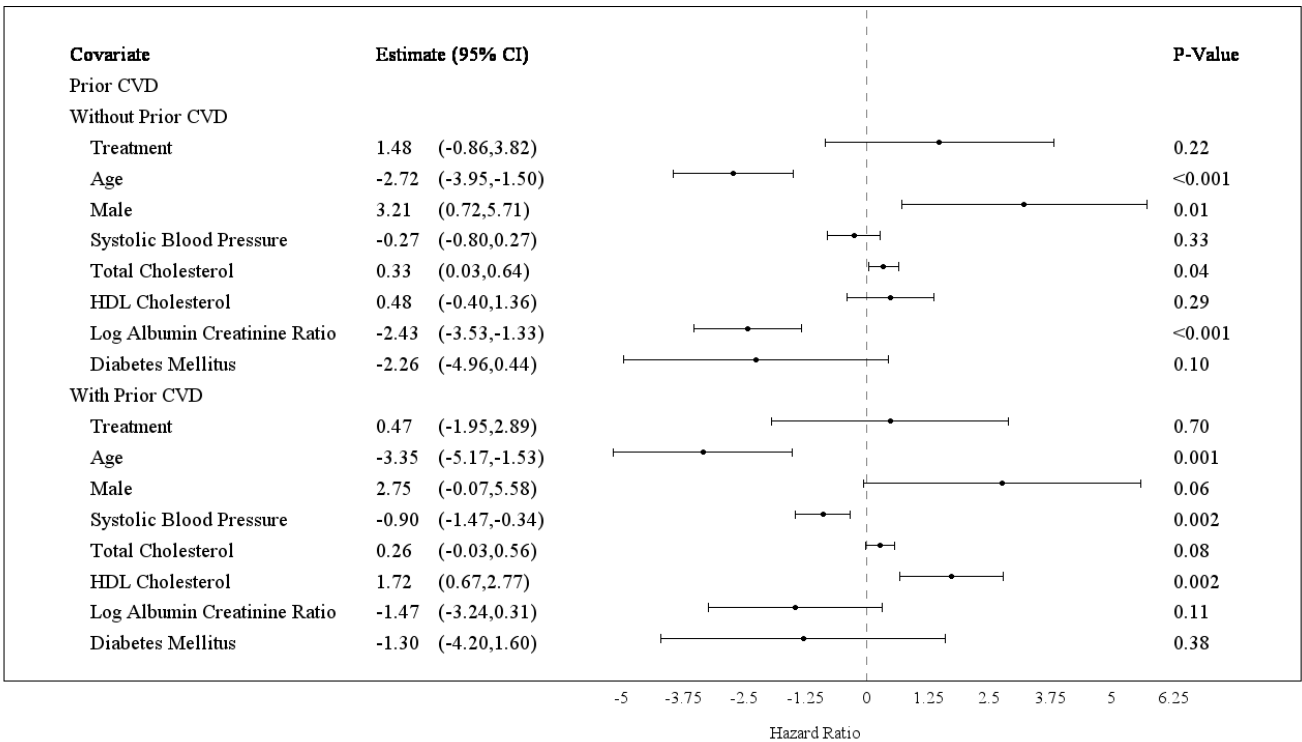
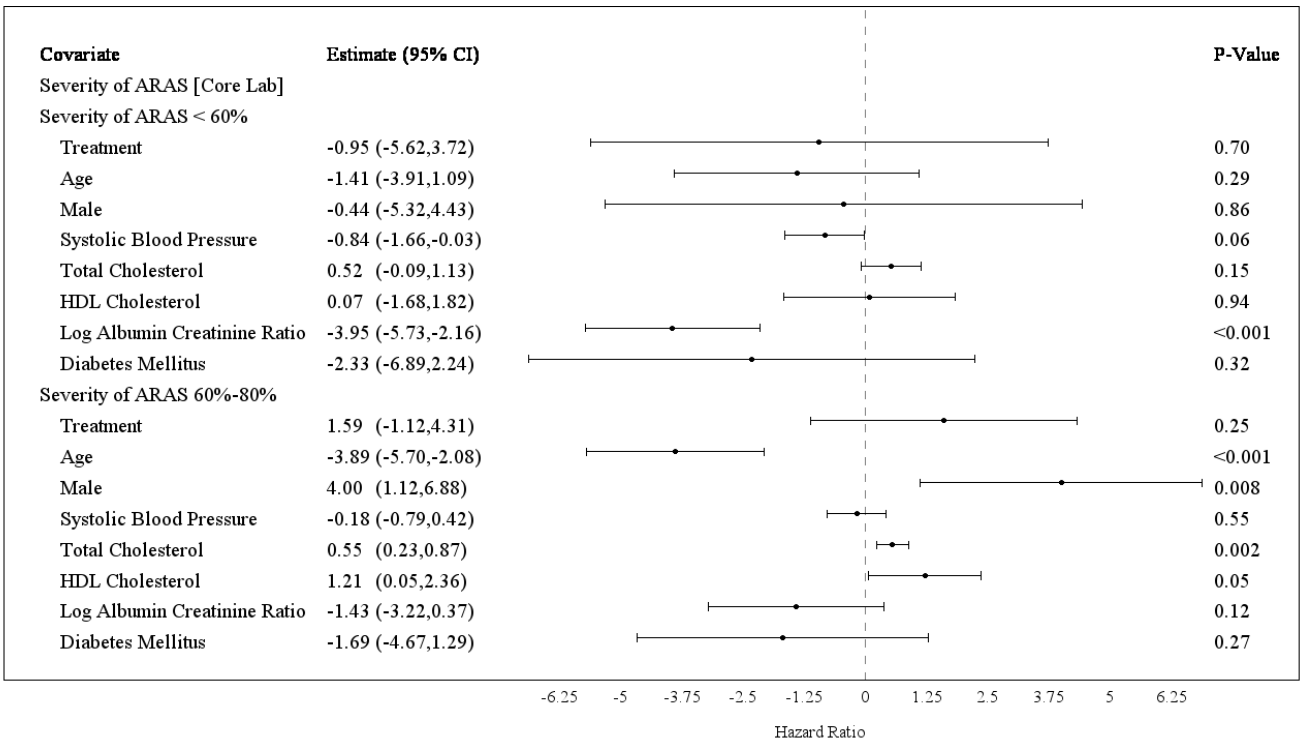


Figure 3. Forest plot displaying multivariate model for baseline covariates of eGFR (CKD-EPI-creatinine-cystatin-C) by subgroups.





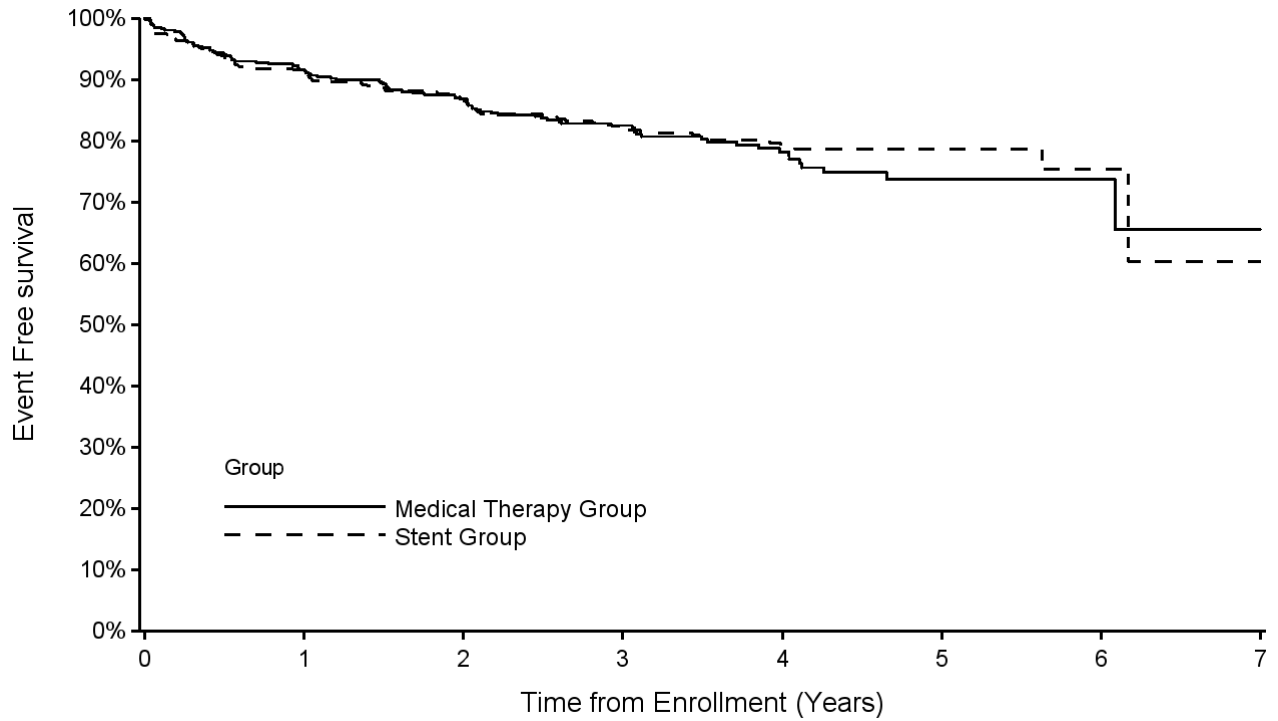




All models were treatment and visit adjusted. Age, sex, and treatment were forced into the multiple variable model. Covariates were added to the model sequentially and kept in the model if the significance level was $p < 0.1$ ($N=713$). Age is displayed per 10 years. Systolic blood pressure (SBP) is displayed per 10 mm Hg. Total cholesterol and HDL cholesterol are displayed per 10 mg/dL units. Log of urine albumin-to-creatinine ratio is displayed per SD. Estimates are per mean follow-up of 1.84 years.

Figure 4. Kaplan-Meier survival plot for CKD event outcomes (ESRD, >30% eGFR loss, and death due to kidney disease) in randomized treatment groups of the CORAL trial.

Log rank p=0.61.

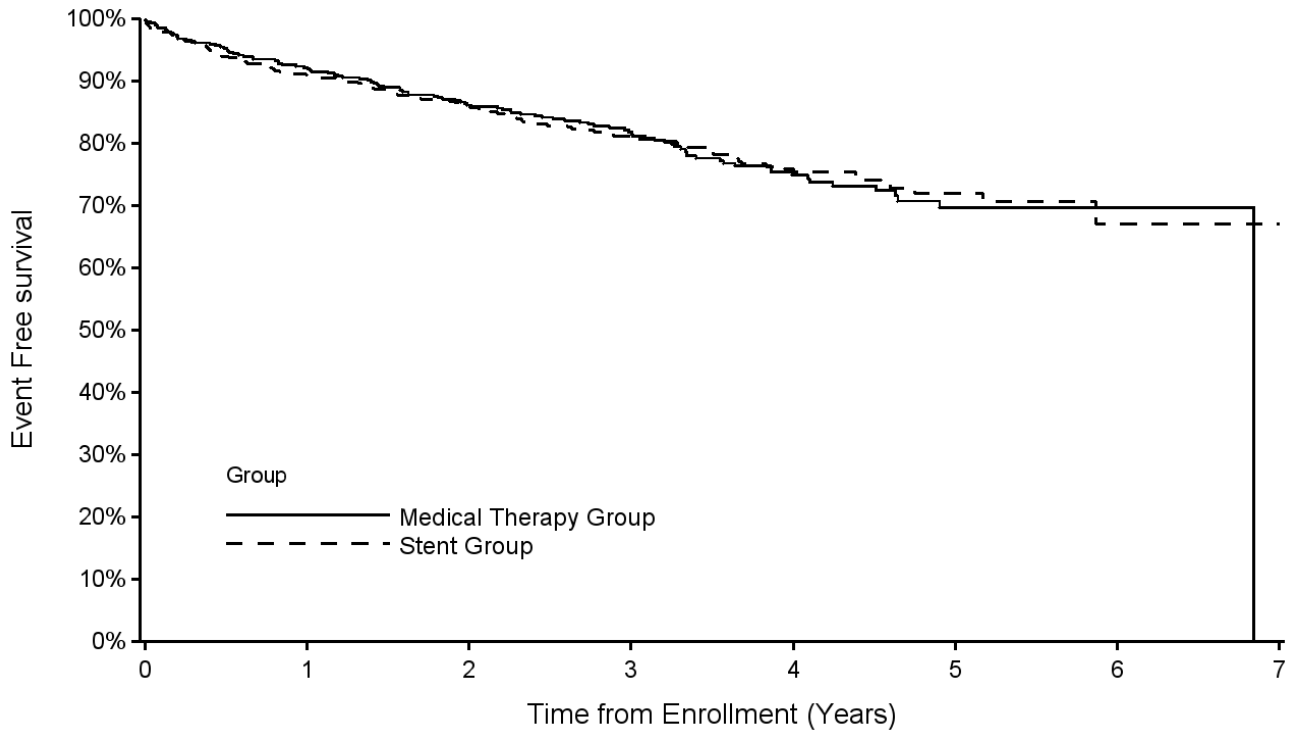


Number at risk

	0	1	2	3	4	5	6	7
Medical Therapy Group	472	472	395	348	241	131	49	10
Stent Group	459	457	381	345	253	149	56	10

Figure 5. Kaplan-Meier survival plot for CVD event outcomes (stroke, myocardial infarction, hospitalization for congestive heart failure, and death) in randomized treatment groups of the CORAL trial.

Log rank p=0.90.



Number at risk

Time (Years)	0	1	2	3	4	5	6	7
Medical Therapy Group	472	471	409	363	258	147	61	15
Stent Group	459	455	391	359	268	159	72	12