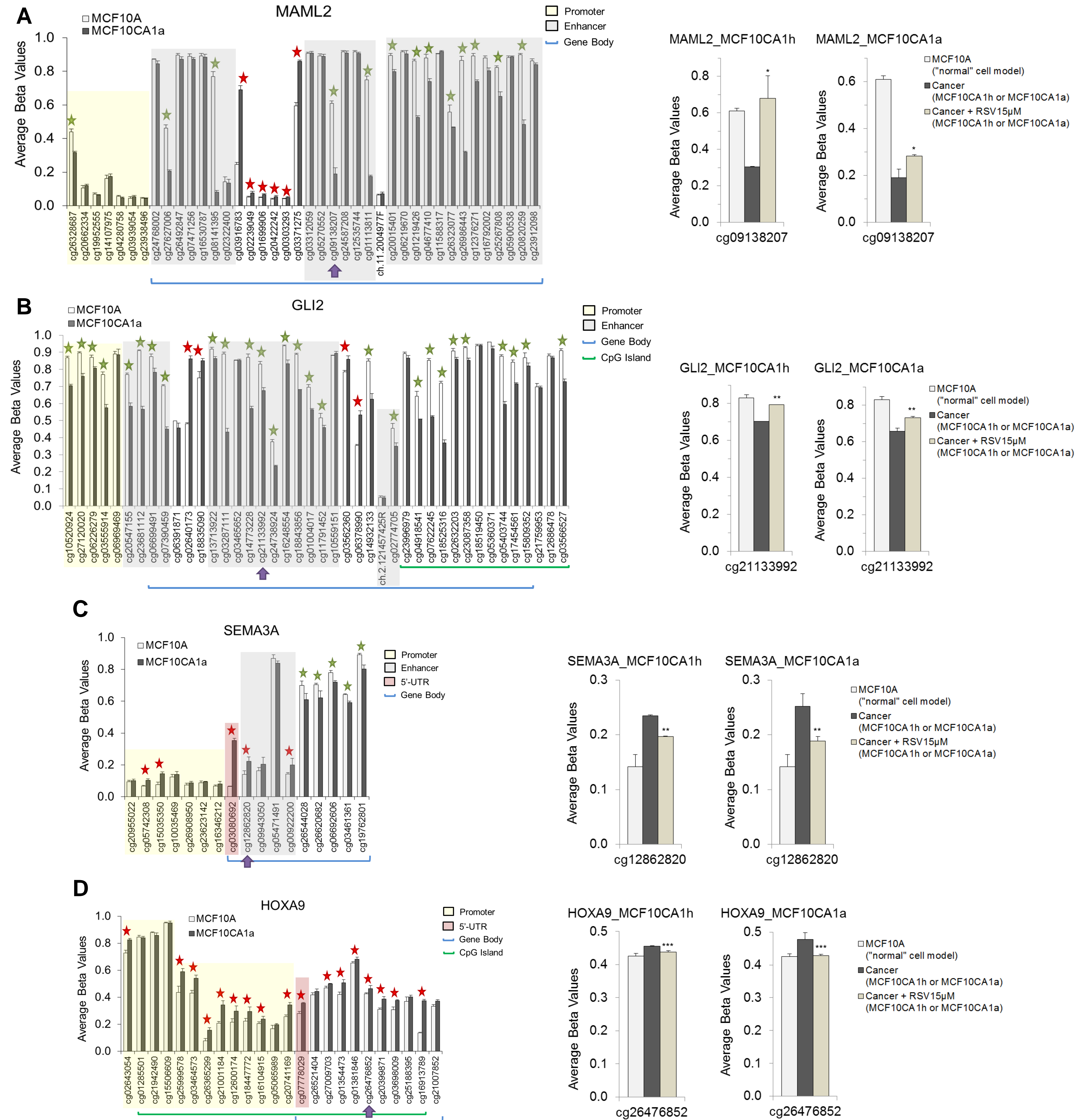


★ CpG site hypermethylated in cancer vs. normal

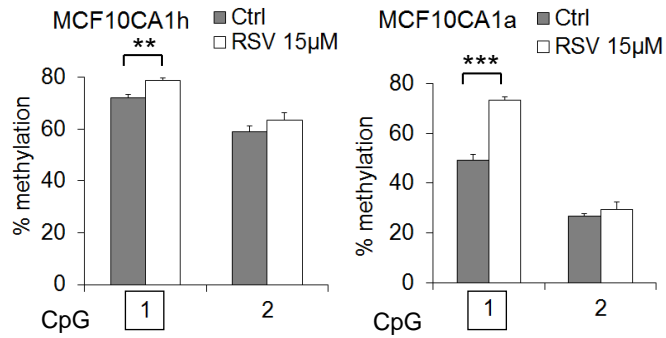
★ CpG site hypomethylated in cancer vs. normal

▲ CpG site affected by RSV

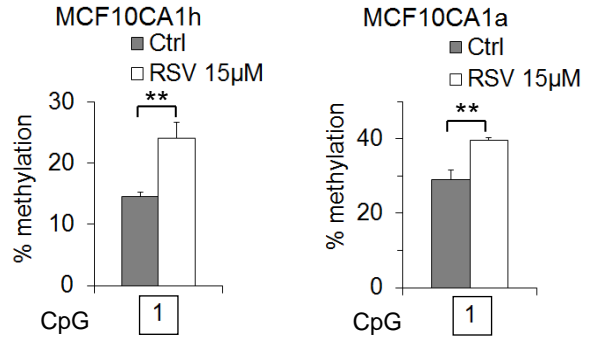


MOBP

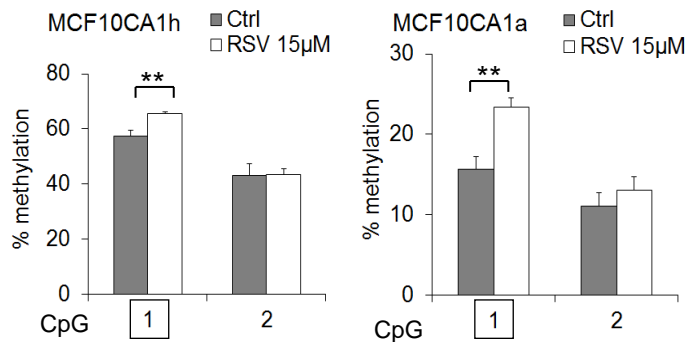
cg07405330 (Body, S_Shelf, Enhancer)

**HCRT2**

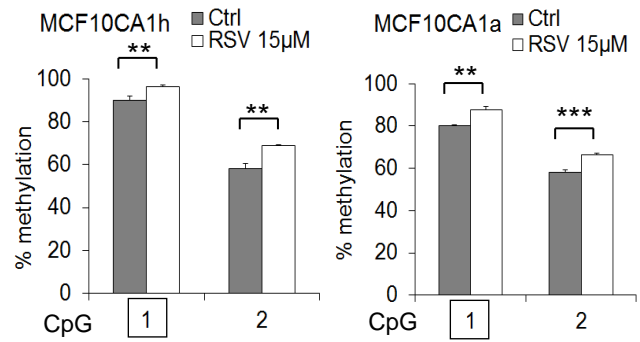
cg00293660 (Body)

**FGF7**

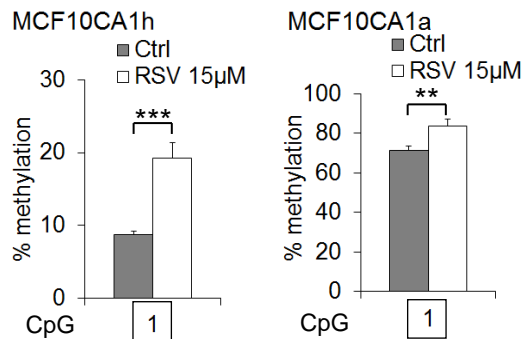
cg13597554 (Body, Enhancer)

**RNF150**

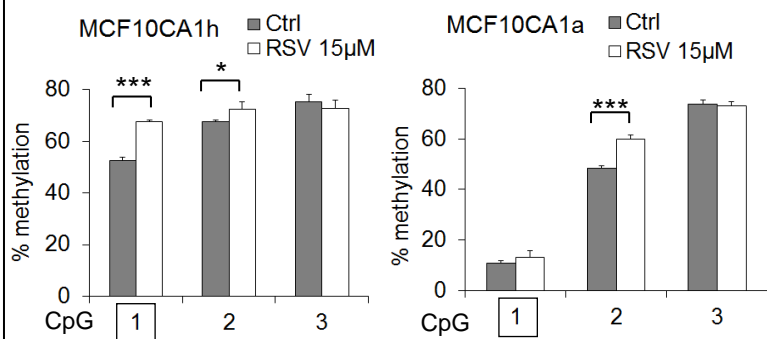
cg06763776 (Body, Enhancer)

**JMJD1C**

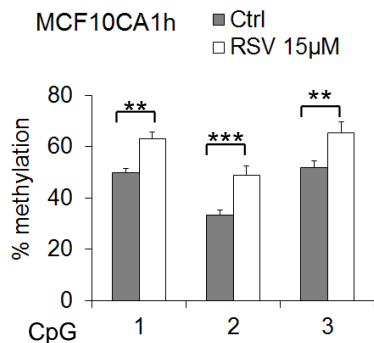
cg24409808 (Body, Enhancer)

**PRKG1**

cg05396900 (TSS1500, N_Shore)

**SH3PXD2B**

cg19032705_Neighboring CpGs (Body)

**NDUFS6**

cg19687193 (Body)

