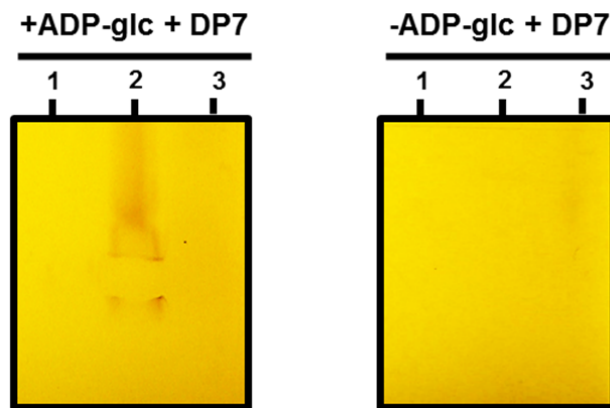


1



2

3

4 **Supplemental Figure 7. Zymogram analysis of glycogen/starch synthase activities.** Total
5 proteins of crude extracts of the wild type strain (WT), the 187G11 mutant strain and the
6 recombinant protein GlgA2, were separated by native PAGE without glycogen. The native
7 gels were then incubated with or without 3 mM ADP-glucose and 1.2 mM of maltoheptaose
8 (DP7). 1.2 mM maltoheptaose was also added prior to migration. Glycogen/starch synthase
9 activities are witnessed after iodine staining as a dark activity bands. The Wild type is able to
10 initiate glycogen synthesis while the 187G11 mutant and the recombinant protein GlgA2 are
11 enable do so. **1** : 187G11, **2** : WT, **3** : GlgA2.