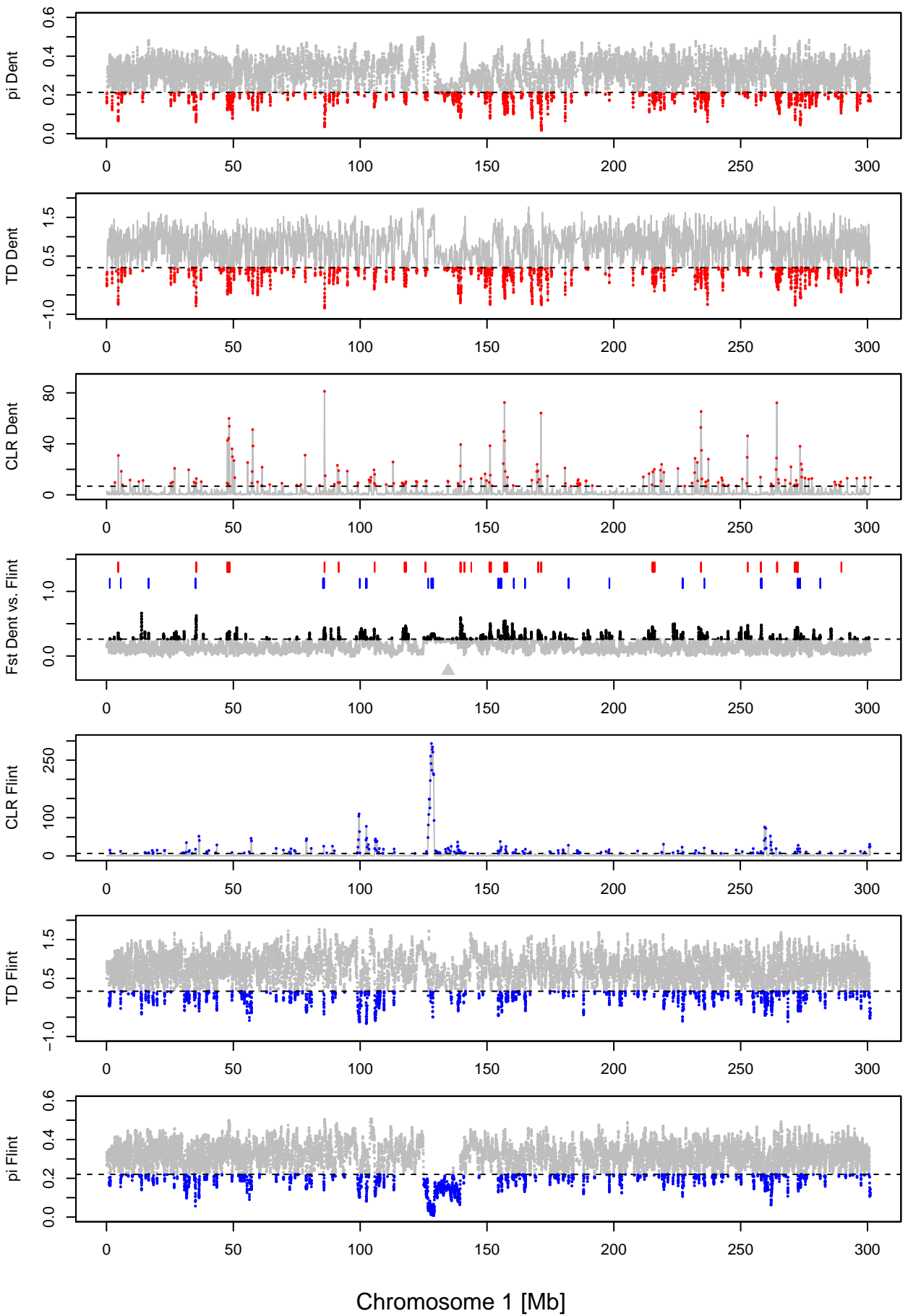
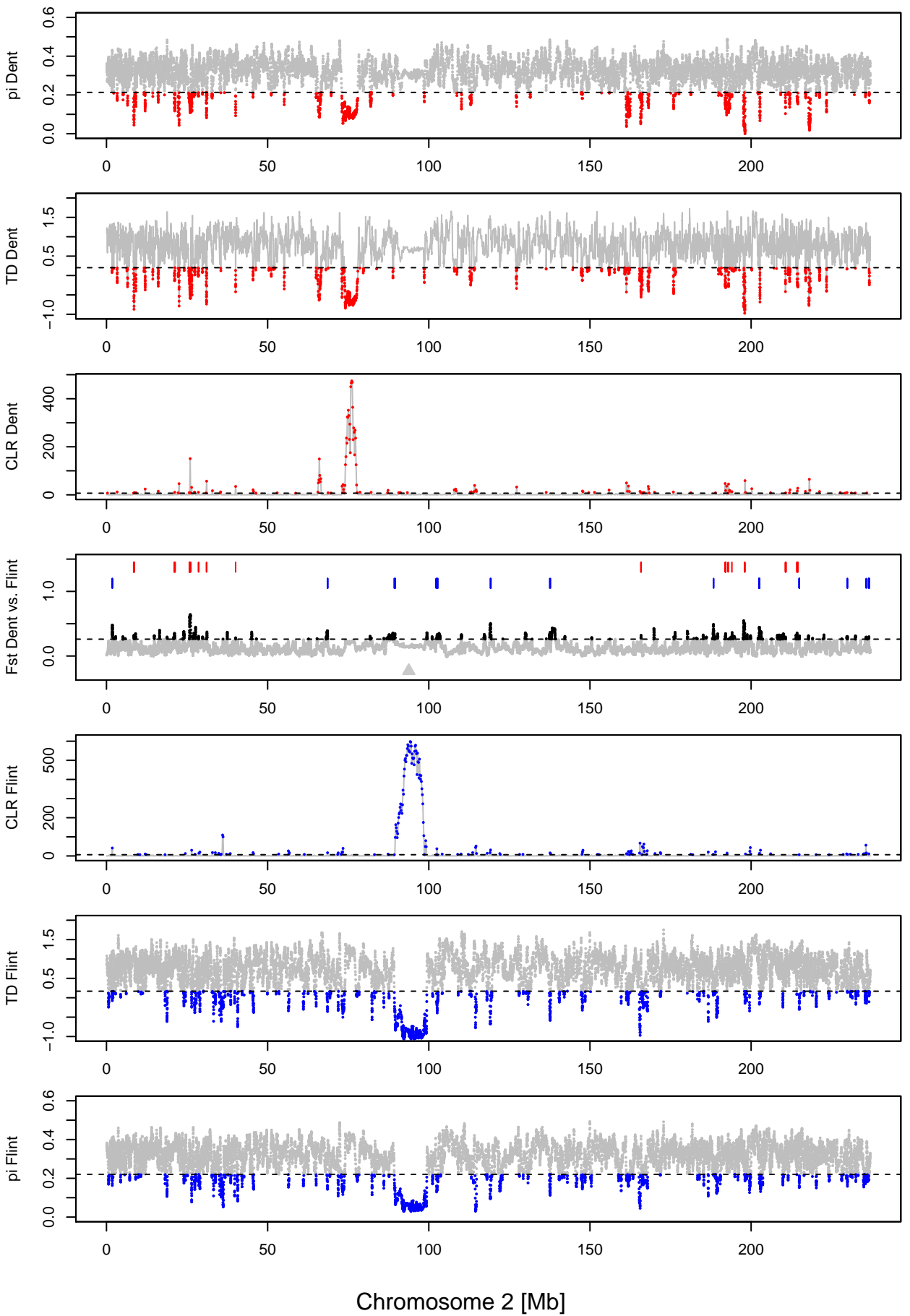
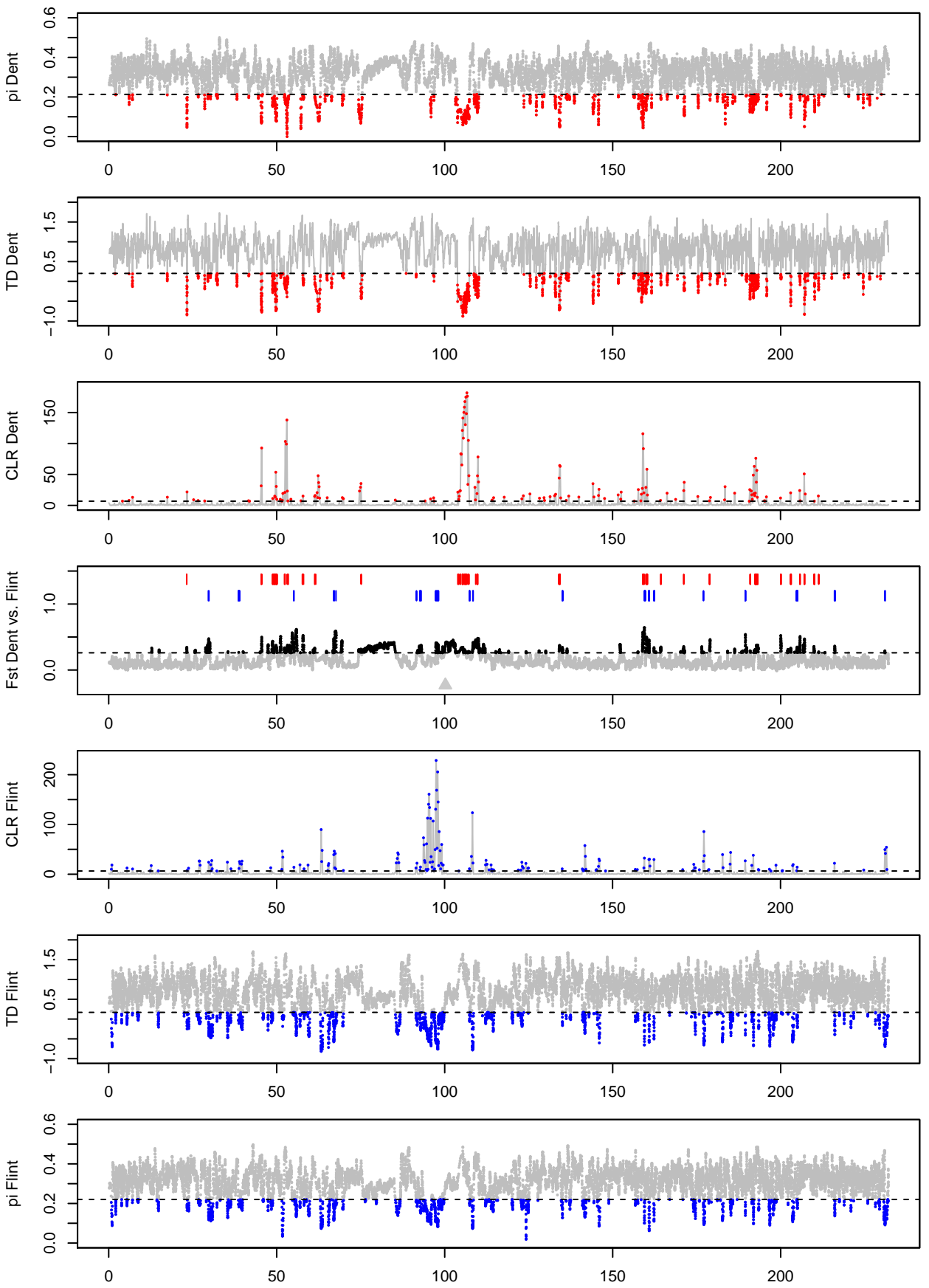


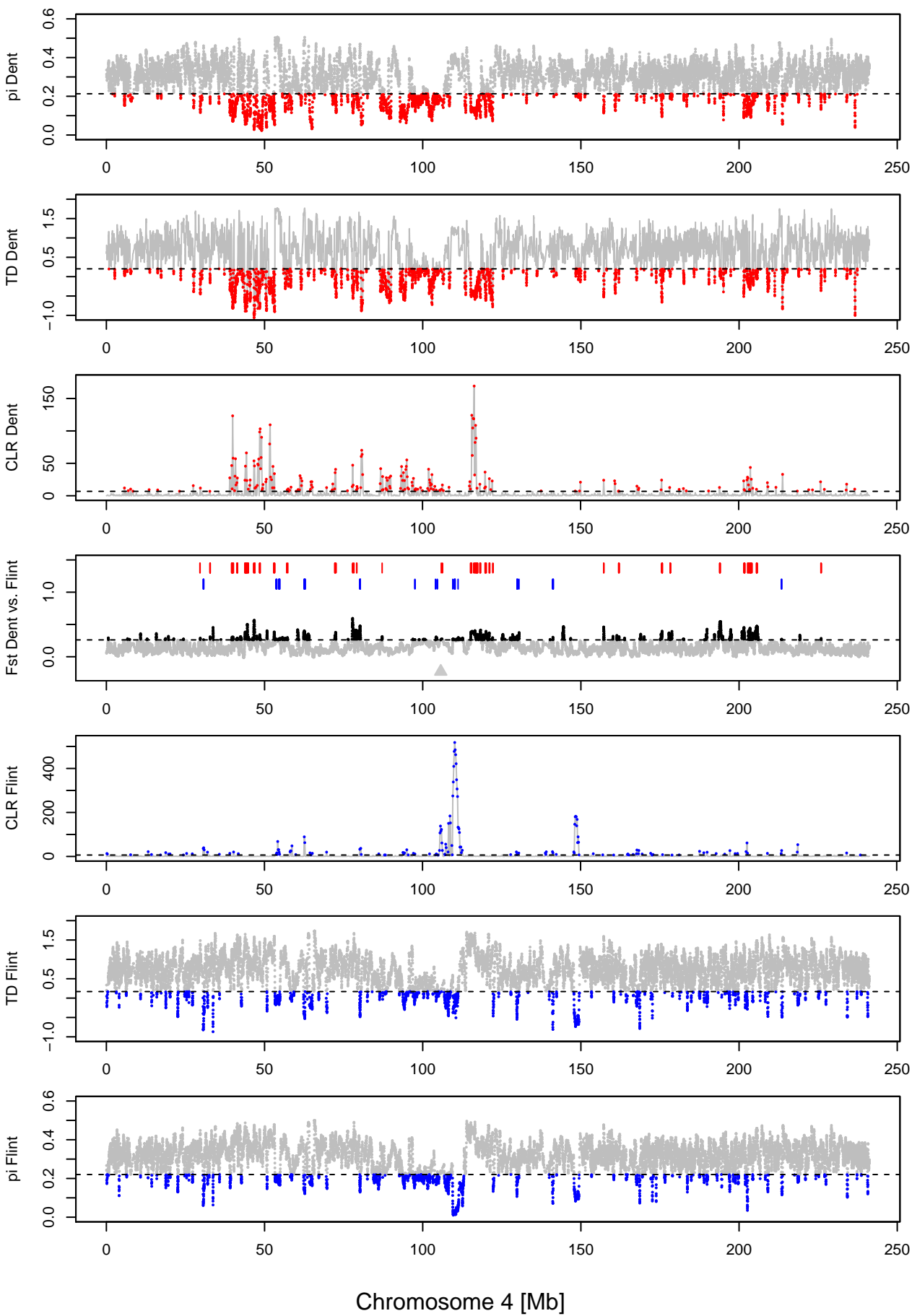
Figure S1: Metrics of the selection screens for 136 temperate inbred lines along the ten maize chromosomes based on genotyping data. Dashed lines indicate the threshold per metric and windows exhibiting values below the respective threshold are shown in red for Dent and in blue for Flint. The positions of candidate genes are highlighted in the corresponding colors in the upper part of the F_{ST} plot with centromere positions shown as grey triangles in the lower part.

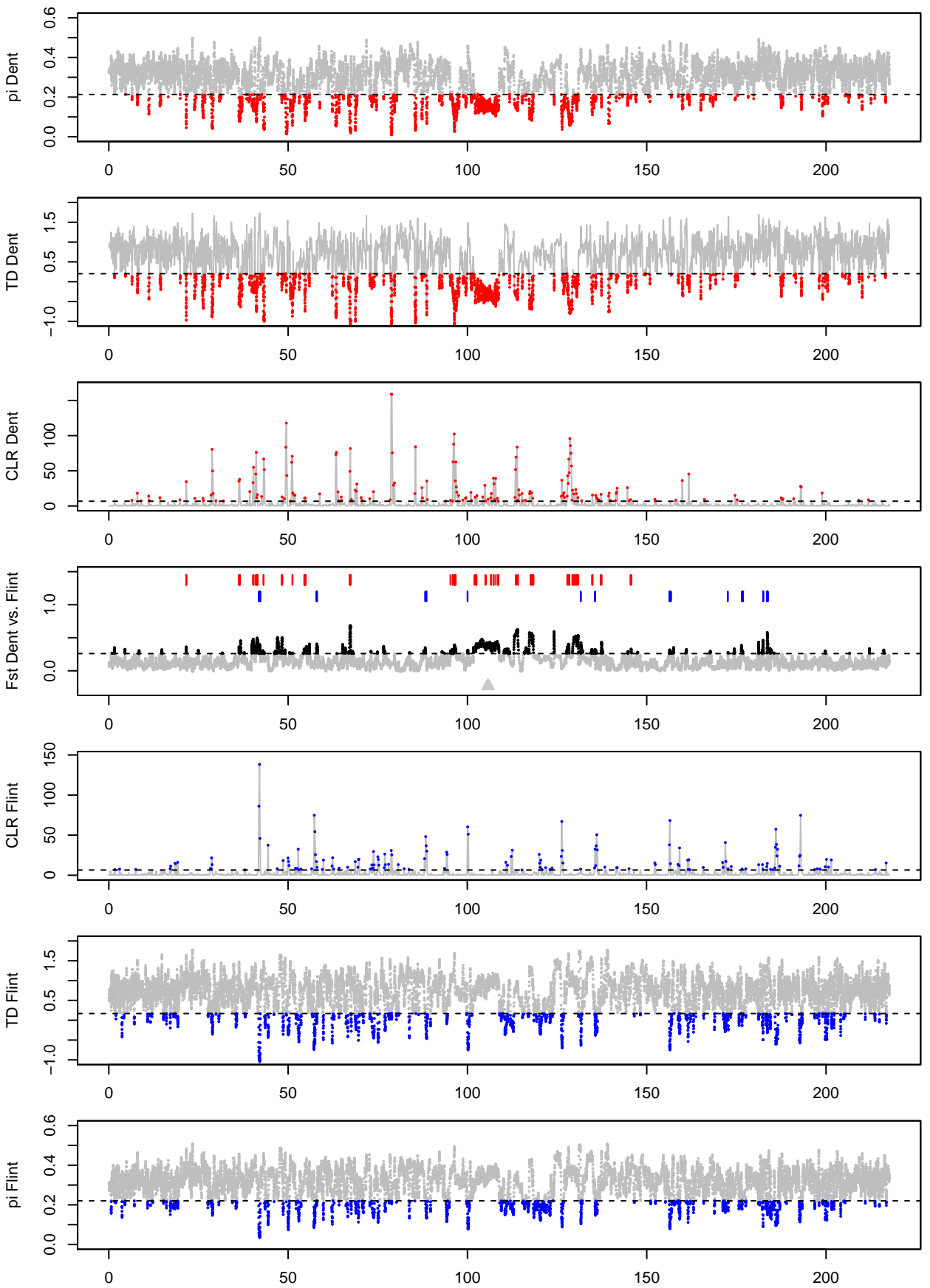




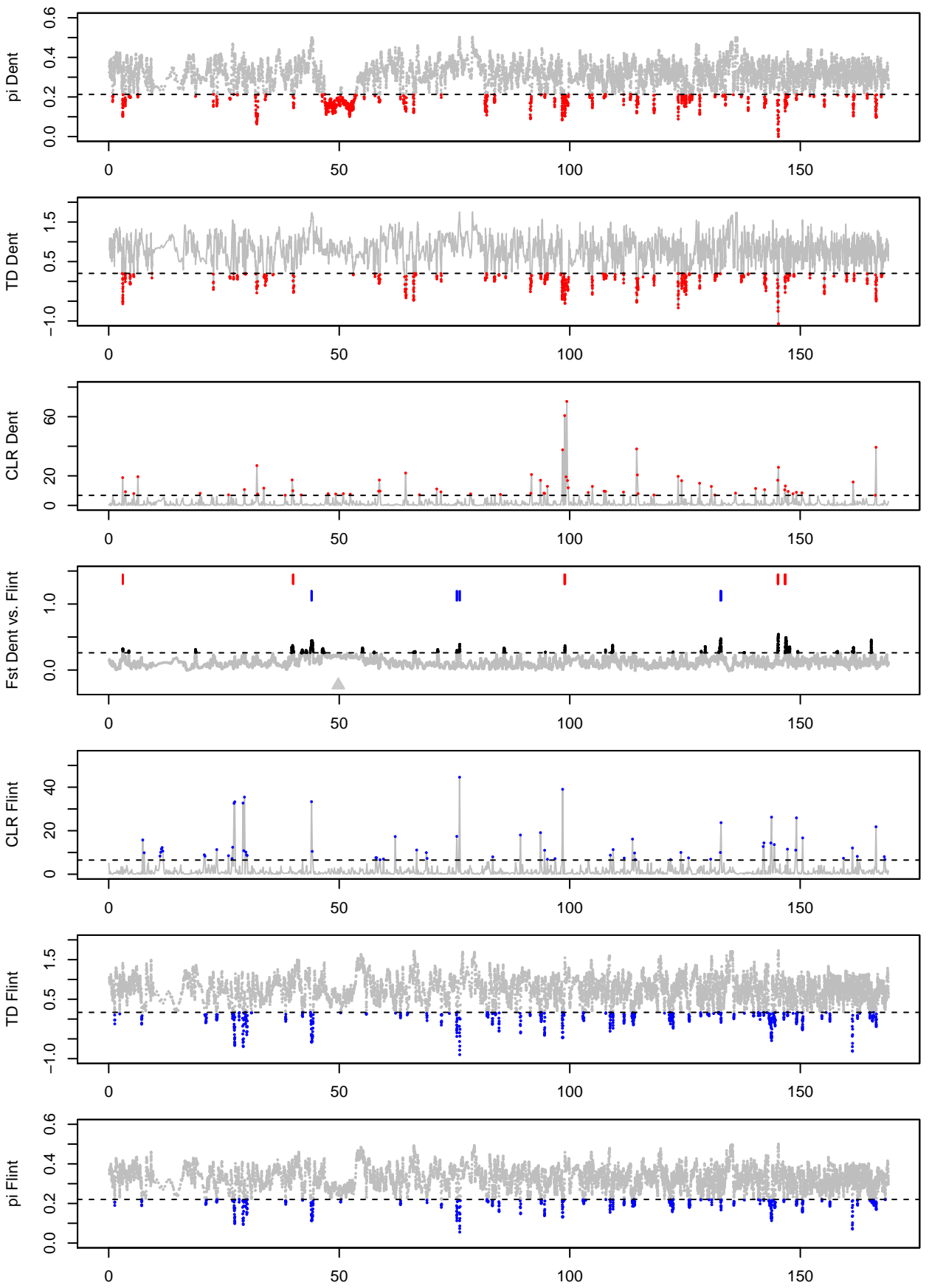


Chromosome 3 [Mb]

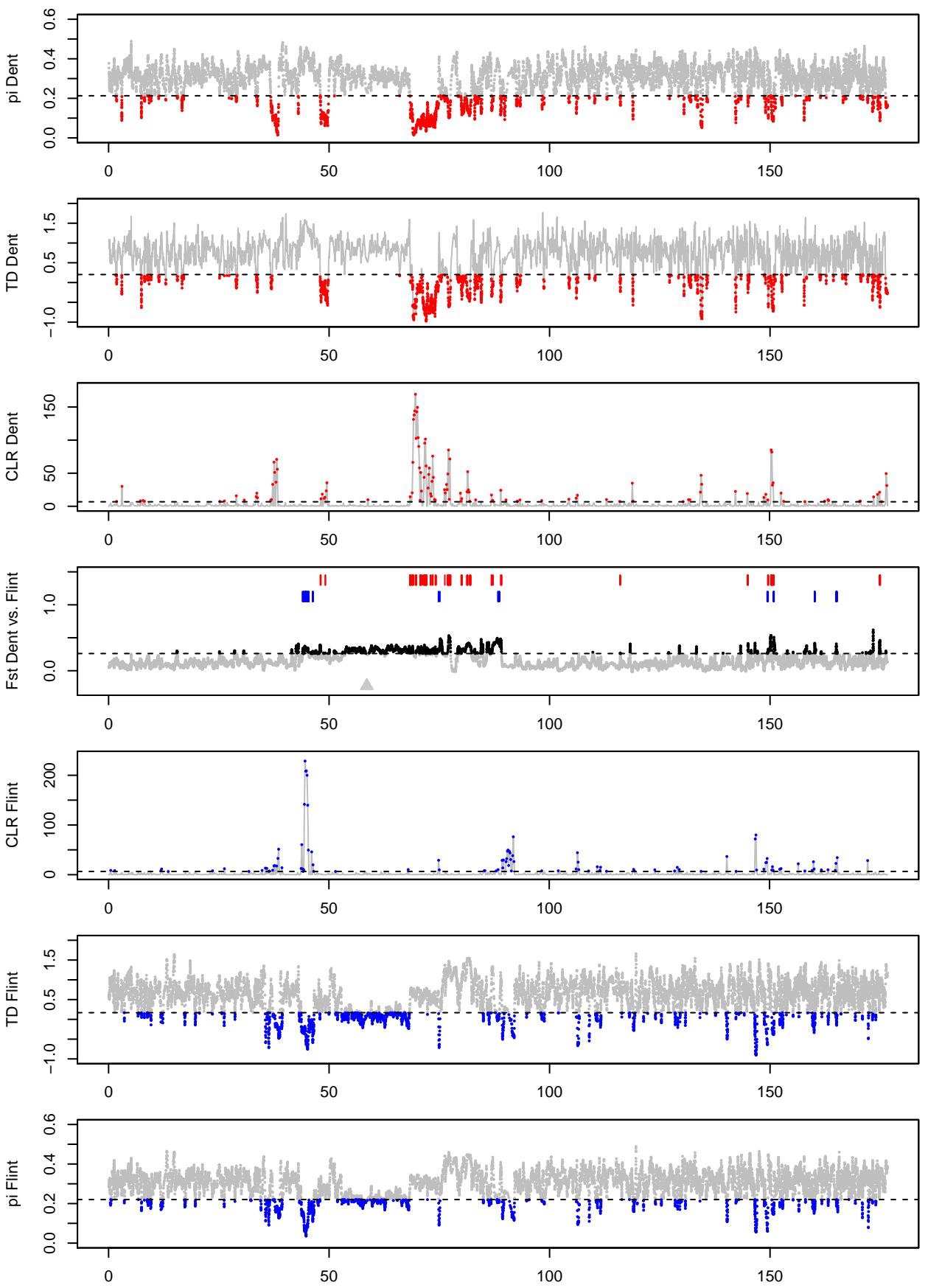




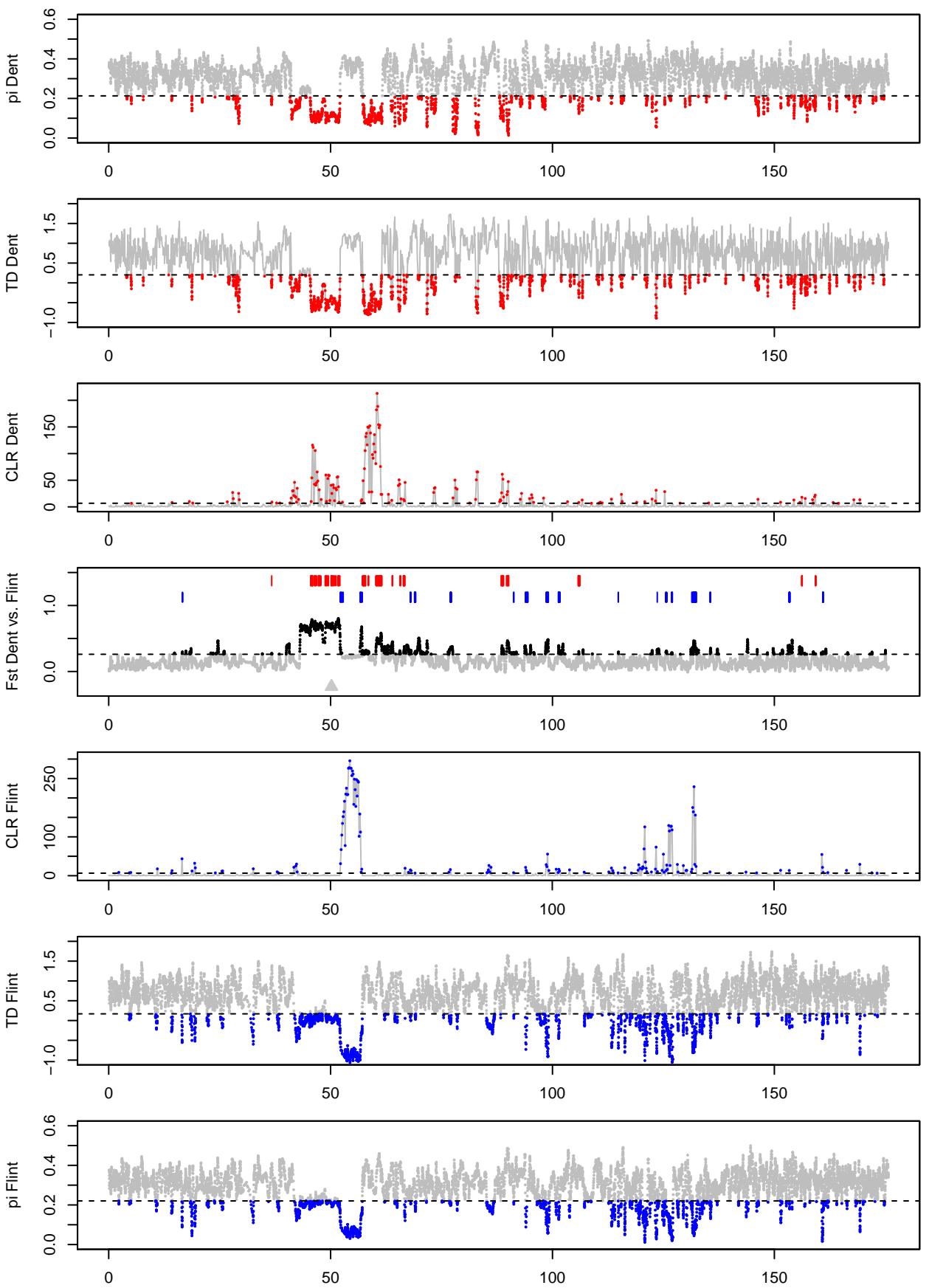
Chromosome 5 [Mb]



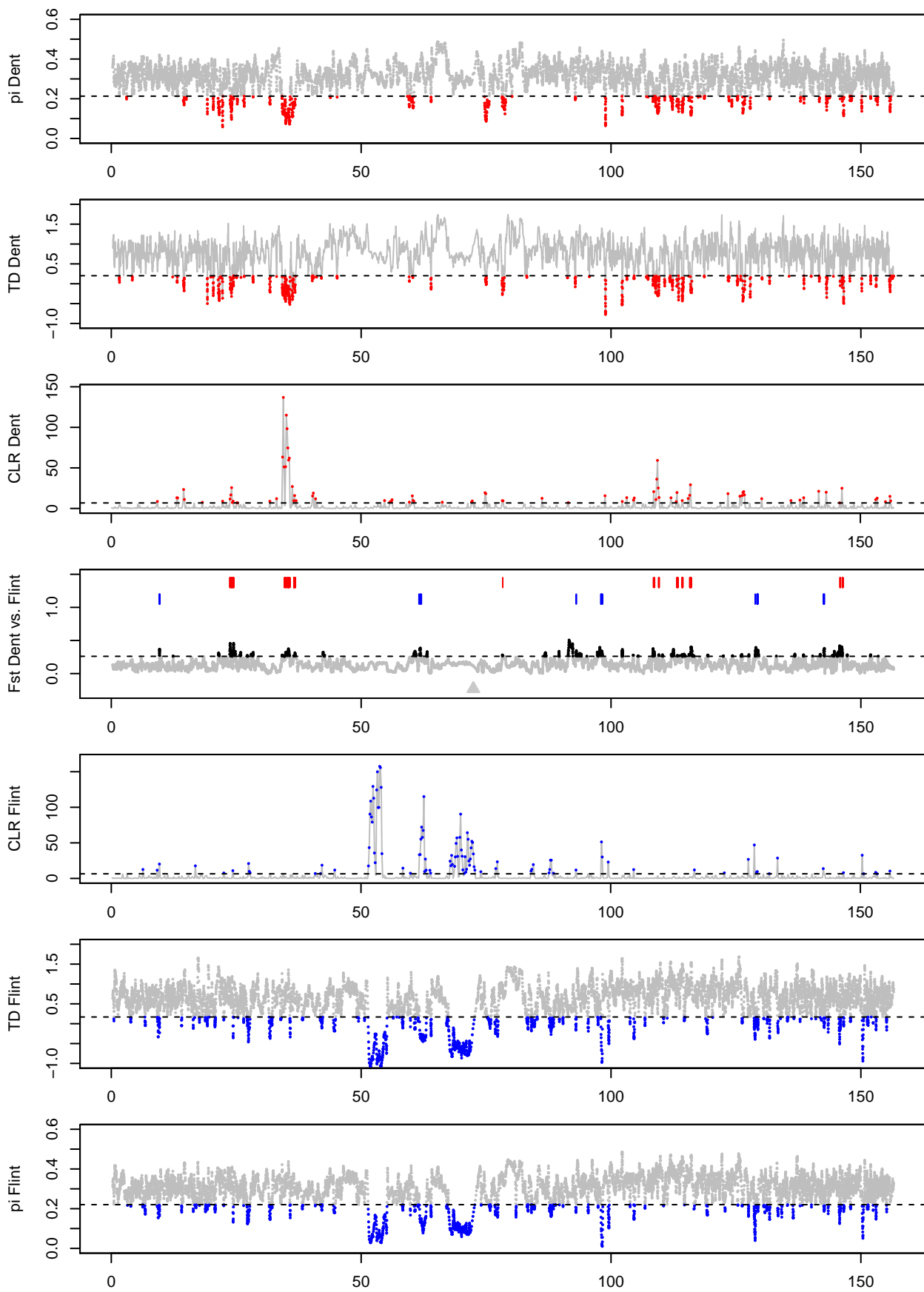
Chromosome 6 [Mb]



Chromosome 7 [Mb]



Chromosome 8 [Mb]



Chromosome 9 [Mb]

