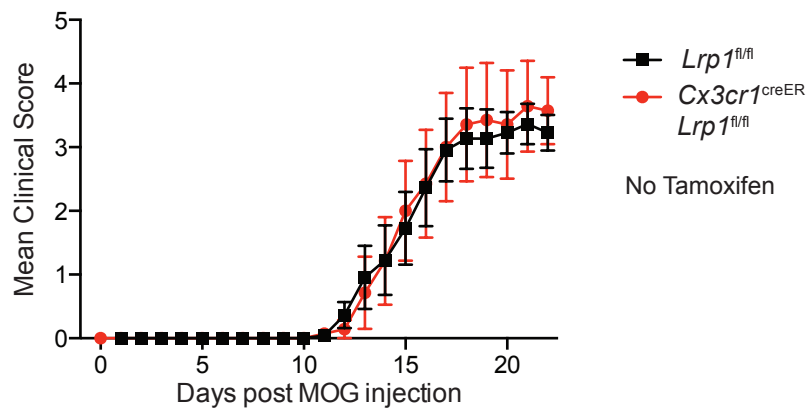
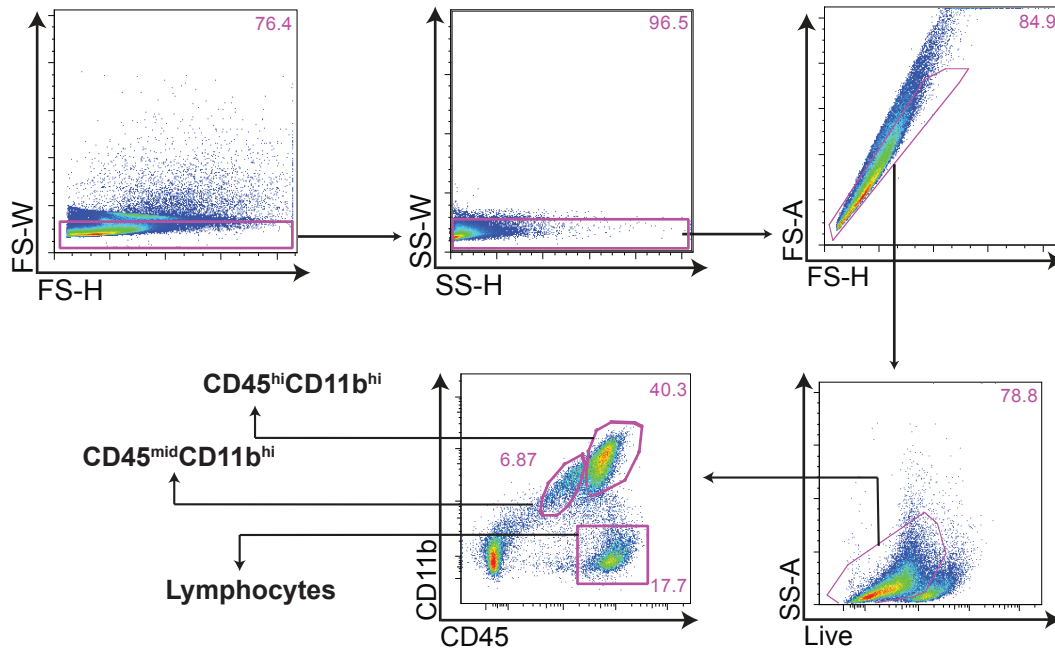


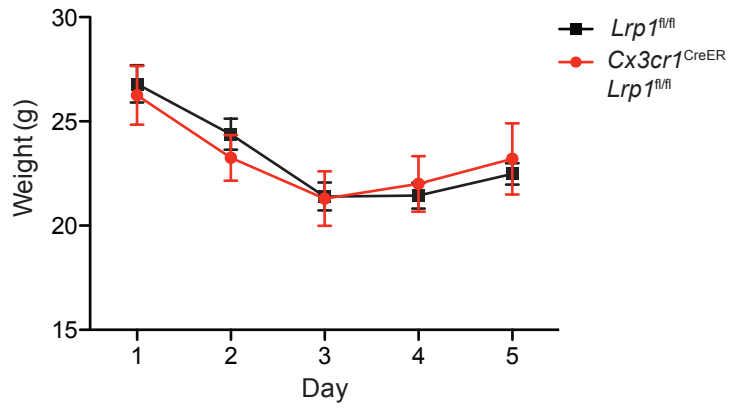
Supplementary Figure 1. Higher dose of mycobacterium does not affect EAE progression in *LysM<sup>cre</sup>-Lrp1<sup>fl/fl</sup>* and *Lrp1<sup>fl/fl</sup>* mice.



Supplementary Figure 2. CX3CR1 haplodeficiency does not affect EAE progression. EAE was induced in *Cx3cr1<sup>creER</sup>-Lrp1<sup>fl/fl</sup>* and *Lrp1<sup>fl/fl</sup>* mice without tamoxifen treatment.



Supplementary Figure 3. Flow cytometry gating strategy to identify macrophages, microglia and lymphocytes (Figures 2 and 3).



Supplementary Figure 4. LRP1 deficiency in microglia does not alter weight loss after LPS treatment. *Cx3cr1<sup>creER</sup>-Lrp1<sup>fl/fl</sup>* and *Lrp1<sup>fl/fl</sup>* mice were injected with LPS (1mg/kg) for 4 consecutive days and the weight of the animals was monitored daily.