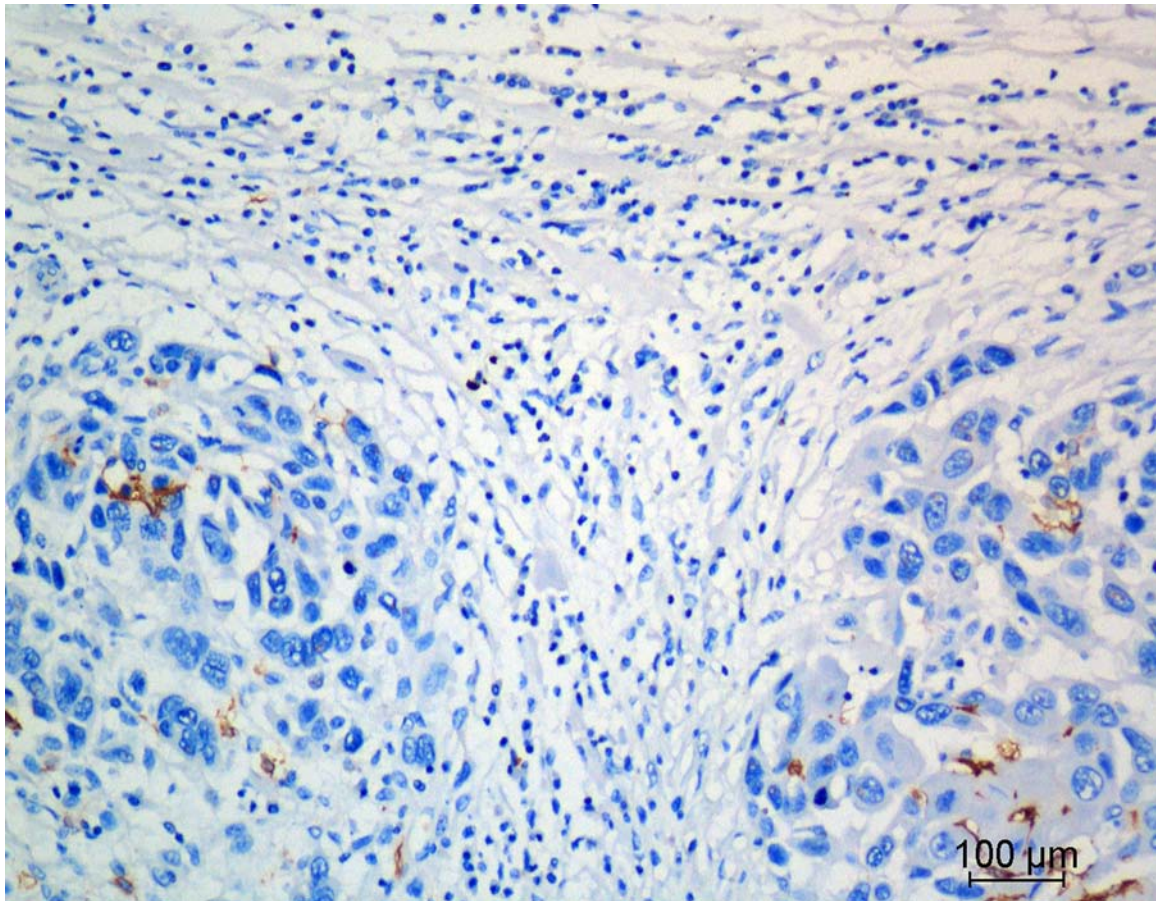


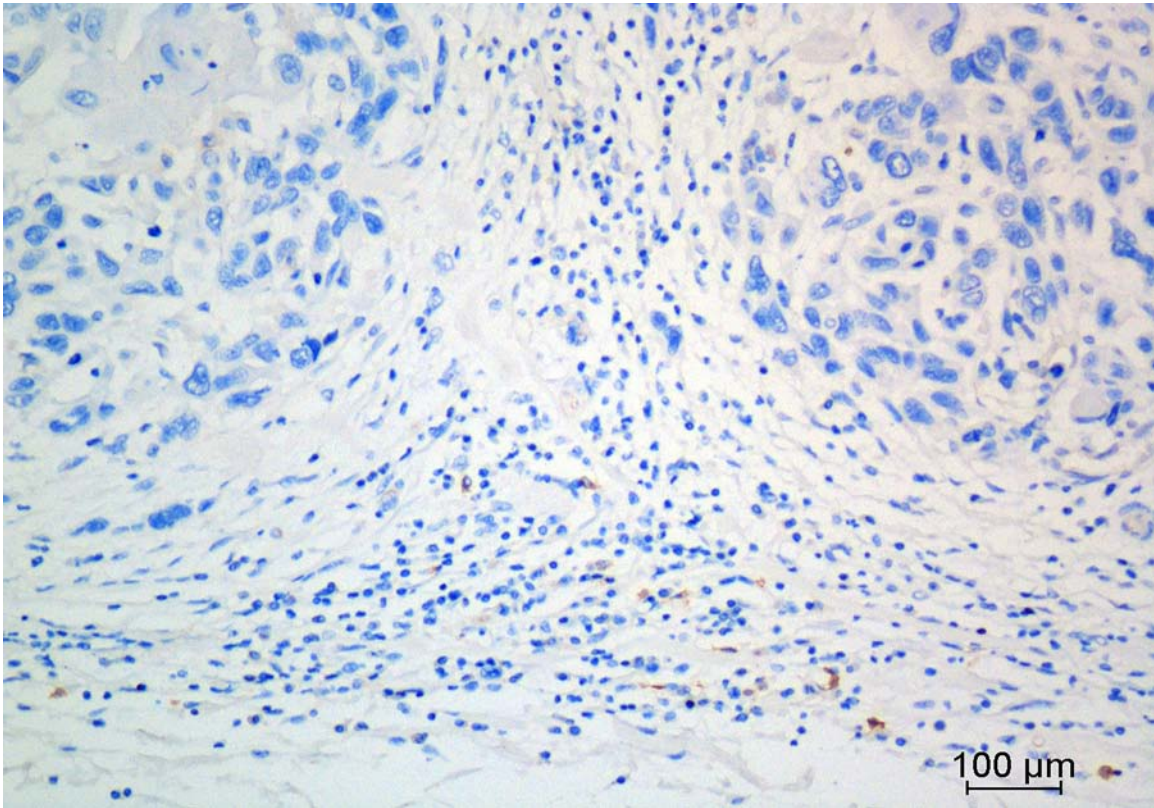
## CD68 and interleukin 13, prospective immune markers for esophageal squamous cell carcinoma prognosis prediction

### Supplementary Materials

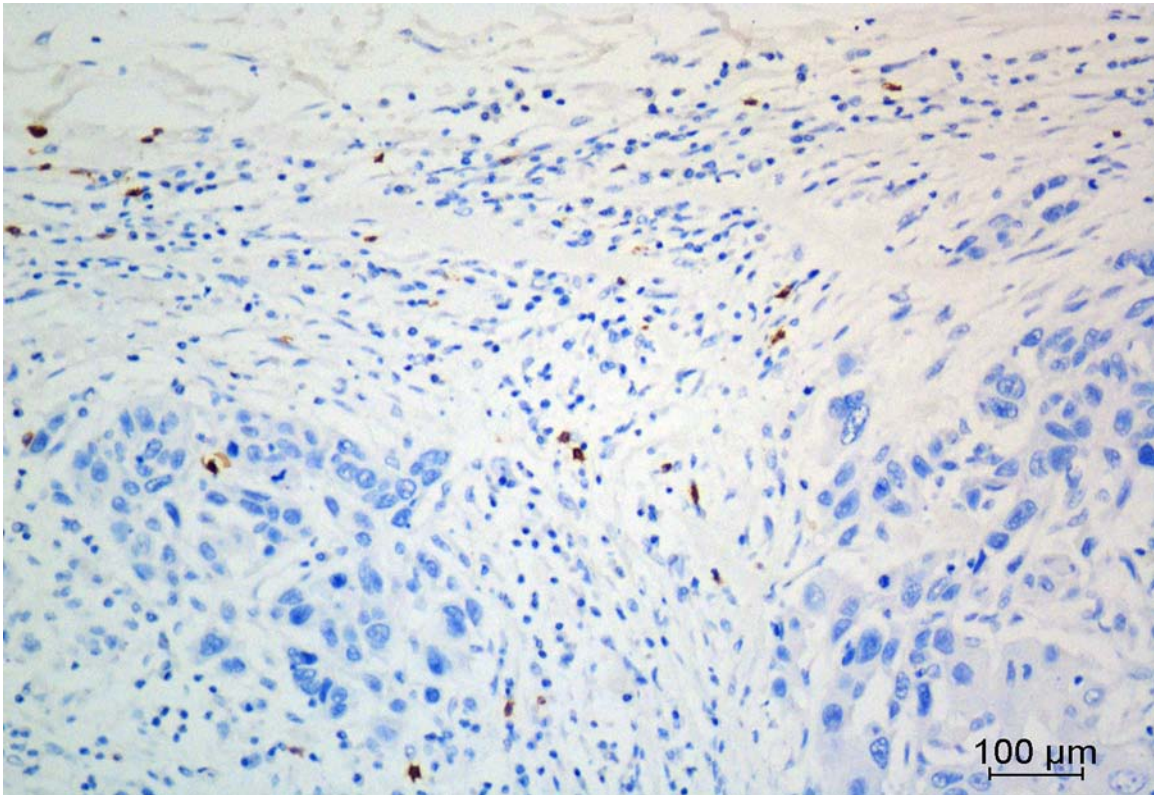


**Supplementary Figure S1: IHC staining of CD1A in ESCC Tissue.** Positive stained cells were demonstrated as brown.



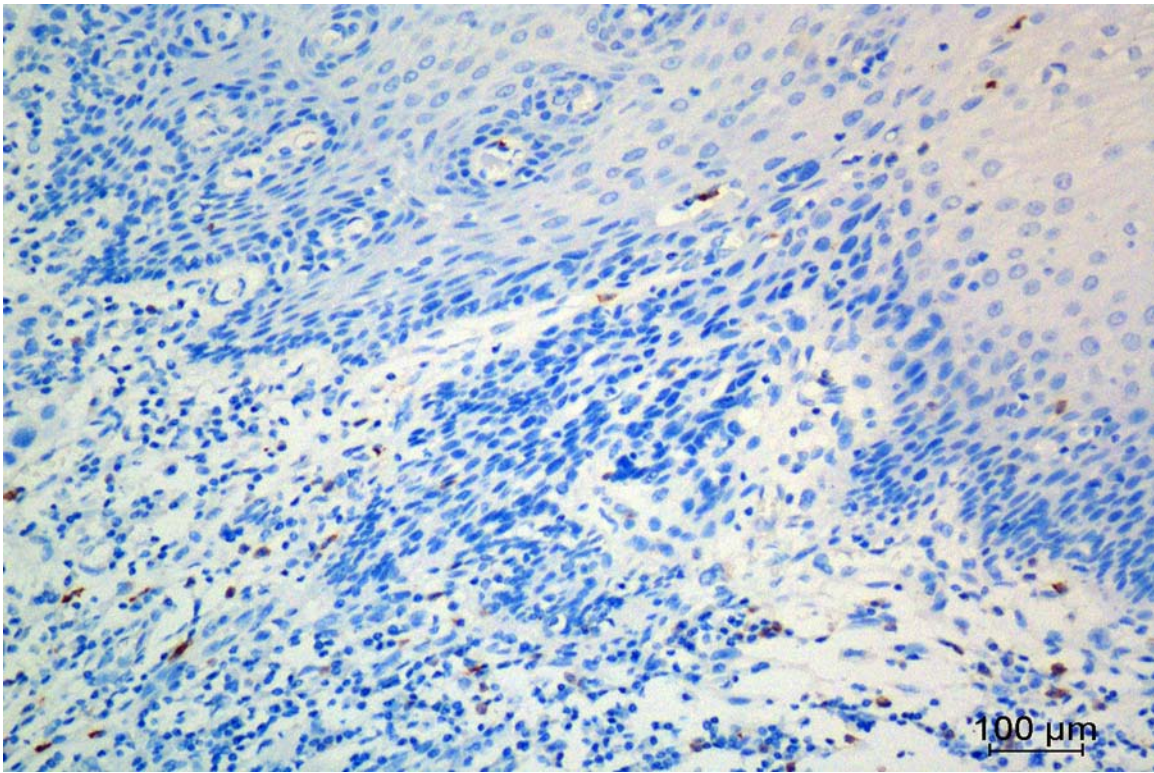


**Supplementary Figure S2: IHC staining of CD123 in ESCC Tissue.** Positive stained cells were demonstrated as brown.

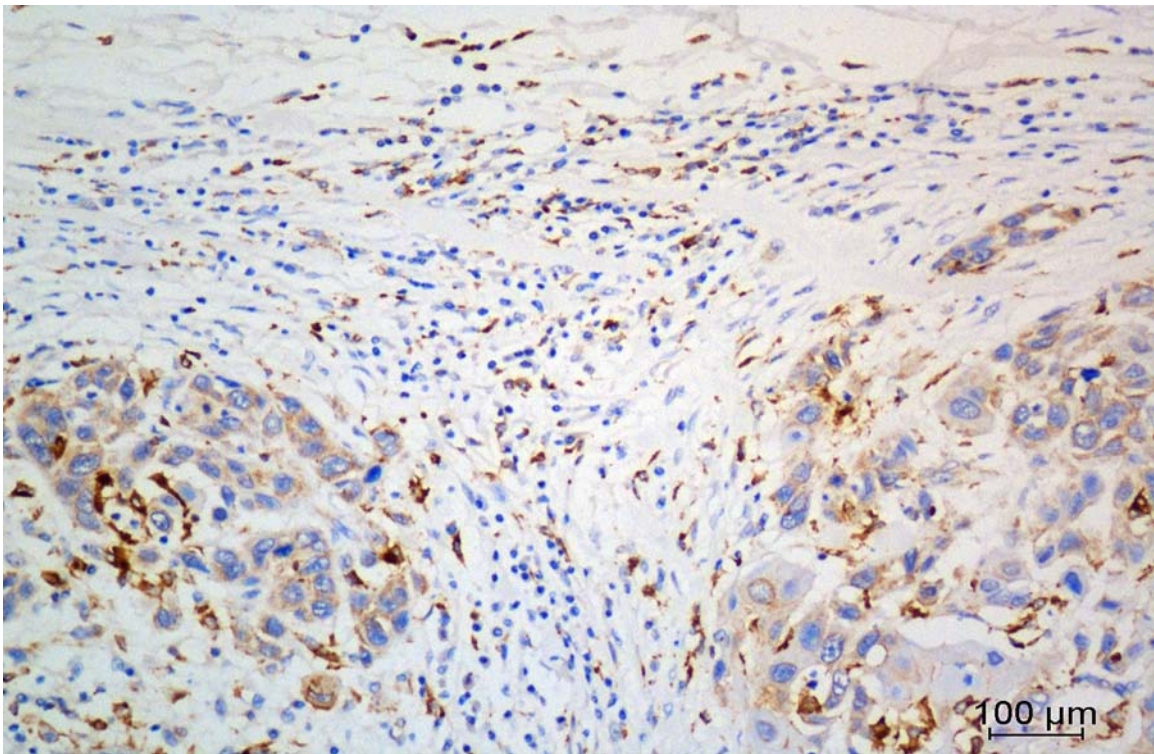


**Supplementary Figure S3: IHC staining of CD57 in ESCC tissue.** Positive stained cells were demonstrated as brown.



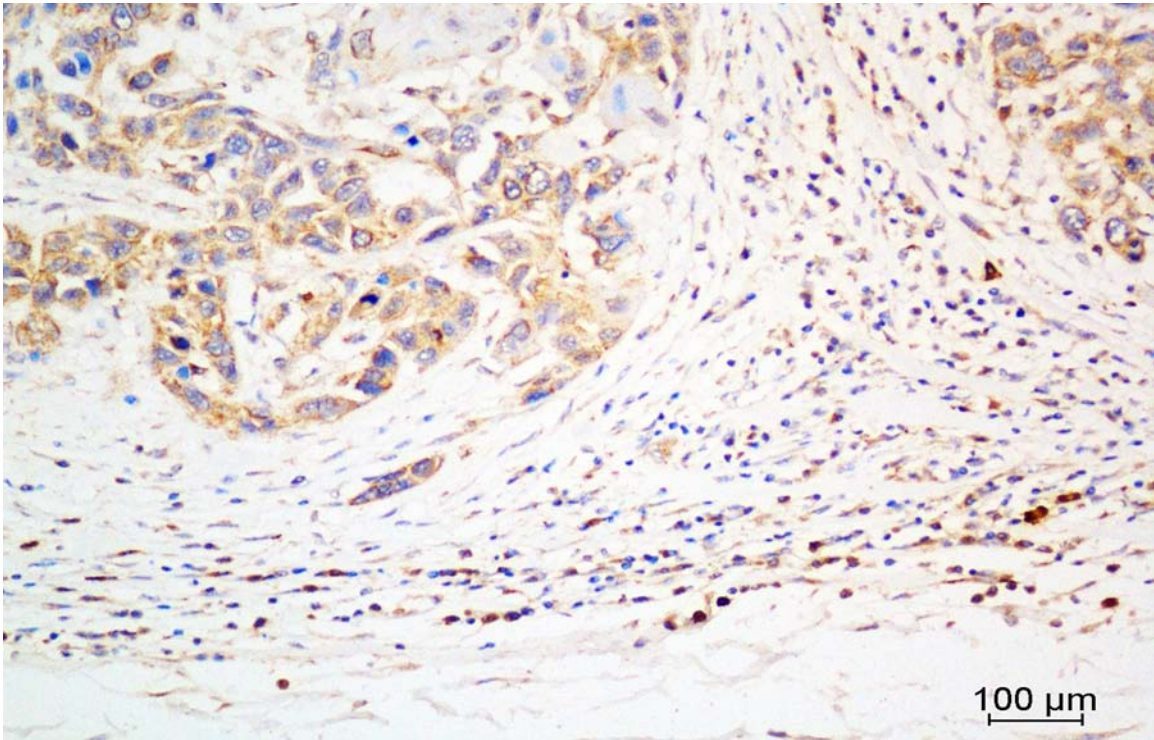


**Supplementary Figure S4: IHC staining of CD66b in ESCC tissue.** Positive stained cells were demonstrated as brown.

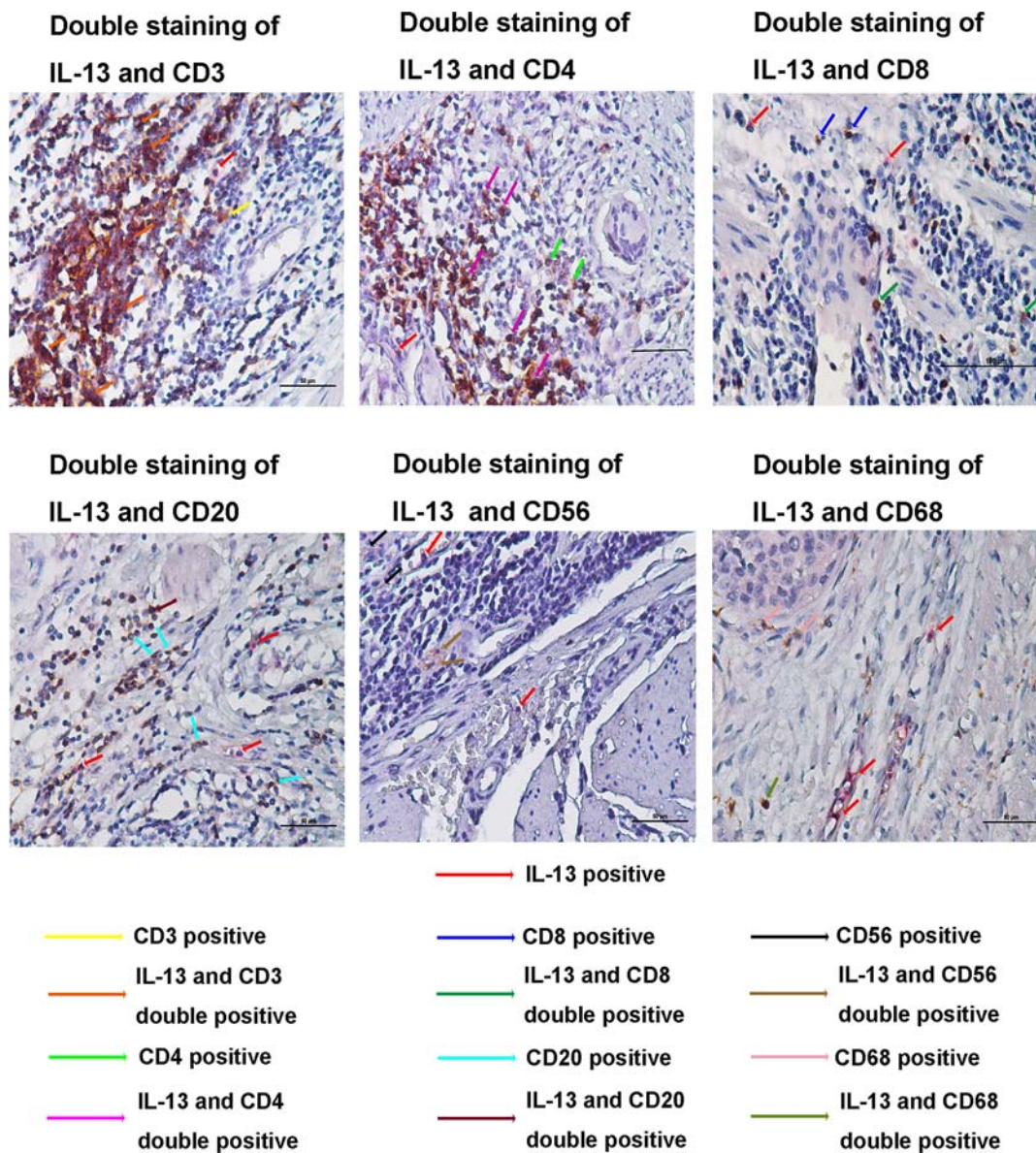


**Supplementary Figure S5: IHC staining of CD68 in ESCC tissue.** Positive stained cells were demonstrated as brown.





**Supplementary Figure S6: IHC Staining of IL-13 in ESCC tissue.** Positive stained cells were demonstrated as brown.



**Supplementary Figure S7: Double IHC staining of IL-13 and indicated markers in ESCC tissue. IL-13 was stained as red and other CD molecular was stained as brown.**