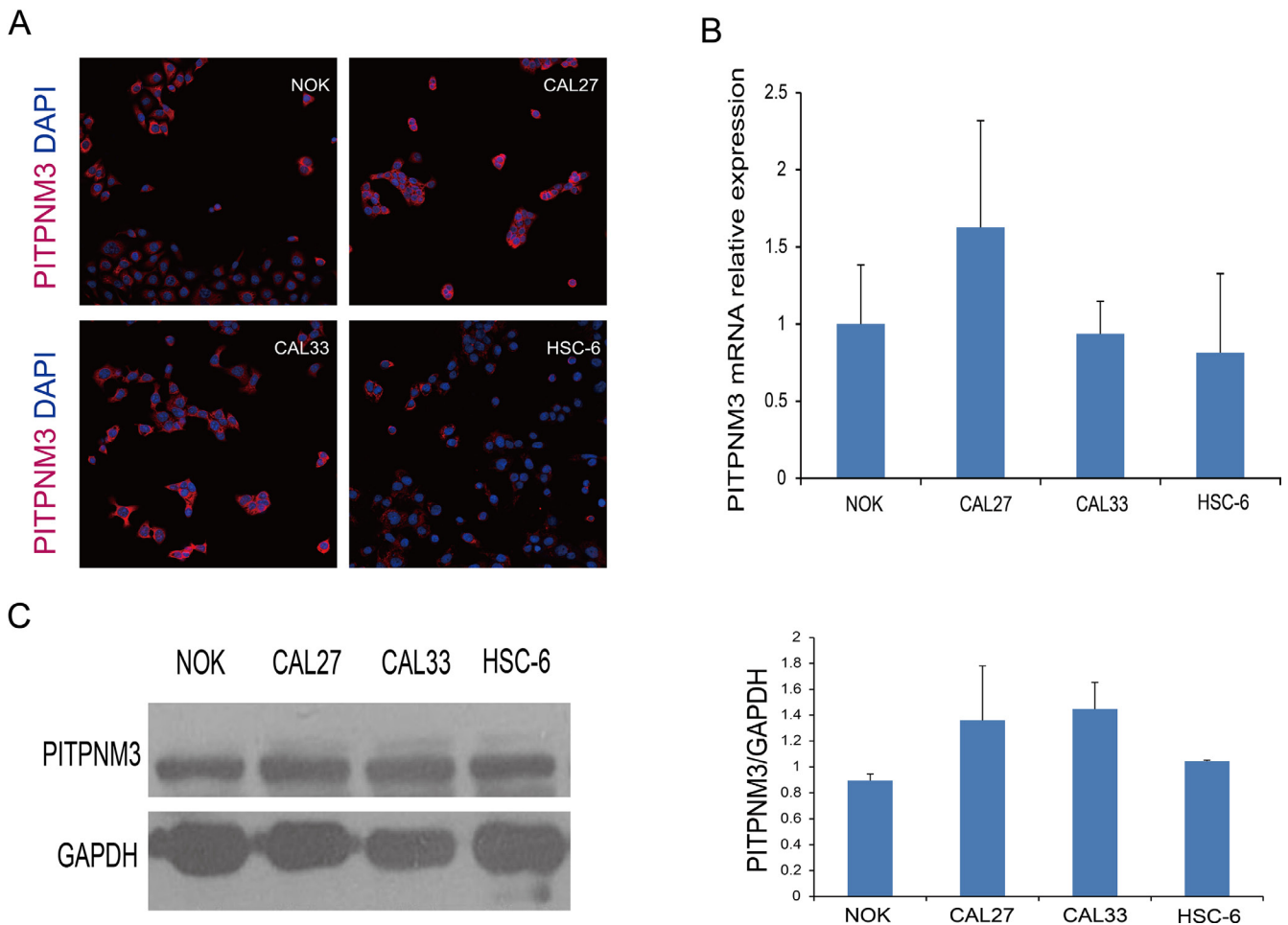
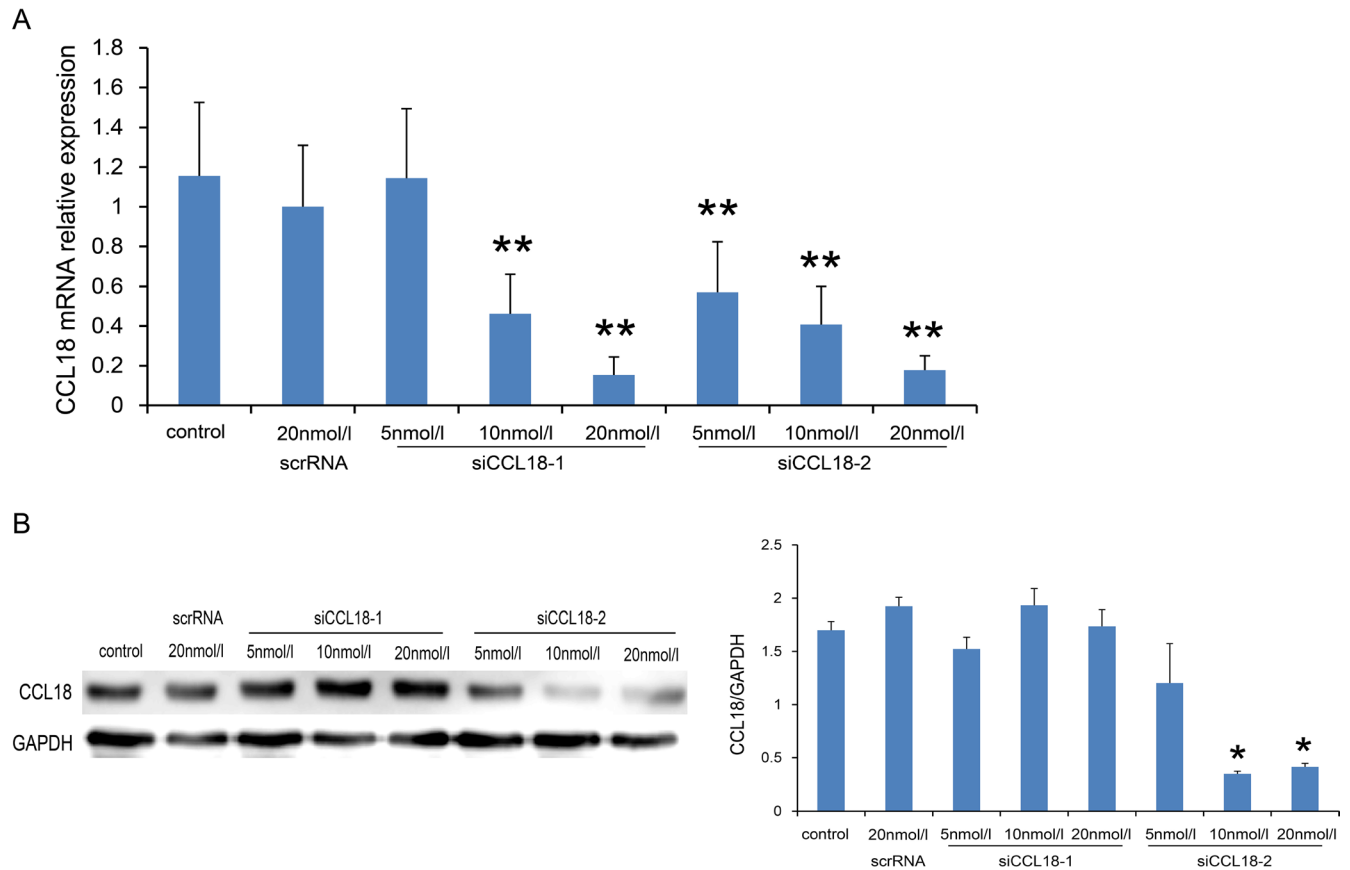


Elevated autocrine chemokine ligand 18 expression promotes oral cancer cell growth and invasion via Akt activation

Supplementary Materials



Supplementary Figure S1: Expression of PITPNM3 in OSCC and NOK cells. (A) Immunofluorescence staining of PITPNM3 (red) in oral cancer cells (HSC-6, CAL33 and CAL27) and NOK cells. Nuclei were counterstained with DAPI (blue). (magnification 50 ×) (B and C) Quantitative PCR and western blotting assays for PITPNM3 in oral cancer cells (HSC-6, CAL33 and CAL27) and NOK cells. Columns represent mean ± SEM of triplicate determinations.



Supplementary Figure S2: Efficiency of CCL18 RNA interference in HSC-6 cells. HSC-6 cells were transfected with siCCL18-1 and siCCL18-2 respectively. After 48 h the cells were harvested. **(A)** Quantitative RT-PCR analysis of CCL18 mRNA levels. **(B)** Western blotting analysis of CCL18 protein levels. Densitometry was used to determine CCL18/GAPDH ratios. Data represent mean \pm SEM of three independent experiments. (* $P < 0.05$ and ** $P < 0.01$ vs. cells transfected with scrRNA).