

Supplementary Information

Molecular cloning and functional characterization of the sex-determination gene *doublesex* in the sexually dimorphic broad-horned beetle *Gnatocerus cornutus* (Coleoptera, Tenebrionidae)

Hiroki Gotoh^{1**}, Mai Ishiguro^{1**}, Hideto Nishikawa¹, Shinichi Morita², Kensuke Okada³, Takahisa Miyatake³, Toshinobu Yaginuma¹ and Teruyuki Niimi^{1, 2, 4*}

1. *Graduate School of Bioagricultural Sciences, Nagoya University, Chikusa, Nagoya 464-8601, Japan*

2. *Division of Evolutionary Developmental Biology, National Institute for Basic Biology, 38, Nishigonaka, Myodaiji, Okazaki 444-8585, Japan*

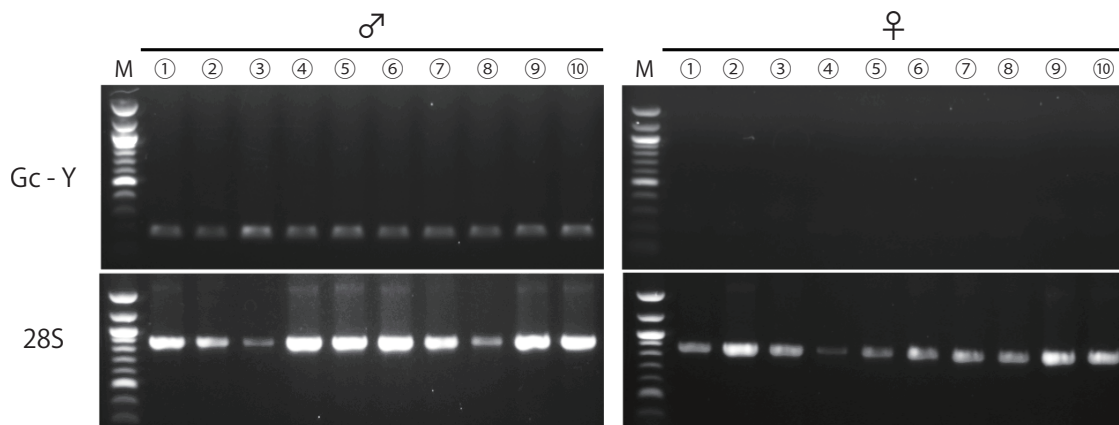
3. *Graduate School of Environmental and Life Science, Okayama University, Okayama 700-8530, Japan*

4. *Department of Basic Biology, School of Life Science, SOKENDAI (The Graduate University for Advanced Studies), 38 Nishigonaka, Myodaiji, Okazaki 444-8585, Japan*

*Corresponding author. Division of Evolutionary Developmental Biology, National Institute for Basic Biology, 38, Nishigonaka, Myodaiji, Okazaki 444-8585, Japan. Tel.: +81-564-55-7606; fax: +81-564-55-7607.

E-mail address: niimi@nibb.ac.jp (T. Niimi).

** Contributed equally



Supplementary Figure 1S. PCR-based sexing of *G. cornutus*

PCR amplification patterns of genomic DNA from ten males (left panels) and ten females (right panels) using newly developed primer pair Gc-Y. 28S rRNA gene sequence was used as positive control. M indicates 100 bp DNA ladder size marker.