

## **Supplementary Information**

### **A possible link between loading, inflammation and healing: Immune cell populations during tendon healing in the rat**

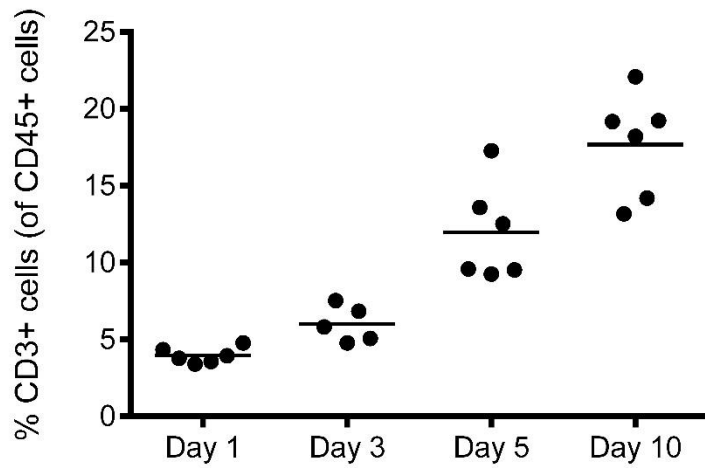
**Parmis Blomgran<sup>1</sup>, Robert Blomgran<sup>2</sup>, Jan Ernerudh<sup>3</sup> and Per Aspenberg<sup>1</sup>**

<sup>1</sup> Orthopaedics, <sup>2</sup> Division of Medical Microbiology, <sup>3</sup> Division of Clinical Immunology  
Department of Clinical and Experimental Medicine, Linköping University, Sweden

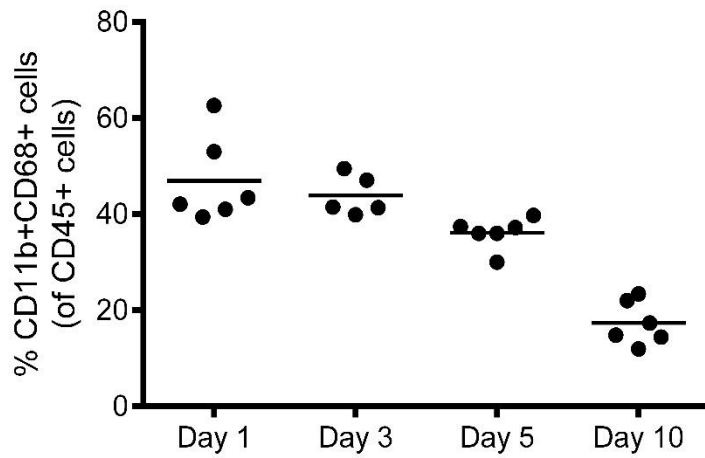
**Corresponding Author:** [parmis.blomgran@gmail.com](mailto:parmis.blomgran@gmail.com)

“Supplementary Table S1”. Cell surface markers used.

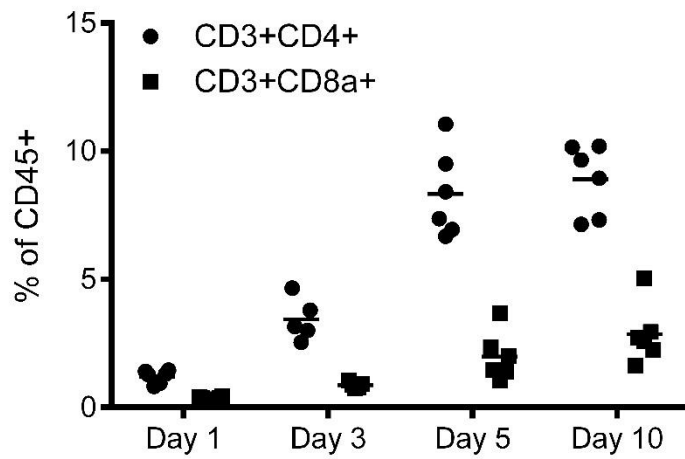
| <b>Marker</b> | <b>Cell type</b>  | <b>Company</b> |
|---------------|---|----------------|
| CD45          | Pan-leukocyte   | Biolegend      |
| CD11b         | Phagocyte   | AbD serotec    |
| CD68          | Pan-macrophage  | AbD serotec    |
| CCR7          | M1 macrophage   | Bioss          |
| CD163         | M2 macrophage   | LSBio          |
| CD206         | M2 macrophage   | Bioss          |
| CD3           | T cell  | Biolegend      |
| CD4           | T helper cell   | Biolegend      |
| CD25          | Regulatory T cell<br><br>(In combination<br>with Foxp3) | Biolegend      |
| Foxp3         | Regulatory T cell                                       | Biolegend      |
| CD8a          | Cytotoxic T cell  | Biolegend      |



**Supplementary Figure S1.** The proportion of T cells (CD3<sup>+</sup>) in the healing tissue presented as percent of all leukocytes (CD45<sup>+</sup>) over time in the fully loaded group.



**Supplementary Figure S2.** The proportion of macrophages (CD11b<sup>+</sup>CD68<sup>+</sup>) in the healing tissue presented as percent of all leukocytes (CD45<sup>+</sup>) over time in the fully loaded group.



**Supplementary Figure S3.** The proportion of T helper ( $CD3^+CD4^+$ ) and cytotoxic T cells ( $CD3^+CD8a^+$ ) in the healing tissue presented as percent of all leukocytes ( $CD45^+$ ) over time in the fully loaded group.