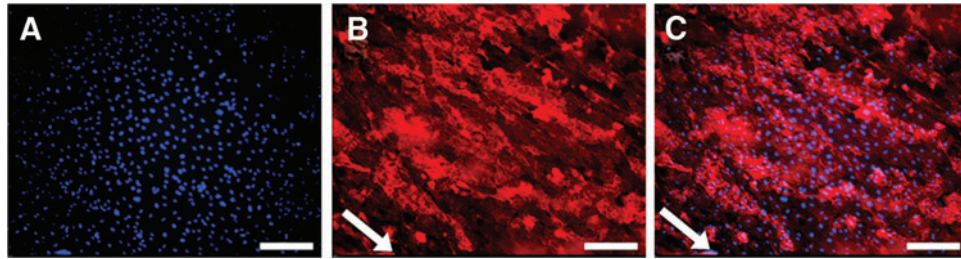


Supplementary Data



SUPPLEMENTARY FIG. S1. Fluorescent image of CD31 expression of HUVECs grown and culture in TEIL with PLA nanofibers as the basement membrane. (A) DAPI (nucleus, *blue*), (B) CD31 (HUVEC marker, *red*), (C) overlay image of A and B. The *arrows* indicate the alignment direction in nanofiber. Scale bar = 200 μm . HUVEC, human umbilical vein endothelial cell; TEIL, tissue-engineered intimal layer.