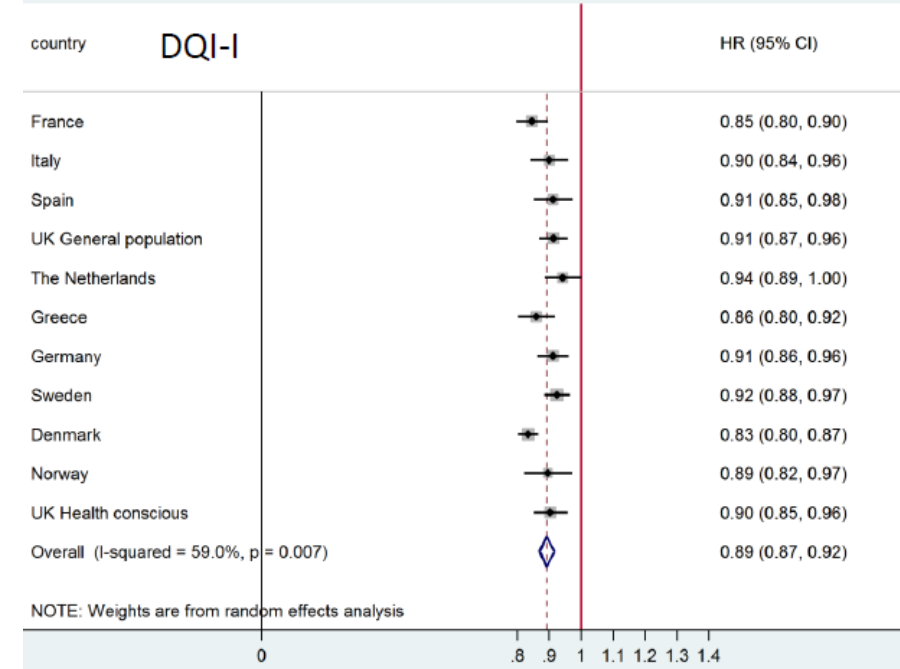
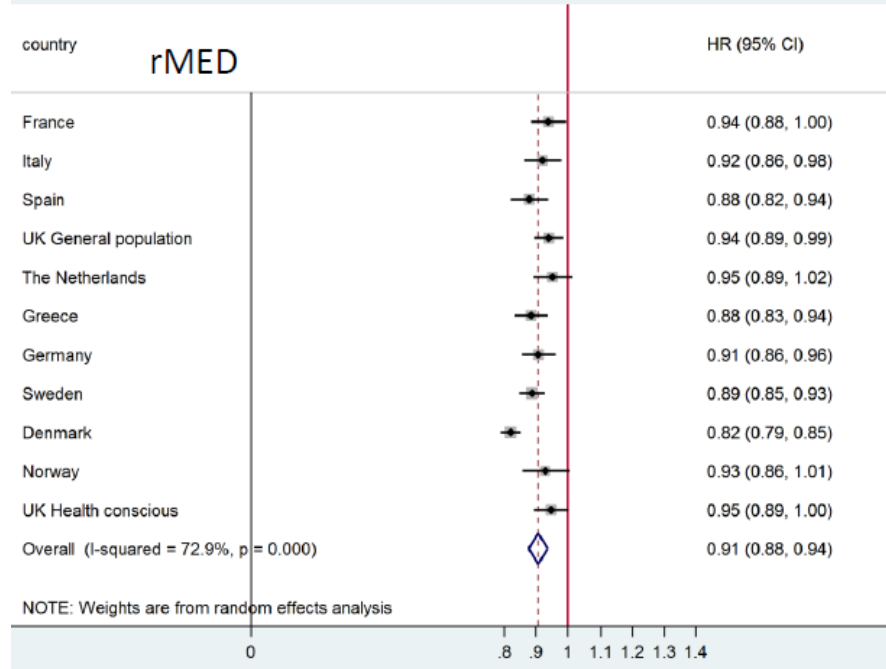
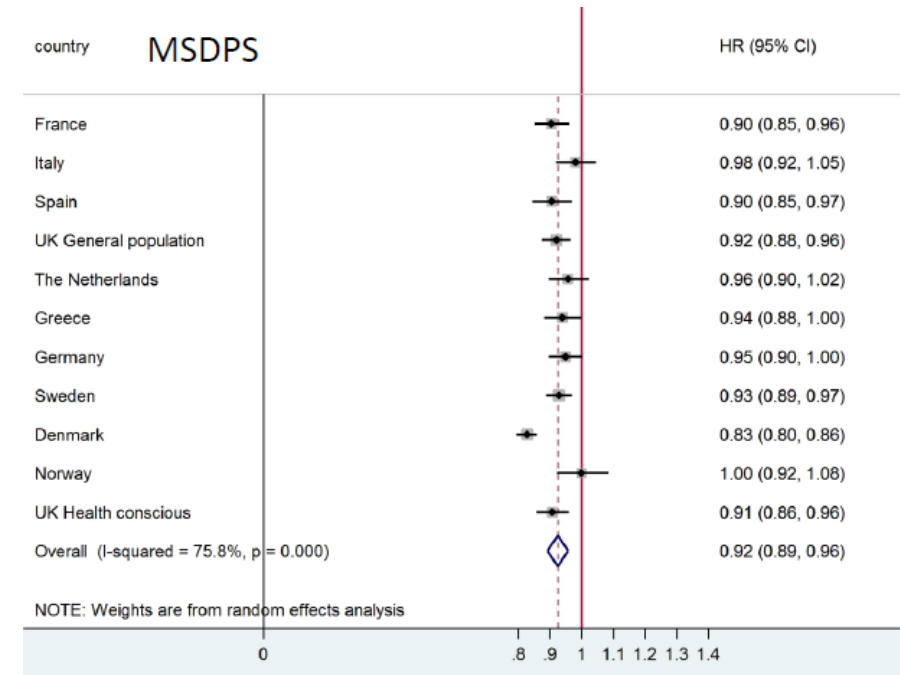
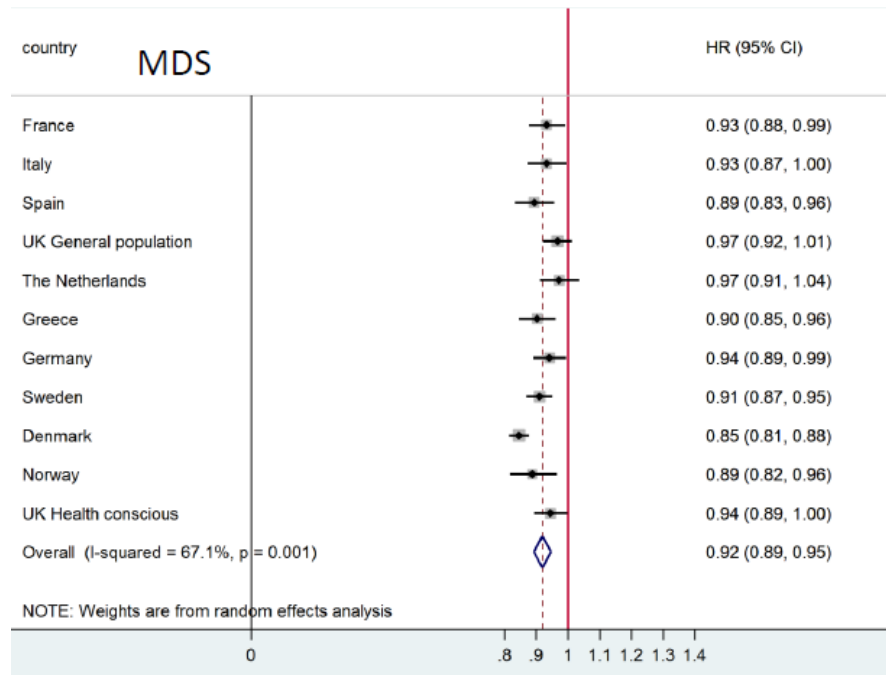
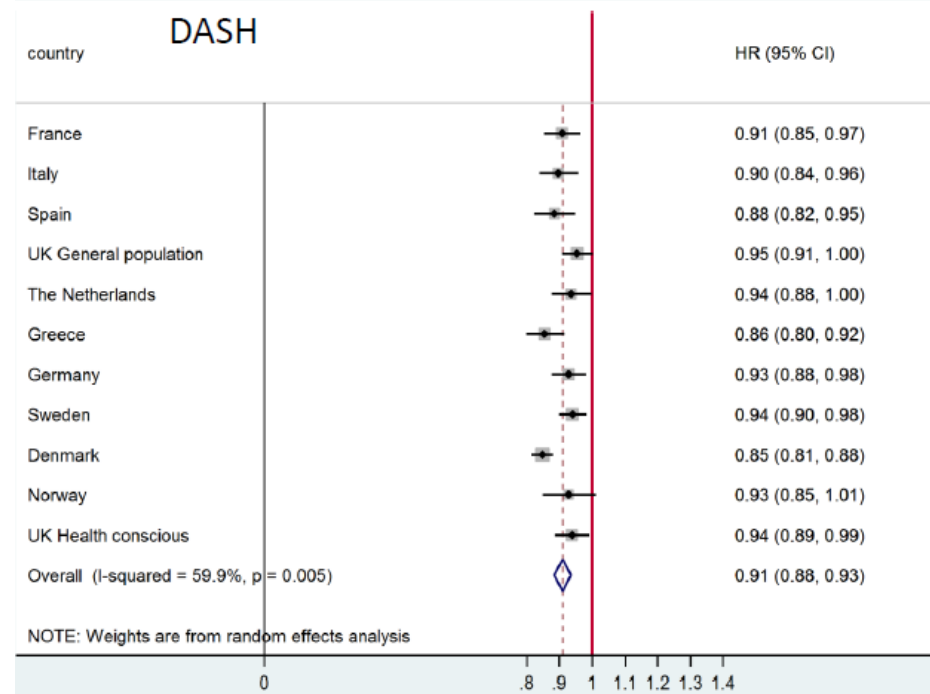
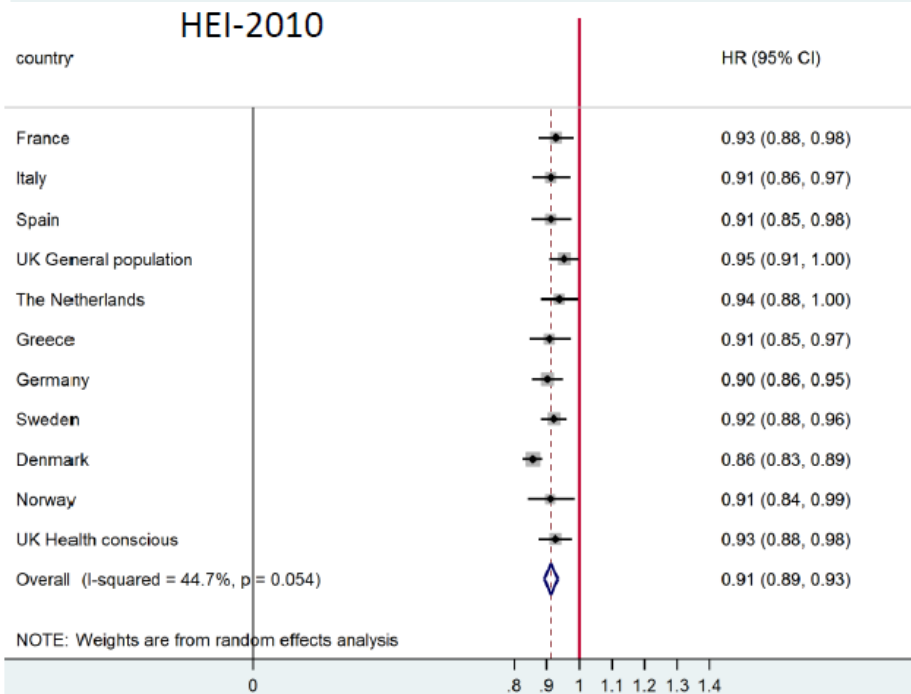
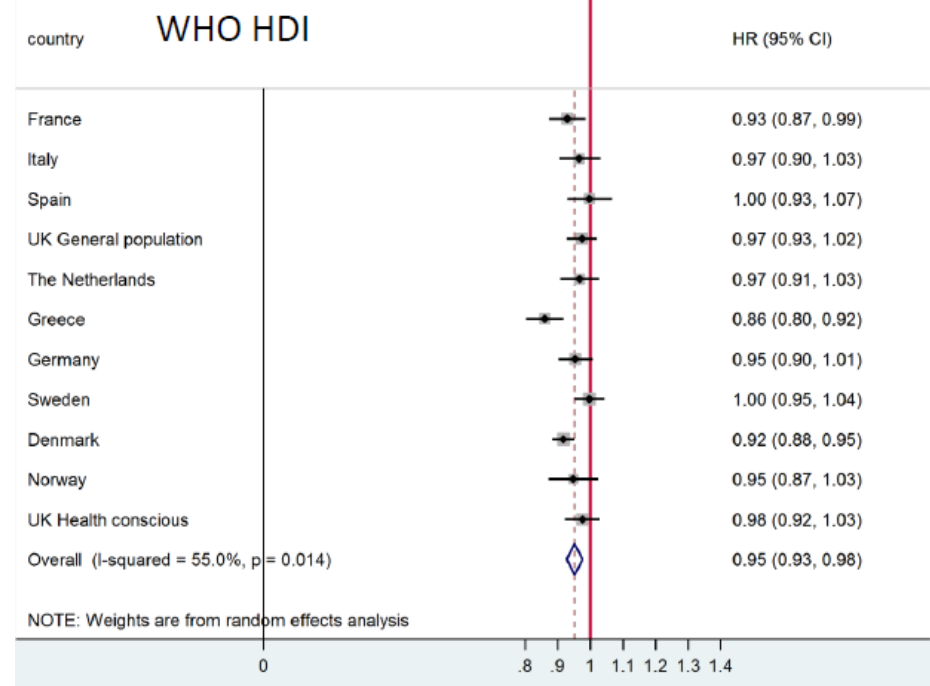
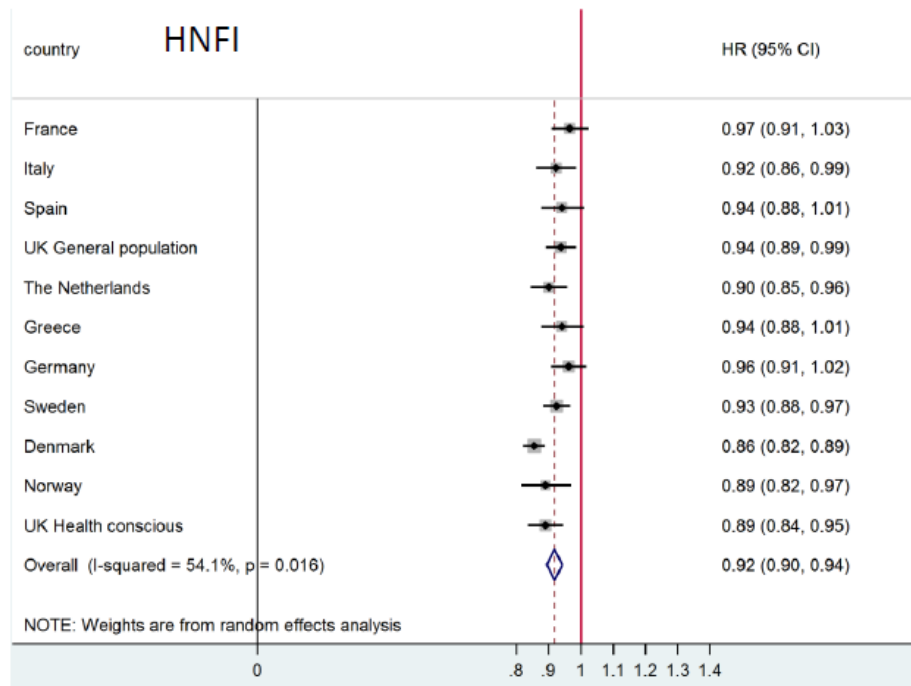
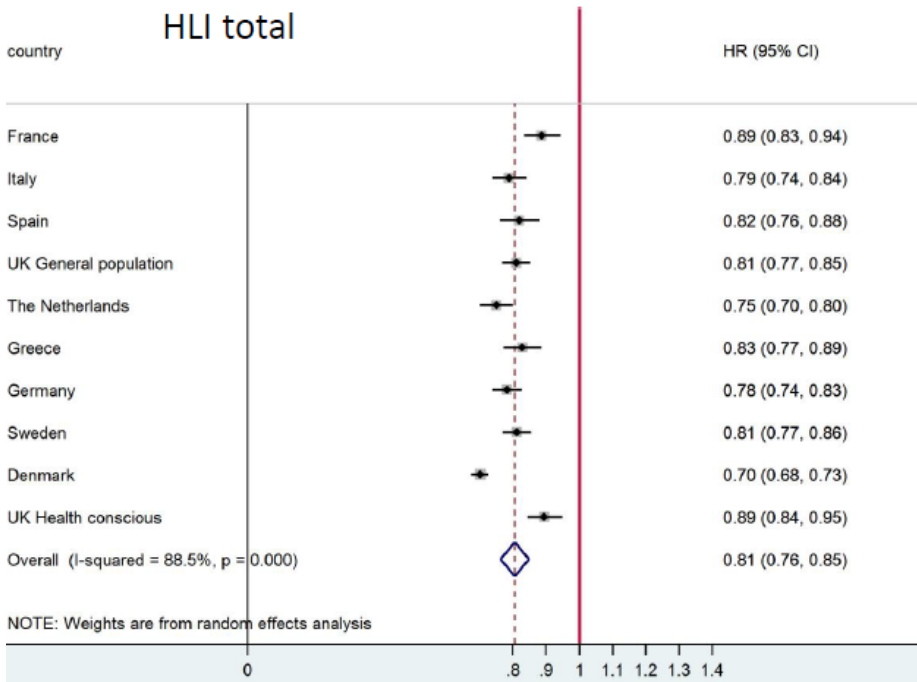
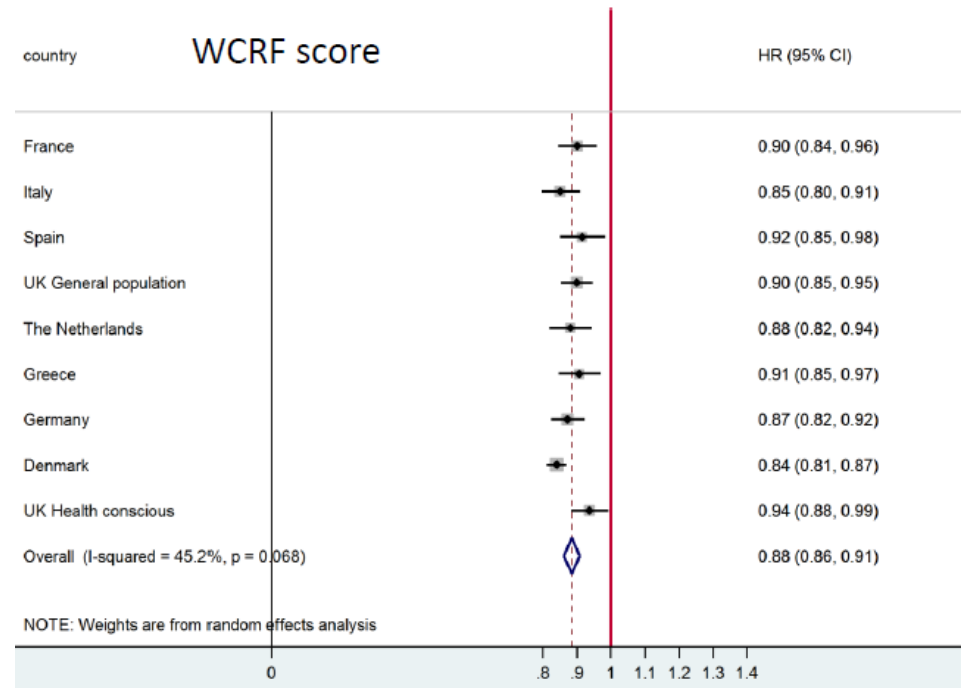
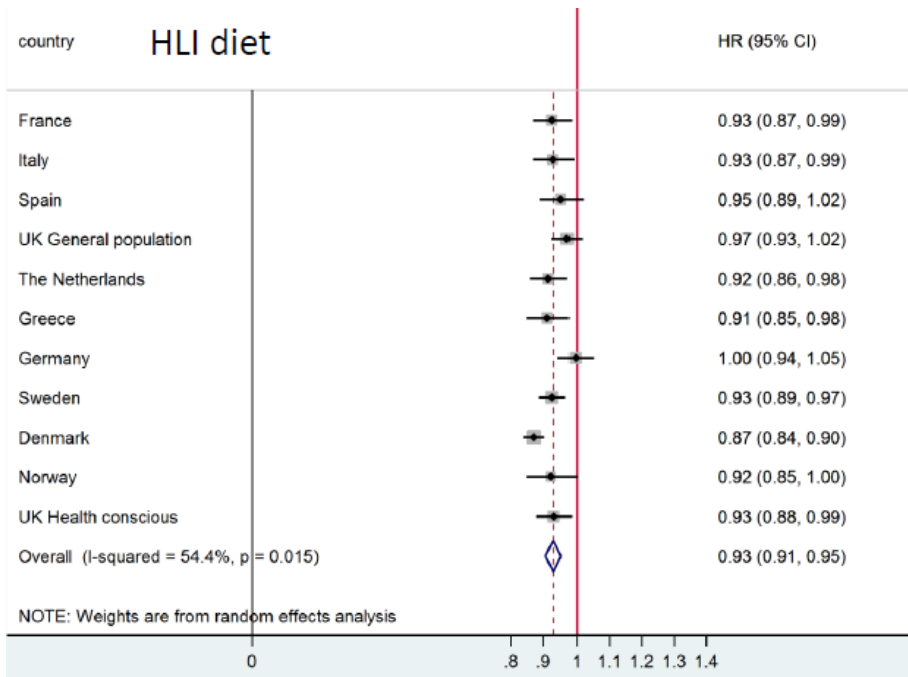


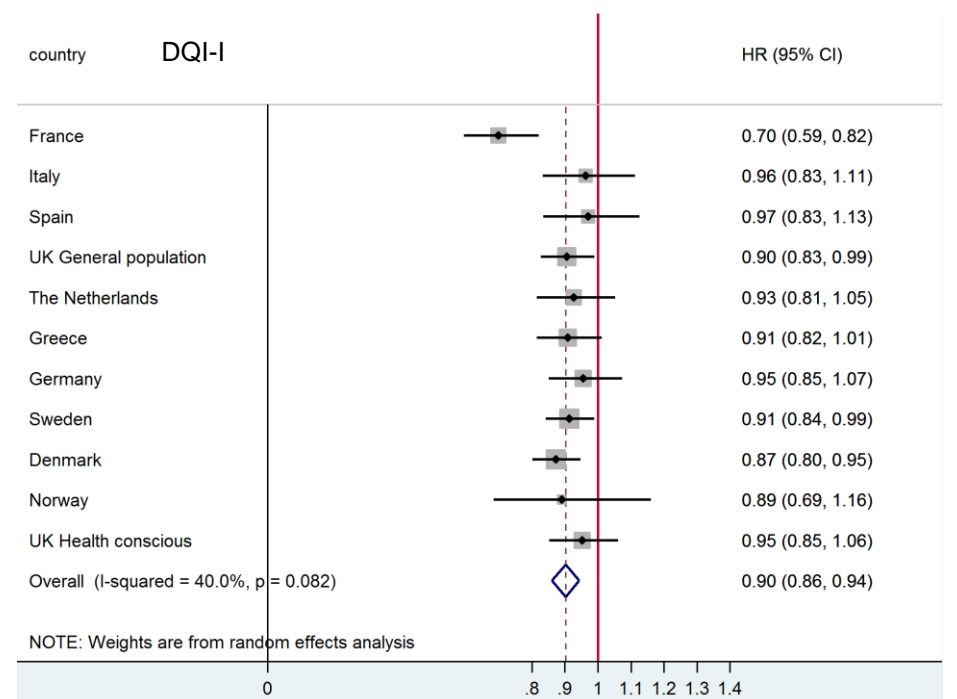
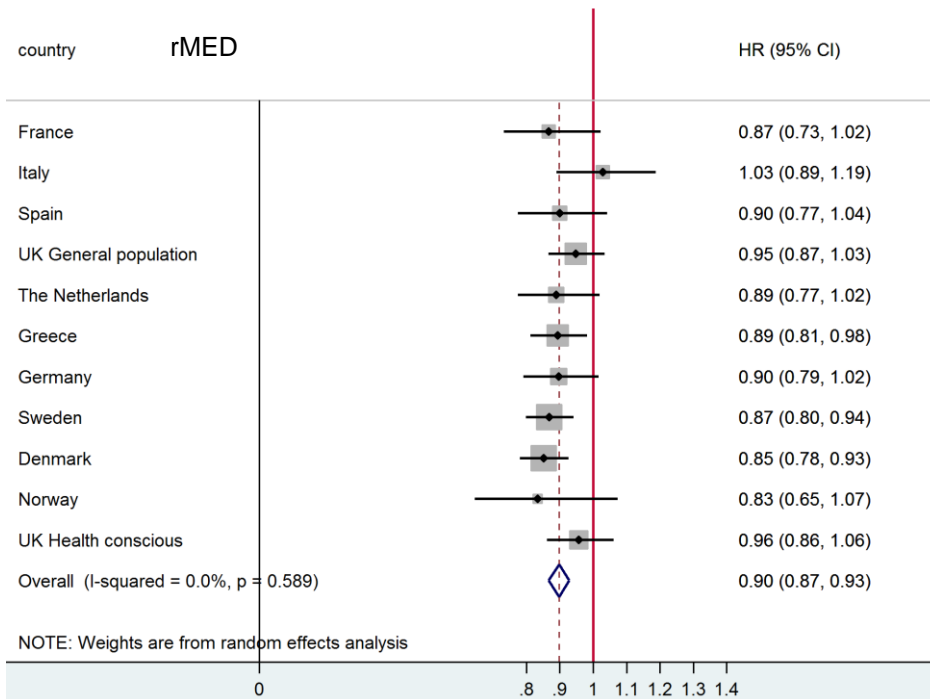
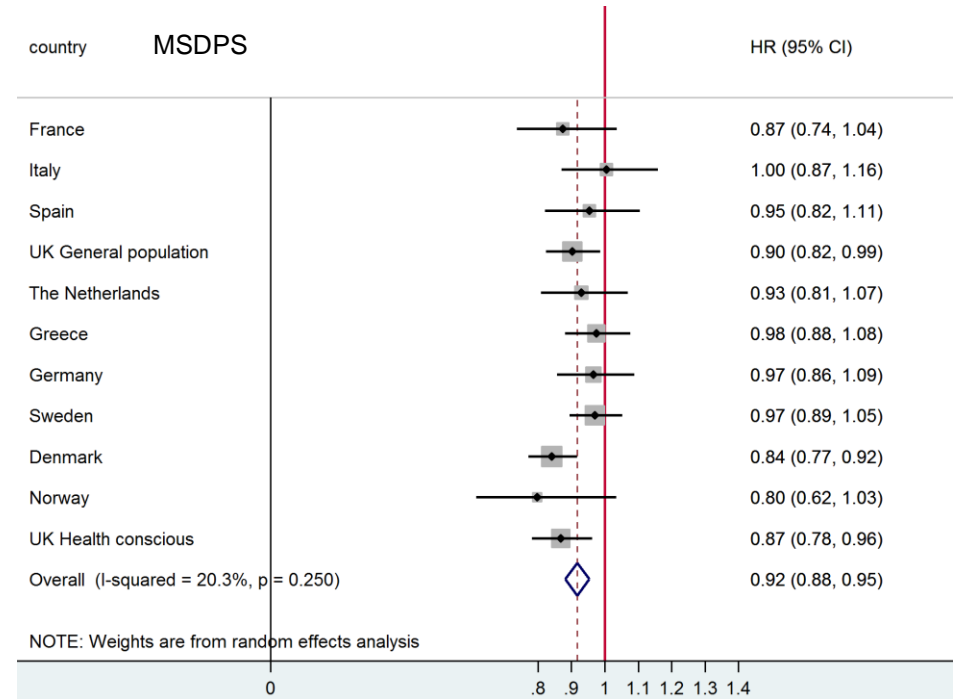
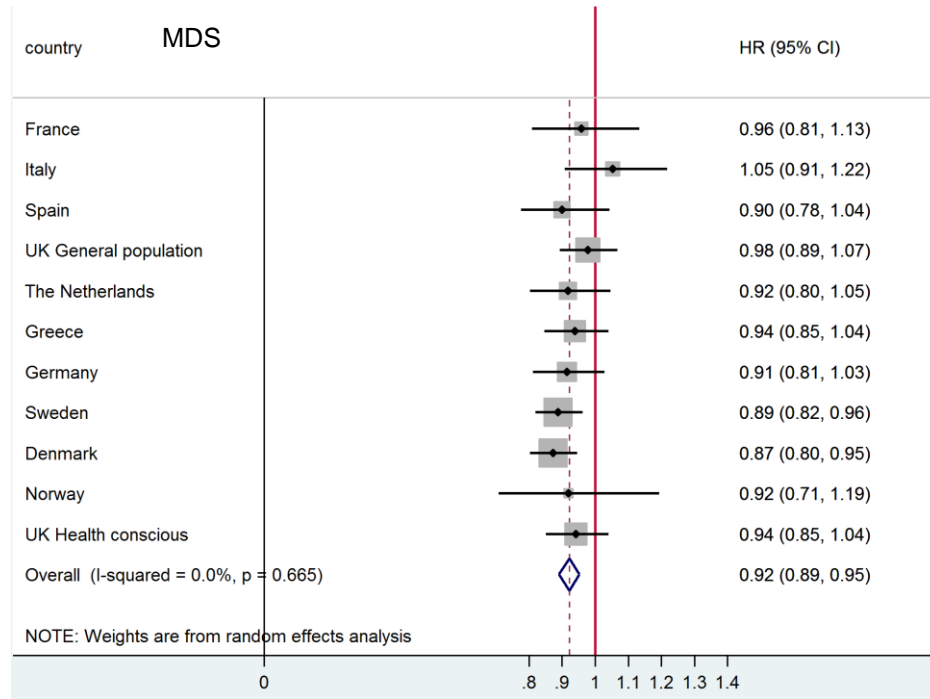
**S2a Fig. Multivariate hazard ratios (Model 2: adjusted for age and lifestyle risk factors) for 10-year all-cause mortality risk for a 1SD increase of score among 451,256 participants of the EPIC study, by country**

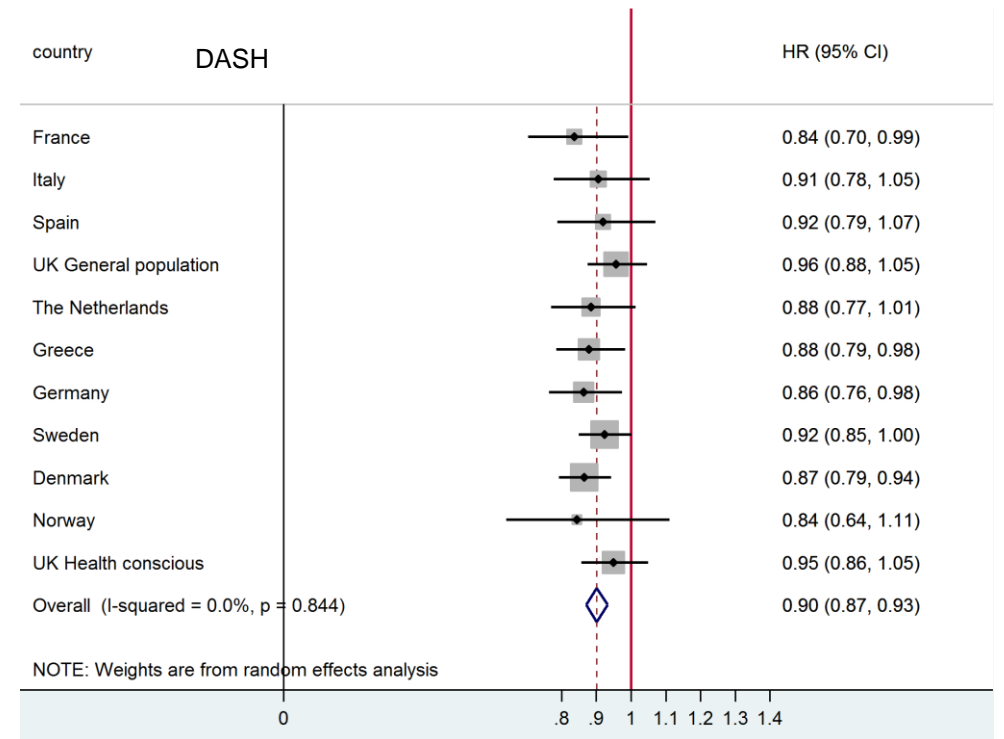
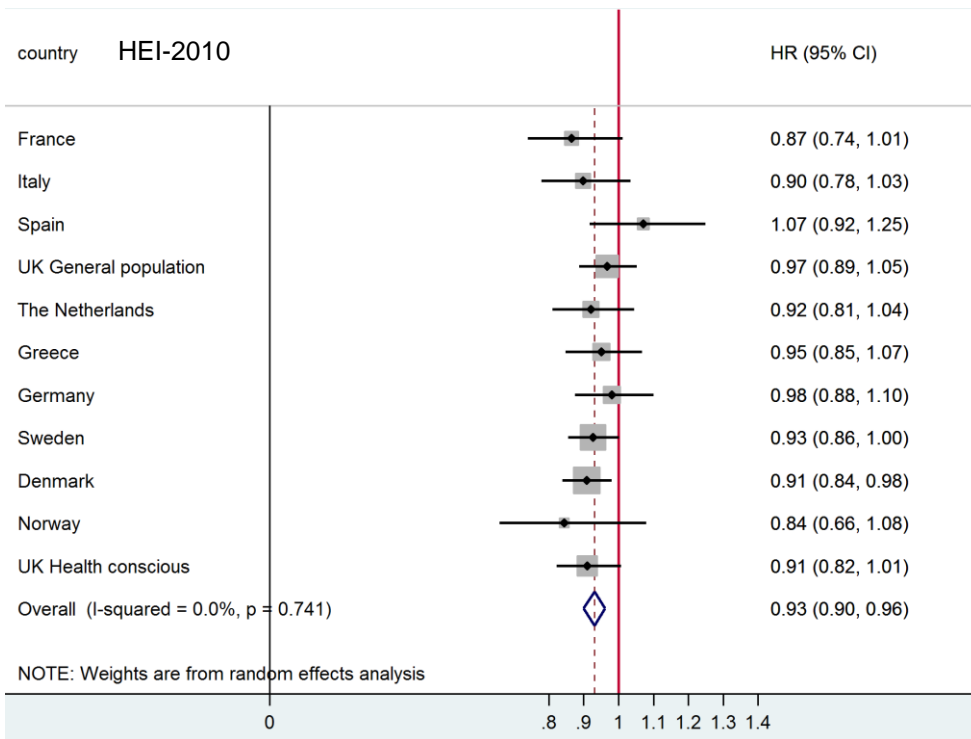
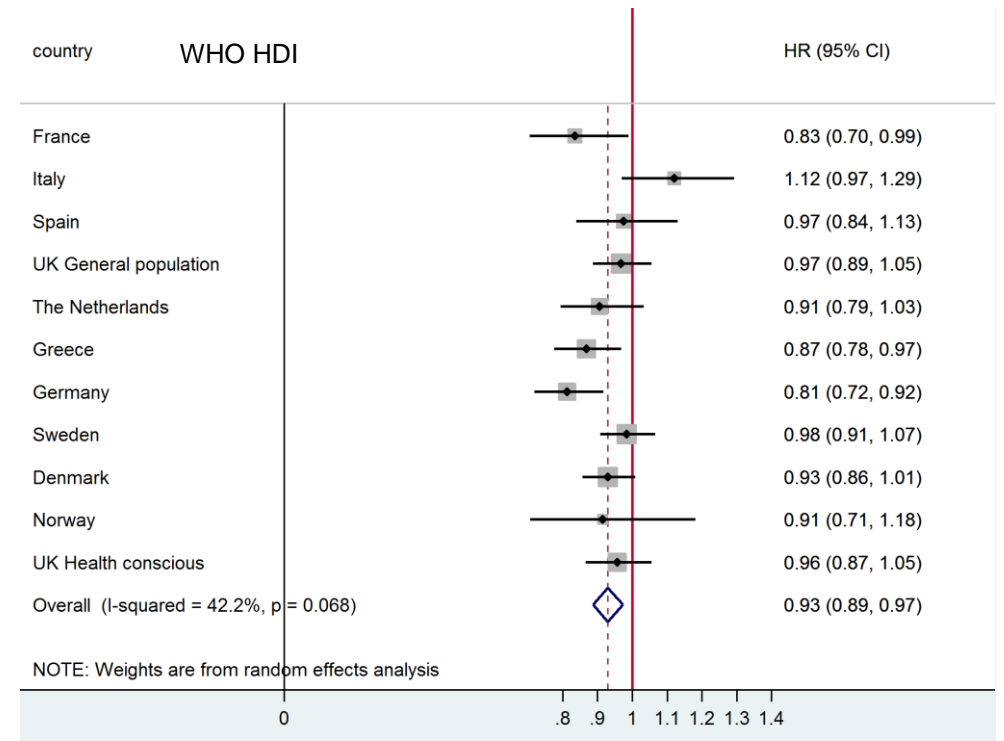
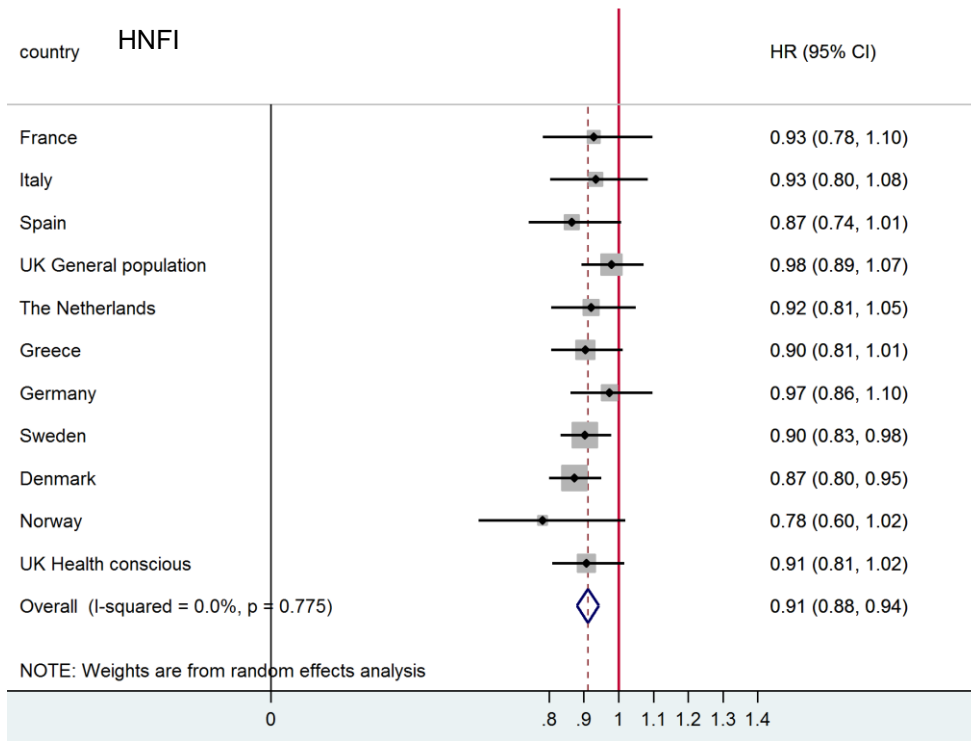


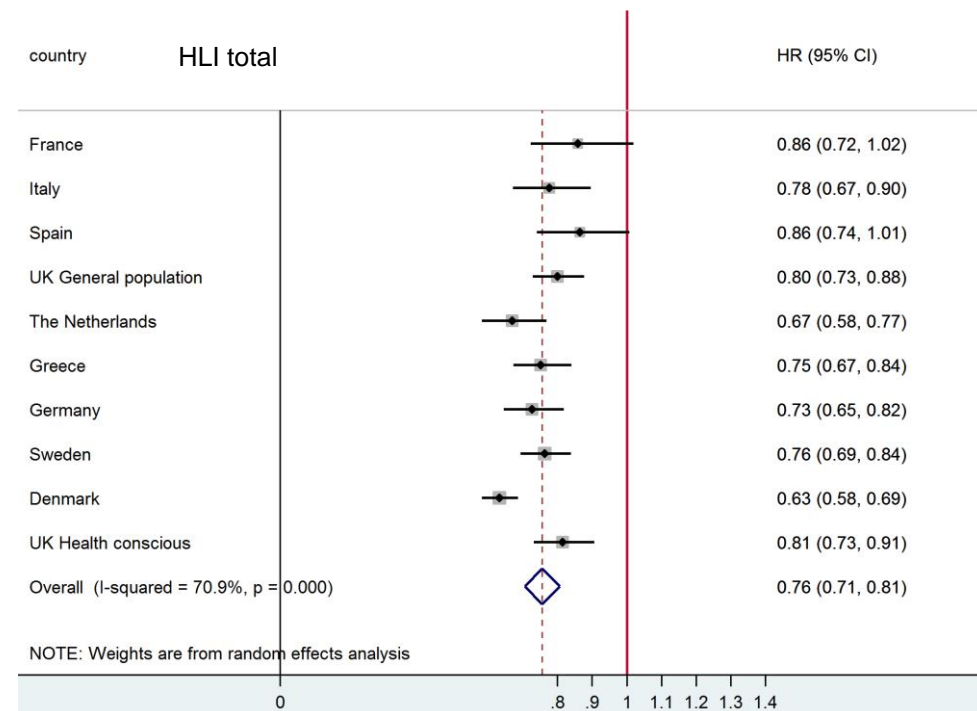
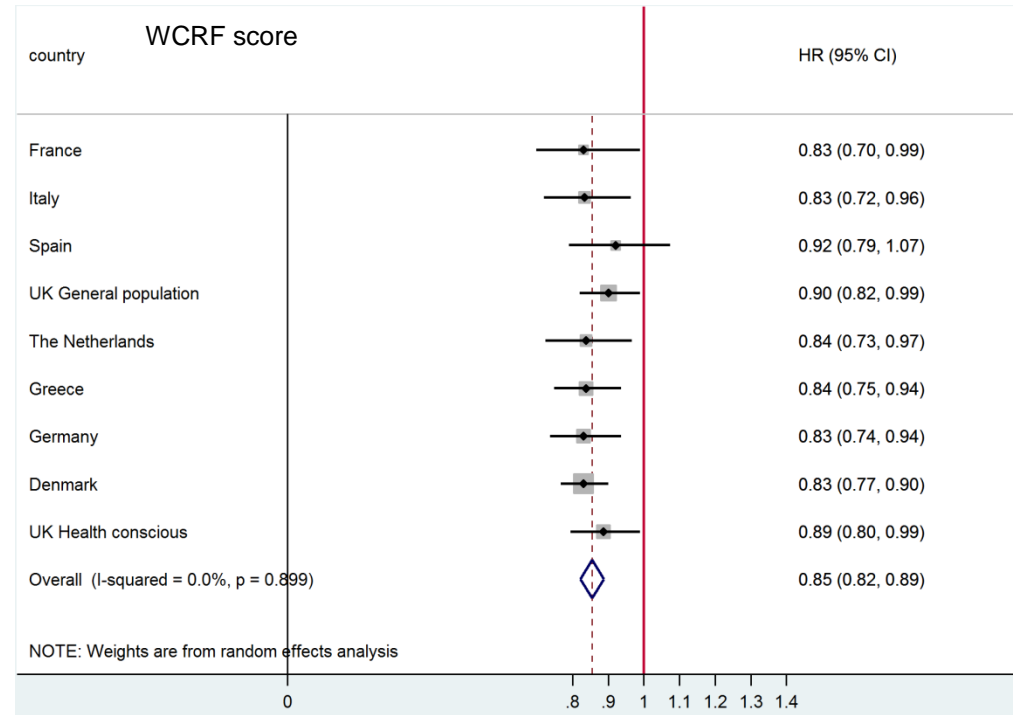
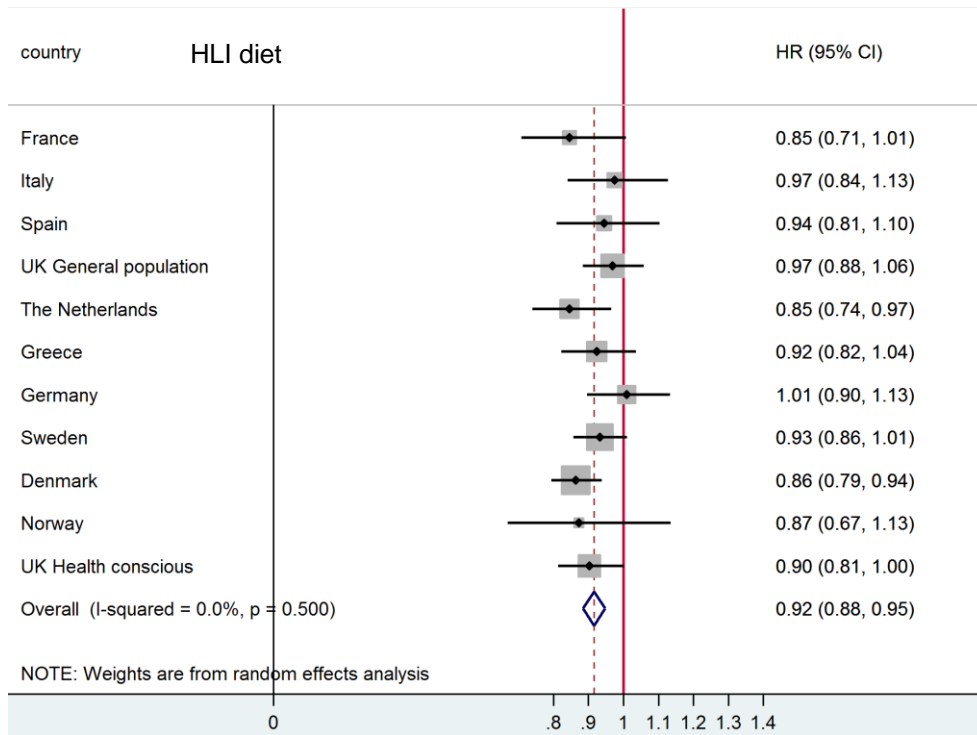




**S2b Fig. Multivariate hazard ratios (Model 2: adjusted for age and lifestyle risk factors) for 10-year CVD mortality risk for a 1SD increase of score among 451,256 participants of the EPIC study, by country.**







**S2c Fig. Multivariate hazard ratios (Model 2: adjusted for age and lifestyle risk factors) for 10-year cancer mortality risk for a 1SD increase of score among 451,256 participants of the EPIC study, by country.**

