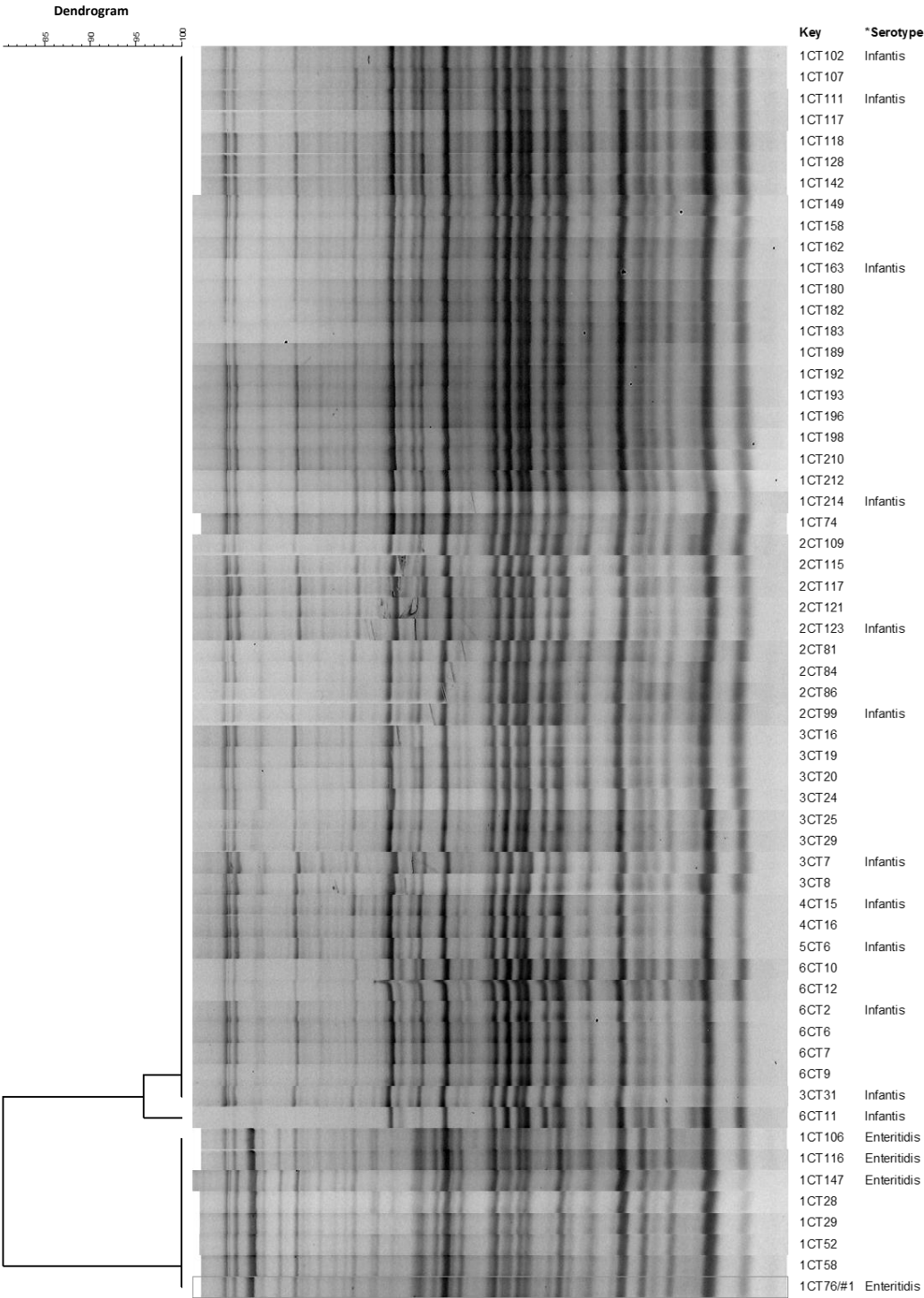


Figure A. ERIC-PCR profiles of the 59 tested *Salmonella* isolates.



* Selected isolates for serotyping according to the Kaufmann-White scheme

Figure B. PFGE profiles of the 62 *Salmonella* isolates collected from the positive broiler batches.

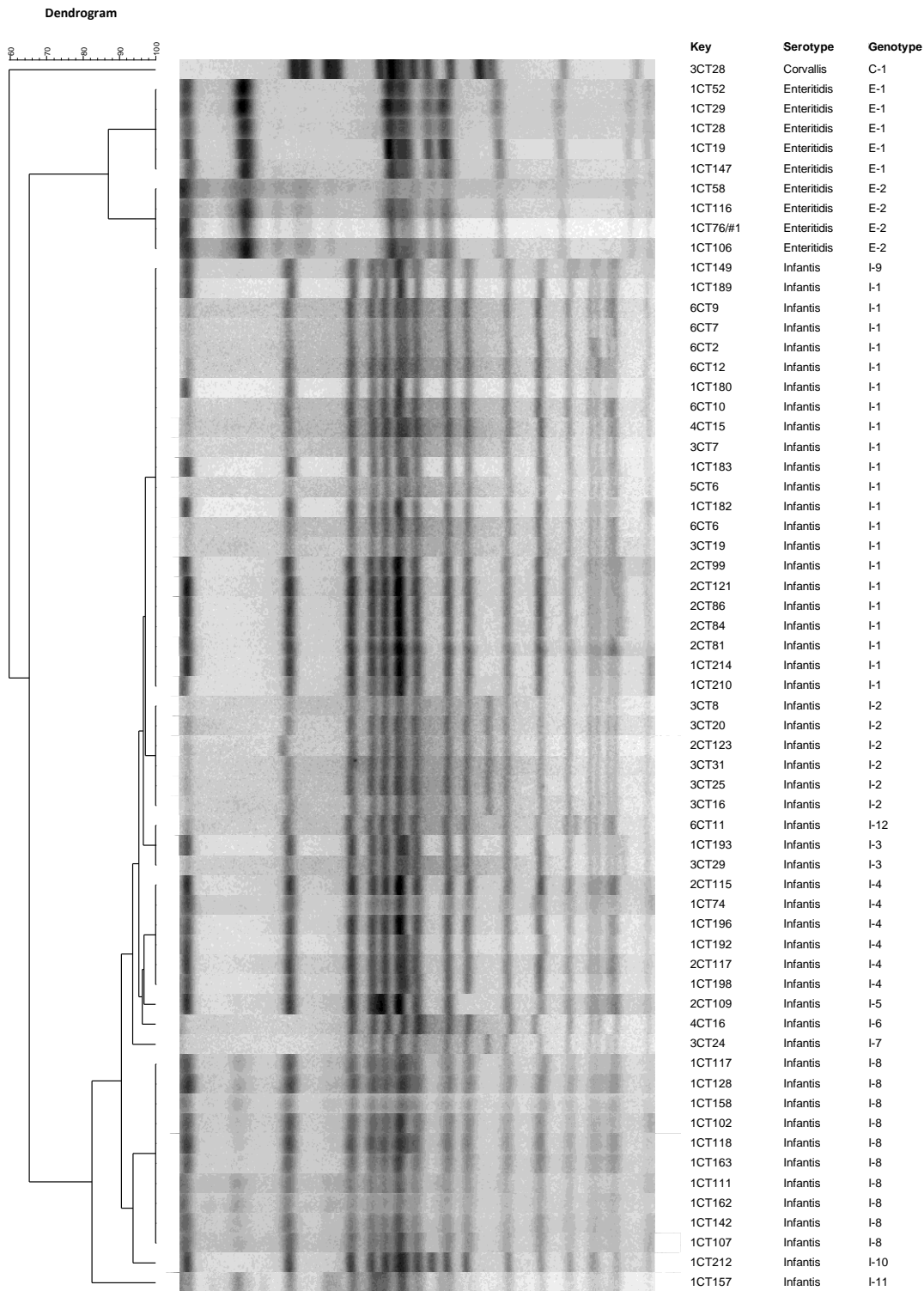


Table A. Distribution of the minimal inhibitory concentration values for the 62 *Salmonella* isolates collected from the positive broiler batches

Antibiotic	Number of <i>Salmonella</i> isolates with minimal inhibitory concentrations ($\mu\text{g}/\mu\text{l}$)																
	0,02	0,03	0,06	0,12	0,25	0,5	1	2	4	8	16	32	64	128	256	512	1024
Sulfamethoxazole													2	2	3	1	54
Gentamicin				12	8		1	15	23	3							
Ciprofloxacin	5	2	3	20	26	6											
Ampicillin					4	9	6	1						42			
Cefotaxime			8	8	1	1	1		42					1			
Ceftazidime					11	5	6	36	4								
Tetracycline							5	4	2	1	1	48	1				
Streptomycin								3	5	2	3	31	15	3			
Trimethopim						11	1			2	1	47					
Chloramphenicol								13	6	2	1	1	39				
Colistin								52	10								
Florfenicol								14	4	2		1	41				
Kanamycin									30				2	30			
Nalidixic acid									7	1	1		53				

Full vertical lines indicate epidemiological break points for resistance described by European Committee on Antimicrobial Susceptibility Testing (EUCAST, 2015). Clinical break points for resistance described by the Clinical and Laboratory Standards Institute (CLSI, 2014) were used for Kanamycin and Sulfamethoxazole.