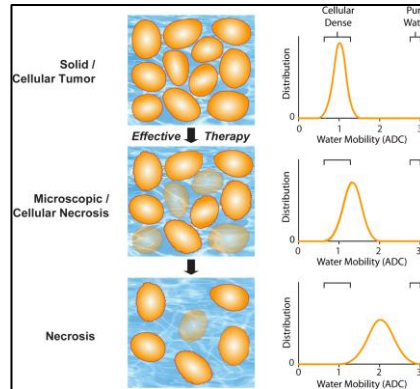


DW-MRI is sensitive to cellular changes and has been extensively evaluated as a quantitative and early imaging biomarker of therapeutic response. DW-MR can be applied to many different solid tumors to detect changes in cellularity as measured by an early increase in the apparent diffusion coefficient (ADC) of water molecules within the lesion. An overview of DW-MRI acquisition protocols, quantitative image analysis approaches and an overview of applications implementing DW-MRI for early prediction of cancer treatment response are presented.



Diffusion MRI in Early Cancer Therapeutic Response Assessment

C. J. Galbán, B. A. Hoff,
T. L. Chenevert and B. D. Ross*