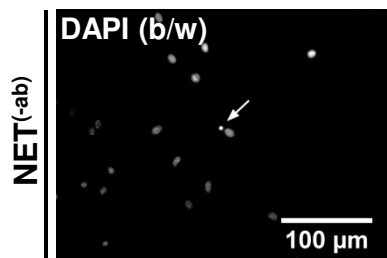
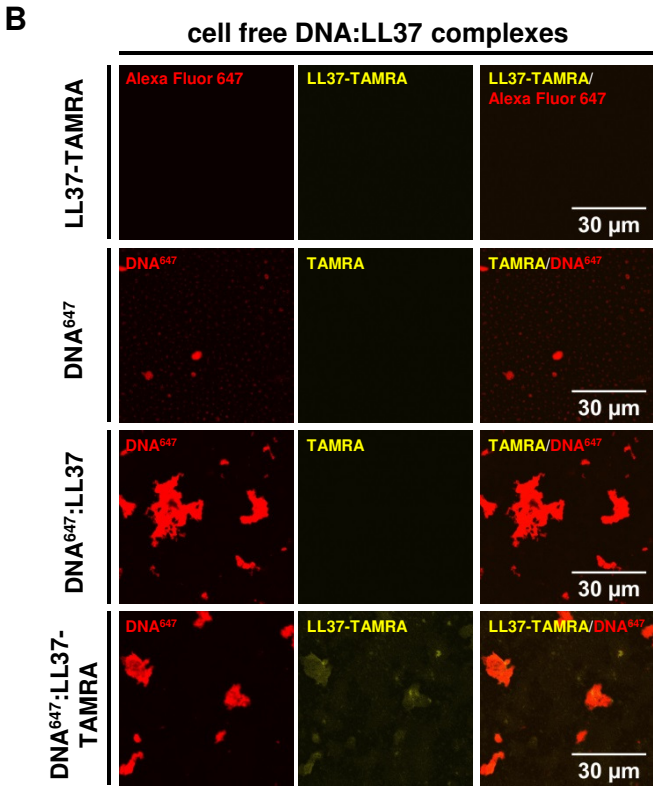
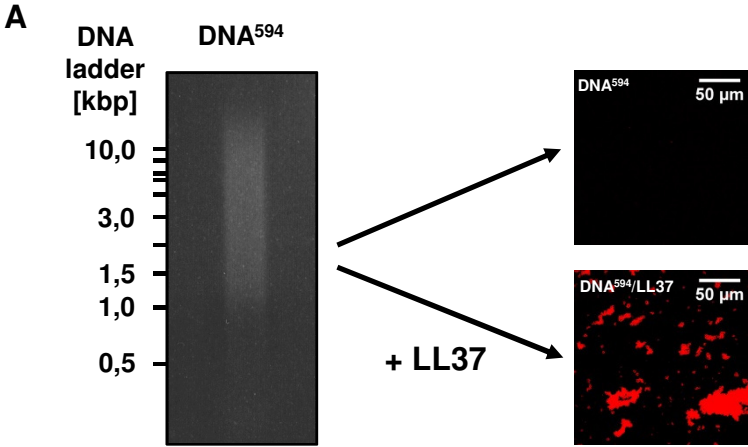


Figure S1



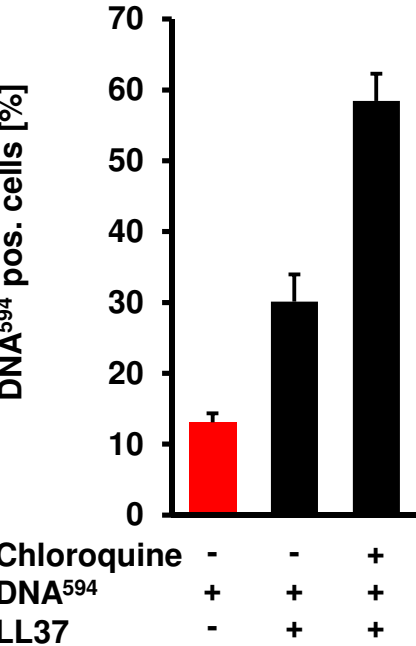
**Supplemental Figure 1. NETs are internalized into human macrophages.** Human macrophages were cultured with isolated NETs and stained with DAPI. Cells were analyzed by fluorescence microscopy. White arrow points to NET DNA. (b/w): black and white.

Figure S2



**Supplemental Figure 2. Cell free LL37:DNA complexes.** (A) Human genomic, labeled DNA (DNA<sup>594</sup>) was visualized on an agarose gel (left). DNA was complexed with LL37 or not and analyzed by confocal microscopy (right). (B) Confocal microscopy analyses of LL37-TAMRA, DNA<sup>647</sup>, as well as complexes of LL37 and DNA<sup>647</sup> and complexes of LL37-TAMRA and DNA<sup>647</sup>.

Figure S3



**Supplemental Figure 3. Human macrophages internalize LL37:DNA complexes.**

Human macrophages were incubated with DNA<sup>594</sup> or LL37:DNA<sup>594</sup> complexes with or without the addition of chloroquine. A minimum of 79 cells were counted and analyzed for the number of DNA<sup>594</sup> positive cells. Bars represent mean of one experiment analyzed by four individual investigators. Error bars show mean of DNA<sup>594</sup> positive cells in %±SEM.