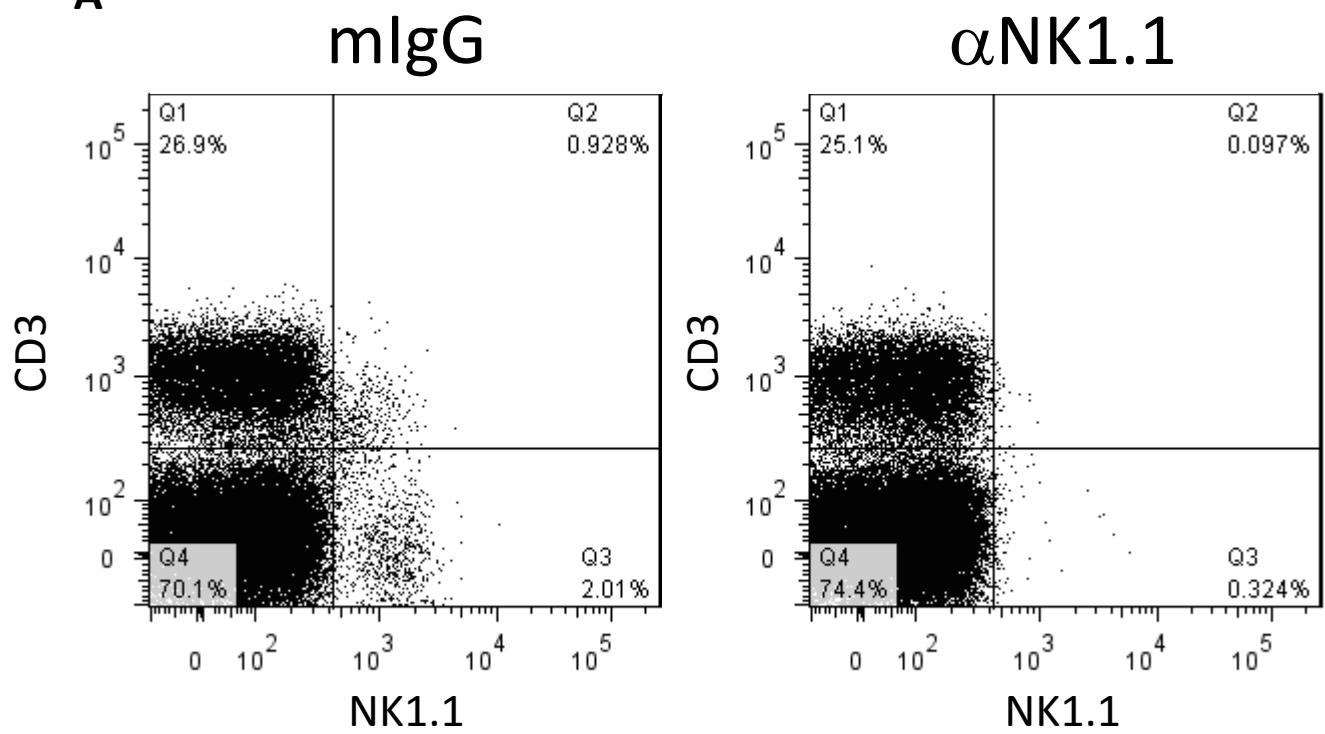


Supplemental Information

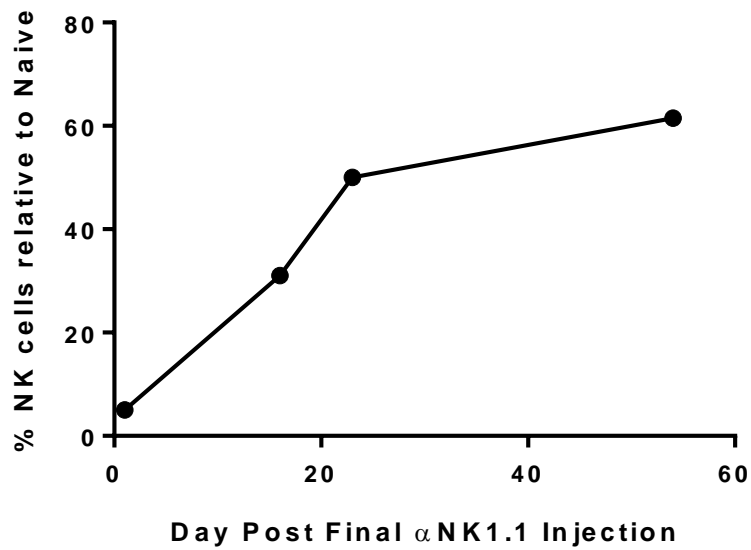
Phenotypical distinct helper NK cells are required for
gp96-mediated anti-tumor immunity

Sedlacek AL, Kinner-Bibeau LB, and Binder RJ

A



B



Supplemental Figure 1. **Whole mouse depletion of NK cell cells is specific, durable and long lasting.** Mice treated with anti-NK1.1 were assessed for NK cell depletion by flow cytometric analysis of spleens. (A) Mice were treated with anti-NK1.1 as in Fig 1B and sacrificed on Day 0 to determine NK cell frequency. (B) NK cell recovery over time was assessed by monitoring splenic NK cell frequencies relative to naïve mice.