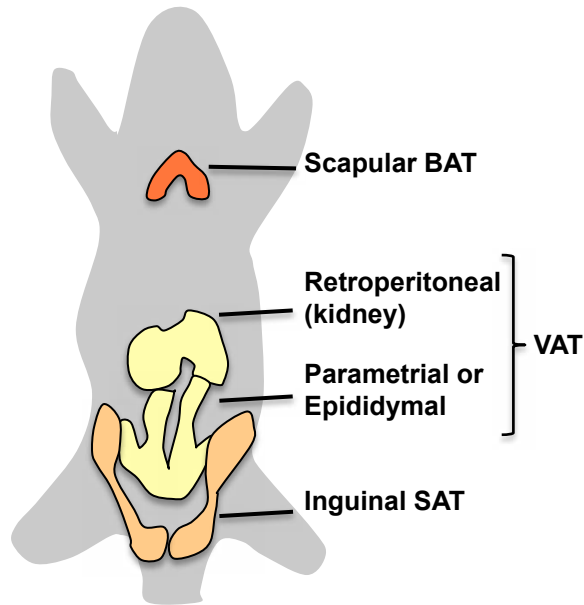
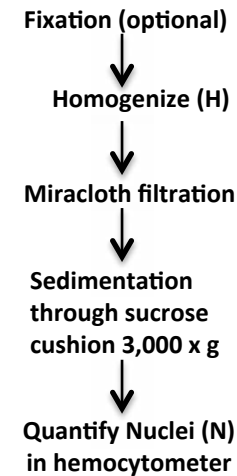


Supplemental Figure S7: Enrichment protocol for SAT, VAT, and BAT cellular nuclei prior to capture.

A. BAT, VAT, and SAT were harvested from 4 locations in the mouse.

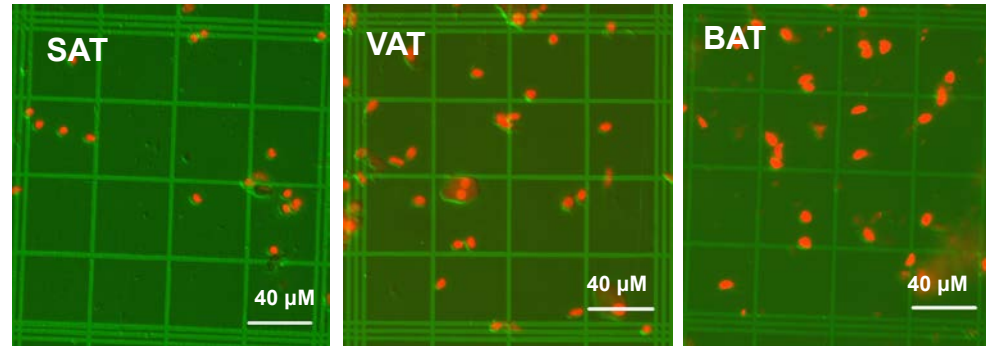


B. Nuclear Isolation Protocol



Supplemental Figure S7: continued

C. Nuclear count & purity of DAPI stained nuclei were evaluated on a hemocytometer using combined IFM and DIC microscopy



D. Western analysis of nuclear protein enrichment

