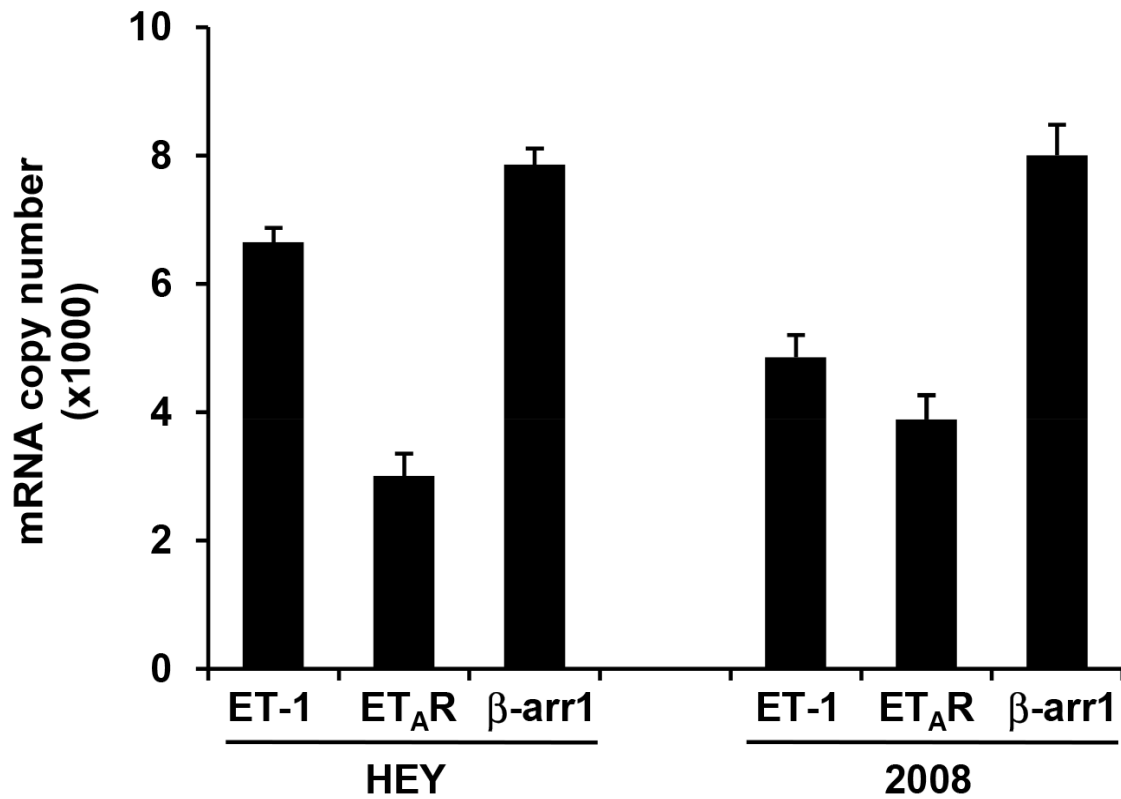
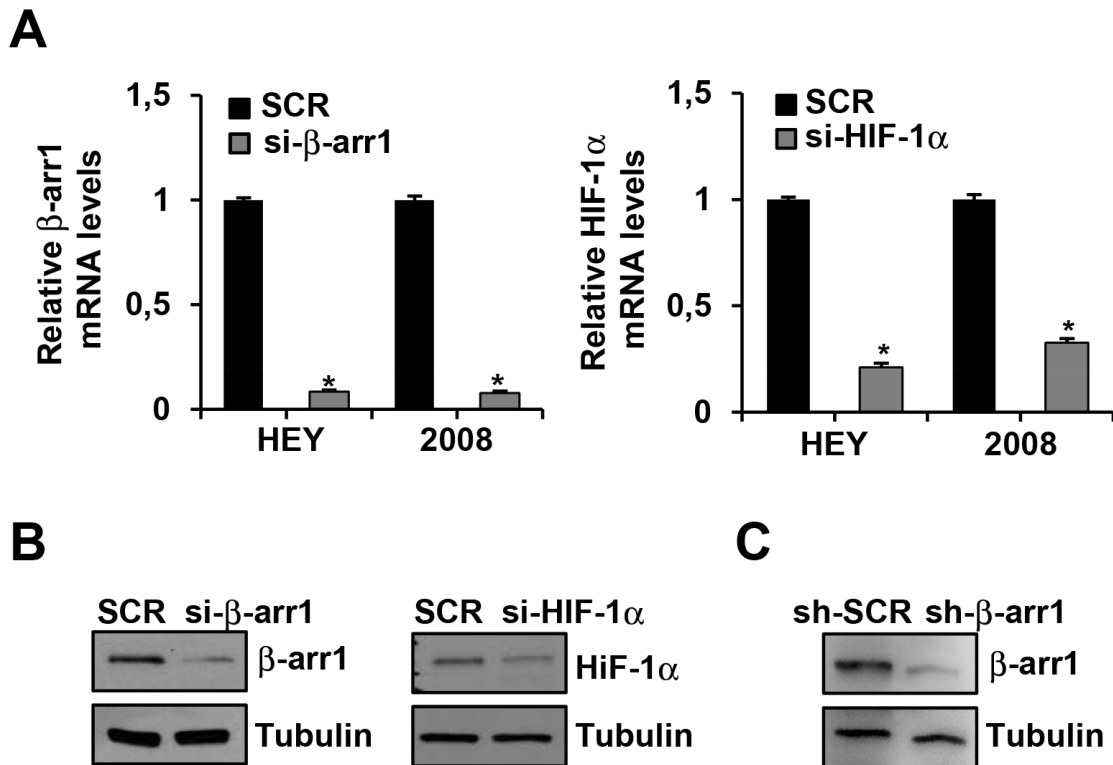


Nuclear β -arrestin1 is a critical cofactor of hypoxia-inducible factor-1 α signaling in endothelin-1-induced ovarian tumor progression

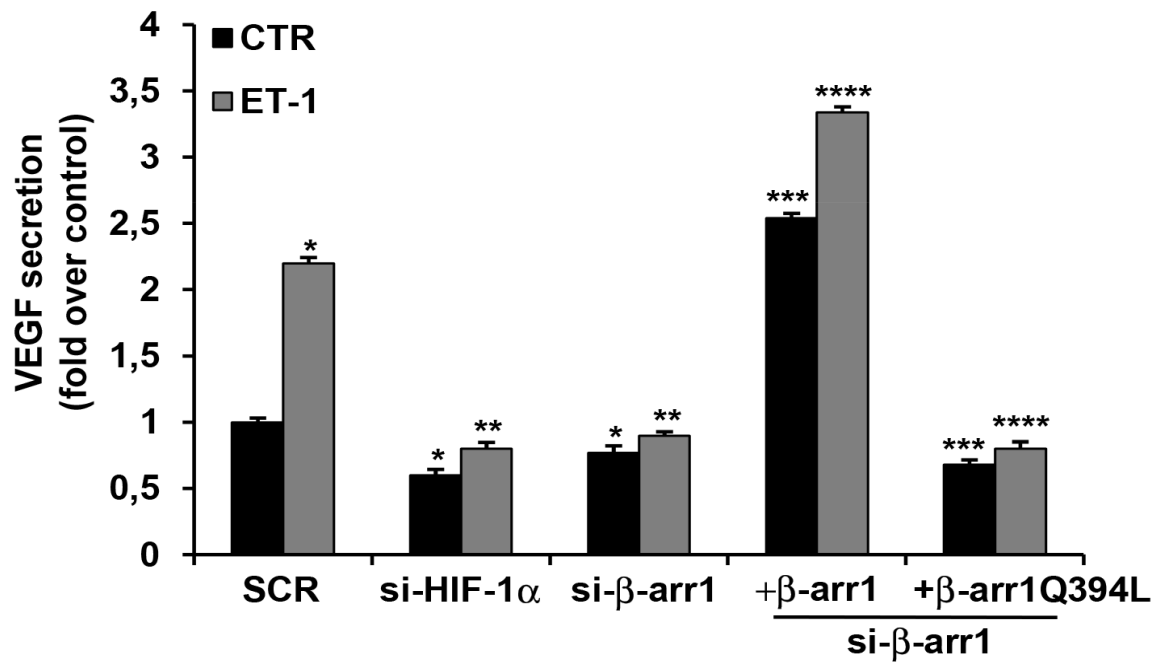
Supplementary Material



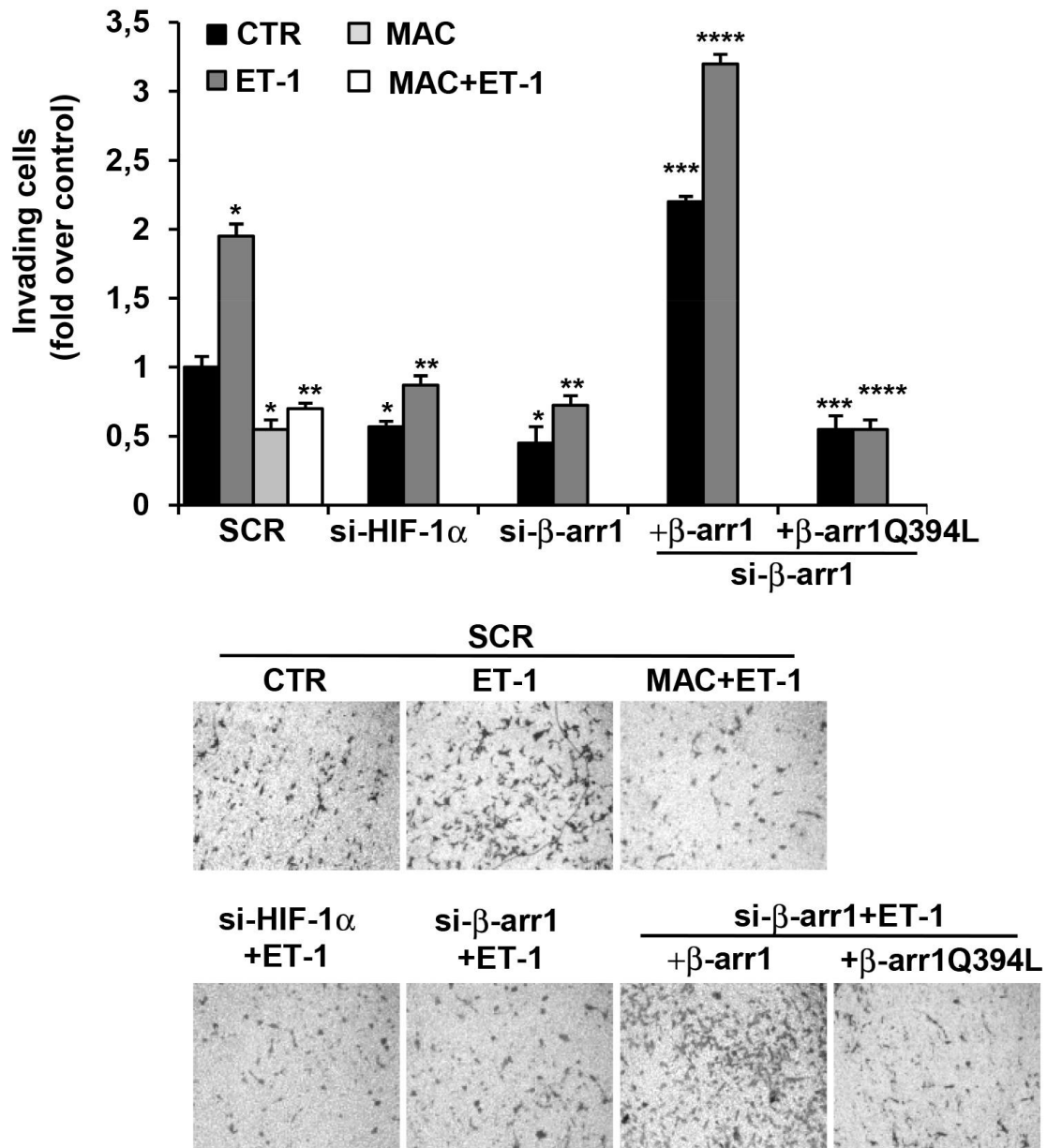
Supplementary Figure 1. ET-1, ET_AR, and β -arr1 expression in EOC cells. qRT-PCR analysis of ET-1, ET_AR, and β -arr1 expression in HEY and 2008 cells. Bars are means \pm SD from three independent experiments each performed in triplicate.



Supplementary Figure 2. Analysis of β -arr1 and HIF-1 α knockdown. (A) qRT-PCR analysis of β -arr1 and HIF-1 α expression levels in HEY and 2008 cells transfected with SCR or si- β -arr1 or si-HIF-1 α . Bars are means \pm SD from three independent experiments each performed in triplicate; *, $p < 0,001$ versus SCR. **(B)** Lysates of HEY cells transfected with SCR or si- β -arr1 or si-HIF1 α were analyzed by IB for expression of β -arr1 or HIF-1 α . Tubulin was used as loading control. **(C)** Lysates of HEY cells stably expressing sh-SCR, sh- β -arr1 were IB for β -arr1 protein expression levels by using anti- β -arr1. Tubulin was used as loading control.



Supplementary Figure 3. The secretion of VEGF by EOC cells requires β -arr1 and HIF-1 α . (A) VEGF protein secretion evaluated by ELISA in conditioned media of HEY cells transfected with SCR or si-HIF1 α or si- β -arr1 and rescued with β -arr1 or β -arr1Q394L expression vectors and treated or not with ET-1 for 24 h. Bars are means \pm SD from three independent experiments each performed in triplicate; *, $p < 0.05$ versus CTR; **, $p < 0.05$ versus ET-1; ***, $p < 0.002$ versus si- β -arr1; ****, $p < 0.005$ versus si- β -arr1 and ET-1.



Supplementary Figure 4. ET_AR/ β -arr1 driven HIF-1 α signaling sustains cell invasion.

Cell invasion assay was performed in HEY cells, transfected with SCR, or si-HIF-1 α , or si- β -arr1 or si- β -arr1 rescued with β -arr1 or β -arr1Q394L expression vectors. ET-1 in the absence or presence of MAC was used as chemoattractant. Bars are means \pm SD from three independent experiments each performed in triplicate; *, p<0.05 versus SCR-CTR; **, p<0.001 versus SCR-ET-1; ***, p<0.002 versus si- β -arr1; ****, p<0.005 versus si- β -arr1 and ET-1. Representative images of invading cells (*bottom panels*).