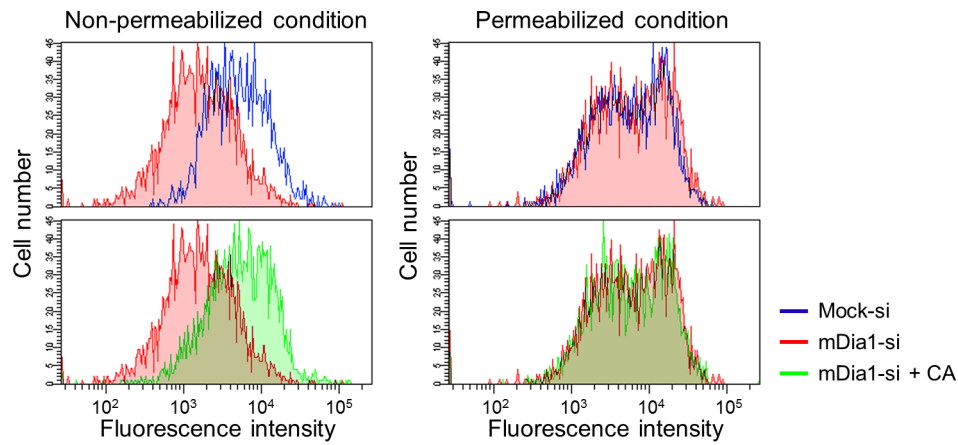


SUPPLEMENTARY FIGURE



Supplementary Figure S1. Localization of cell surface MT1-MMP is regulated by mDia1. Flow cytometry analysis was performed for permeabilized and non-permeabilized samples to quantify total and membrane-associated MT1-MMP, respectively. Cells transfected with mock siRNA (Mock-si), mDia1 siRNA (mDia1-si) plus GFP, or mDia1 siRNA plus GFP-tagged mDia1-CA plasmid (mDia1-si + CA) were incubated for 24 h, then fixed and stained with an antibody against MT1-MMP, followed by an Alexa Fluor[®] 647-labeled secondary antibody. GFP-positive cells were first sorted and then, the fluorescence of Alexa Fluor[®] 647 was quantified by flow cytometry.