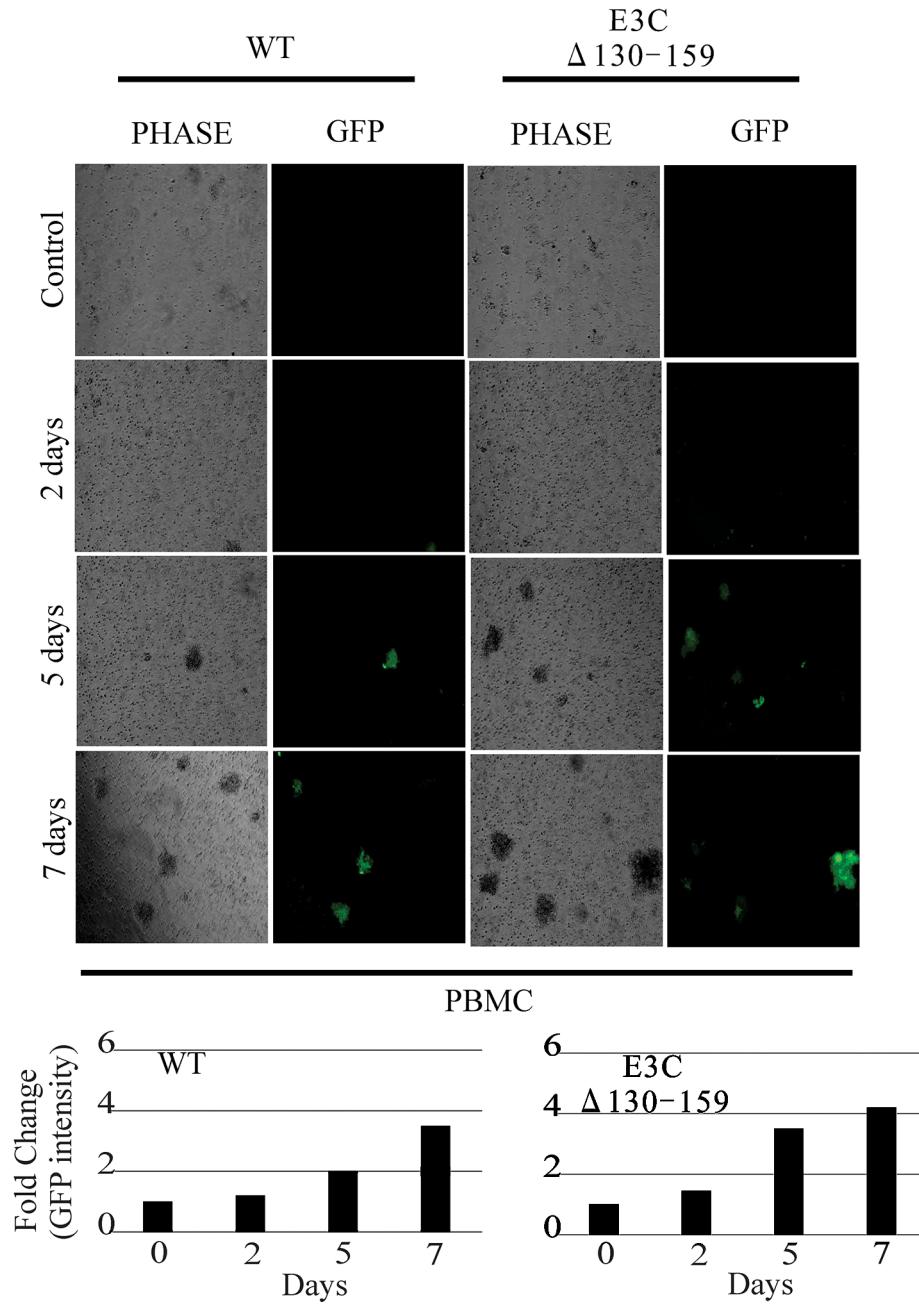


SUPPLEMENTARY FIGURE AND TABLE



Supplementary Figure S1: BACEBV-GFPWT and EBVGFP Δ E3C130-159 infection in PBMCs. PBMCs were infected with BACEBV-GFPWT (WT) and deleted residue of (EBVGFP Δ E3C130-159) 130-159 for EBNA3C. Microscopy were performed in days dependent manner as there viruses have GFP signals. Quantitation of GFP plotted according to images represented in figure.

Supplementary Table S1: Primer and oligo sequences**EBV delta E3C 130-159 galk insertion cassette [galk sequence Underlined]**

Sense	ATGCTGCCTGCCGGGCTGTCAAGCAATCGCACCTGCAAGCG CTATCAAACCCTGTTGACAATTAATCATCGGCA
Antisense	GGAGATGTTAGAAGCCAATGTCGCCAACCCACACCCGCCCTC CGCAACCAATCAGCACTGTCCTGCTCCTT

EBV delta E3C 130-159 galk removal cassette [100 bp]

Sense	ATGCTGCCTGCCGGGCTGTCAAGCAATCGCACCTGCAAGCG CTATCAAACCTTGGTTGCGGAGGGCGGTGTGGGTTGGCGACA TTGGCTTCTAACATCTCC
Antisense	GGAGATGTTAGAAGCCAATGTCGCCAACCCACACCCGCCCTC CGCAACCAAGTTTGATAGCGCTTGCAGGTGCGATTGCTTGAC AGCCCCGGCAGGCAGCAT

EBNA3C 130-159 (Junction PCR)

Sense	GCATCAGGCGAAGGCGGAGAAGAC
Antisense	CTGGCTGCCATCACGAAGCACAAG

EBNA-1

Sense	CATTGAGTCGTCTCCCCTTTGGAAT
Antisense	TCATAACAAGGTCCTTAATCGCATC

P53

Sense	CCT GAGGTTGGCTCTGACTGTA
Antisense	TCCGTCCCAGTAGATTACCAC

MDM-2

Sense	CCGGAATTCATGAGTGTGGAATCTAGTTTGC
Antisense	ATAAGAATGCGGCCGCGGGAAATAAGTTAGC

Cyclin D1

Sense	AGTTGTTGGGGCTCCTCAG
Antisense	TCTGGAGAGGAAGCGTGTGA

pRb

Sense	CAGAAGGCAACTTGACAAGAGA
Antisense	CCTTCTCGGTCCTTTGATTG

E2F1

Sense	GGCCAGGTAAGTATGATGGTCA
Antisense	GACCCTGACCTGCTGCTCT

GAPDH

Sense	TGCACCACCAACTGCTTAG
Antisense	GATGCAGGGATGATGTTC