

Supplemental Figure – Fehlings et al.

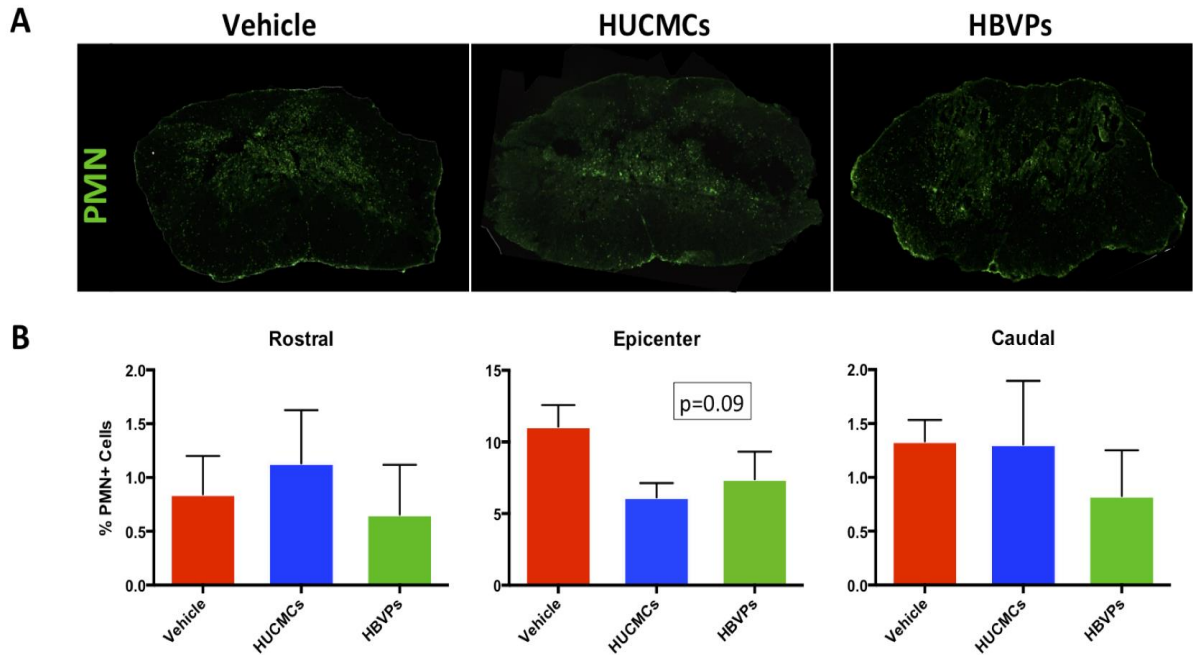


Figure S1 – Stromal cell infusion does not significantly affect neutrophil (PMN+ cell) infiltration in the spinal cord at 1 day (24 hrs) post-SC3I. Cross section epicenter representative images were taken on a Nikon Eclipse E800 fluorescence microscope at 10X (A). Neutrophil infiltration was quantified at 500-nm intervals along 1mm of the spinal cord centered on the injury epicenter (B). Results are expressed as the percentage (%) of PMN+ cells out of the total cell population (DAPI) at 1 day post-SCI, n=4 per group. One-way ANOVA (Tukey's multiple comparison), ns ($p>0.05$).