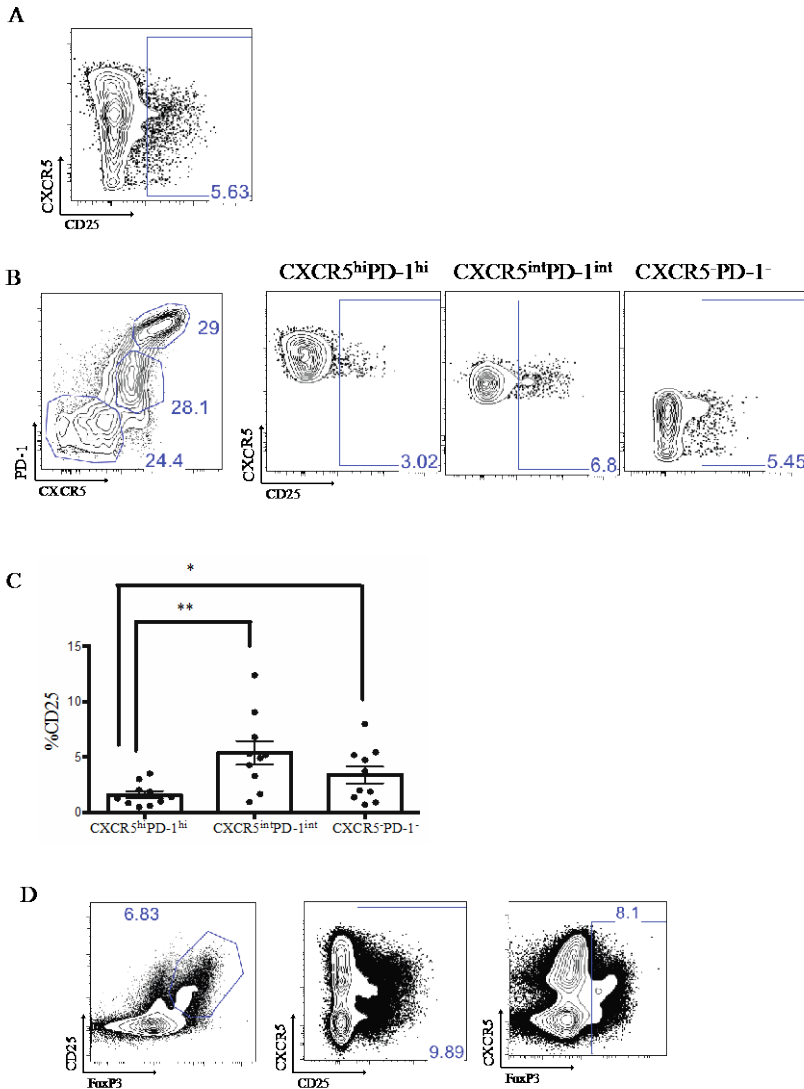
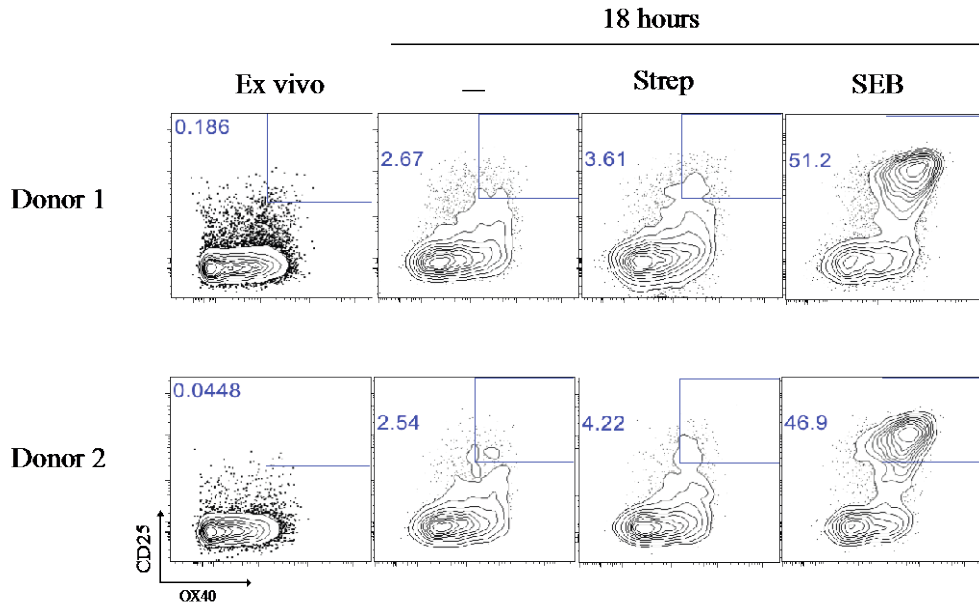


SUPPLEMENTARY FIGURE 1. Cytokine production by GC Tfh cells is low. This figure shows representative plots of the data in Figure 1. Representative FACS plots of intracellular cytokine production of IL-4⁺IL-13⁺, IL-10⁺, and IL-17⁺ by Strep-specific GC Tfh, mTfh, and non-Tfh cells, normalized to unstimulated cells per each donor. Tonsil cells were stimulated with 10ug/mL Strep or PMA/Ionomycin, as a positive control.



SUPPLEMENTARY FIGURE 2. Fresh tonsillar cells were stained for CD25 directly ex vivo, without re-stimulation. **(A).** Representative FACS plot of CXCR5 and CD25 on all CD4⁺ T cells. **(B).** Representative FACS plots of PD-1 and CXCR5 on all CD4⁺ T cells and % CD25 expression on the CXCR5^{hi}PD-1^{hi}, CXCR5^{int}PD-1^{int}, and CXCR5⁻PD-1⁻ subsets. **(C).** Quantification of % CD25 expression on the CXCR5^{hi}PD-1^{hi}, CXCR5^{int}PD-1^{int}, and CXCR5⁻PD-1⁻ subsets of CD4⁺ T cells. % CD25 (*, p=0.0195, ** p=0.0039). Data are from 10 independent donor samples. **(D).** In separate stains, intracellular staining for Foxp3 was performed. Representative FACS plots of CD25 and FoxP3; CXCR5 and CD25; and CXCR5 and FoxP3 on all CD4⁺ T cells.



SUPPLEMENTARY FIGURE 3. Representative flow cytometry plots of the GC Tfh cells from two different donor samples stained for CD25⁺OX40⁺ expression by GC Tfh cells directly ex vivo and after 18 hour stimulation.