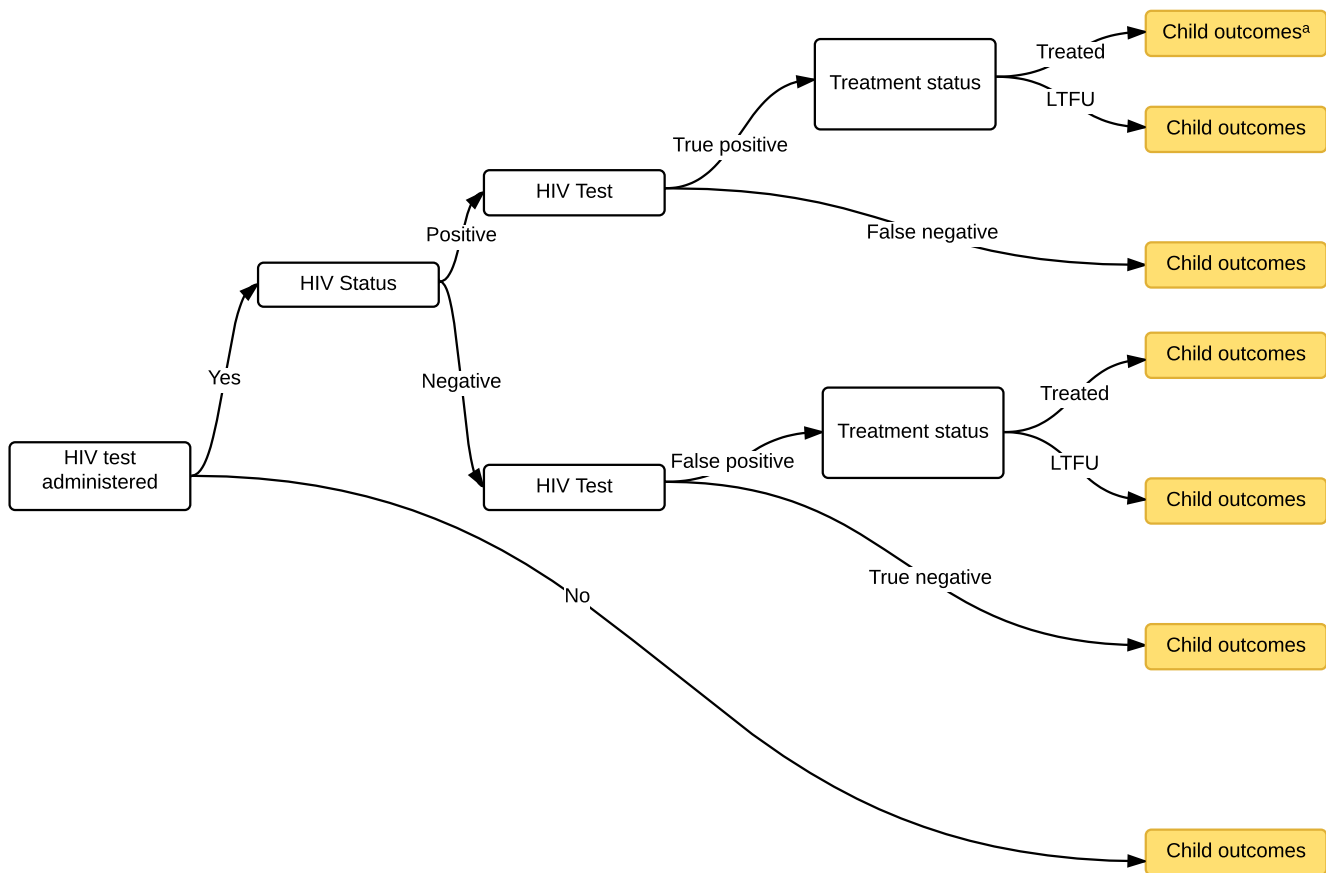


Figure W1a. Model progression for HIV-test only algorithm



Notes:

Test and treatment costs are included at each relevant stage

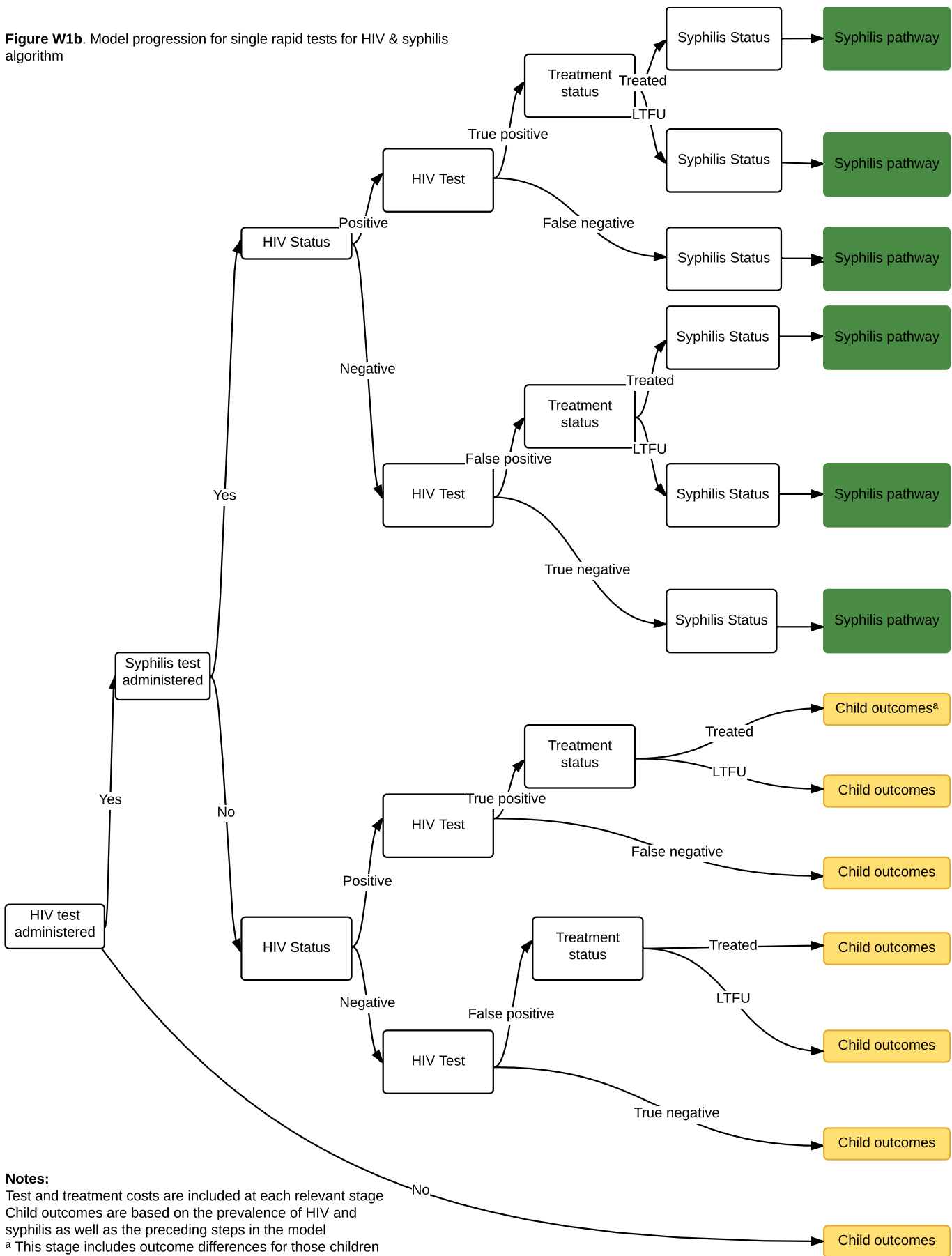
Child outcomes are based on the prevalence of HIV and syphilis as well as the preceding steps in the model

<sup>a</sup> This stage includes outcome differences for those children who were treated for MTCT

If mother received a syphilis test, she also received an HIV test

If syphilis test is positive, then treatment was given

**Figure W1b.** Model progression for single rapid tests for HIV & syphilis algorithm



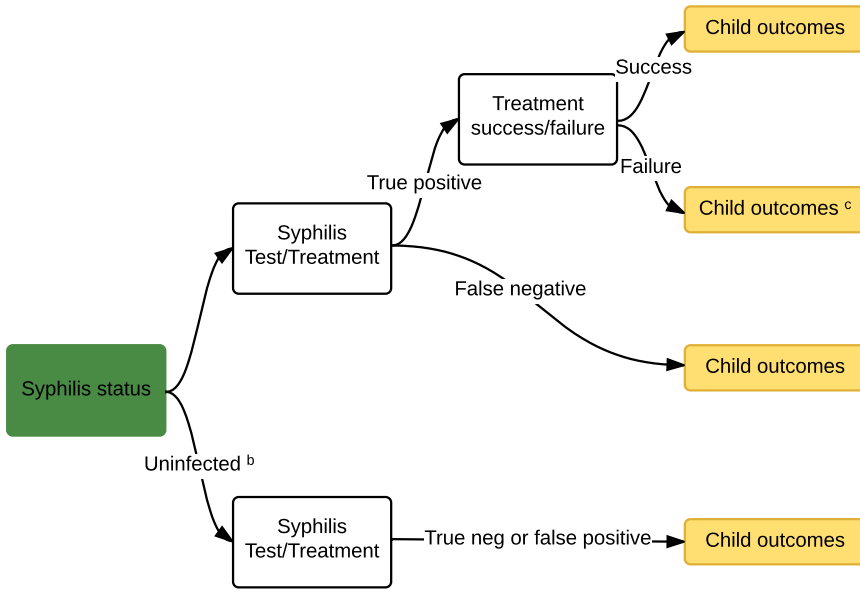
**Notes:**

Test and treatment costs are included at each relevant stage  
 Child outcomes are based on the prevalence of HIV and syphilis as well as the preceding steps in the model

<sup>a</sup> This stage includes outcome differences for those children who were treated for MTCT versus those who were not

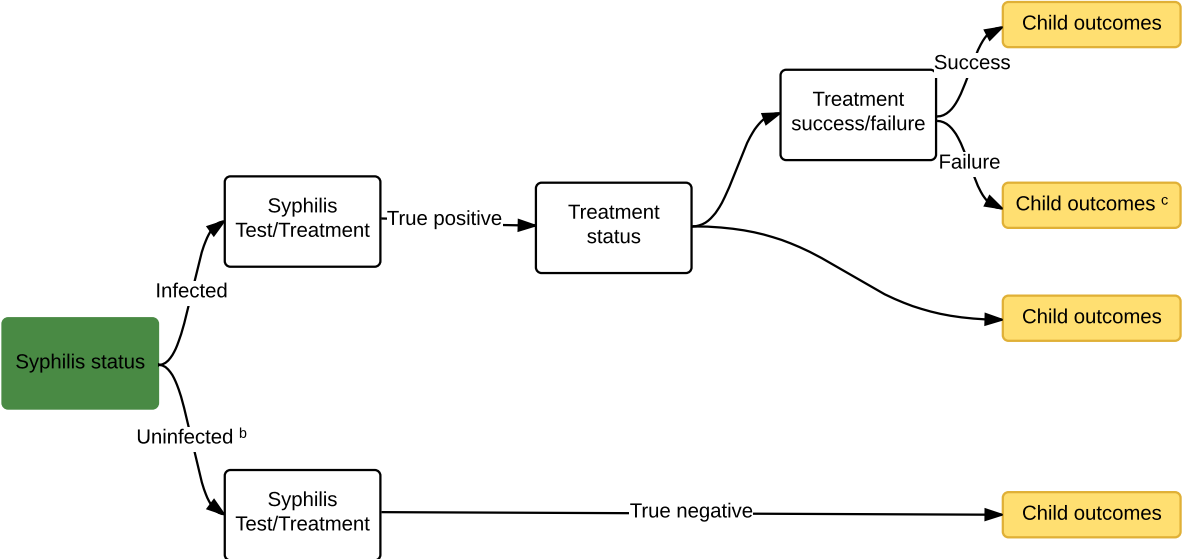
<sup>b</sup> The model separates uninfected and previously infected separately as they result in different test results. Presented together here for simplification.

Continued Figure W1b





Continued Figure W1c





Continued Figure W1d

