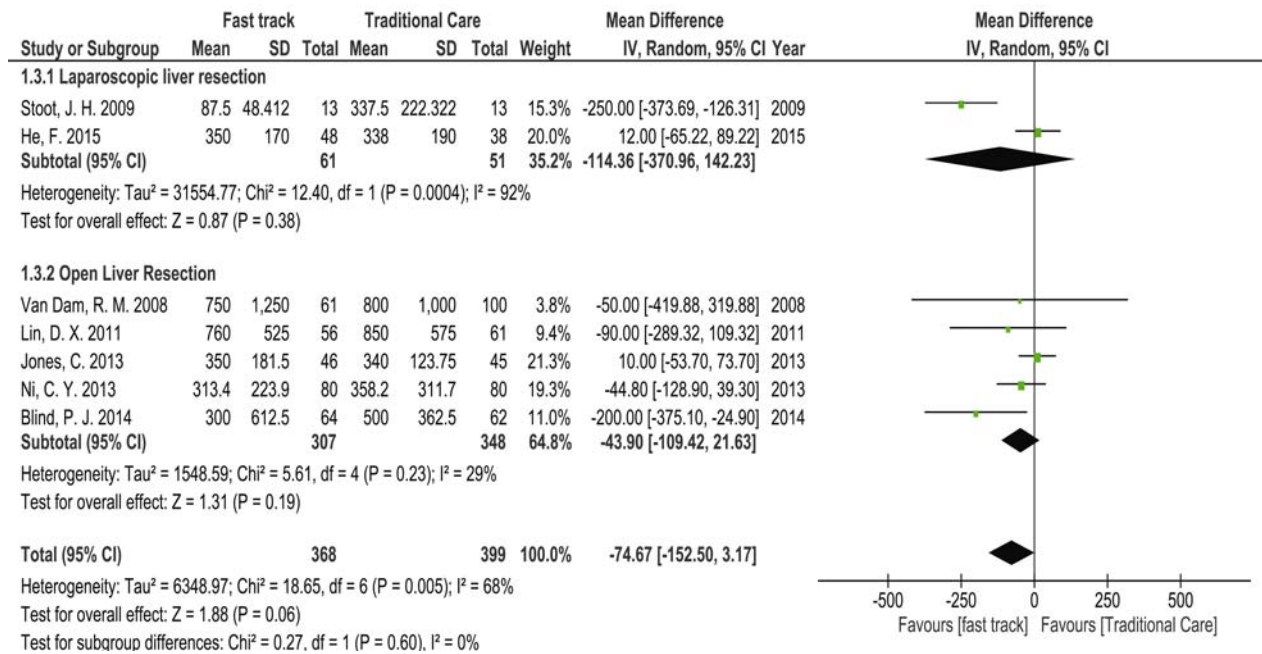


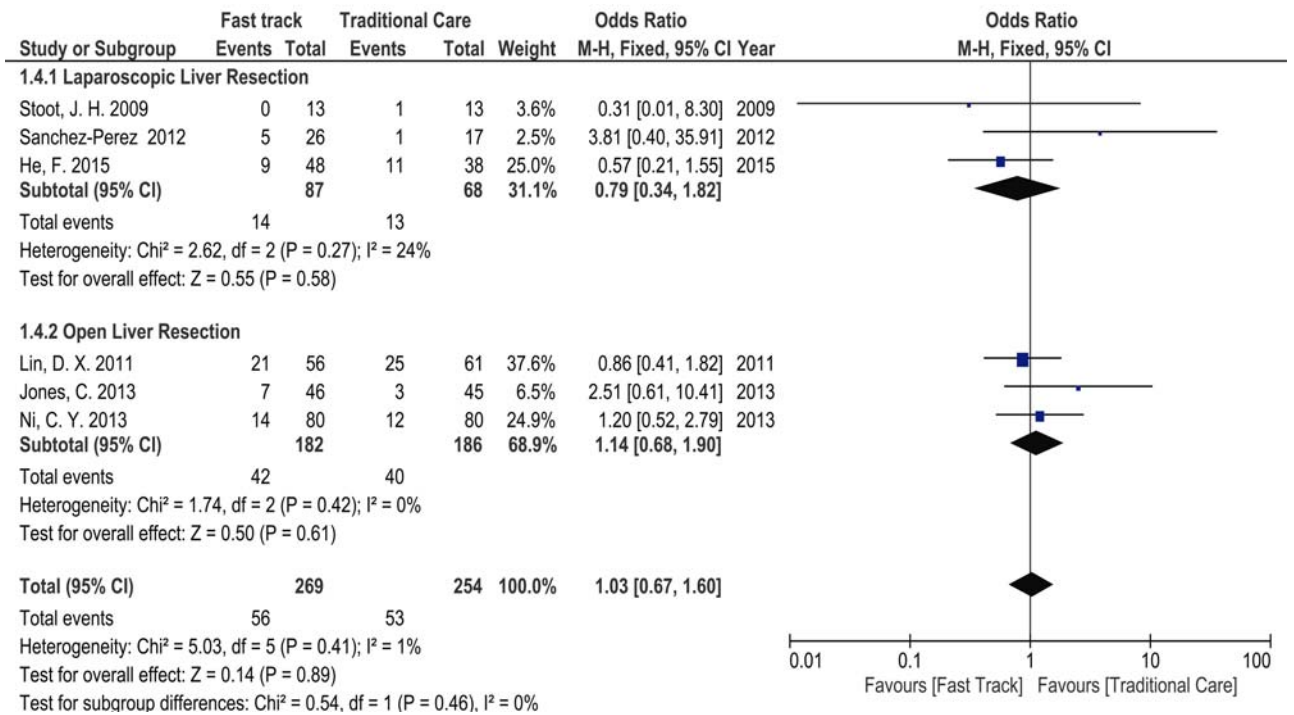
Supplemental Digital Content

Supplemental Digital Content 1, Table that illustrates the indications and extent of liver resection of the included studies.

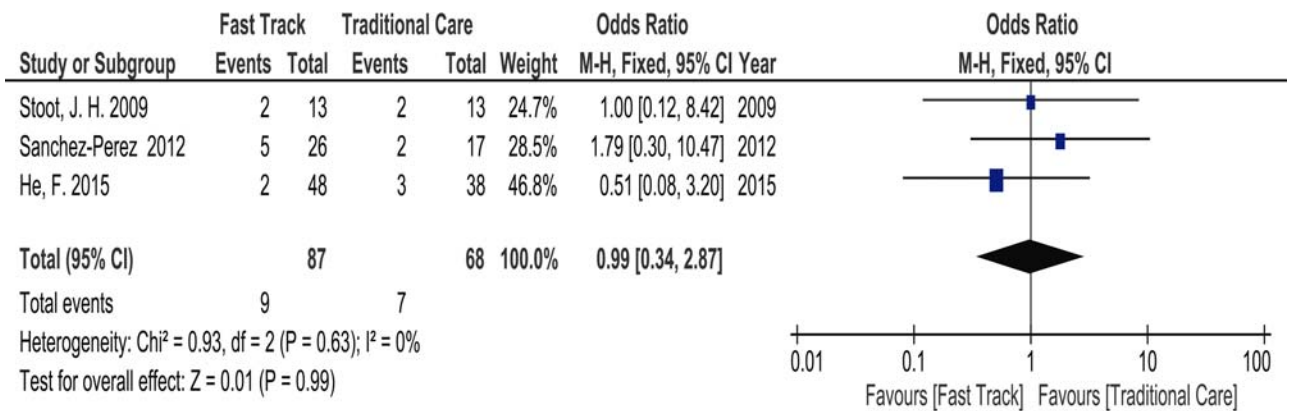
Supplemental Digital Content 2, Figure that illustrates the Forest plot of comparison: Fast Track vs. Traditional Care, outcome: blood loss.



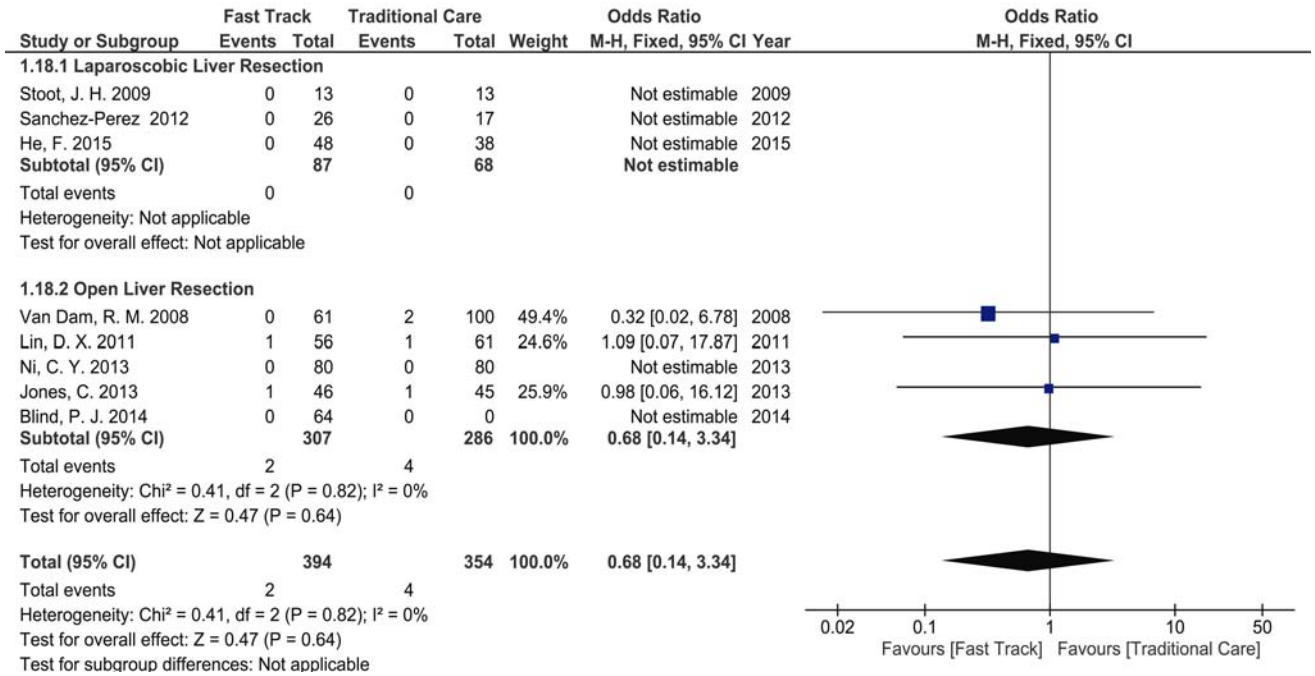
Supplemental Digital Content 3, Figure that illustrates the Forest plot of comparison: Fast Track vs. Traditional Care, outcome: need for blood transfusion.



Supplemental Digital Content 4, Figure that illustrates the Forest plot of comparison: Fast Track vs. Traditional Care, outcome: conversion rate.



Supplemental Digital Content 5, Figure that illustrates the Forest plot of comparison: Fast Track vs. Traditional Care, outcome: mortality rate.



Supplemental Digital Content 6, Figure that illustrates the Forest plot of comparison: Fast Track vs. Traditional Care, outcome: readmission rate.

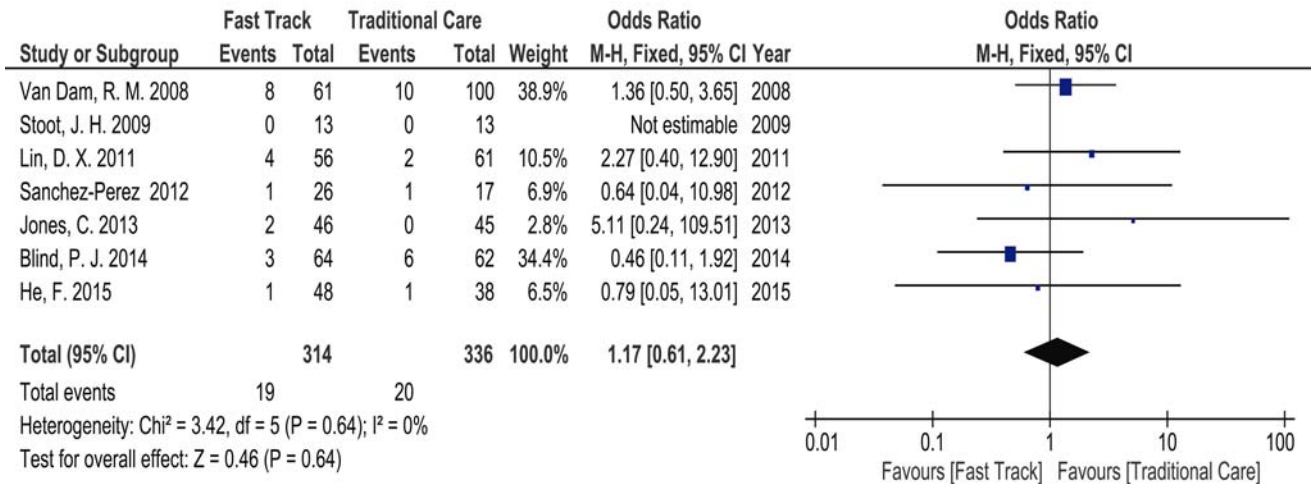


Table 1: Indications and extent of Liver Resection in each study.

	Van Dam, 2008		Stoot, 2009		Lin, 2011		Sanchez-P., 2012		Ni, 2013		Jones, 2013		Blind, 2014		He, 2015			
	FT n=61	TC n=100	FT n=13	TC n=13	FT n=56	TC n=61	FT n=26	TC n=17	FT n=80	TC n=80	FT n=46	TC n=45	FT n=64	TC n=62	FT n=48	TC n=38		
<i>Indications</i>																		
Colorectal Metastasis	51	72	5	2	NA	NA	8	0	0	0	35	26	53	42	20	16		
Other Metastasis	2	4			NA	NA	-	-	-	-	-	-	-	-	-	-	-	
Hepatocellular Carcinoma	4	10			NA	NA	3	3	71	76	9	4	0	0	6	17	11	8
Cholangiocarcinoma					NA	NA	1	0					0	0	0	0	0	0
Benign Lesions	4	14	8	11	NA	NA	14	14	0	0	1	9	5	3	17	14		
<i>Resection</i>																		
segmentectomy	10	21	3	3	13	14	0	0	7	11	25	33	NA	NA	5	2		
Bisegmentectomy	0	0	9	9	17	17	5	4	0	0	0	0	NA	NA	43	36		
Wedge Resection	0	0	0	0	7	9	12	7	0	0	0	0	NA	NA	0	0		
Major Resection	51	79	1	1	19	21	0	0	73	69	21	12	22	26	0	0		
Others	0	0	0	0	0	0	9	6	0	0	0	0	NA	NA	0	0		

NA: Not Available.