

Supporting Information

The discovery of a novel inhibitor of apoptotic protease activating factor-1 (Apaf-1) for ischemic heart: synthesis, activity and target identification

Ying Wang^a, Yang Cao^b, Qing Zhu^c, Xianfeng Gu^{b*}, Yi-Zhun Zhu^{a,d*}

^a Department of Pharmacology, School of Pharmacy and Institute of Biomedical Sciences, Fudan University, Shanghai 201203, China

^b Department of Medicinal Chemistry, School of Pharmacy, Fudan University, Shanghai 201203, China

^c School of Pharmacy, Nantong University, Nantong, 226001, China

^dDepartment of Pharmacology, LYY ^fSchool of Medicine, National University of Singapore

Table of contents

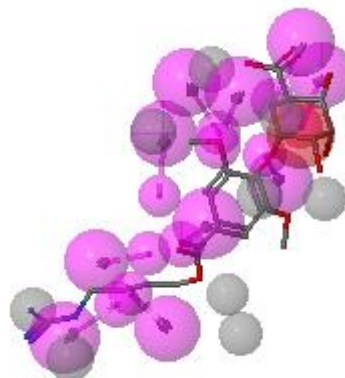
Table S1. The predicted target candidates for kinases of compound ZYZ-488 using PharmMapper server ^[1]	1
Figure S1. ¹ H NMR(600MHz,D ₂ O) for compound ZYZ-488.....	3
Figure S2. ¹³ C NMR(150MHz,D ₂ O) for compound ZYZ-488	4
Figure S3. ¹ H NMR(400MHz, CDCl ₃) for compound 7.....	5
Figure S4. ¹³ C NMR(100MHz, CDCl ₃) for compound 7.....	6
Figure S5. ¹ H NMR (400MHz, D ₂ O) for compound 8.....	7
Figure S6. ¹³ C NMR (150MHz, CDOD ₃) for compound 8.....	8
Figure S7. The effect of ZYZ-488 on expression of Apaf-1 under normoxic or hypoxic condition.	9
Figure S8. Effect of ZYZ-488 on CHK-2 phosphorylation and activation of caspase-8.10	
Figure S9. Silencing effect of siApaf-1.....	10

Table S1. The predicted target candidates for kinases of compound ZYZ-488 using PharmMapper server^[1]

Note that in silico targets screening was performed within an in-house pharmacophore database, named PharmTarget DB, which contains more than 7000 receptor-based pharmacophore models, and only those kinases at the top 300 (about 9%) in the ranked list were extracted and summarized.

Rank ^a	PDB	Target	Fit	Normalized	Molecular and pharmacophore
-------------------	-----	--------	-----	------------	-----------------------------

ID	Name	Score	Fit Score	Aligned Model ^b
Compound ZYZ-488				



22	1Z6T	APAF-1	4.476	0.4069
----	------	--------	-------	--------

^a The ranked list of hit target pharmacophore models, which are sorted by fit score in descending order;

^b The molecule and pharmacophore were aligned by PharmMapper, and the molecule-pharmacophore alignment poses were displayed via a modified version of Jmol applet. The pharmacophore features are schemed by color: Hydrophobic, cyan; Positive, blue; Negative, red; Donor, green, Acceptor, magenta; Aromatic, yellow;

^c The result for compound 2 can be freely accessed and downloaded from the PharmMapper server via

http://59.78.96.61/pharmmapper/result.php?job_id=14099133002

1. Liu, X., et al, *PharmMapper server: a web server for potential drug target identification using pharmacophore mapping approach*. Nucleic acids research, 2010. **38**(suppl 2): p. W609-W614.

Figure S1. ¹H NMR(600MHz,D₂O) for compound ZYZ-488

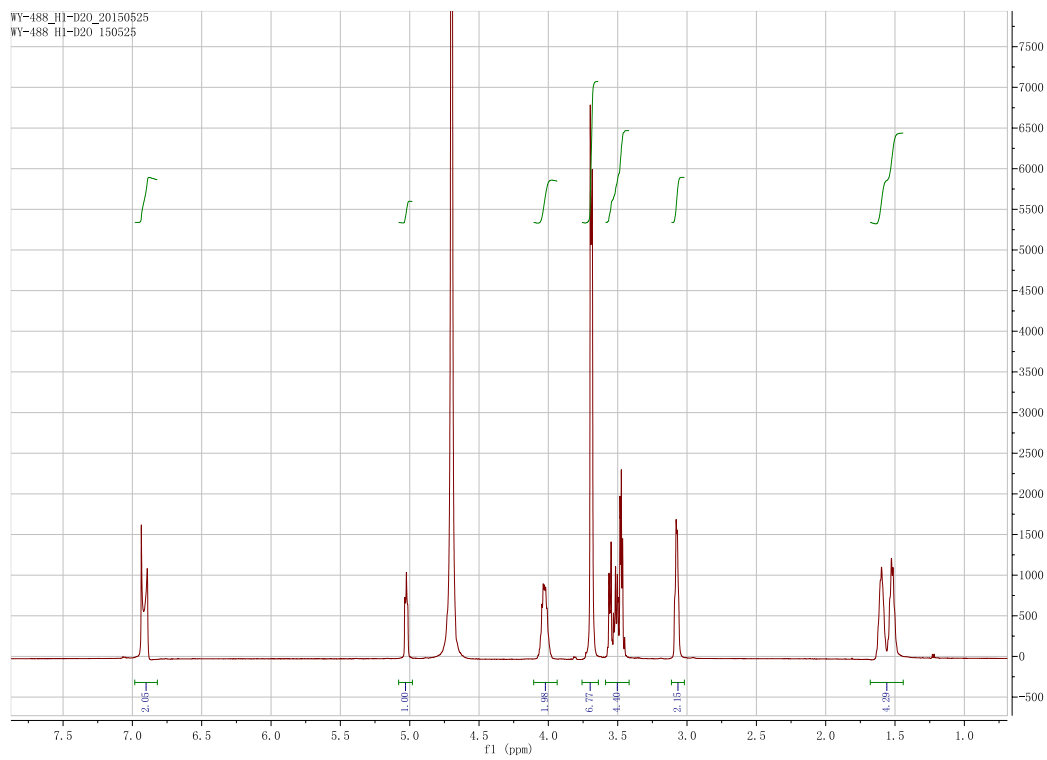


Figure S2. ^{13}C NMR(150MHz, D_2O) for compound ZYZ-488

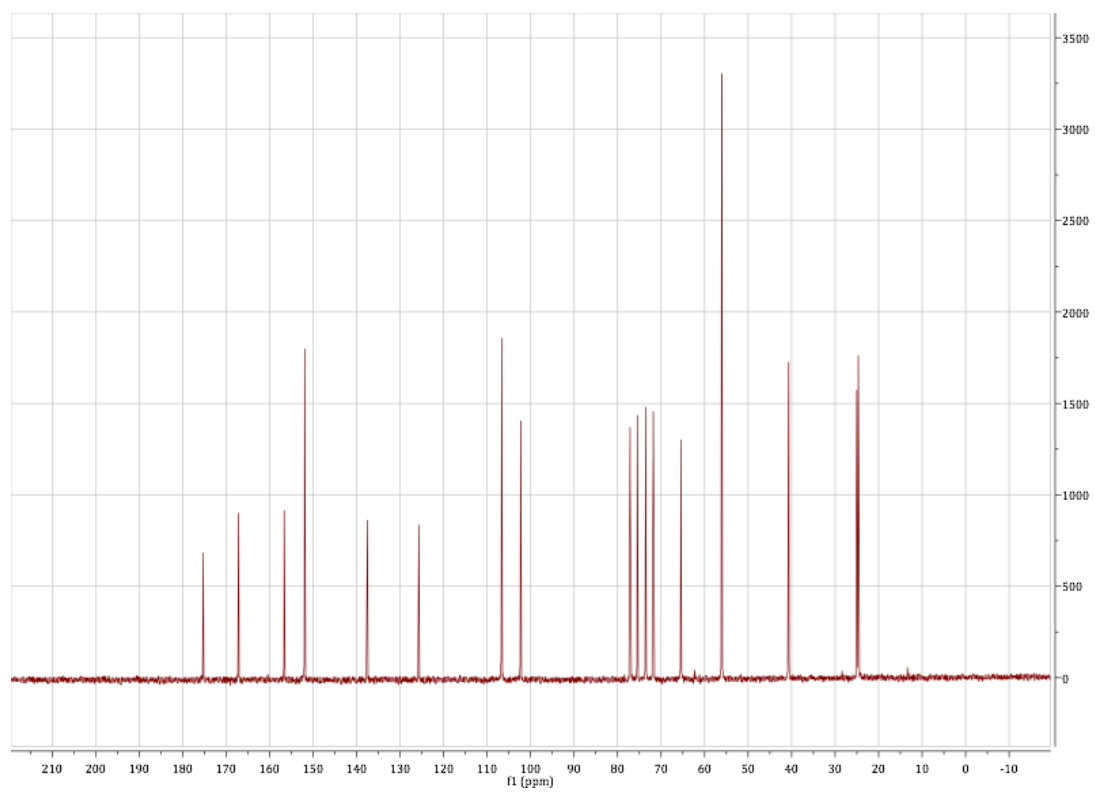


Figure S3. ^1H NMR(400MHz, CDCl_3) for compound 7

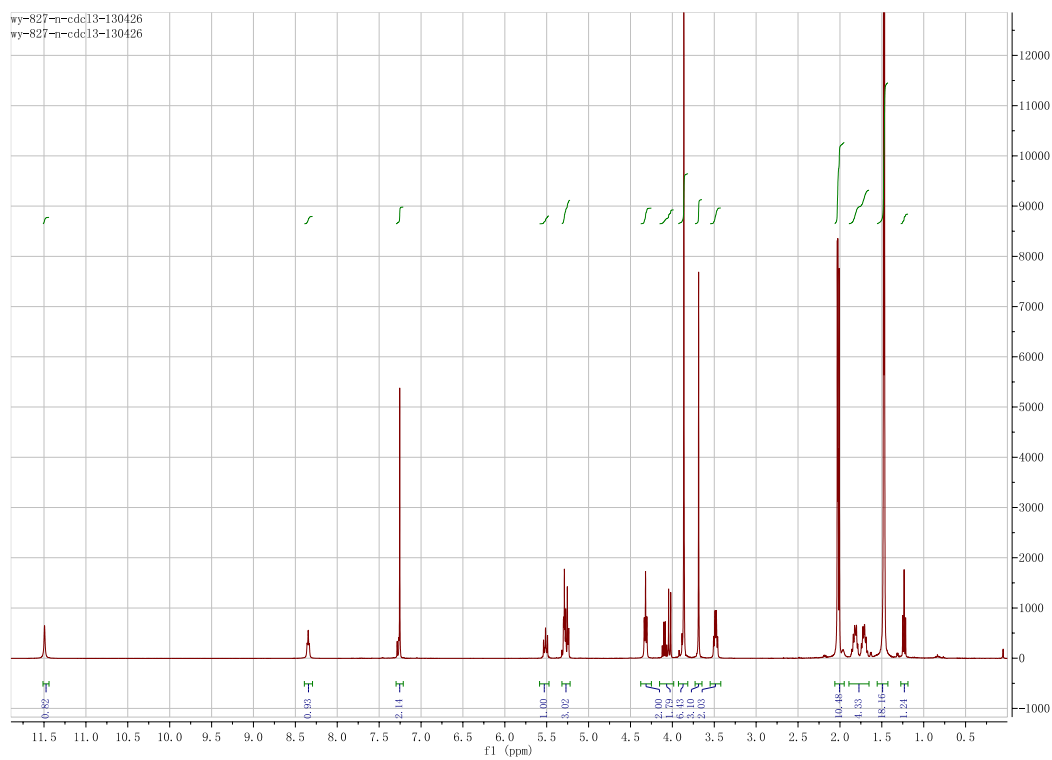


Figure S4. ^{13}C NMR(100MHz, CDCl_3) for compound 7

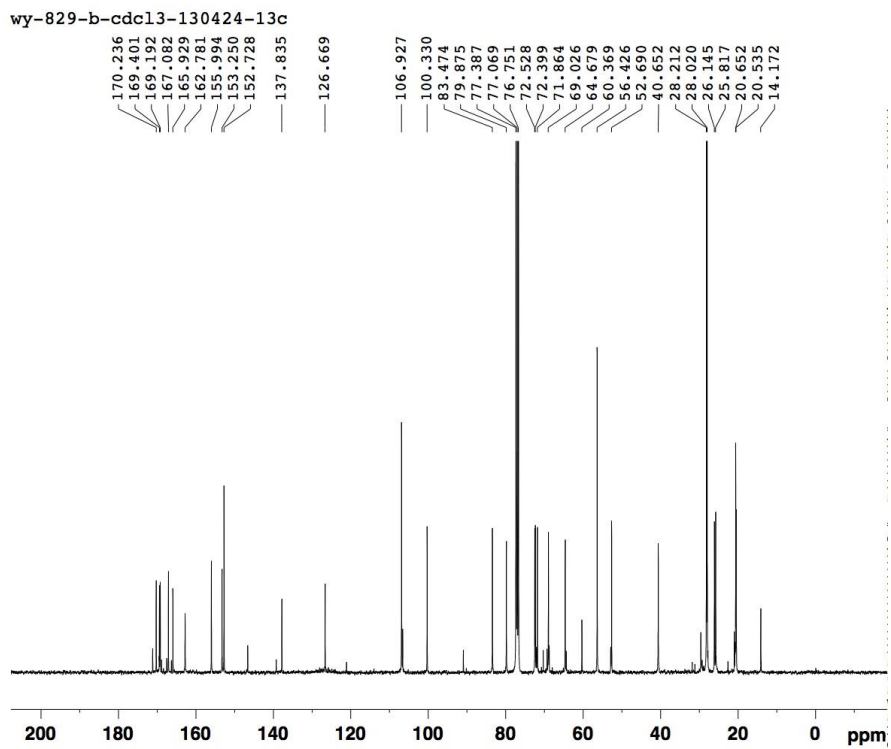


Figure S5. ^1H NMR (400MHz, D_2O) for compound 8

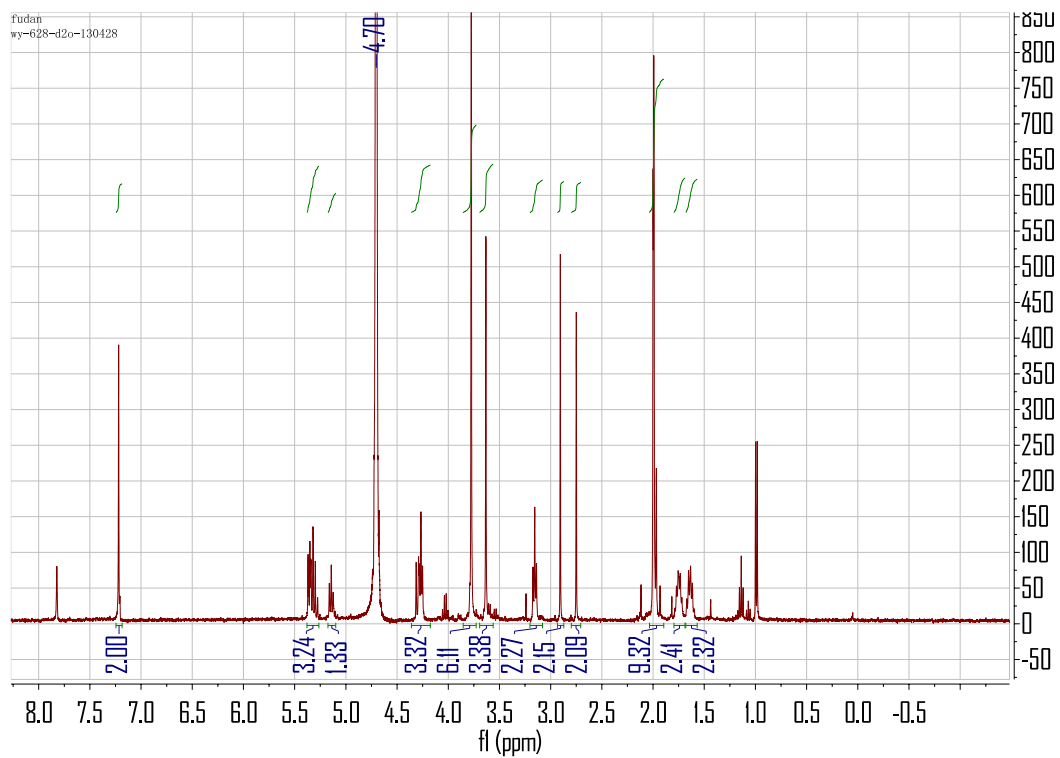


Figure S6. ^{13}C NMR (150MHz, CDOD_3) for compound 8

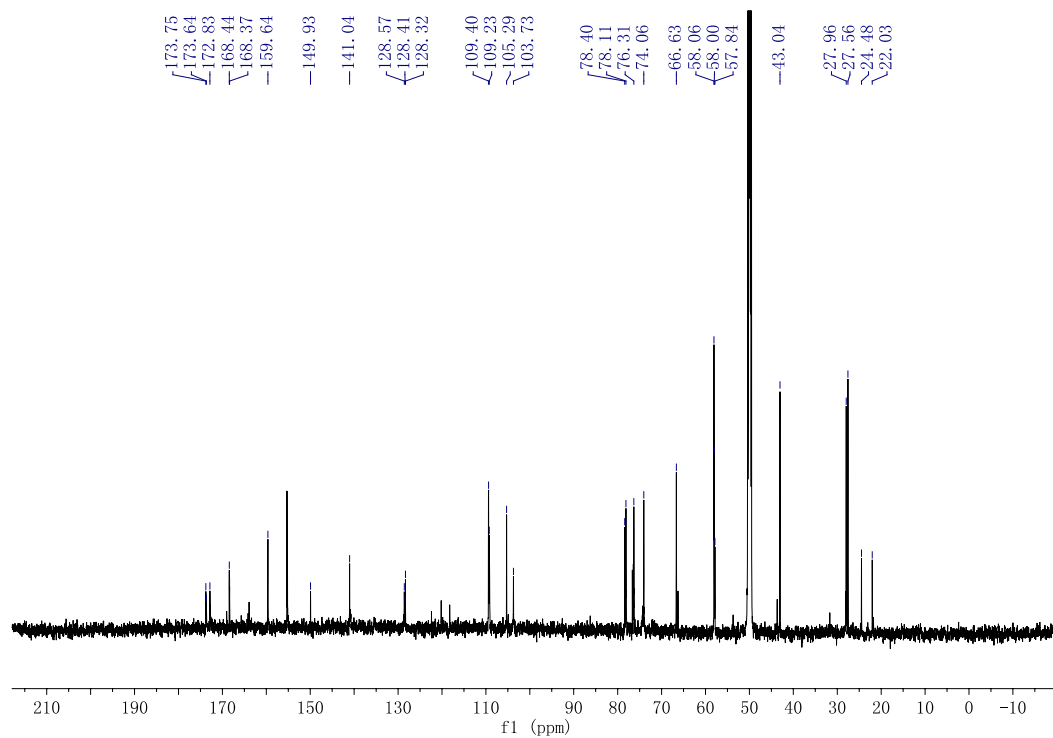


Figure S7. The effect of ZYZ-488 on expression of Apaf-1 under normoxic or hypoxic condition.

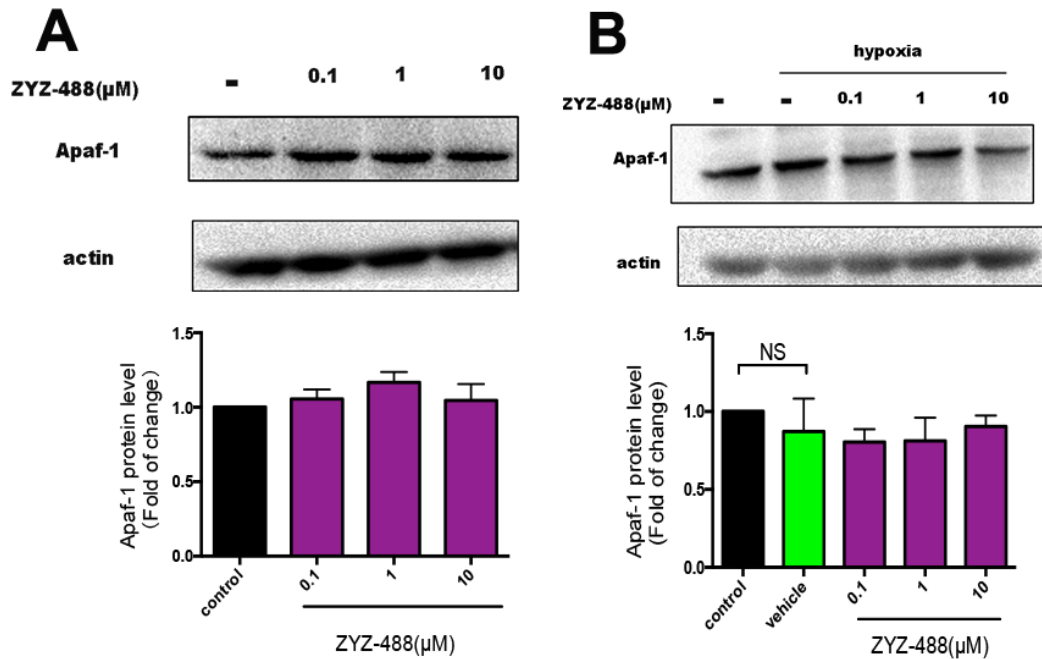


Figure S7. The effect of ZYZ-488 on expression of Apaf-1 under normoxic or hypoxic condition.

H9c2 cells were incubated with indicated concentrations of **ZYZ-488** for 12 h. Then Apaf-1 protein level under normoxic condition was analyzed by Western blot (A). H9c2 cells were culture under hypoxic condition for another 12h to analyze the Apaf-1 protein level under hypoxic condition. Data are the mean \pm S.E.M of results from at least three independent experiments.

Figure S8. Effect of ZYZ-488 on CHK-2 phosphorylation and activation of caspase-8.

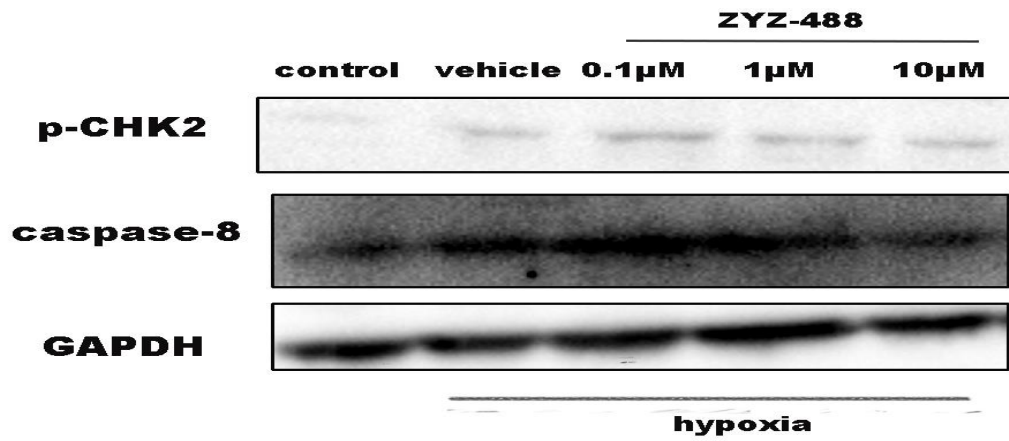


Figure S9. Silencing effect of siApaf-1

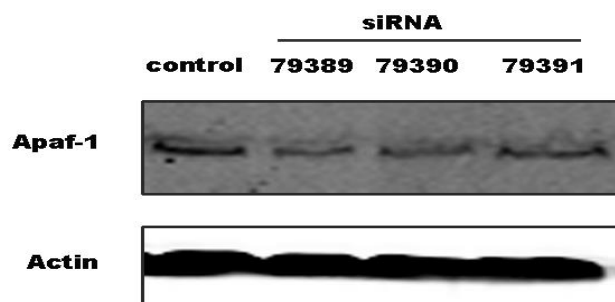


Figure S11. The full-length blots of figure 9.

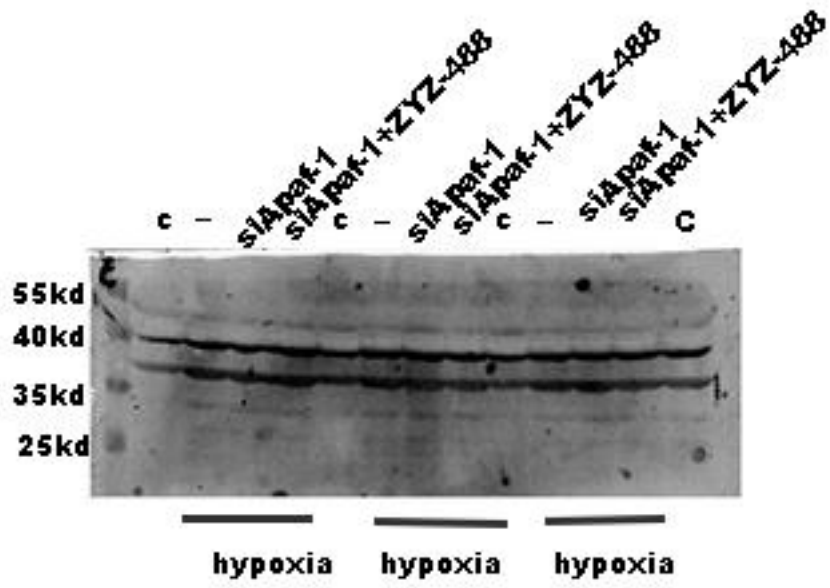


Figure S12. The full-length blots of figure S7 and S8.

