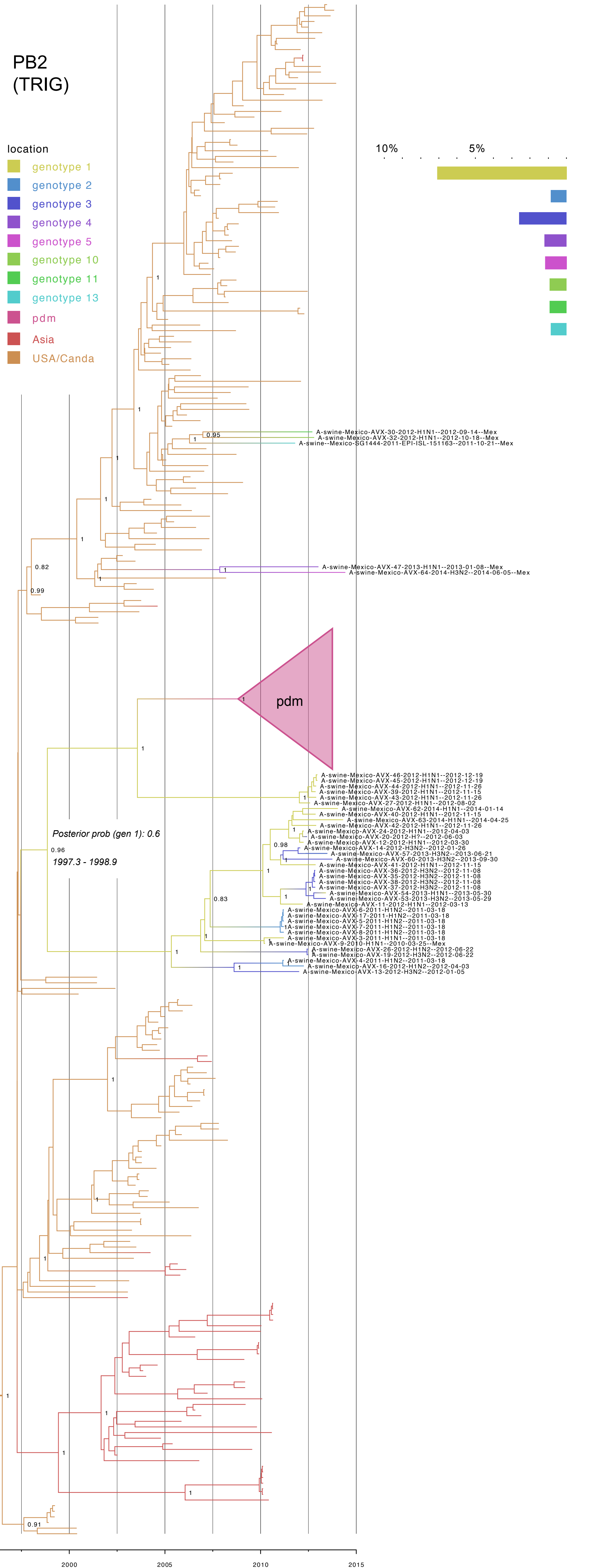
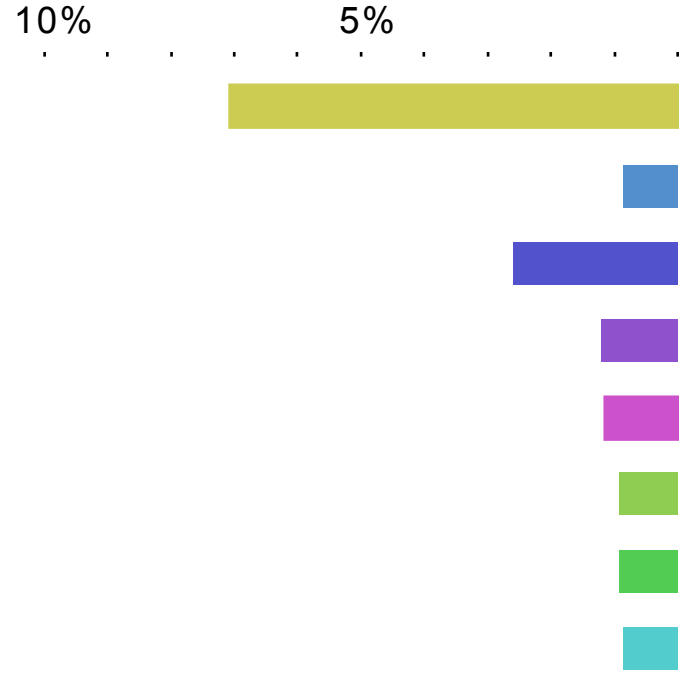


PB2 (TRIG)

- location
- genotype 1
 - genotype 2
 - genotype 3
 - genotype 4
 - genotype 5
 - genotype 10
 - genotype 11
 - genotype 13
 - pdm
 - Asia
 - USA/Canda

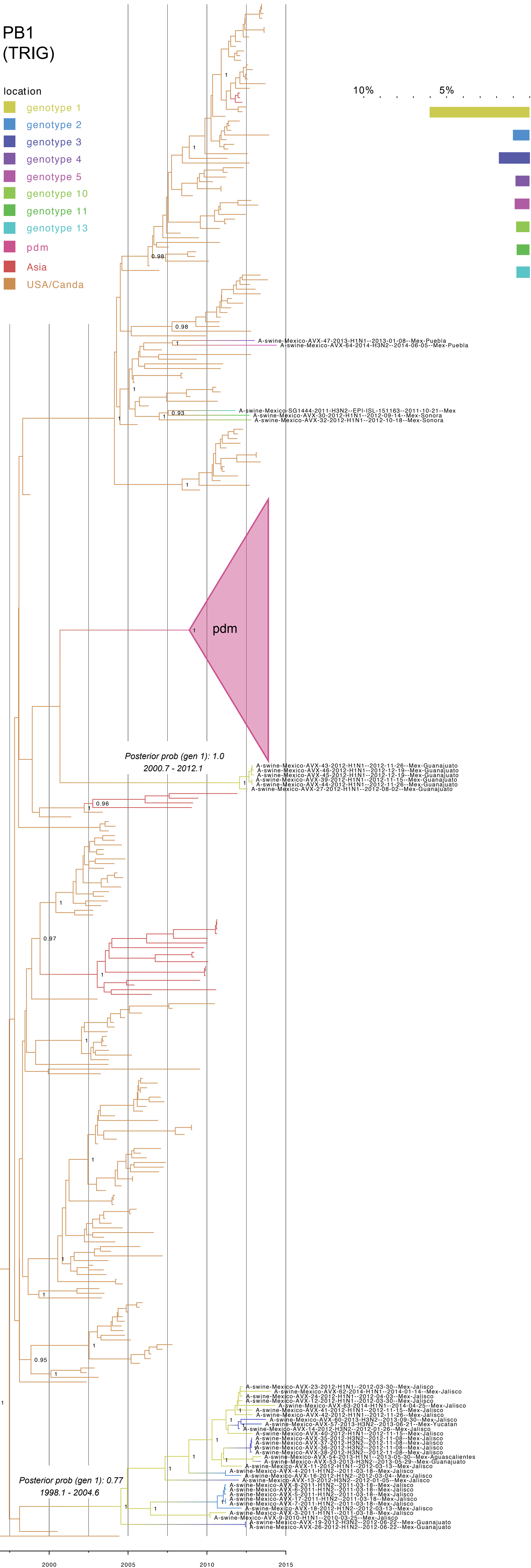


PB1 (TRIG)

location

- genotype 1
- genotype 2
- genotype 3
- genotype 4
- genotype 5
- genotype 10
- genotype 11
- genotype 13
- pdm
- Asia
- USA/Canda

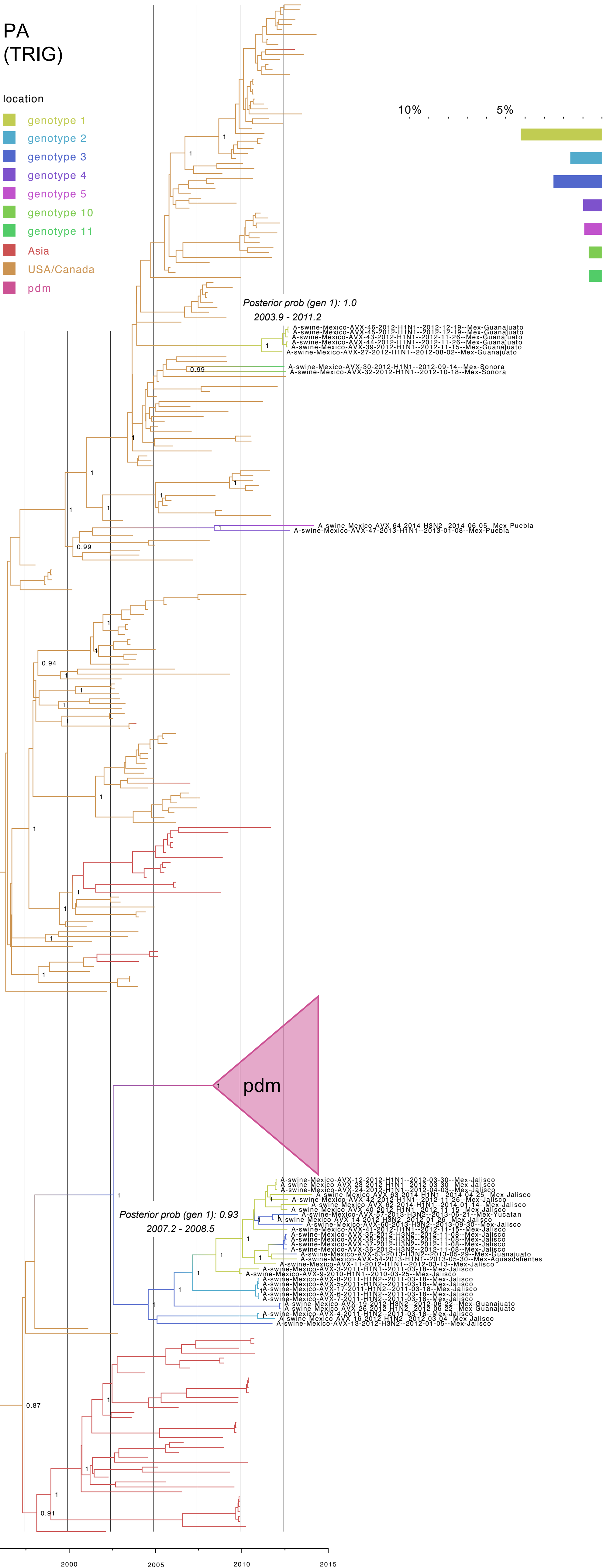
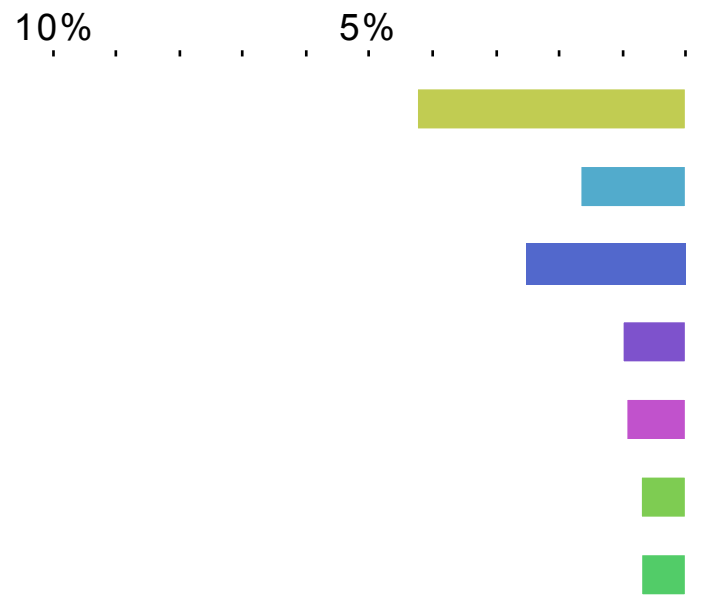
10% 5%



PA (TRIG)

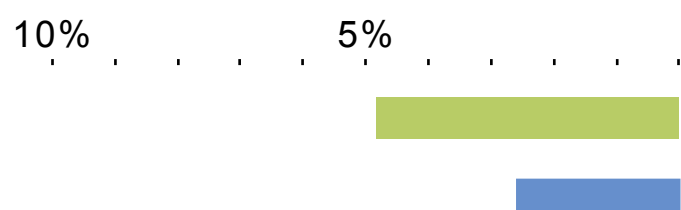
location

- genotype 1
- genotype 2
- genotype 3
- genotype 4
- genotype 5
- genotype 10
- genotype 11
- Asia
- USA/Canada
- pdm



H1 classical

- location
- genotype 1
 - genotype 11
 - pdm
 - Asia
 - USA/Canada



pdm

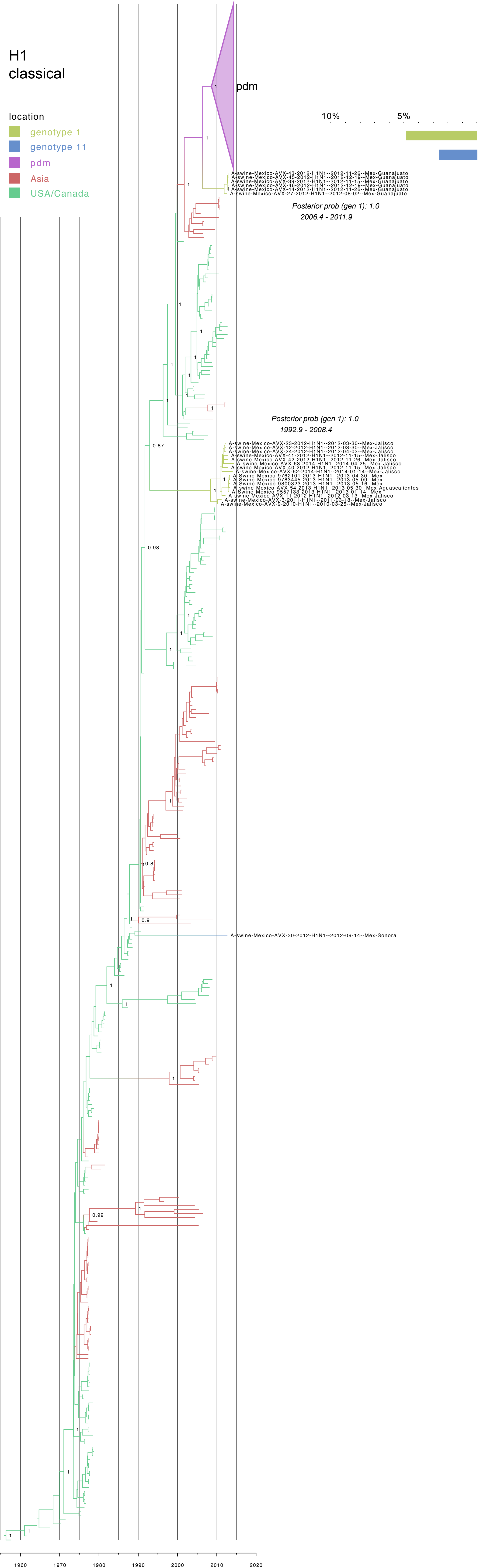
A-swine-Mexico-AVX-43-2012-H1N1--2012-11-26--Mex-Guanajuato
A-swine-Mexico-AVX-45-2012-H1N1--2012-12-19--Mex-Guanajuato
A-swine-Mexico-AVX-39-2012-H1N1--2012-11-15--Mex-Guanajuato
A-swine-Mexico-AVX-46-2012-H1N1--2012-12-19--Mex-Guanajuato
A-swine-Mexico-AVX-44-2012-H1N1--2012-11-26--Mex-Guanajuato
A-swine-Mexico-AVX-27-2012-H1N1--2012-08-02--Mex-Guanajuato

Posterior prob (gen 1): 1.0
2006.4 - 2011.9

Posterior prob (gen 1): 1.0
1992.9 - 2008.4

A-swine-Mexico-AVX-23-2012-H1N1--2012-03-30--Mex-Jalisco
A-swine-Mexico-AVX-12-2012-H1N1--2012-03-30--Mex-Jalisco
A-swine-Mexico-AVX-24-2012-H1N1--2012-04-03--Mex-Jalisco
A-swine-Mexico-AVX-41-2012-H1N1--2012-11-15--Mex-Jalisco
A-swine-Mexico-AVX-42-2012-H1N1--2012-11-26--Mex-Jalisco
A-swine-Mexico-AVX-65-2014-H1N1--2014-04-25--Mex-Jalisco
A-swine-Mexico-AVX-40-2012-H1N1--2012-11-15--Mex-Jalisco
A-swine-Mexico-AVX-62-2014-H1N1--2014-01-14--Mex-Jalisco
A-swine-Mexico-9762101-2013-H1N1--2013-04-30--Mex
A-swine-Mexico-9783445-2013-H1N1--2013-05-09--Mex
A-swine-Mexico-9800323-2013-H1N1--2013-05-16--Mex
A-swine-Mexico-AVX-54-2013-H1N1--2013-05-30--Mex-Aguascalientes
A-swine-Mexico-9557133-2013-H1N1--2013-01-14--Mex
A-swine-Mexico-AVX-11-2012-H1N1--2012-03-13--Mex-Jalisco
A-swine-Mexico-AVX-3-2011-H1N1--2011-03-18--Mex-Jalisco
A-swine-Mexico-AVX-9-2010-H1N1--2010-03-25--Mex-Jalisco

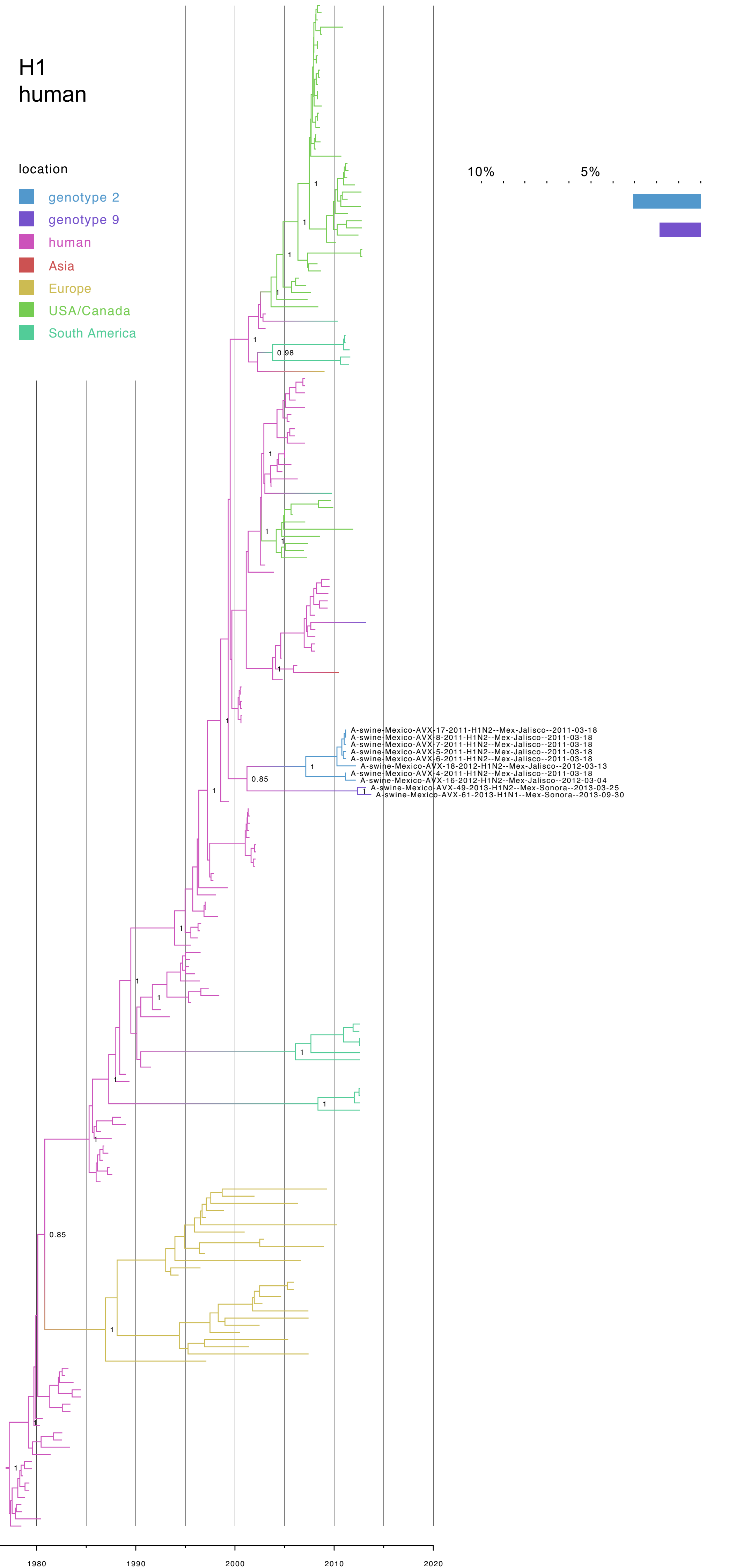
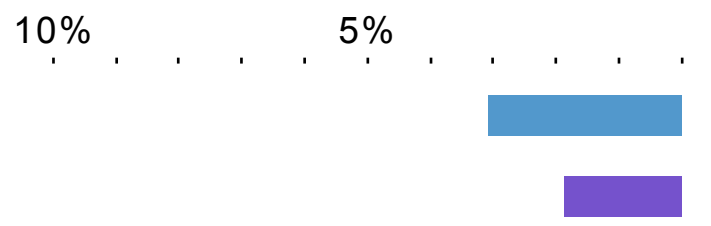
A-swine-Mexico-AVX-30-2012-H1N1--2012-09-14--Mex-Sonora



H1 human

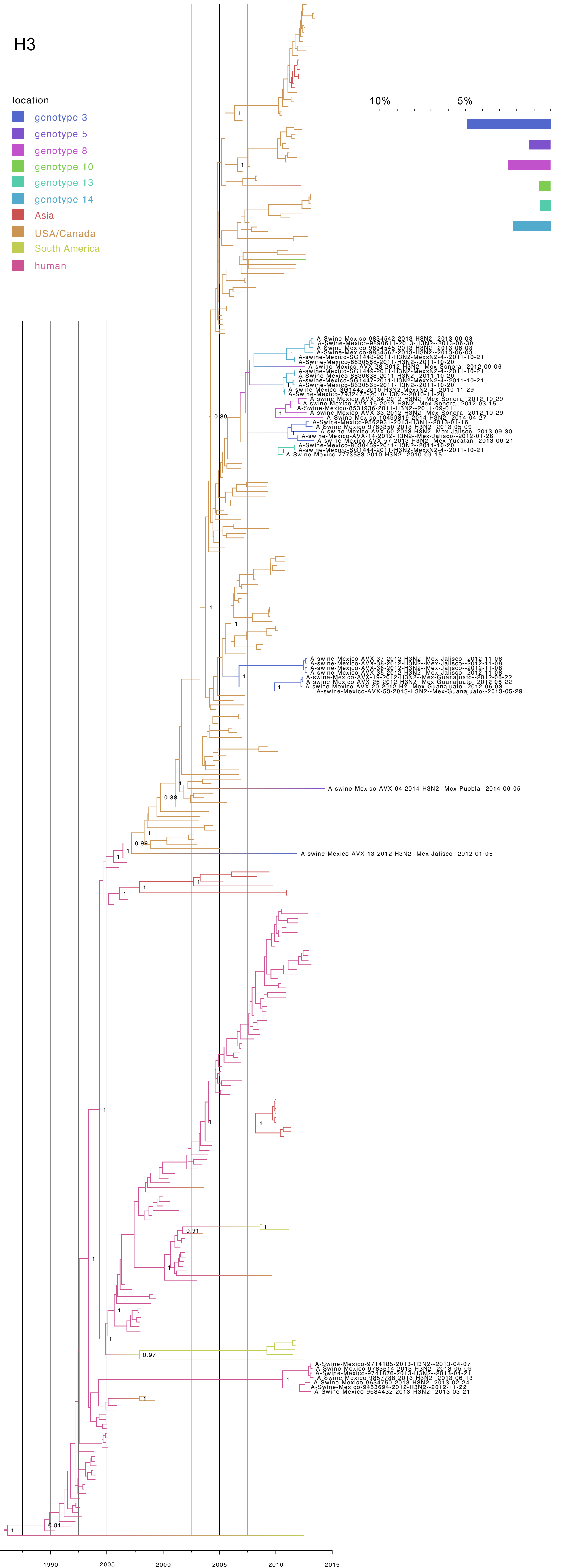
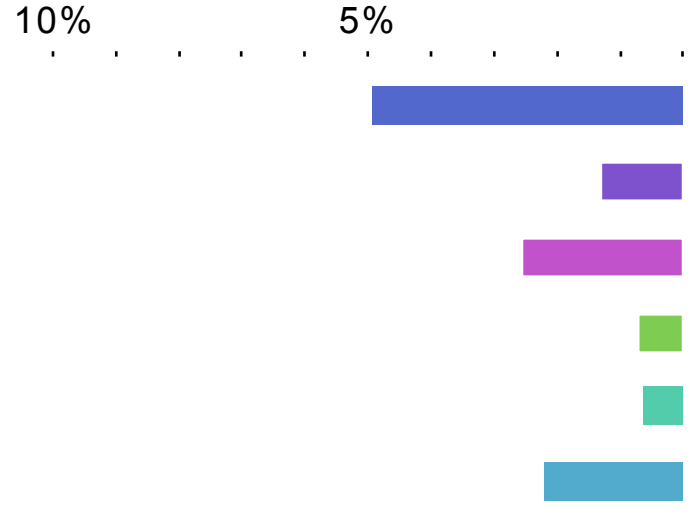
location

- genotype 2
- genotype 9
- human
- Asia
- Europe
- USA/Canada
- South America



H3

- location
- genotype 3
 - genotype 5
 - genotype 8
 - genotype 10
 - genotype 13
 - genotype 14
 - Asia
 - USA/Canada
 - South America
 - human



A-Swine-Mexico-9834542-2013-H3N2--2013-06-03
A-Swine-Mexico-9890611-2013-H3N2--2013-06-30
A-Swine-Mexico-9834545-2013-H3N2--2013-06-03
A-Swine-Mexico-9834567-2013-H3N2--2013-06-03
A-swine-Mexico-SG1448-2011-H3N2-MexxN2-4--2011-10-21
A-Swine-Mexico-8630588-2011-H3N2--2011-10-20
A-swine-Mexico-AVX-28-2012-H3N2-Mex-Sonora--2012-09-06
A-swine-Mexico-SG1449-2011-H3N2-MexxN2-4--2011-10-21
A-Swine-Mexico-8630638-2011-H3N2--2011-10-20
A-swine-Mexico-SG1447-2011-H3N2-MexxN2-4--2011-10-21
A-Swine-Mexico-8630565-2011-H3N2--2011-10-20
A-swine-Mexico-SG1442-2010-H3N2-MexxN2-4--2010-11-29
A-Swine-Mexico-7932475-2010-H3N2--2010-11-28
A-swine-Mexico-AVX-34-2012-H3N2-Mex-Sonora--2012-10-29
A-swine-Mexico-AVX-15-2012-H3N2-Mex-Sonora--2012-03-15
A-swine-Mexico-8531936-2011-H3N2--2011-09-01
A-swine-Mexico-AVX-33-2012-H3N2-Mex-Sonora--2012-10-29
A-Swine-Mexico-10499819-2014-H3N2--2014-04-27
A-Swine-Mexico-9562931-2013-H3N1--2013-01-16
A-Swine-Mexico-9783350-2013-H3N2--2013-05-09
A-swine-Mexico-AVX-60-2013-H3N2-Mex-Jalisco--2013-09-30
A-swine-Mexico-AVX-14-2012-H3N2-Mex-Jalisco--2012-01-26
A-swine-Mexico-AVX-57-2013-H3N2-Mex-Yucatan--2013-06-21
A-Swine-Mexico-8630458-2011-H3N2--2011-10-20
A-swine-Mexico-SG1444-2011-H3N2-MexxN2-4--2011-10-21
A-Swine-Mexico-7773583-2010-H3N2--2010-09-15

A-swine-Mexico-AVX-37-2012-H3N2-Mex-Jalisco--2012-11-08
A-swine-Mexico-AVX-38-2012-H3N2-Mex-Jalisco--2012-11-08
A-swine-Mexico-AVX-36-2012-H3N2-Mex-Jalisco--2012-11-08
A-swine-Mexico-AVX-35-2012-H3N2-Mex-Jalisco--2012-11-08
A-swine-Mexico-AVX-19-2012-H3N2-Mex-Guanajuato--2012-06-22
A-swine-Mexico-AVX-26-2012-H3N2-Mex-Guanajuato--2012-06-22
A-Swine-Mexico-8630458-2011-H3N2--2011-10-20
A-swine-Mexico-AVX-53-2013-H3N2-Mex-Guanajuato--2013-05-29

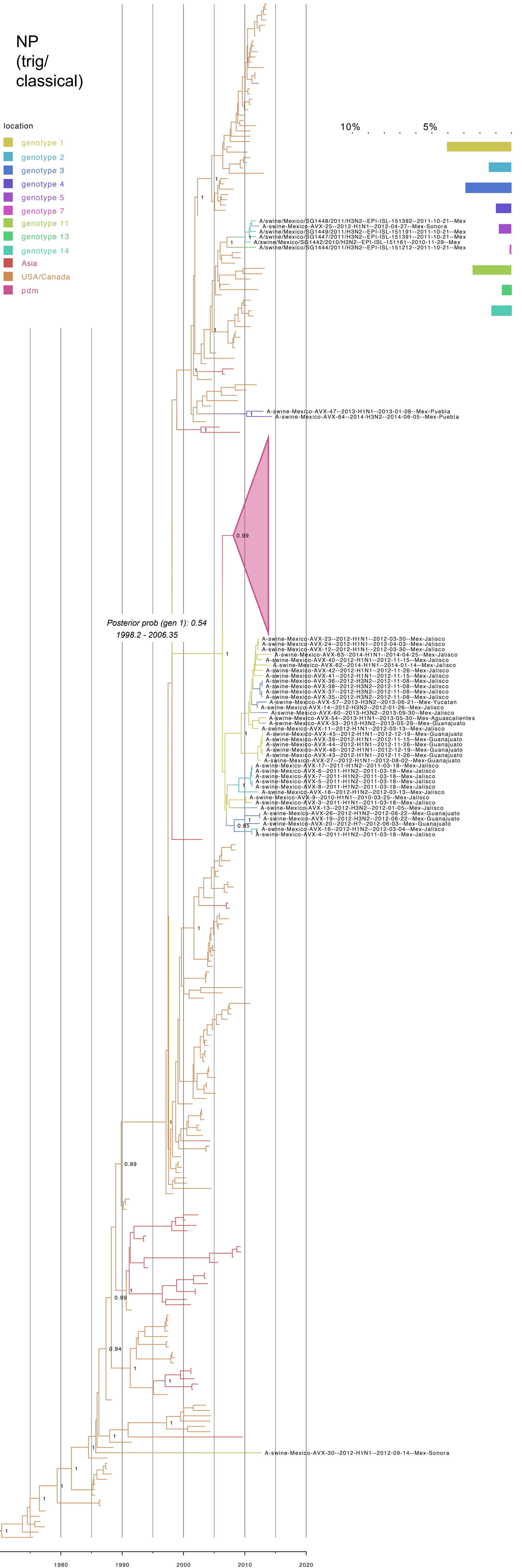
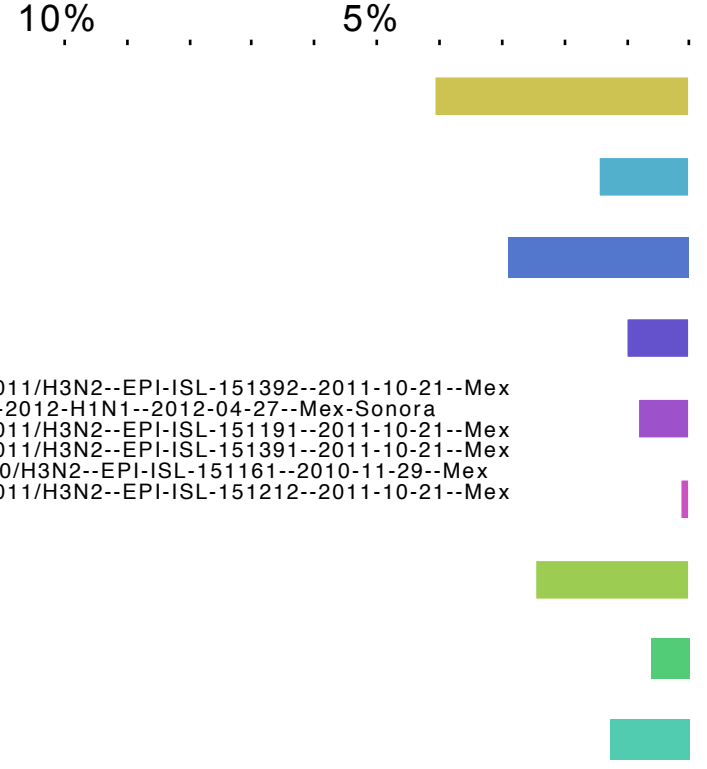
A-swine-Mexico-AVX-64-2014-H3N2-Mex-Puebla--2014-06-05

A-swine-Mexico-AVX-13-2012-H3N2-Mex-Jalisco--2012-01-05

A-Swine-Mexico-9714185-2013-H3N2--2013-04-07
A-Swine-Mexico-9783350-2013-H3N2--2013-05-09
A-Swine-Mexico-9741876-2013-H3N2--2013-04-21
A-Swine-Mexico-9857788-2013-H3N2--2013-06-13
A-Swine-Mexico-9634750-2013-H3N2--2013-02-24
A-Swine-Mexico-9456394-2012-H3N2--2012-11-22
A-Swine-Mexico-9684432-2013-H3N2--2013-03-21

NP (trig/ classical)

- location
- genotype 1
 - genotype 2
 - genotype 3
 - genotype 4
 - genotype 5
 - genotype 7
 - genotype 11
 - genotype 13
 - genotype 14
 - Asia
 - USA/Canada
 - pdm



Posterior prob (gen 1): 0.54
1998.2 - 2006.35

- A/swine-Mexico-AVX-23-2012-H1N1-2012-03-30-Mex-Jalisco
- A/swine-Mexico-AVX-24-2012-H1N1-2012-04-03-Mex-Jalisco
- A/swine-Mexico-AVX-12-2012-H1N1-2012-03-30-Mex-Jalisco
- A/swine-Mexico-AVX-63-2014-H1N1-2014-04-25-Mex-Jalisco
- A/swine-Mexico-AVX-40-2012-H1N1-2012-11-15-Mex-Jalisco
- A/swine-Mexico-AVX-62-2014-H1N1-2014-01-14-Mex-Jalisco
- A/swine-Mexico-AVX-42-2012-H1N1-2012-11-26-Mex-Jalisco
- A/swine-Mexico-AVX-41-2012-H1N1-2012-11-15-Mex-Jalisco
- A/swine-Mexico-AVX-36-2012-H3N2-2012-11-08-Mex-Jalisco
- A/swine-Mexico-AVX-38-2012-H3N2-2012-11-08-Mex-Jalisco
- A/swine-Mexico-AVX-37-2012-H3N2-2012-11-08-Mex-Jalisco
- A/swine-Mexico-AVX-35-2012-H3N2-2012-11-08-Mex-Jalisco
- A/swine-Mexico-AVX-57-2013-H3N2-2013-06-21-Mex-Yucatan
- A/swine-Mexico-AVX-14-2012-H3N2-2012-01-26-Mex-Jalisco
- A/swine-Mexico-AVX-60-2013-H3N2-2013-09-30-Mex-Jalisco
- A/swine-Mexico-AVX-54-2013-H1N1-2013-05-30-Mex-Aguascalientes
- A/swine-Mexico-AVX-53-2013-H3N2-2013-05-29-Mex-Guanajuato
- A/swine-Mexico-AVX-11-2012-H1N1-2012-03-13-Mex-Jalisco
- A/swine-Mexico-AVX-45-2012-H1N1-2012-12-19-Mex-Guanajuato
- A/swine-Mexico-AVX-39-2012-H1N1-2012-11-15-Mex-Guanajuato
- A/swine-Mexico-AVX-44-2012-H1N1-2012-11-26-Mex-Guanajuato
- A/swine-Mexico-AVX-46-2012-H1N1-2012-12-19-Mex-Guanajuato
- A/swine-Mexico-AVX-43-2012-H1N1-2012-11-26-Mex-Guanajuato
- A/swine-Mexico-AVX-27-2012-H1N1-2012-08-02-Mex-Guanajuato
- A/swine-Mexico-AVX-17-2011-H1N2-2011-03-18-Mex-Jalisco
- A/swine-Mexico-AVX-6-2011-H1N2-2011-03-18-Mex-Jalisco
- A/swine-Mexico-AVX-7-2011-H1N2-2011-03-18-Mex-Jalisco
- A/swine-Mexico-AVX-5-2011-H1N2-2011-03-18-Mex-Jalisco
- A/swine-Mexico-AVX-8-2011-H1N2-2011-03-18-Mex-Jalisco
- A/swine-Mexico-AVX-18-2012-H1N2-2012-03-13-Mex-Jalisco
- A/swine-Mexico-AVX-9-2010-H1N1-2010-03-25-Mex-Jalisco
- A/swine-Mexico-AVX-3-2011-H1N1-2011-03-18-Mex-Jalisco
- A/swine-Mexico-AVX-13-2012-H3N2-2012-01-05-Mex-Jalisco
- A/swine-Mexico-AVX-26-2012-H1N2-2012-06-22-Mex-Guanajuato
- A/swine-Mexico-AVX-19-2012-H3N2-2012-06-22-Mex-Guanajuato
- A/swine-Mexico-AVX-20-2012-H7-2012-06-03-Mex-Guanajuato
- A/swine-Mexico-AVX-16-2012-H1N2-2012-03-04-Mex-Jalisco
- A/swine-Mexico-AVX-4-2011-H1N2-2011-03-18-Mex-Jalisco

A/swine-Mexico-AVX-30-2012-H1N1-2012-09-14-Mex-Sonora

1980 1990 2000 2010 2020

N2

location

- genotype 2
- genotype 3
- genotype 6
- genotype 8
- genotype 9
- genotype 10
- genotype 12
- genotype 13
- genotype 14
- Asia
- Europe
- USA/Canada
- South America
- human

