

Supplementary Data

Chromatograms of rifampicin (RIF), desacetyl-rifampicin (Des-RIF), ciprofloxacin (CIP) and fusidic acid (FUS), and the deuterated internal standards, RIF-d₄, Des-RIF-d₄, CIP-d₈, and FUS-d₆, in standard and patient dried blood spot (DBS) samples

Validation and application of a dried blood spot assay for biofilm-active antibiotics commonly used for treatment of prosthetic implant infections

Ben Knippenberg,¹ Madhu Page-Sharp,² Sam Salman,³ Ben Clark,¹ John Dyer,¹ Kevin T. Batty,² Timothy M. E. Davis,³ Laurens Manning⁴

1. *Department of Infectious Diseases, Fremantle Hospital, Fremantle, Western Australia*
2. *School of Pharmacy, Curtin University, Bentley, Western Australia*
3. *School of Medicine and Pharmacology, University of Western Australia, Fremantle Hospital, Fremantle, Western Australia*
4. *School of Medicine and Pharmacology, University of Western Australia, Harry Perkins Research Institute, Fiona Stanley Hospital, Murdoch, Western Australia*

Corresponding author

Dr Laurens Manning, School of Medicine and Pharmacology, University of Western Australia, Harry Perkins Research Institute, Fiona Stanley Hospital, PO Box 404, Bull Creek 6149, Western Australia, Australia. Tel +61 8 61611156. Email:

laurens.manning@uwa.edu.au

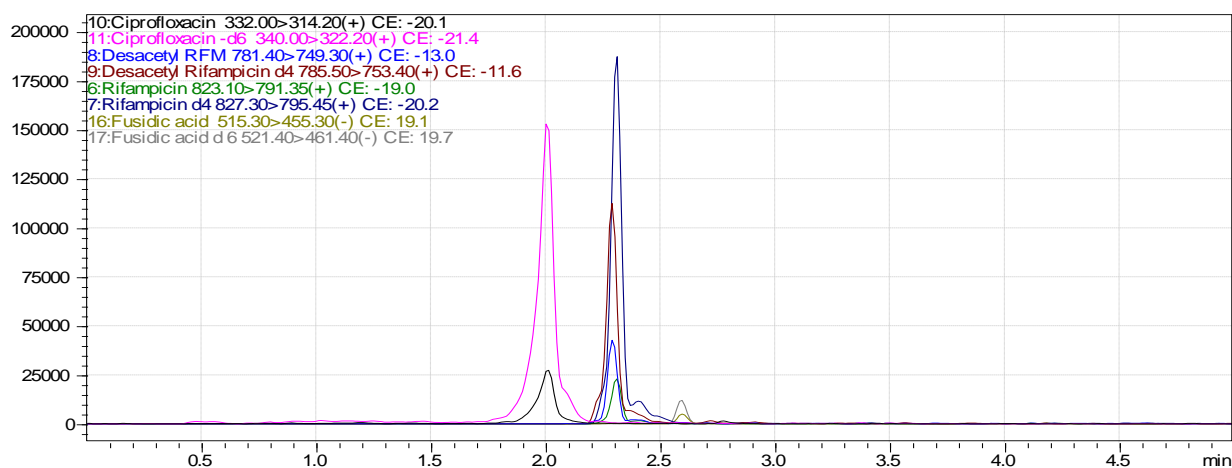


Figure S1. Chromatogram of rifampicin (RIF; 1 µg/mL), desacetyl-rifampicin (Des-RIF; 1 µg/mL), ciprofloxacin (CIP; 1 µg/mL) and fusidic acid (FUS; 10 µg/mL), and the deuterated internal standards, RIF-d₄, Des-RIF-d₄, CIP-d₈, and FUS-d₆, in a standard DBS sample. Background noise in blank DBS was <850 AU. Retention time (X-axis) is minutes.

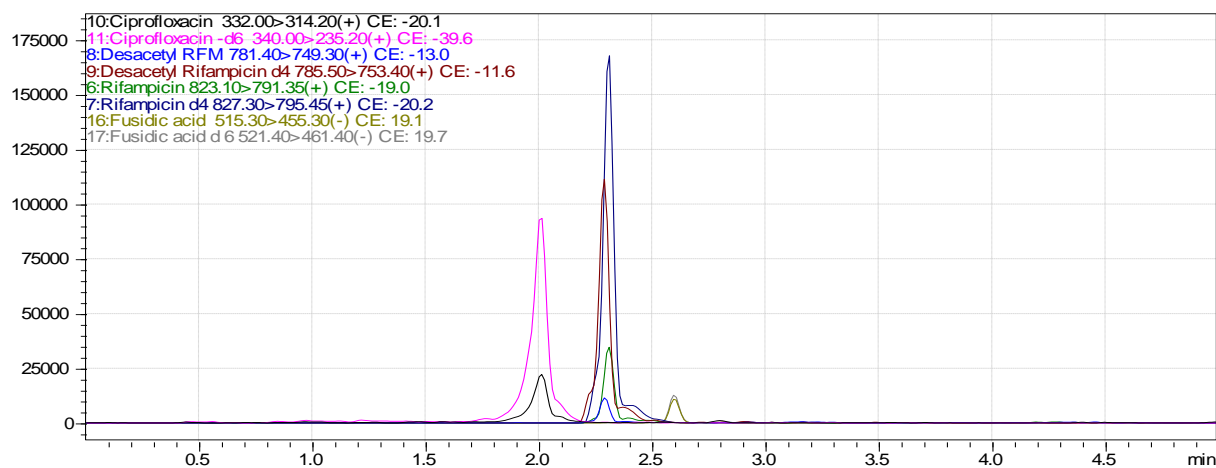


Figure S2. Chromatogram of a typical patient DBS showing rifampicin (RIF; 1.95 µg/mL), desacetyl-rifampicin (Des-RIF; 0.35 µg/mL), ciprofloxacin (CIP; 0.76 µg/mL) and fusidic acid (FUS; 28.3 µg/mL).

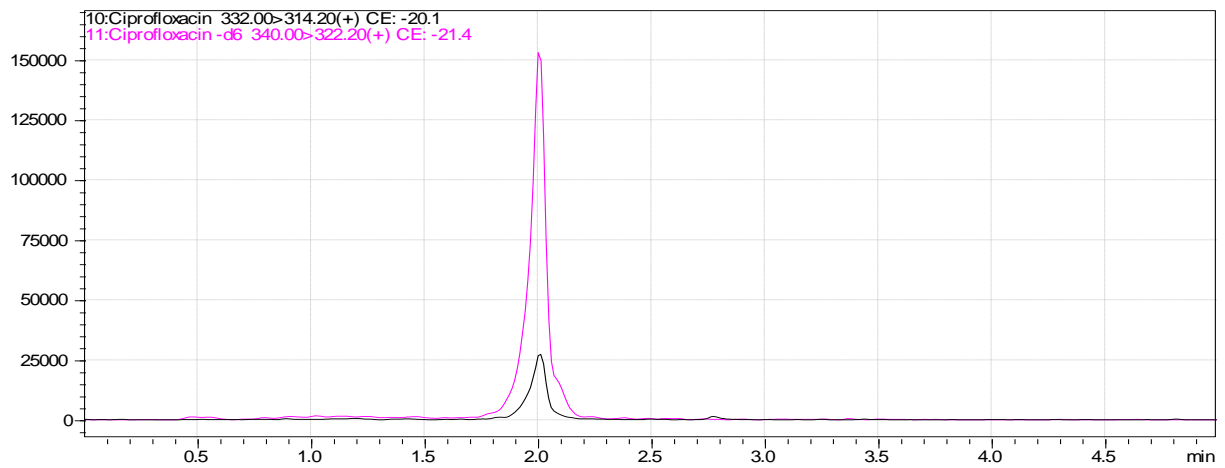
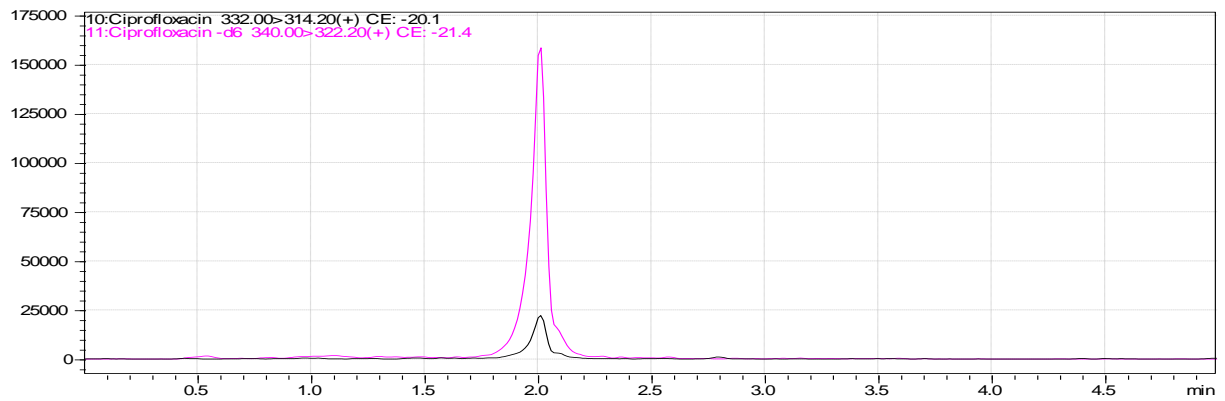
A**B**

Figure S3. Individual drug chromatograms of CIP in standard DBS (A; 1 $\mu\text{g}/\text{mL}$) and a typical patient DBS (B: 0.76 $\mu\text{g}/\text{mL}$).

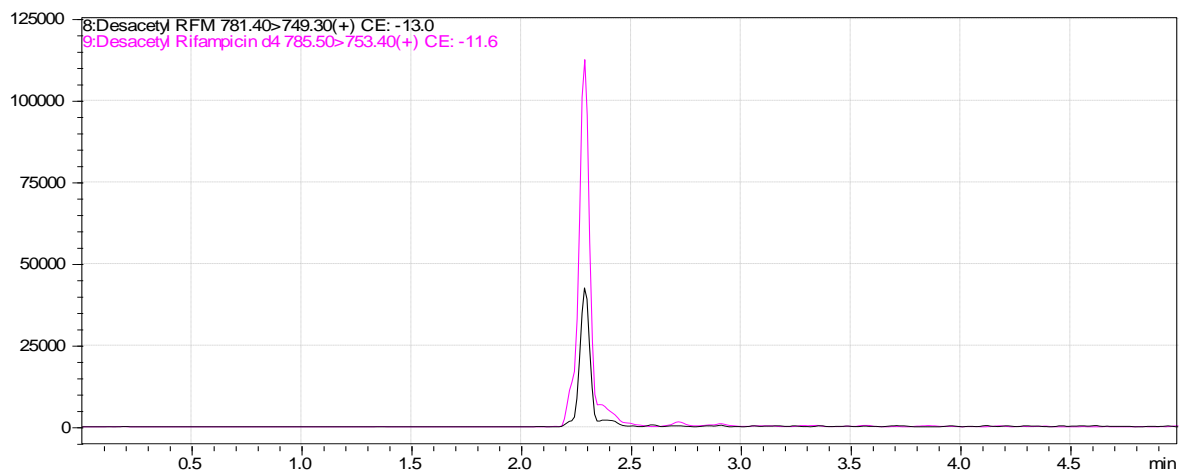
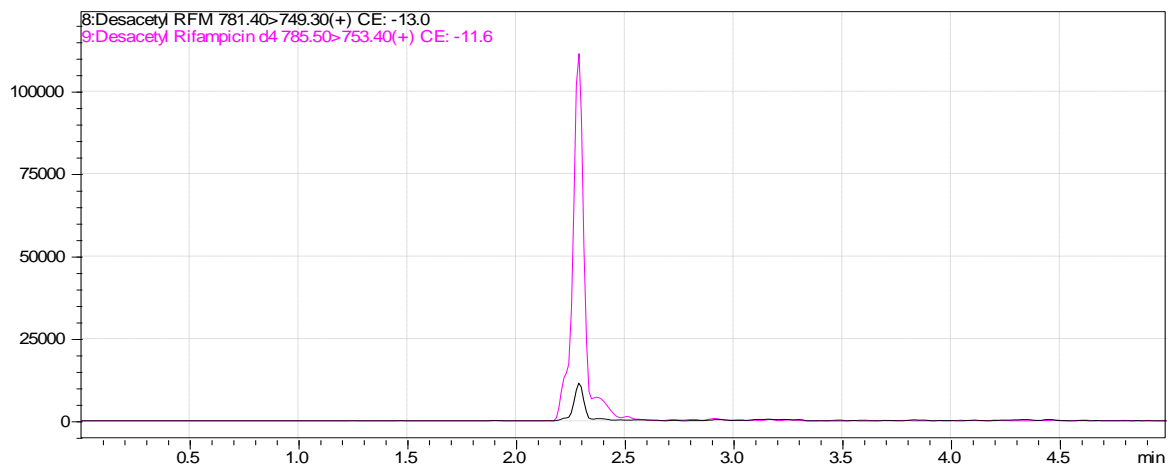
A**B**

Figure S4. Individual drug chromatograms of Des-RIF in standard DBS (A; 1 $\mu\text{g/mL}$) and a typical patient DBS (B: 0.35 $\mu\text{g/mL}$).

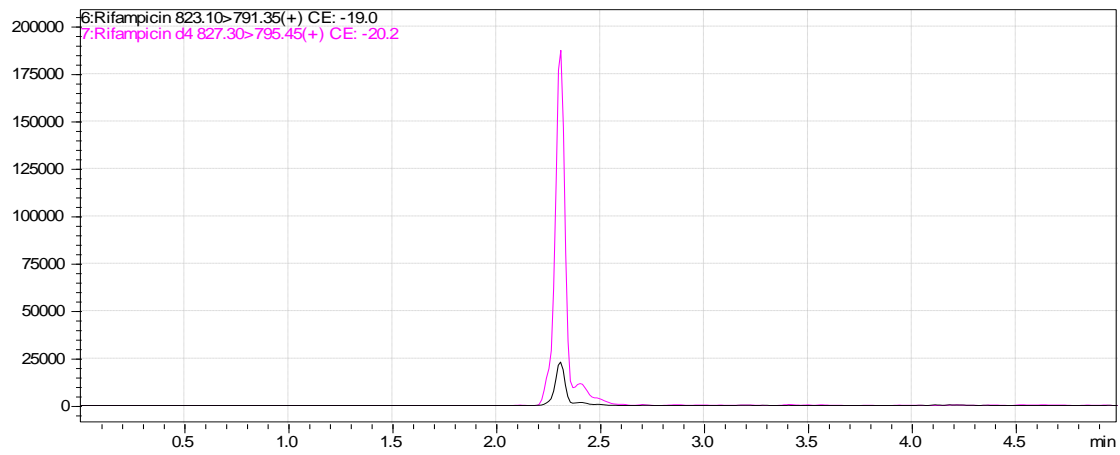
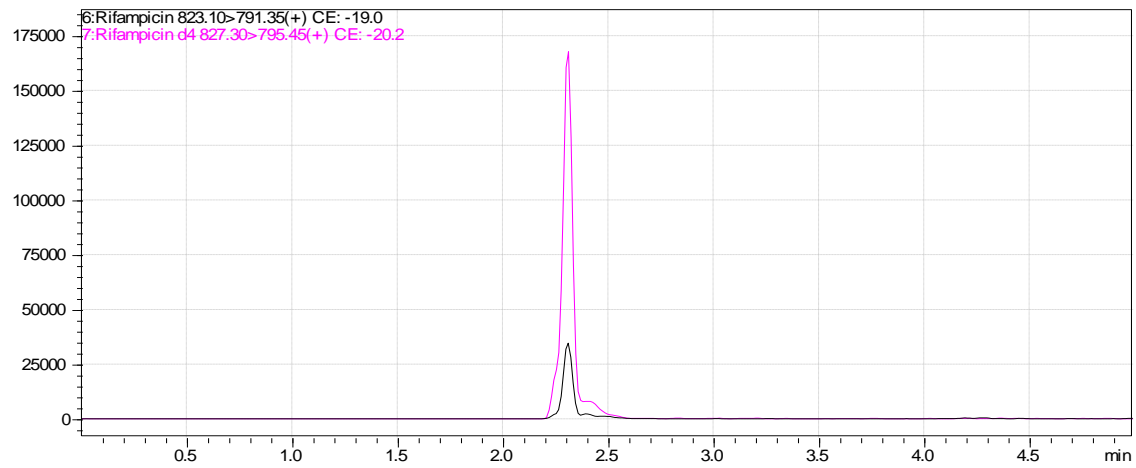
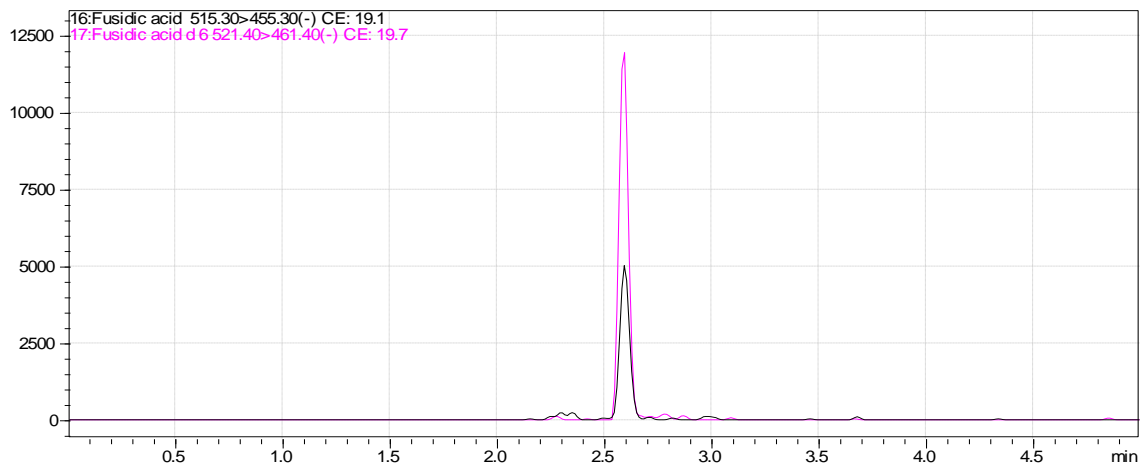
A**B**

Figure S5. Individual drug chromatograms of RIF in standard DBS (A; 1 µg/mL) and a typical patient DBS (B: 1.95 µg/mL).

A



B

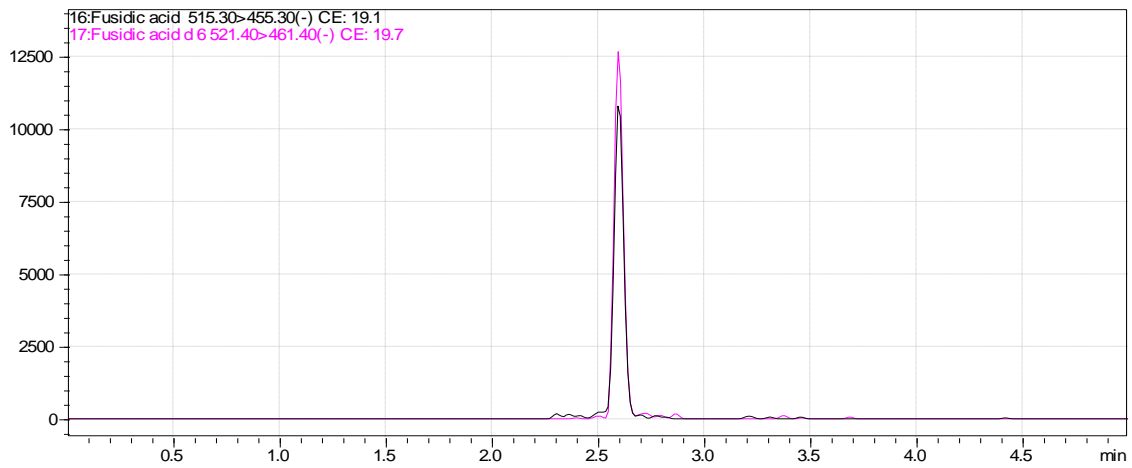


Figure S6. Individual drug chromatograms of FUS in standard DBS (A; 10 $\mu\text{g}/\text{mL}$) and a typical patient DBS (B: 28 $\mu\text{g}/\text{mL}$).