

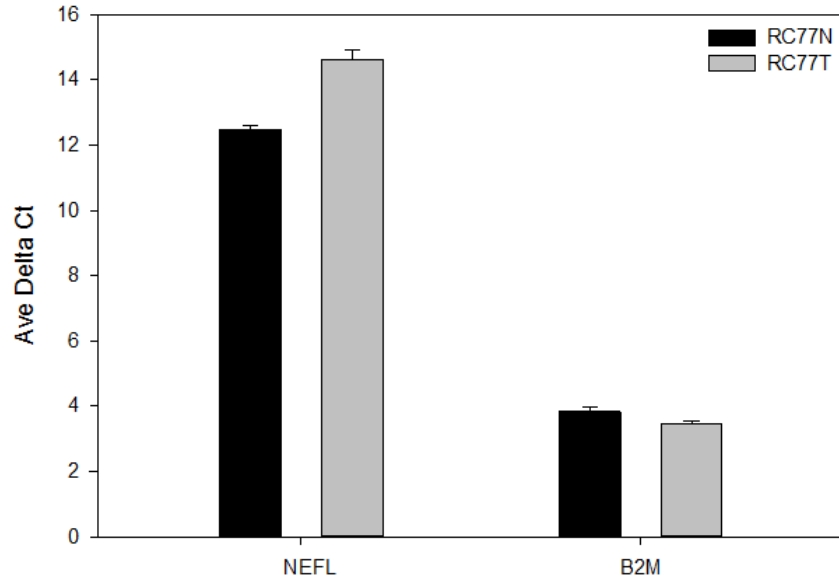
Supplemental Figure Legends

Supplemental Figure 1. RT-PCR showing the $\Delta\Delta C_t$ values for NEFL in RC77N/E and RC77T/E cells. There is a significant down regulation of NEFL gene in the malignant RC77T/E cells compared to the non-malignant RC77N/E cells.

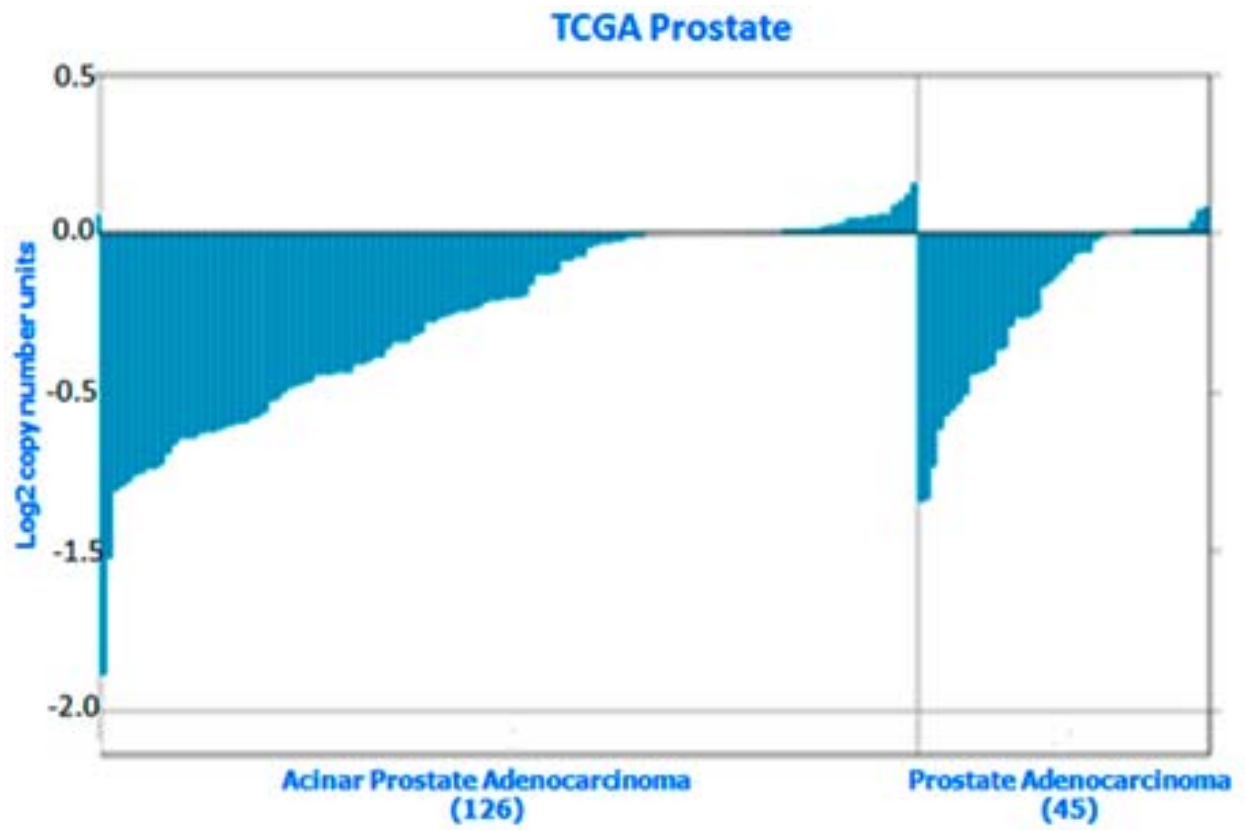
Supplemental Figure 2. The NEFL gene copy numbers in human prostate tissue samples in The Cancer Genome Atlas (TCGA). The copy numbers of the gene are significantly lower in a majority of the cases from both acinar prostate adenocarcinoma and prostate adenocarcinoma cases.

Supplemental Figure 3. Regulatory network of genes by IPA. The network of the genes was derived from the forty-seven differentially transcribed genes. The genes that are depicted in color present the differentially transcribed genes whereas the genes depicted in white were no change in transcribed genes. Red and shades of red represent upregulated genes whereas green represent down regulated genes. Full lines imply a direct action between two nodes, while the dotted lines illustrate an indirect relationship between two nodes. Blue lines represent inhibition whereas mauve lines represent activation.

Supplemental Figure 1.



Supplemental Figure 2.



Supplemental Figure 3.

