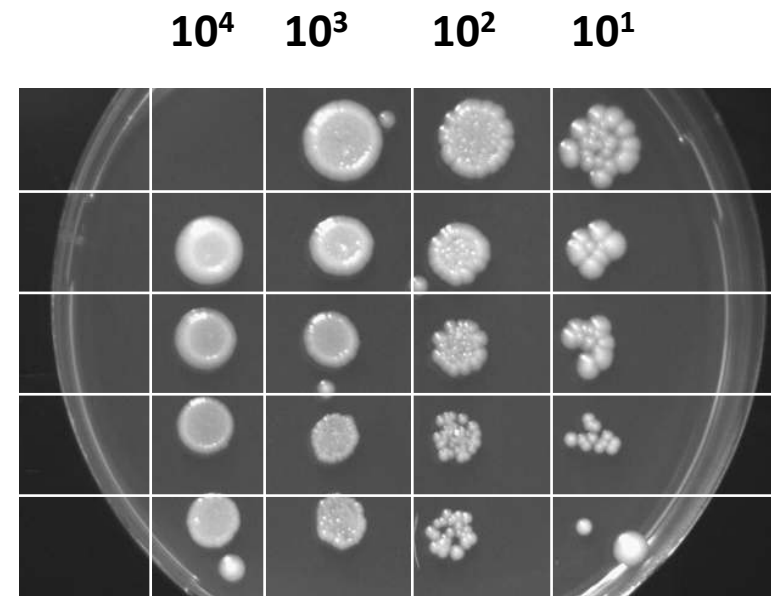
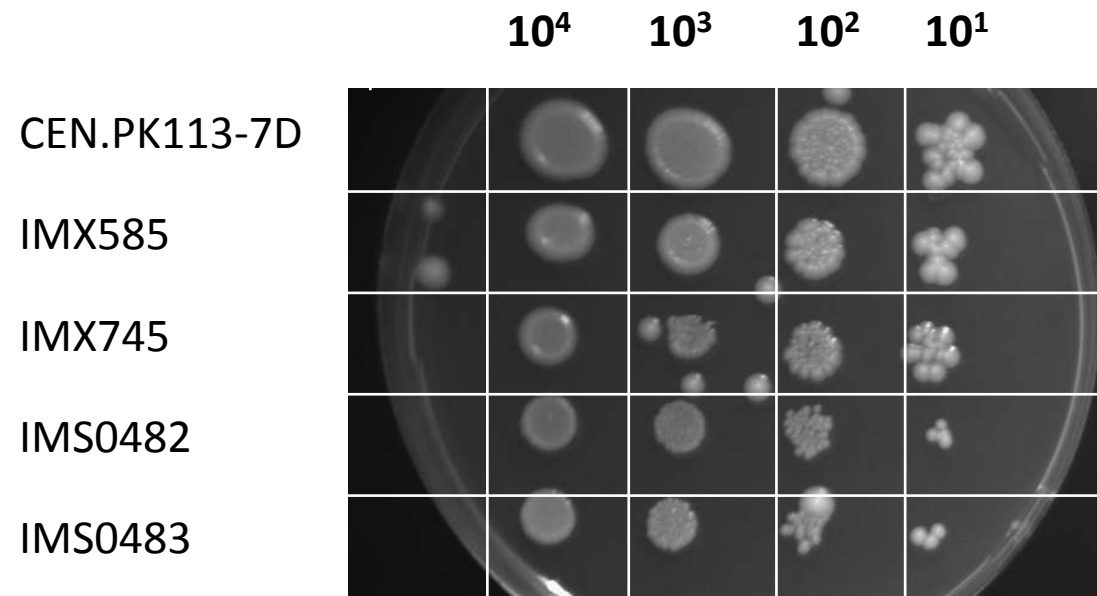


**Strains spotted on:** 20150218  
**Photo('s) taken on:** 20150222  
**Medium:** SM + 20 g L<sup>-1</sup> glucose  
**Used for figure:** 3



**Strains spotted on:** 20150218

**Photo('s) taken on:** 20150222

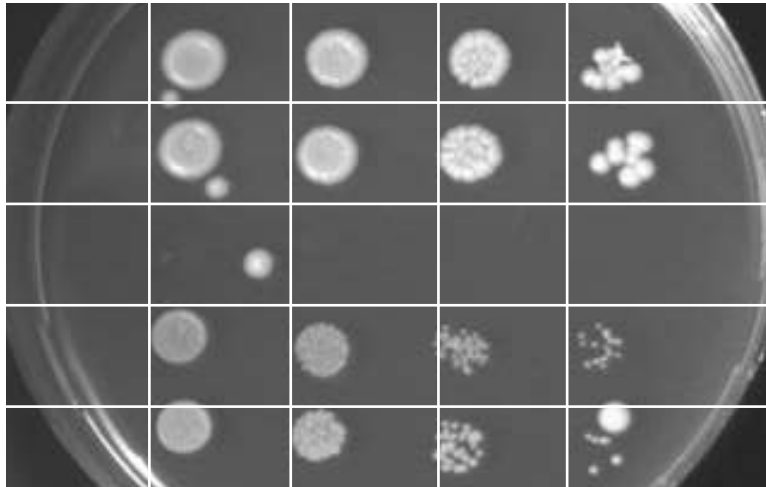
**Medium:** SM + lipoic acid + 20 g L<sup>-1</sup> glucose

**Used for figure:** 3

$10^4$   $10^3$   $10^2$   $10^1$

$10^4$   $10^3$   $10^2$   $10^1$

CEN.PK113-7D

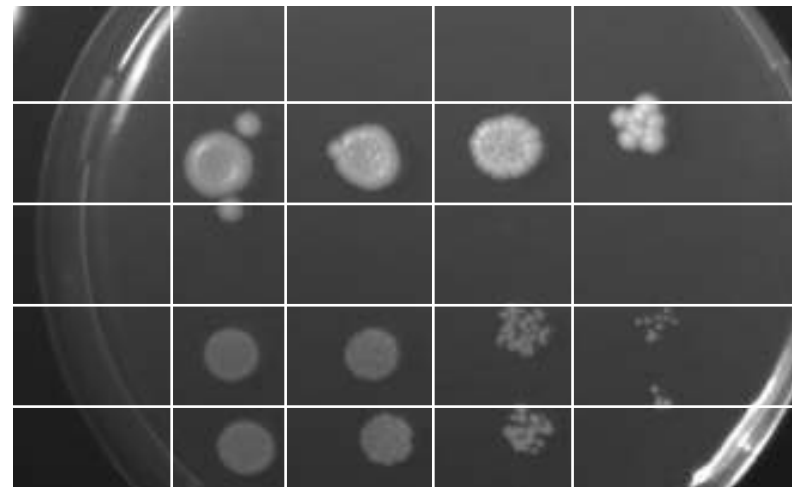


IMX585

IMX745

IMS0482

IMS0483



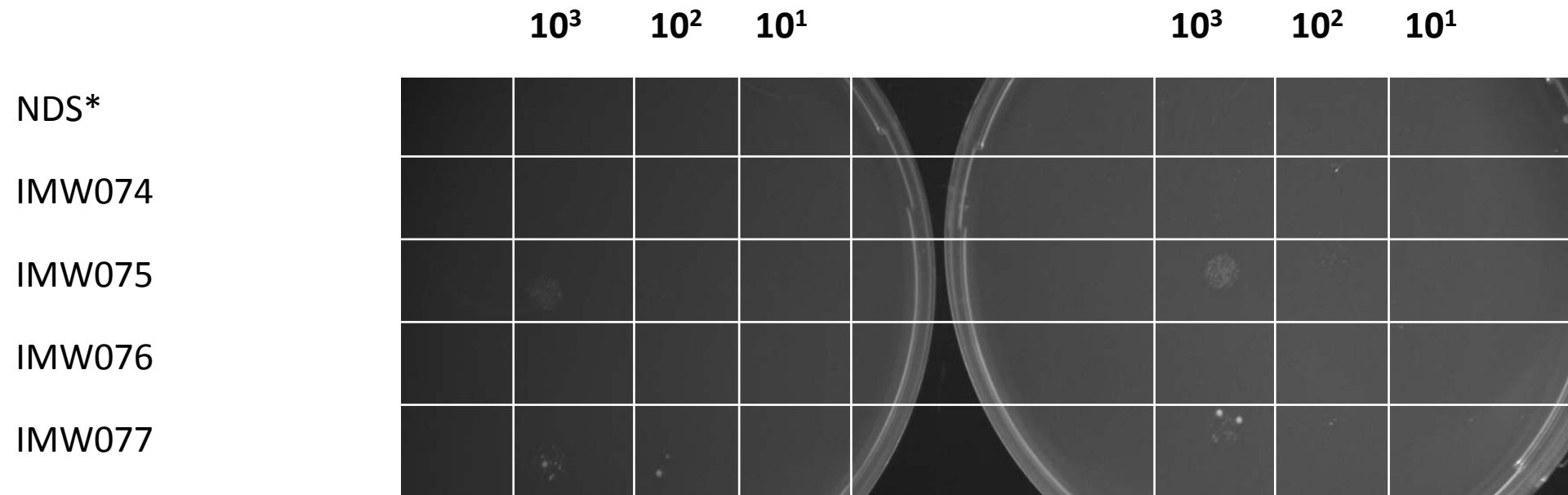
*(CEN.PK113-7D was not spotted on this plate)*

**Strains spotted on:** 20150218

**Photo('s) taken on:** 20150222

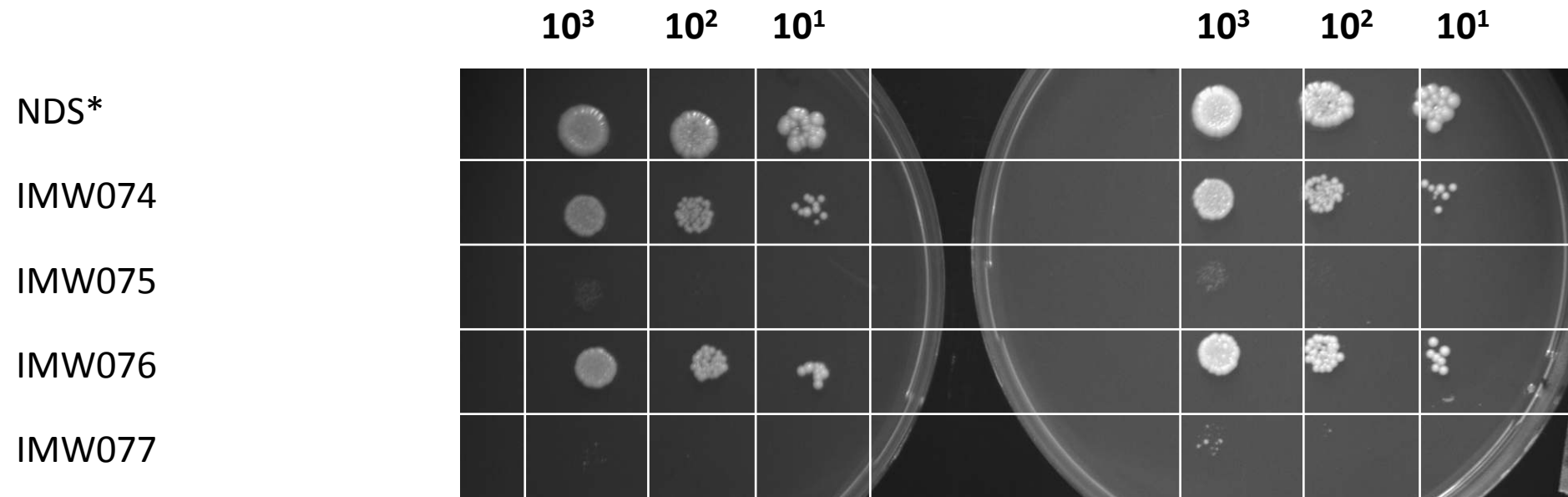
**Medium:** SM + L-carnitine + 20 g L<sup>-1</sup> glucose

**Used for figure:** 3



**Strains spotted on:** 20150417  
**Photo('s) taken on:** 20150421  
**Medium:** SM + 20 g L<sup>-1</sup> glucose  
**Used for figure:** 4

\*NDS, strain not described in this study.



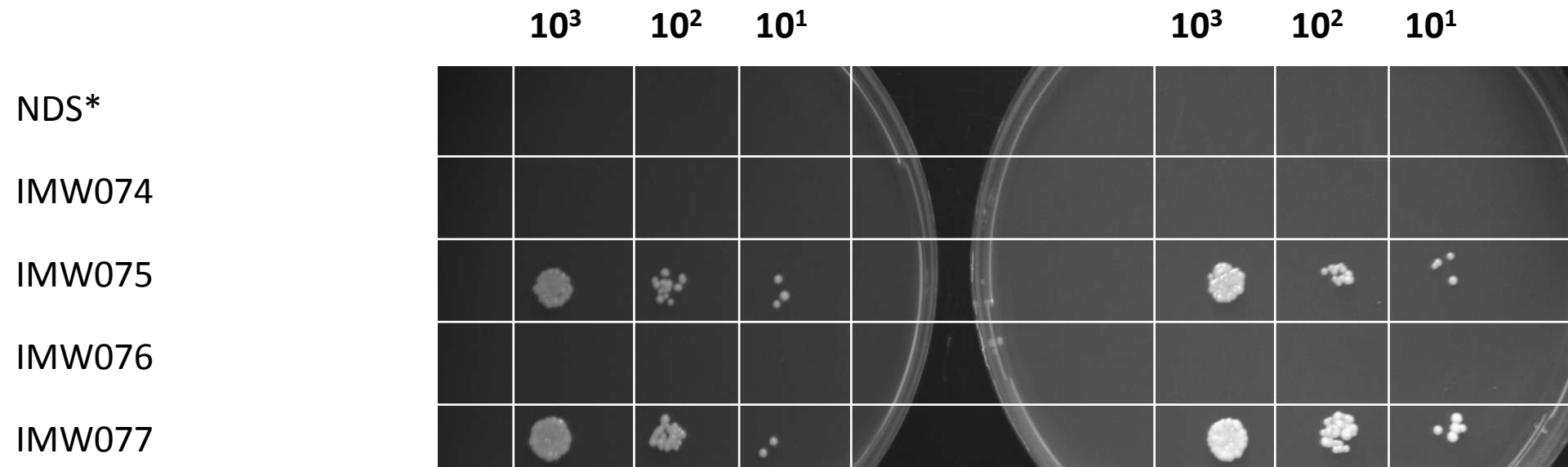
**Strains spotted on:** 20150417

**Photo('s) taken on:** 20150421

**Medium:** SM + lipoic acid + 20 g L<sup>-1</sup> glucose

**Used for figure:** 4

\*NDS, strain not described in this study.



**Strains spotted on:** 20150417

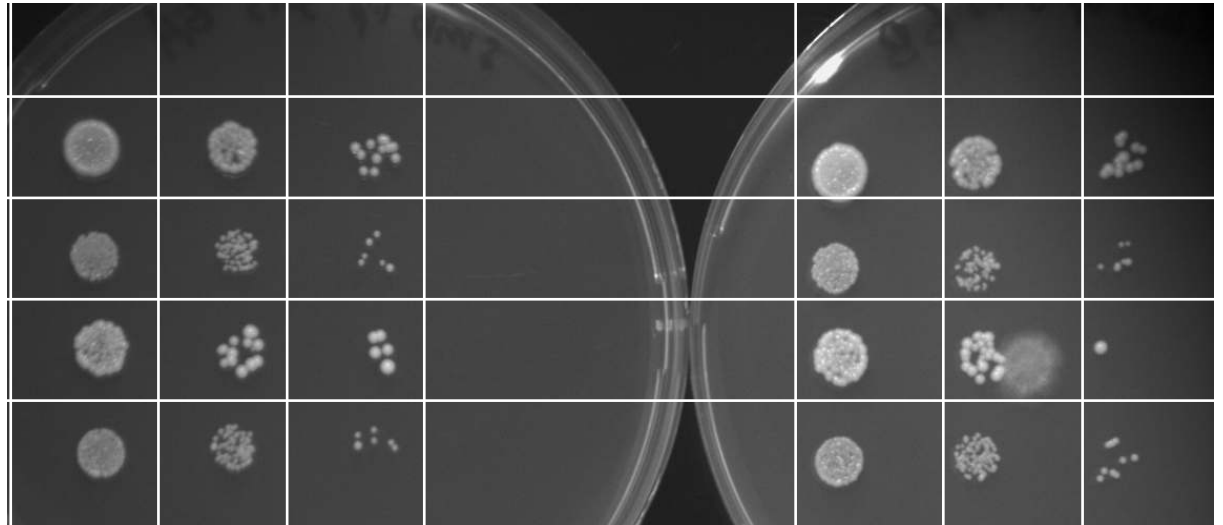
**Photo('s) taken on:** 20150421

**Medium:** SM + L-carnitine + 20 g L<sup>-1</sup> glucose

**Used for figure:** 4

\*NDS, strain not described in this study.

$10^3$     $10^2$     $10^1$                        $10^3$     $10^2$     $10^1$



IMW078

IMW079

IMW081

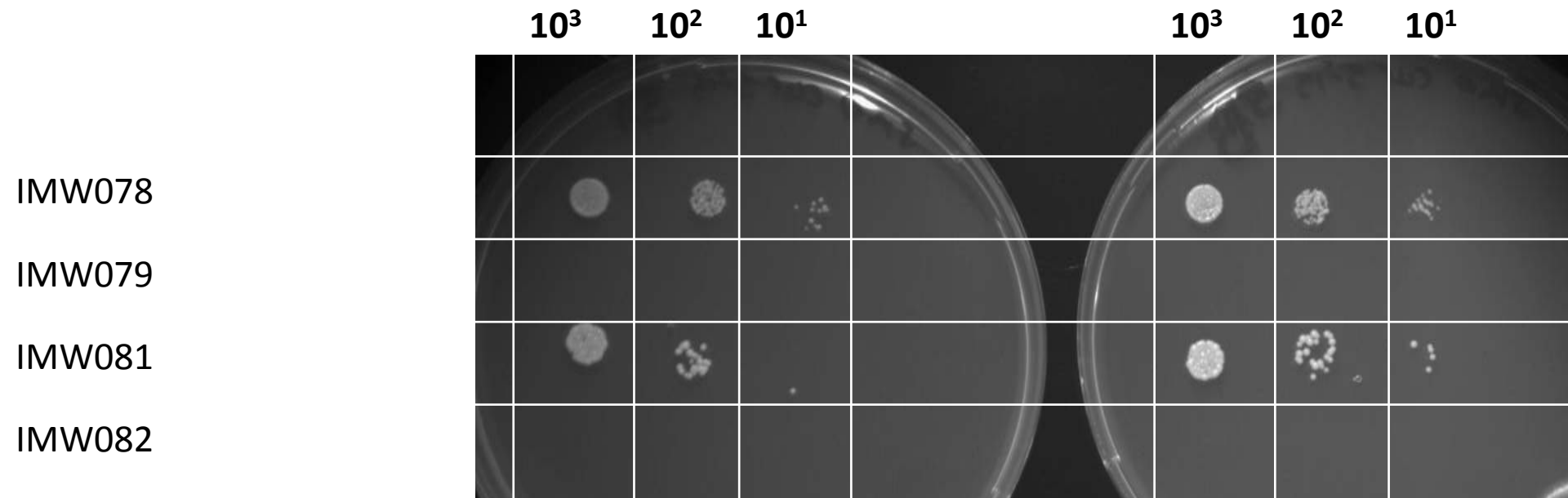
IMW082

**Strains spotted on:** 20150612

**Photo('s) taken on:** 20150616

**Medium:** SM + lipoic acid + 20 g L<sup>-1</sup> glucose

**Used for figure:** 5



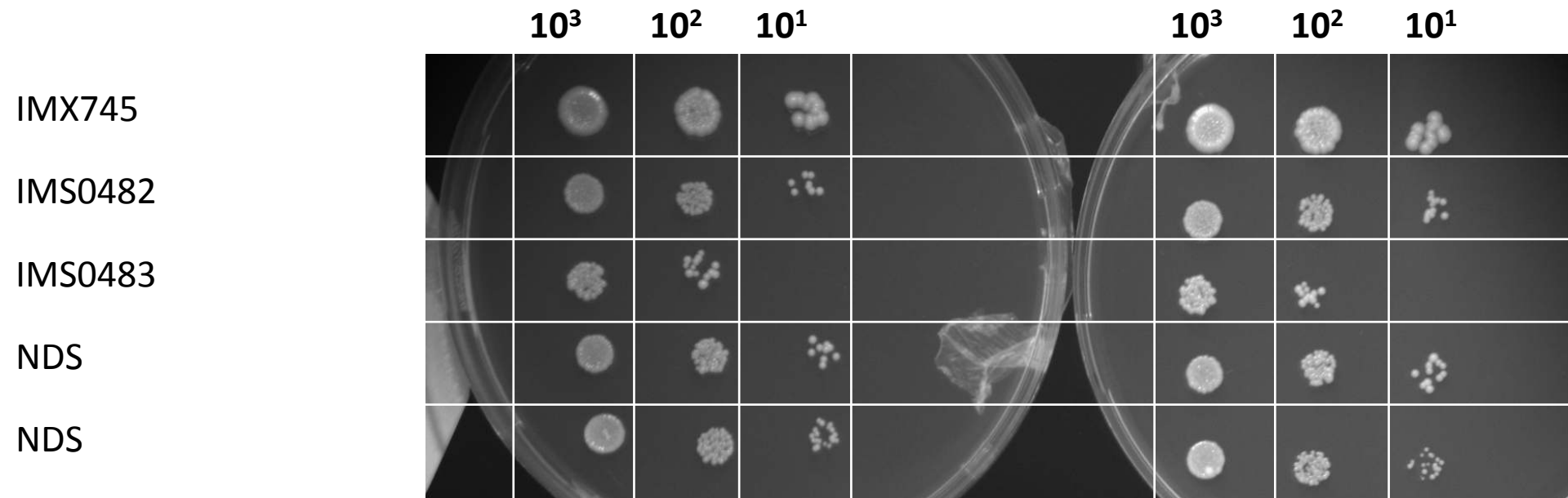
**Strains spotted on:** 20150612

**Photo('s) taken on:** 20150616

**Medium:** SM + L-carnitine + 20 g L<sup>-1</sup> glucose

**Used for figure:** 5





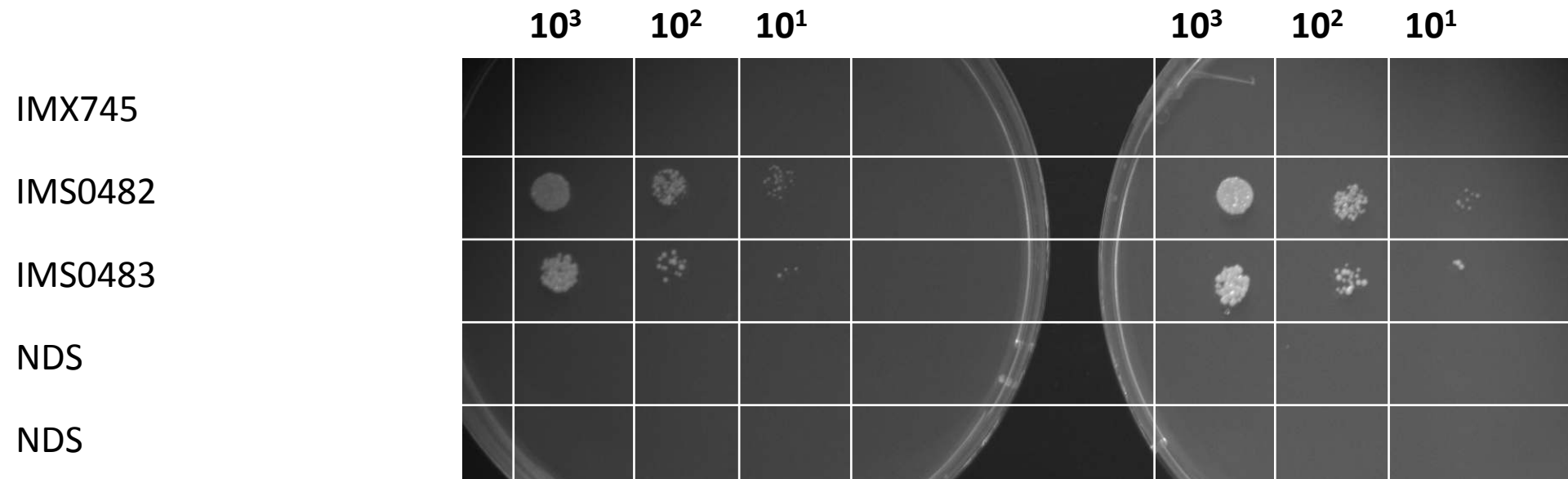
**Strains spotted on:** 20150526

**Photo('s) taken on:** 20150530

**Medium:** SM + lipoic acid + 20 g L<sup>-1</sup> glucose

**Used for figure:** 6

\*NDS, strain not described in this study.



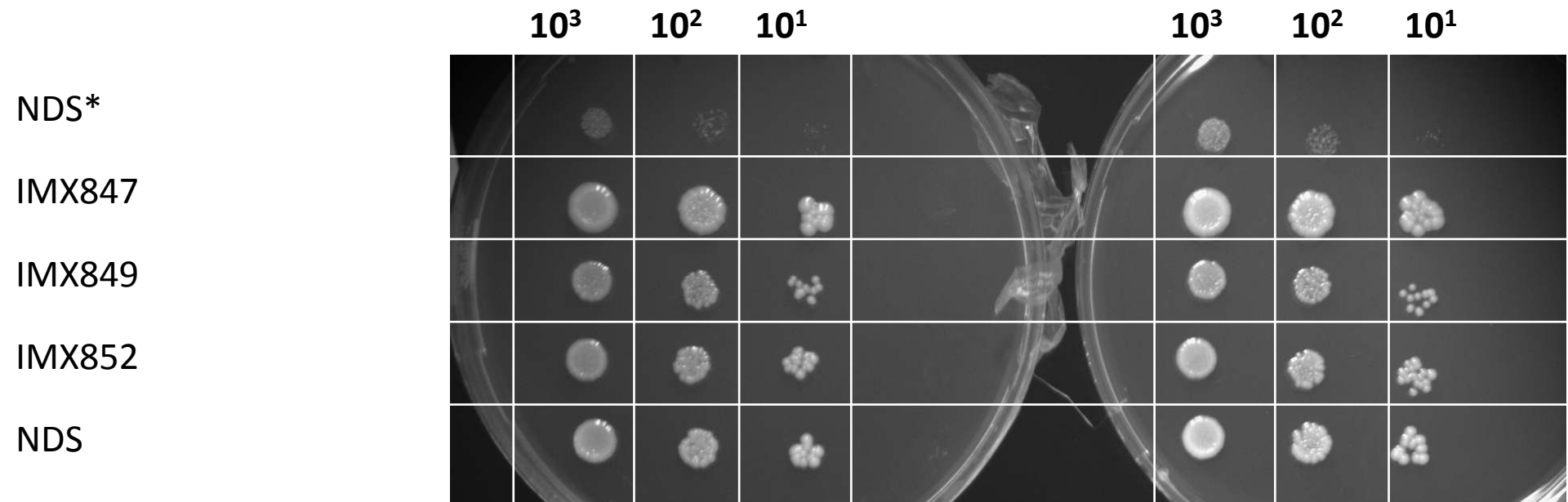
**Strains spotted on:** 20150526

**Photo('s) taken on:** 20150530

**Medium:** SM + L-carnitine + 20 g L<sup>-1</sup> glucose

**Used for figure:** 6

\*NDS, strain not described in this study.



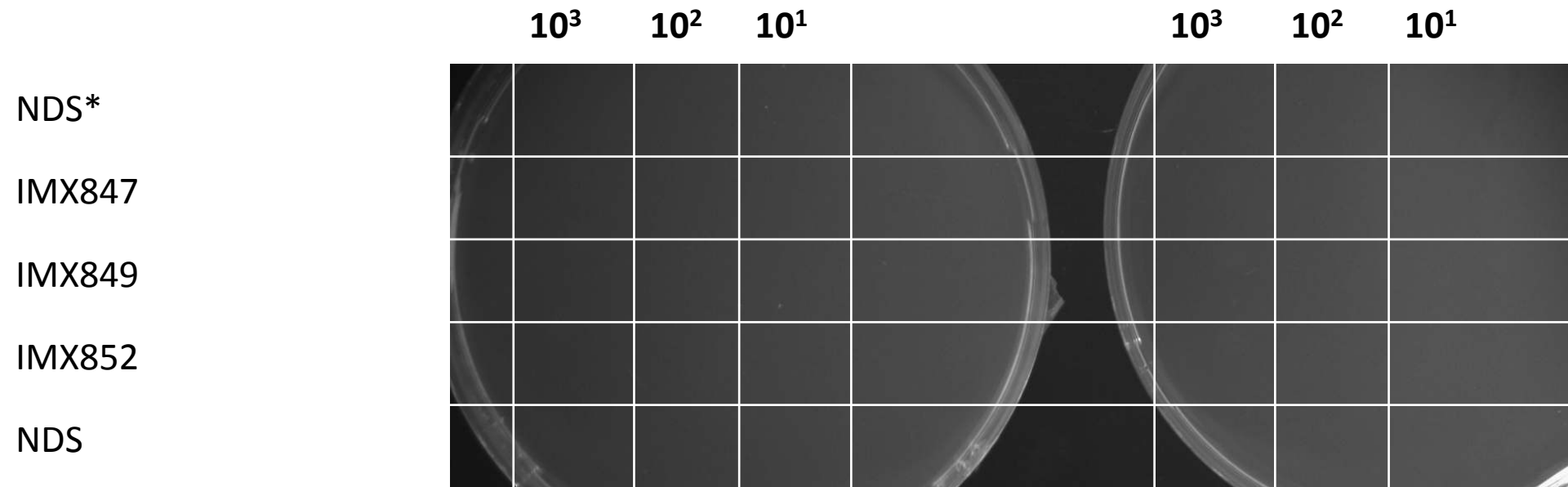
**Strains spotted on:** 20150526

**Photo('s) taken on:** 20150530

**Medium:** SM + lipoic acid + 20 g L<sup>-1</sup> glucose

**Used for figure:** 6

\*NDS, strain not described in this study.



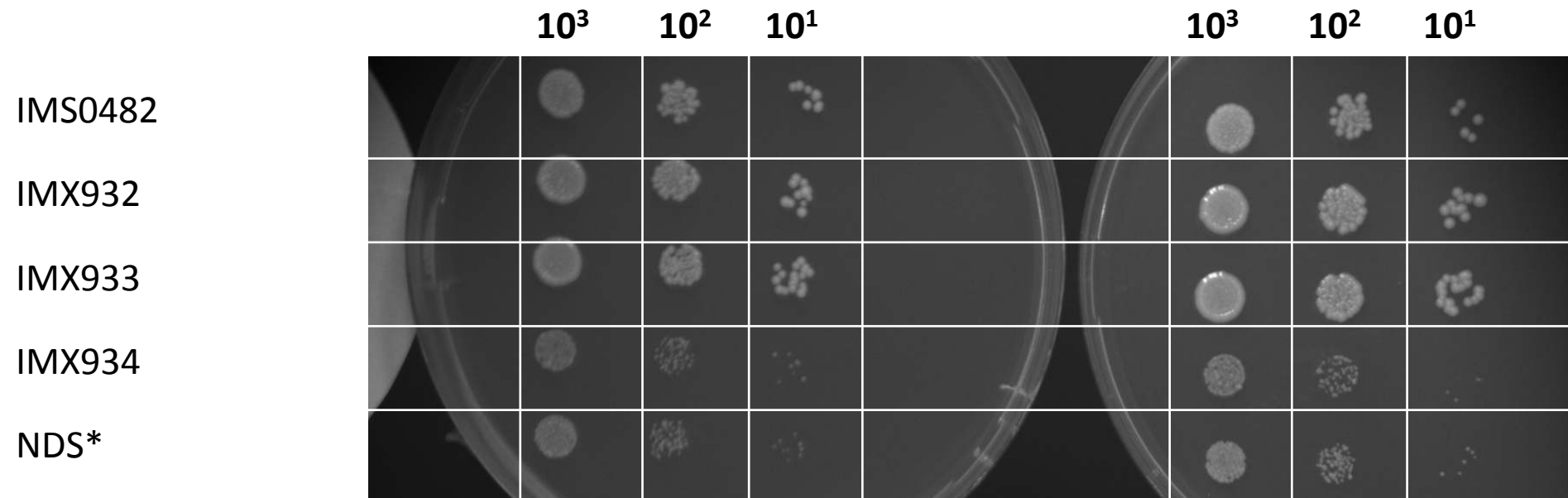
**Strains spotted on:** 20150526

**Photo('s) taken on:** 20150530

**Medium:** SM + L-carnitine + 20 g L<sup>-1</sup> glucose

**Used for figure:** 6

\*NDS, strain not described in this study.



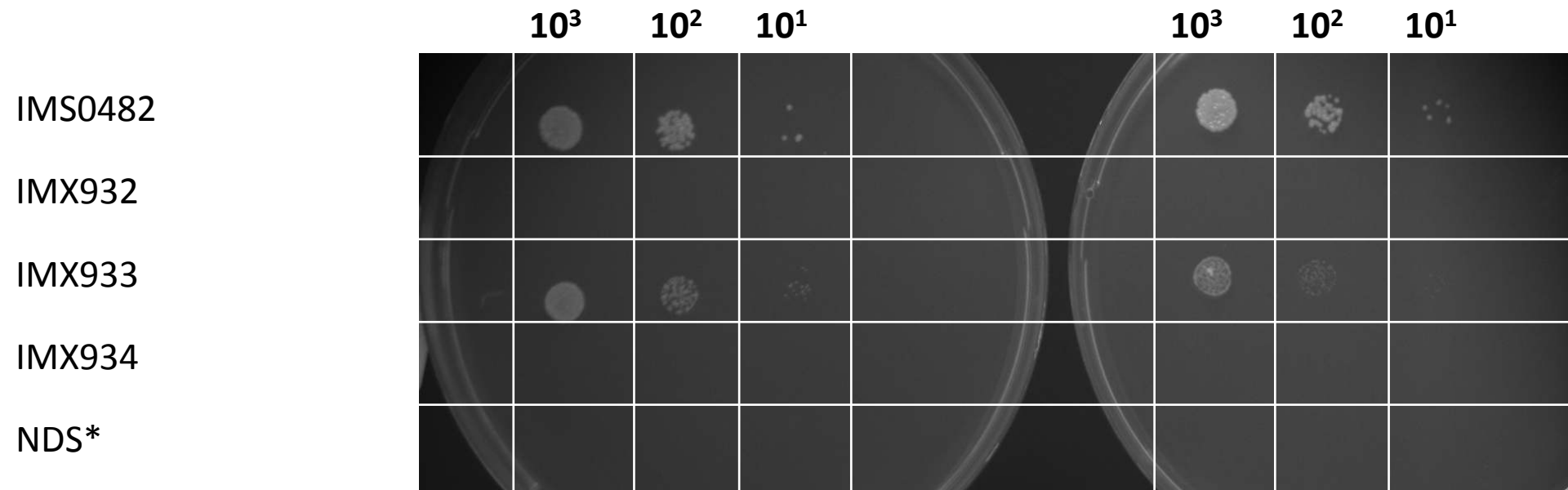
**Strains spotted on:** 20151027

**Photo('s) taken on:** 20151031

**Medium:** SM + lipoic acid + 20 g L<sup>-1</sup> glucose

**Used for figure:** 6

\*NDS, strain not described in this study.



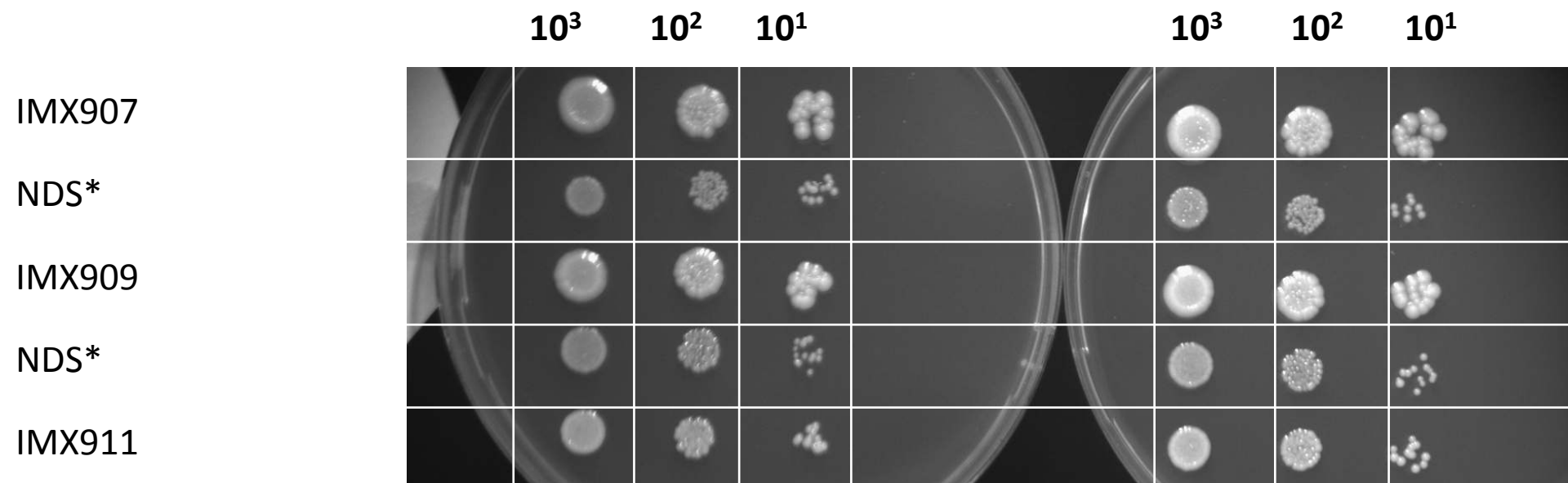
**Strains spotted on:** 20151027

**Photo('s) taken on:** 20151031

**Medium:** SM + L-carnitine + 20 g L<sup>-1</sup> glucose

**Used for figure:** 6

\*NDS, strain not described in this study.



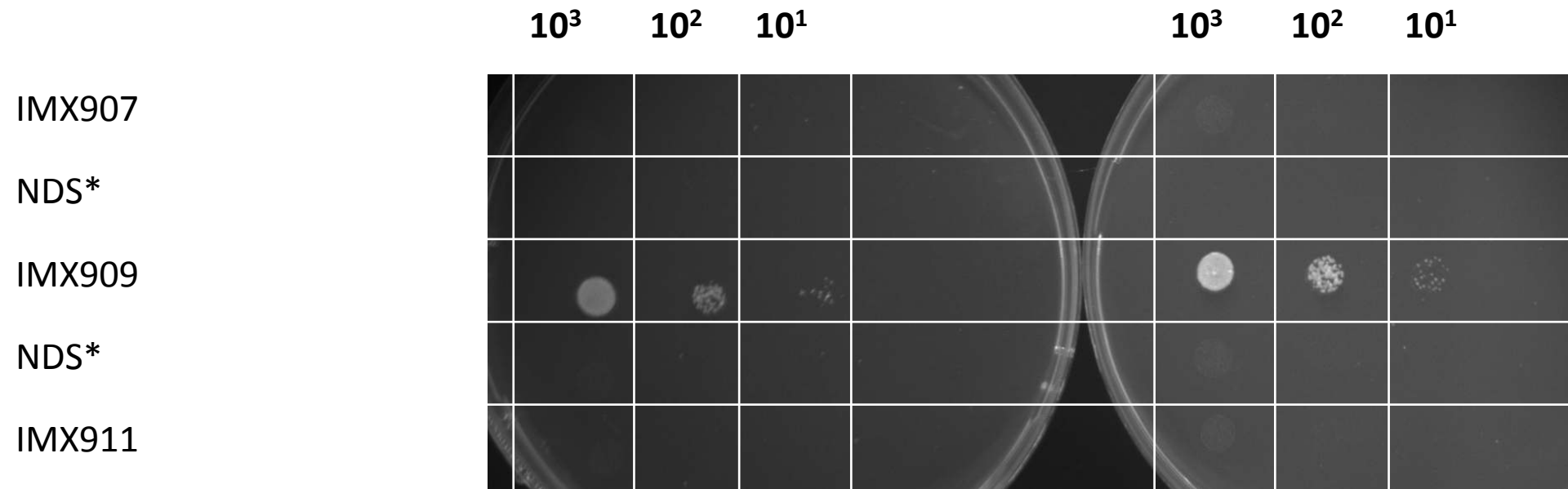
**Strains spotted on:** 20150717

**Photo('s) taken on:** 20150721

**Medium:** SM + lipoic acid + 20 g L<sup>-1</sup> glucose

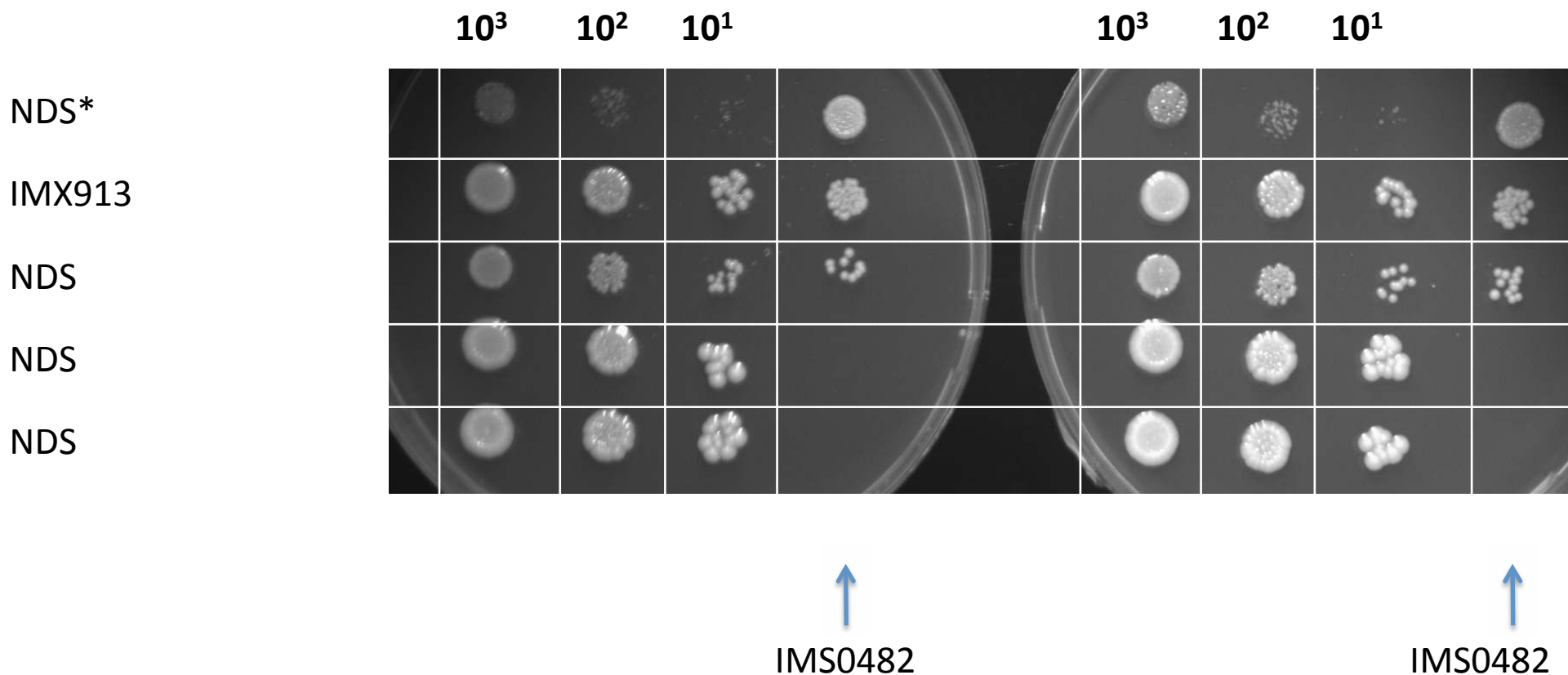
**Used for figure:** 6

\*NDS, strain not described in this study.



**Strains spotted on:** 20150717  
**Photo('s) taken on:** 20150721  
**Medium:** SM + L-carnitine + 20 g L<sup>-1</sup> glucose  
**Used for figure:** 6  
 \*NDS, strain not described in this study.





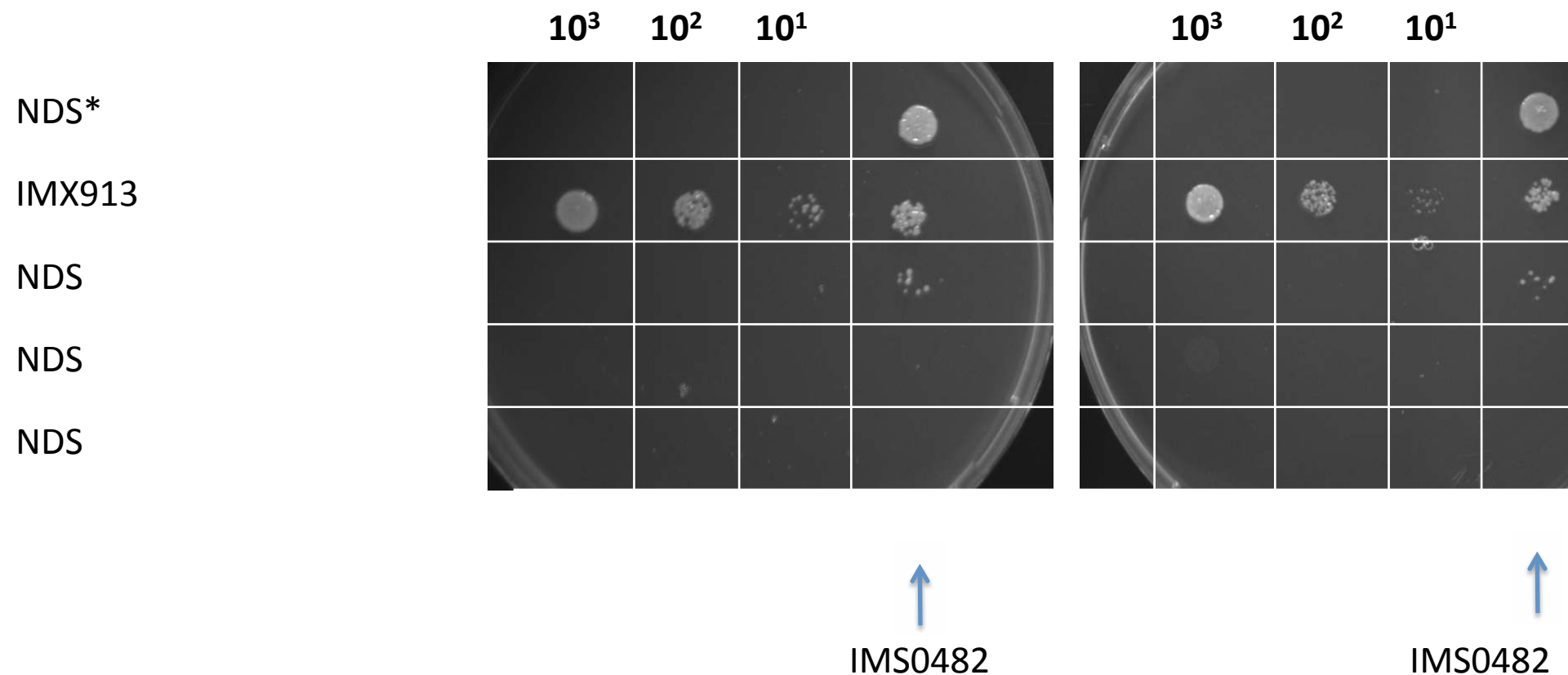
**Strains spotted on:** 20150717

**Photo('s) taken on:** 20150721

**Medium:** SM + lipoic acid + 20 g L<sup>-1</sup> glucose

**Used for figure:** 6

\*NDS, strain not described in this study.



**Strains spotted on:** 20150717

**Photo('s) taken on:** 20150721

**Medium:** SM + L-carnitine + 20 g L<sup>-1</sup> glucose

**Used for figure:** 6

\*NDS, strain not described in this study.