

SUPPLEMENT

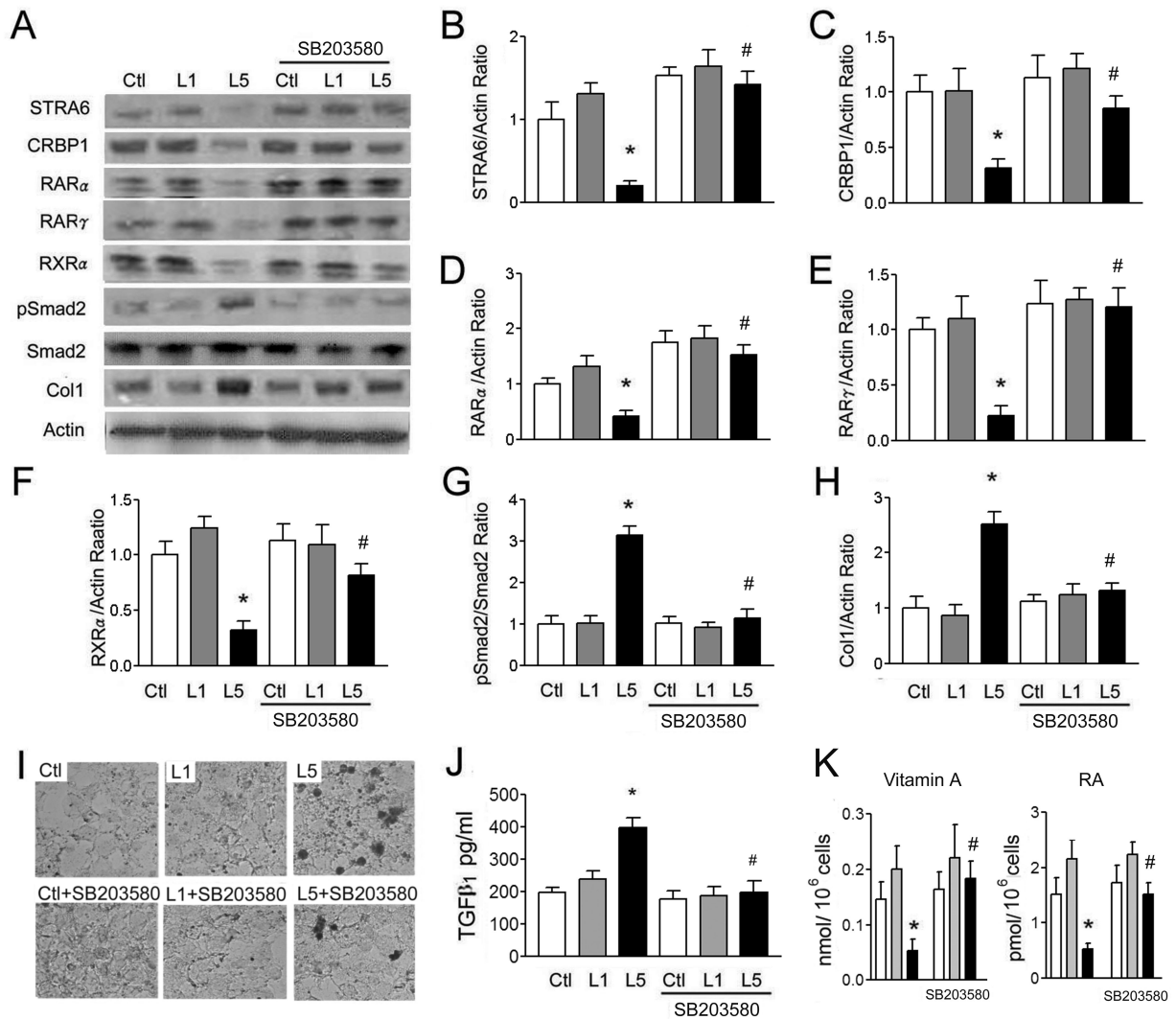


Figure S1. p38MAPK inhibitor represses L5 effect on STRA6 cascades and renal injury. (A) Western blots showed STRA6, CRBP1, RAR α , RAR γ , RXR α , pSmad2, and collagen 1 (Col1) of Ctl, L1-, or L5-treated RETC cells with or without SB203580 treatment for 24 hours (n=3). Quantitative analysis showed that L5 treatment decreased STRA6 (B), CRBP1(C), RAR α (D), RAR γ (E), and RXR α (F), but increased pSmad2/Smad2 ratio (G) and Collagen 1 (H). All these effects of L5 were reversed in SB203580-treated RETC cells under L5-stimulation. (I) Representative optical microscopy images showed nuclei of apoptotic cells (thick dark stain) in Ctl, L1-treated, L5-treated cells with or without SB203580 treatment. SB203580 decreased nuclei of apoptotic cells in RETC cells under L5-stimulation. (J) ELISA showed SB203580 treatment attenuated the increase of TGF β ₁ concentration in culture medium of L5-treated RETC cells. (K) ELISA revealed that SB204580 treatment reversed the reduction of vitamin A and RA level under L5 stimulation in of RETC cells. * P<0.05 vs. Ctl and L1; #P<0.05 vs. L5.