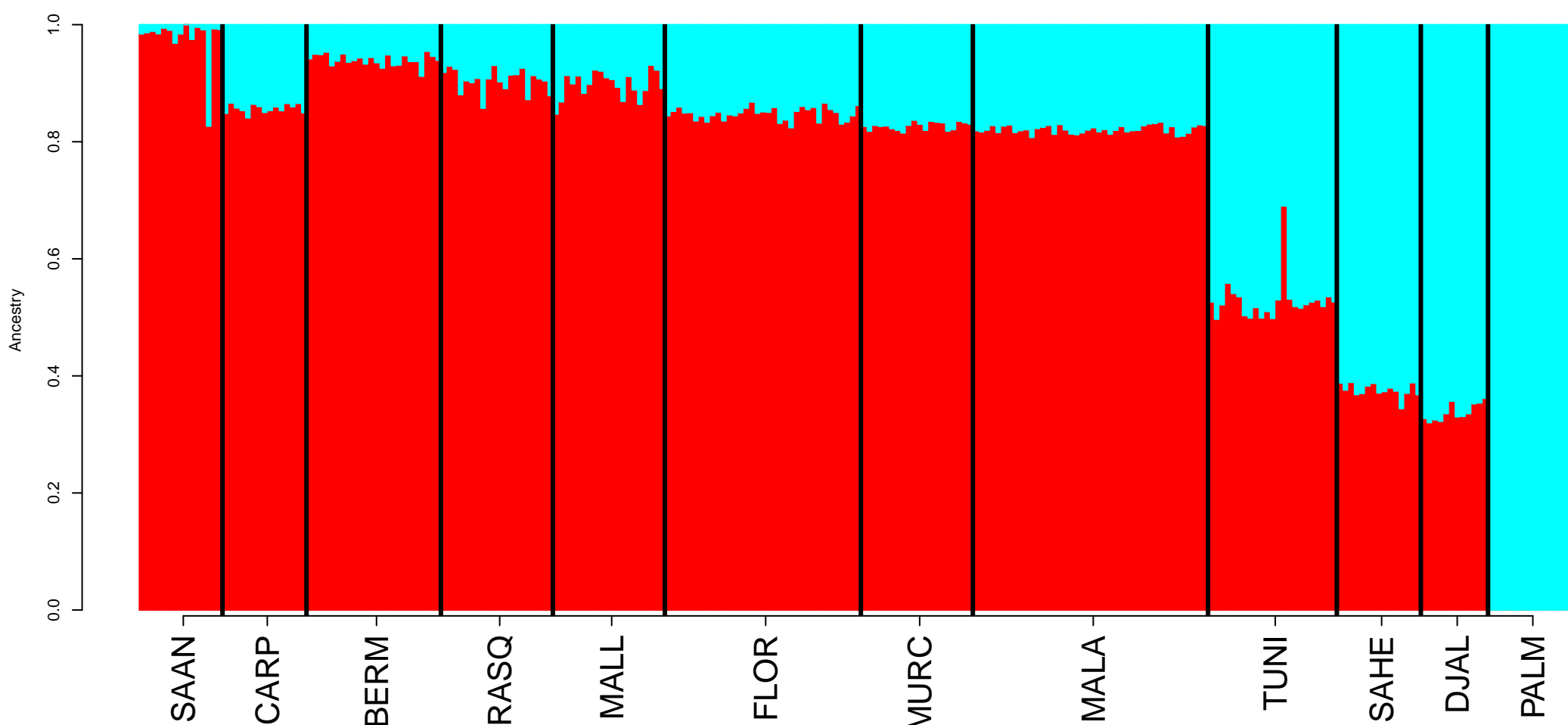
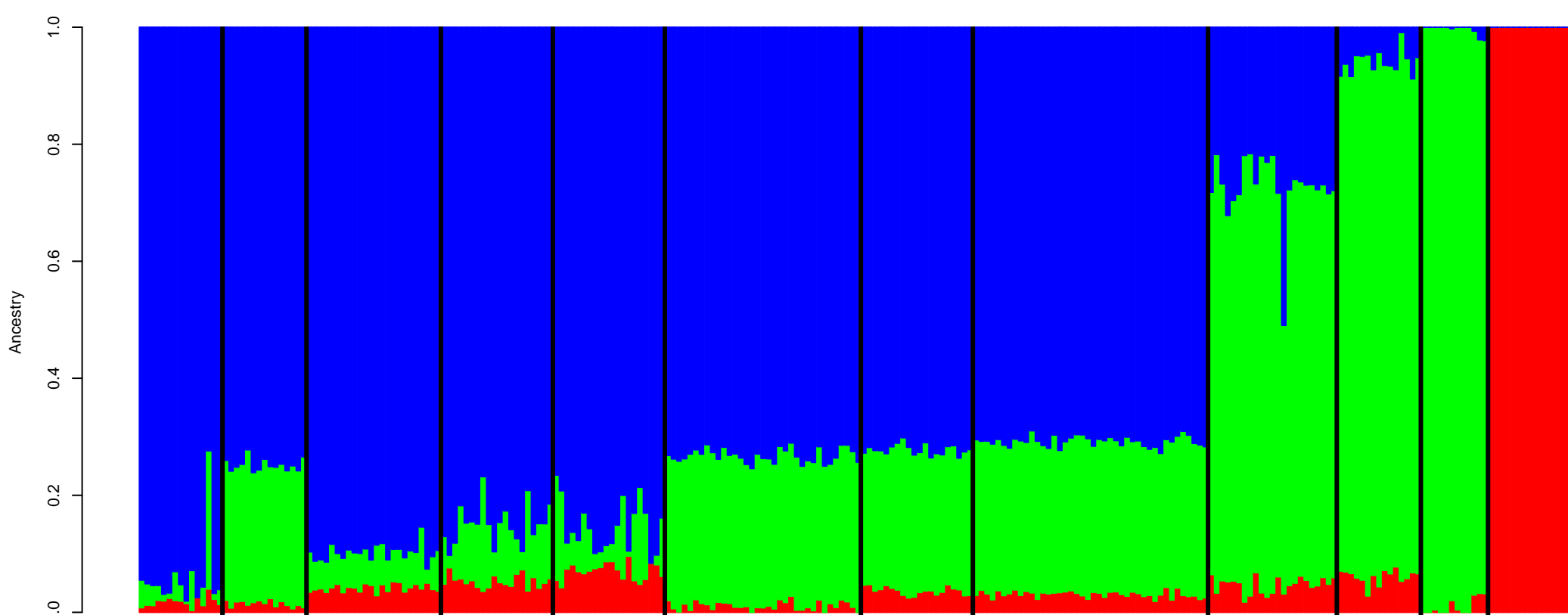


Figure S2. Admixture analysis ( $K = 2-12$ ) of goats from Spain (Bermeya, Blanca de Rasquera, Malagueña, Murciano-Granadina, Florida and Mallorquina), Tunisia, Burkina Faso (Sahel and Djallonké) and Central East Europe (Carpathian and Saanen).

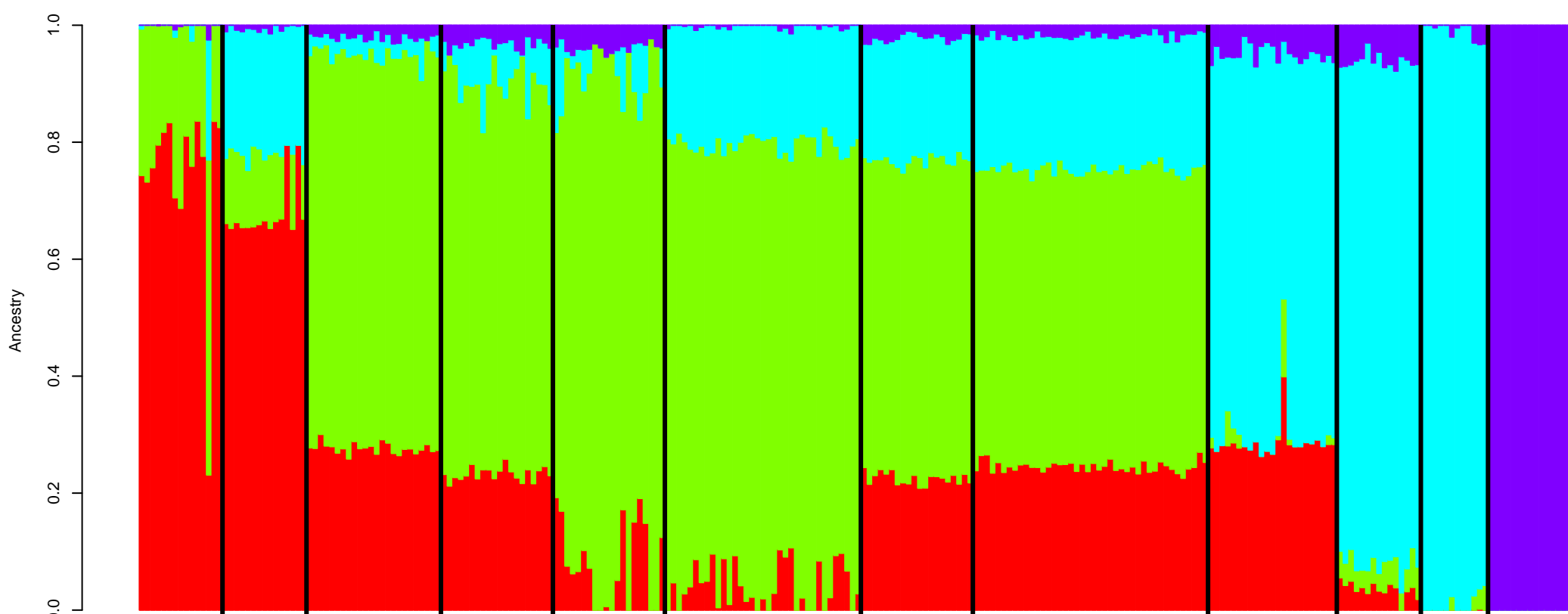
K= 2



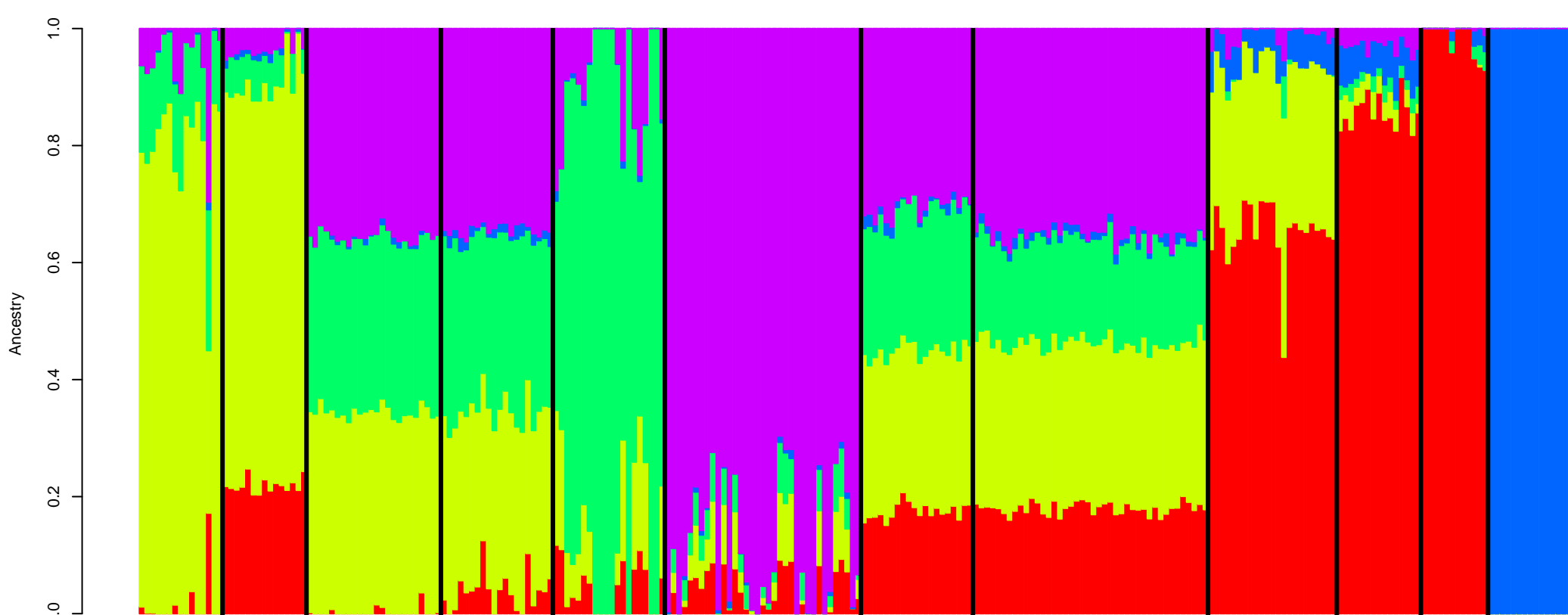
K= 3



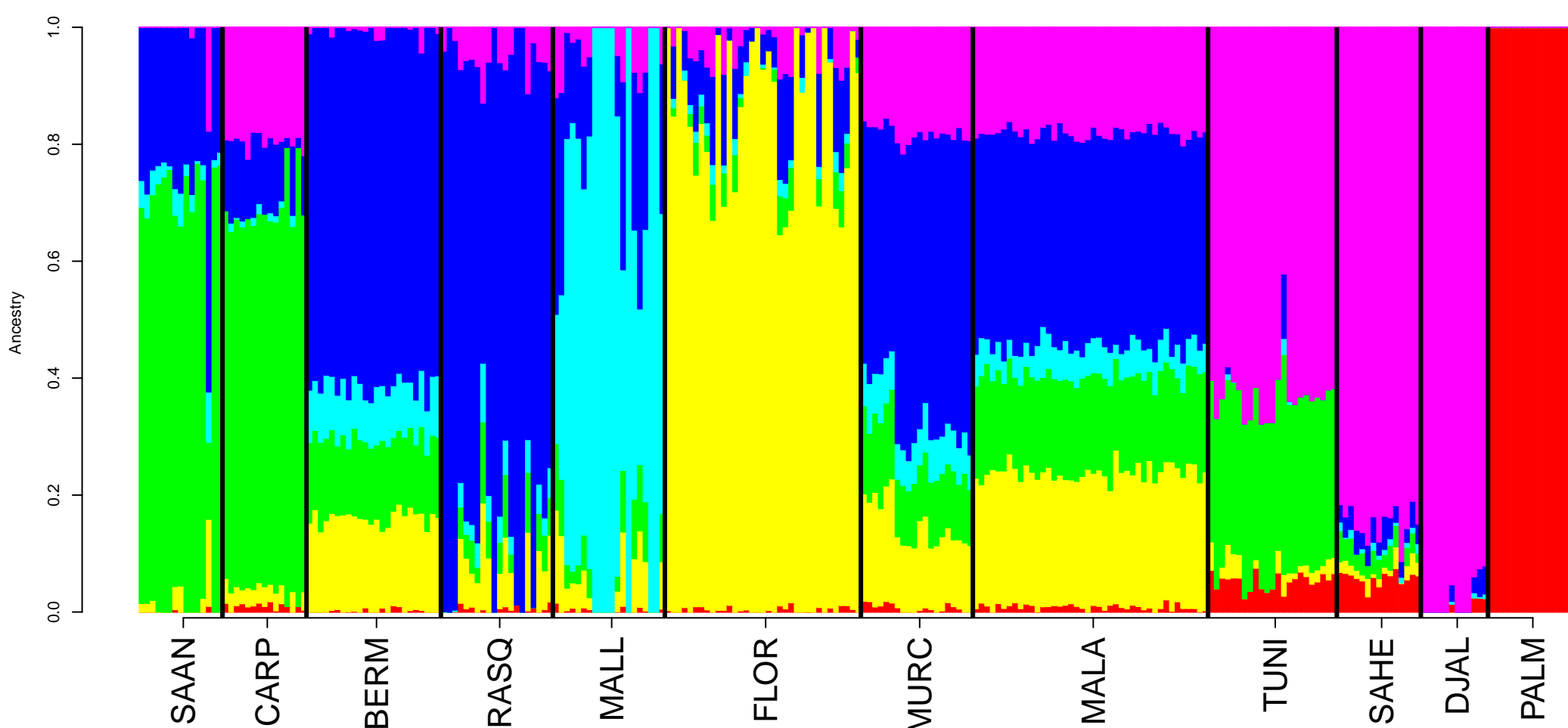
K= 4



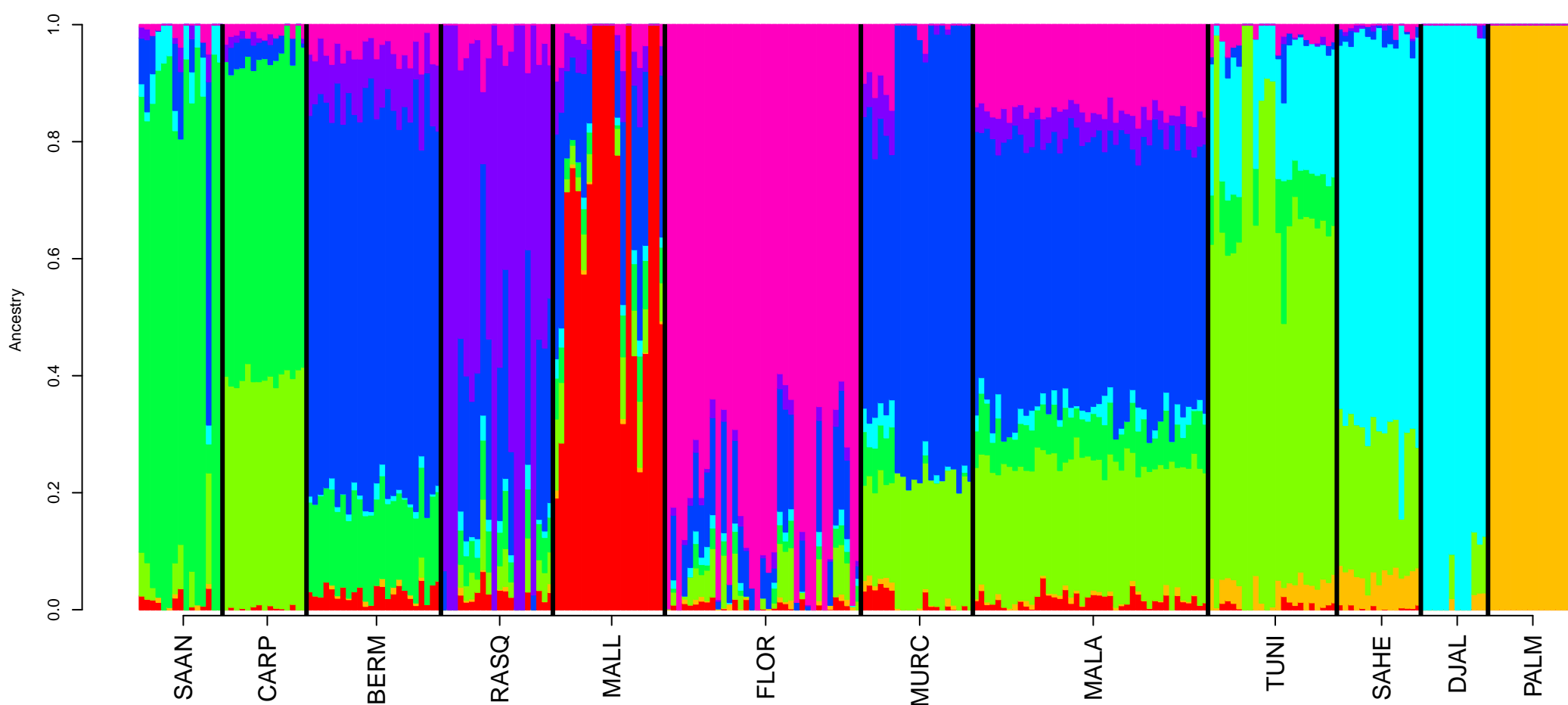
K= 5



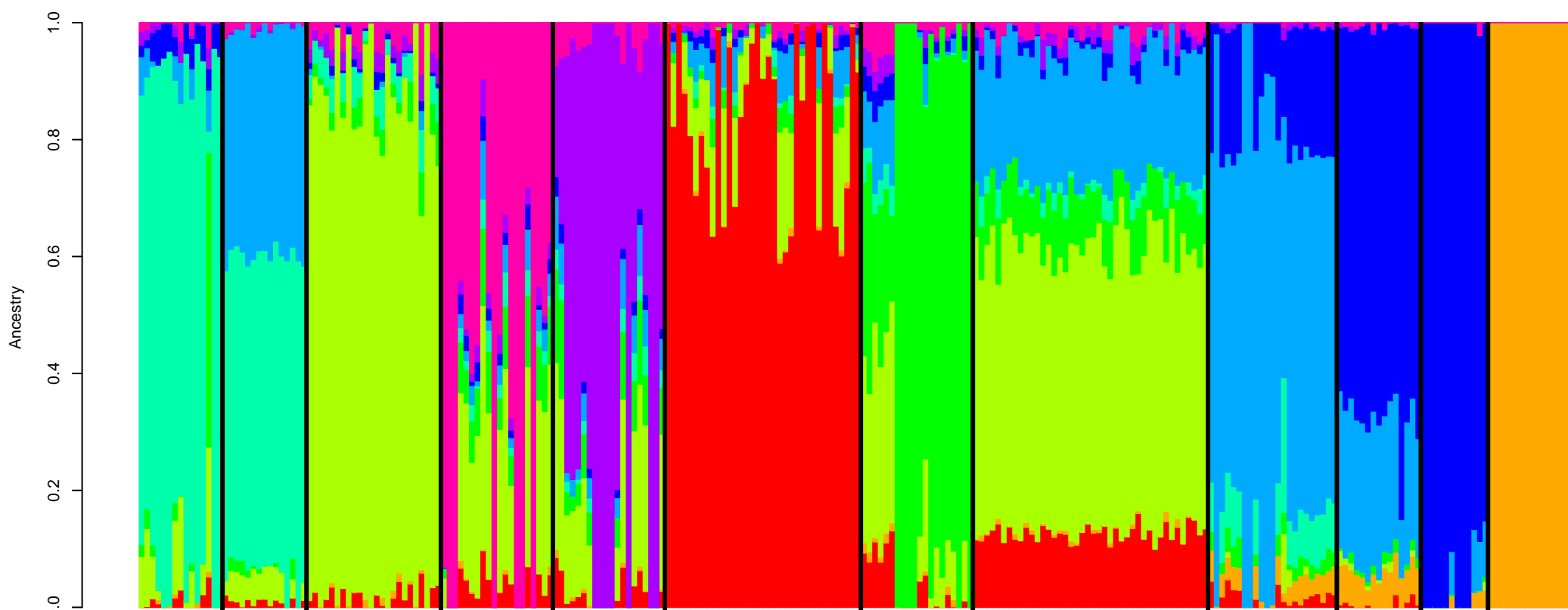
K= 6



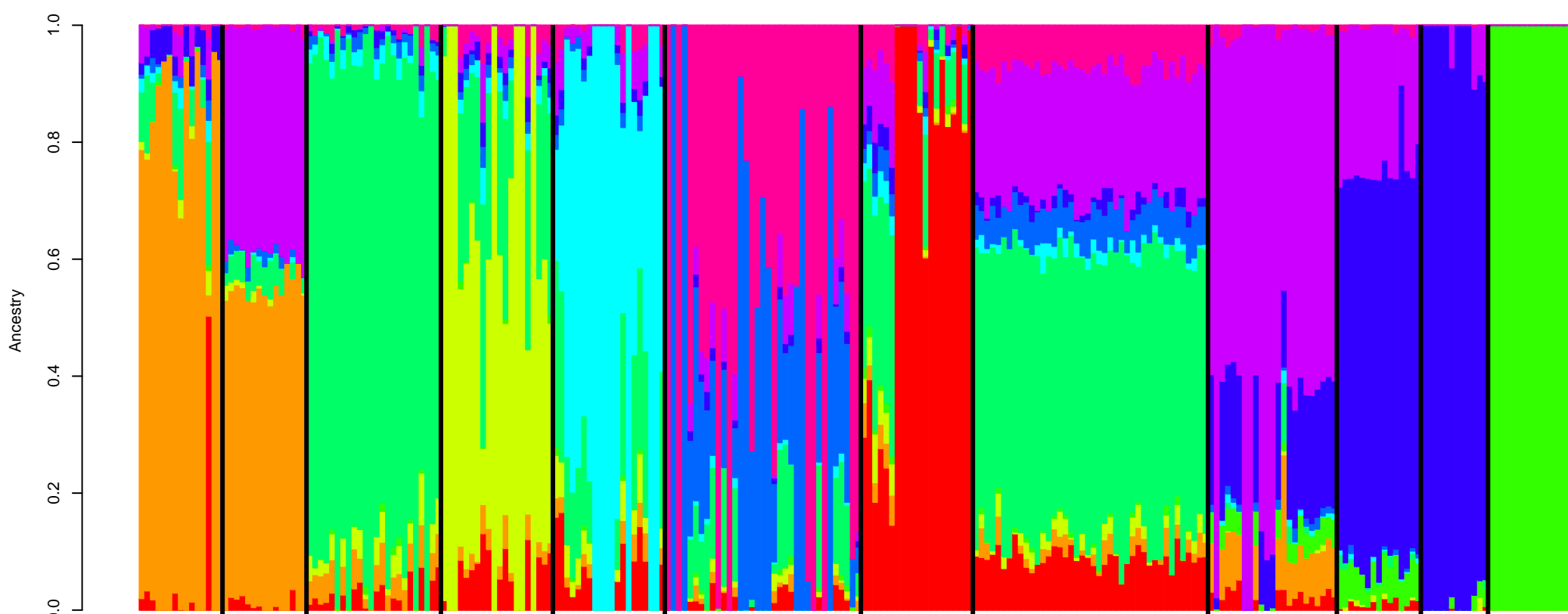
K= 8



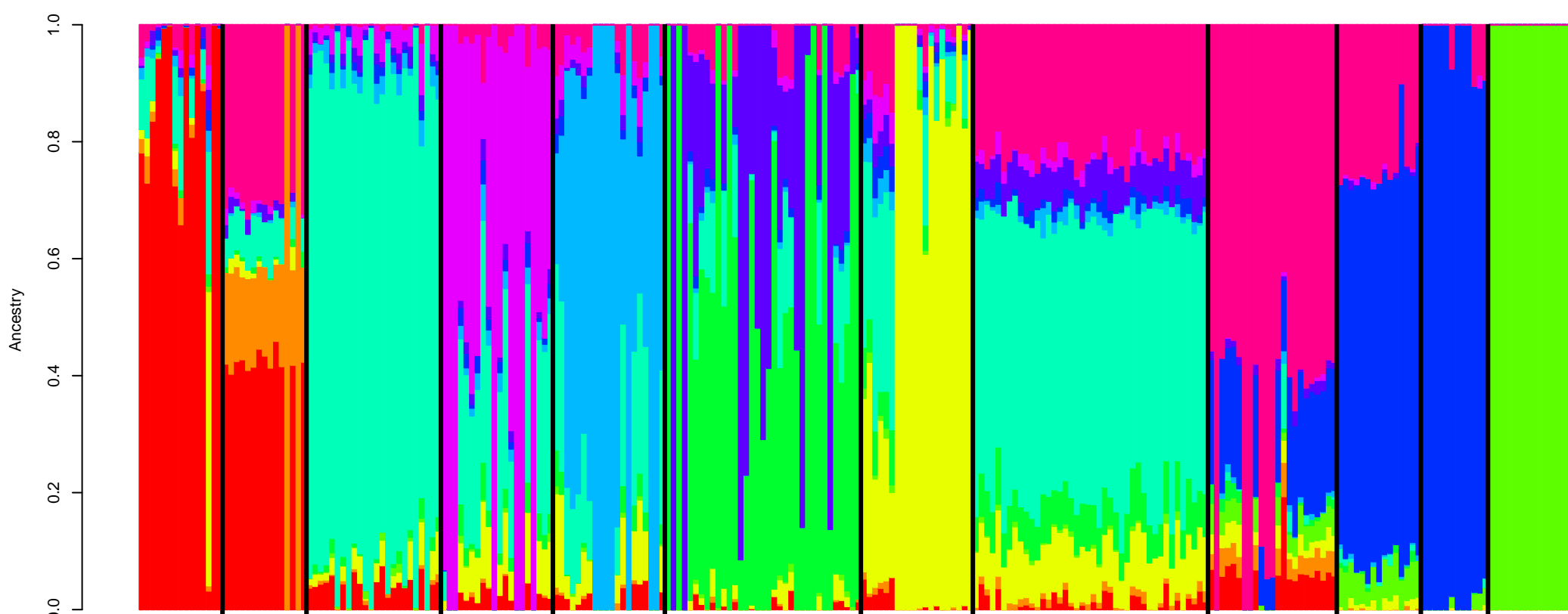
K= 9



K= 10



K= 11



K= 12

