

Supplementary Information

AUTOPHAGY IS INDUCED IN THE SKELETAL MUSCLE OF CACHECTIC CANCER PATIENTS

Zaira Aversa^{1*}, Fabrizio Pin^{2,3*}, Simone Lucia¹, Fabio Penna^{2,3}, Roberto Verzaro⁴, Maurizio Fazi⁴,
Giuseppina Colasante⁵, Andrea Tirone⁵, Filippo Rossi Fanelli¹, Cesarina Ramaccini¹,
Paola Costelli^{2,3}, Maurizio Muscaritoli¹

¹Department of Clinical Medicine, Sapienza University of Rome, Rome, Italy

²Department of Clinical and Biological Sciences, University of Turin, Turin, Italy

³Interuniversity Institute of Myology, Italy

⁴Department of Surgery, M.G. Vannini Hospital, Rome, Italy

⁵UOSA Chirurgia Bariatrica, Azienda Ospedaliera Universitaria Senese, Siena, Italy

*Zaira Aversa and Fabrizio Pin equally contributed.

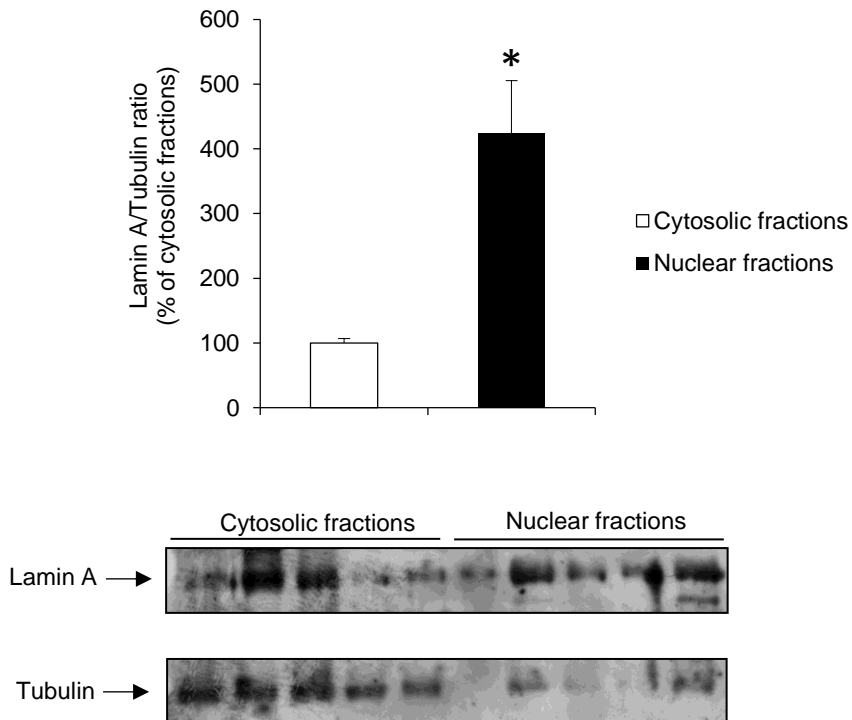
Corresponding author:

Maurizio Muscaritoli, Department of Clinical Medicine, Sapienza, University of Rome, Viale dell'Università 37, 00185 Rome, Italy (e-mail: maurizio.muscaritoli@uniroma1.it); or

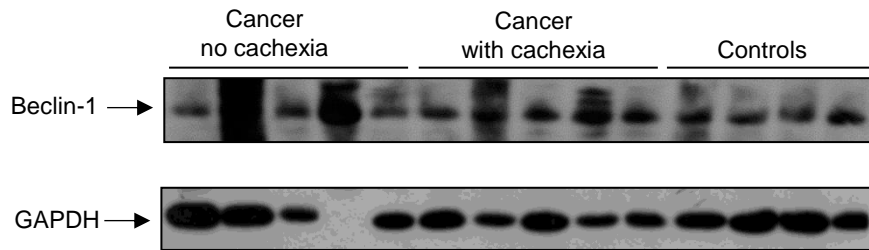
Paola Costelli, Department of Clinical and Biological Sciences, University of Turin - Corso Raffaello 30, 10125 Turin, Italy (e-mail: paola.costelli@unito.it).

Supplementary Table S1. Oligonucleotide sequences used for real-time PCR

<i>Gene</i>	<i>NCBI Reference Sequence</i>	<i>Primer sequence</i>
Beclin-1	NM_003766.3	FW: AGGAACTCACAGCTCCATTAC RW: AATGGCTCCTCTCCTGAGTT
p62/SQSTM1	NM_003900.4	FW: ATCGGAGGATCCGAGTGT RW: TGGCTGTGAGCTGCTCTT
LC3B	NM_022818.4	FW: GCCGCACCTTCGAACAAA RW: TCGTTCTATTATCACCGGGATTTT
Bnip3	NM_004052.2	FW: CTGGACGGAGTAGCTCCAAG RW: GCCCTGTTGGTATCTTGTGG
Nix/Bnip3L	NM_004331.2	FW: GATGTGGAAATGCACACCAG RW: GACCAGTCTGATACCCAGTCC
PINK1	NM_032409.2	FW: TGGTCGACTACCCTGATGTG RW: CGCAGGGTACAGGGATAGTT
Parkin	NM_004562.2	FW: TCGCAACAAATAGTCGGAAC RW: GAACAAACTGCCGATCATTG
TFEB	NM_007162.2	FW: GGTGCAGTCCTACCTGGAGA RW: GTGGGCAGCAAACCTTGTTCC
GAPDH	NM_002046.3	FW: CCACTCCTCCACCTTTGAC RW: ACCCTGTTGCTGTAGCCA
TBP	NM_003194	FW: TGCACAGGAGCCAAGAGTGAA RW: CACATCACAGCTCCCCACCA



Supplementary Figure S1. Purity of the cytosolic and nuclear fractions. (A) Lamin A/Tubulin ratio was evaluated by western blotting in cytosolic (n=5) and nuclear (n=5) fractions: representative western blots for Lamin A and Tubulin are shown on the lower panel and densitometric quantifications of Lamin A/Tubulin ratio are shown on the upper panel. Data (mean \pm SEM) are expressed as percentage of cytosolic fractions. Significance of the differences: *p<0.05 vs cytosolic fractions.



Supplementary Figure S2. Beclin-1 protein expression in rectus abdominis muscle of cancer and control patients. Whole blot including the representative patterns selected for beclin-1 expression in Fig. 1C (lanes 1 and 3).