

Figure A1. Stools tested for fecal indole concentration in 50 volunteers challenged with *Cryptosporidium*. Volunteers were grouped based on infection outcome: uninfected (no oocysts or diarrhea) and infected (oocysts + diarrhea). Boxes indicate the study day that stool samples were collected from each volunteer: Stage 1, (baseline) prior to or within 48 hours after challenge; stage 2, period when diarrhea occurred; and stage 3, period when oocyst shedding and diarrhea had resolved. Diarrheic stools are indicated (hatched). TU502 represents *C. hominis*; all other isolates are *C. parvum*. Fecal microbiota were studied in infected (#5, 29, 119, 120, 132, 178) and uninfected (#9, 123, 130, 156, 185) subjects.

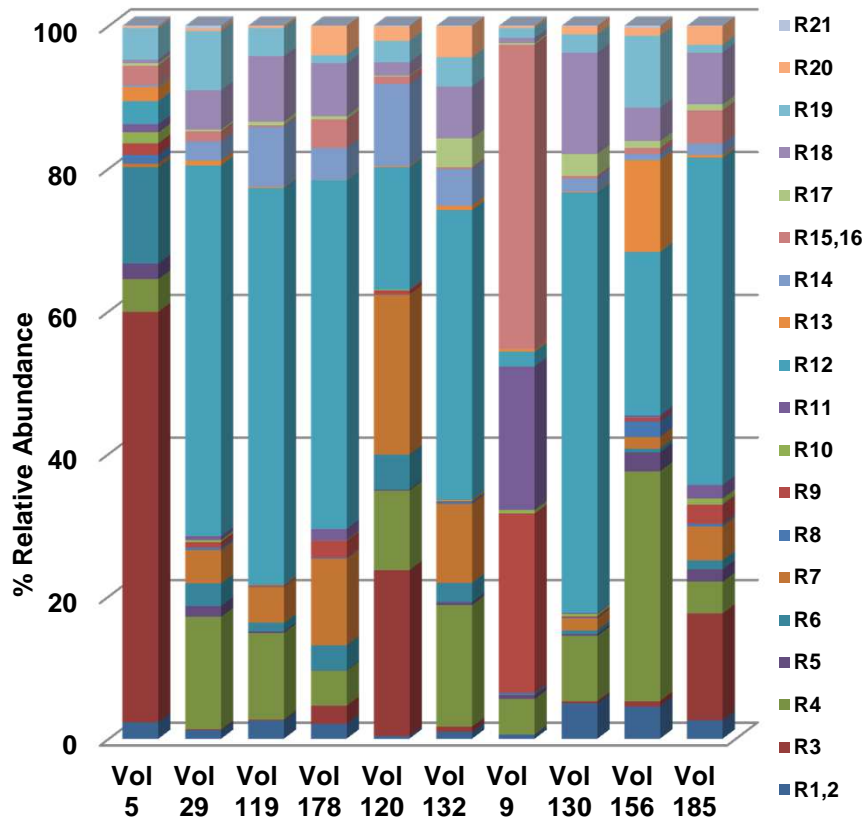


Figure A2. Percent relative abundance for 19 common bacterial taxa in the stools of 10 healthy subjects. Stools were collected prior to or within 48 hours after challenge with *Cryptosporidium*. See Table 1 for identification of bacteria represented by the coded designations in the legend.

Table A1. Indole concentration (mM) in stool samples from 17 symptomatic subjects infected with *Cryptosporidium*. Indole measurements were done at baseline (before or within 48 hours of challenge, n=18) or during diarrheal illness (n=17). Fecal indole levels are compared for parameters representing intensity of infection and severity of illness. Values represent the mean \pm standard deviation for each group. Comparisons were tested using unpaired Student's t test.

	Fecal Indole Concentration (mM)			
	At Baseline		During diarrheal illness	
		p=		p=
Onset of diarrhea				
≤ Day 4	1.72 ± 0.65	0.984	1.33 ± 0.93	0.723
> Day 4	1.72 ± 0.94		1.49 ± 0.94	
Duration of diarrhea				
≤ 7 days	1.68 ± 0.87	0.773	1.56 ± 1.03	0.367
>7 days	1.80 ± 0.63		1.13 ± 0.63	
Total stool weight				
≤1500 g	1.76 ± 0.89	0.819	1.64 ± 0.93	0.268
>1500 g	1.67 ± 0.64		1.14 ± 0.87	
Number of unformed stools				
≤14	1.69 ± 0.85	0.821	1.67 ± 0.93	0.113
>14	1.78 ± 0.70		0.93 ± 0.71	
Onset of shedding				
≤ Day 6	1.42 ± 0.84	0.138	0.87 ± 0.66	0.017
> Day 6	1.99 ± 0.65		1.88 ± 0.86	
Duration of shedding				
≤ 7 days	1.63 ± 0.83	0.466	1.54 ± 0.98	0.349
>7 days	1.94 ± 0.65		1.07 ± 0.68	
Total oocysts shed				
≤10 ⁶	1.35 ± 0.65	0.062	1.20 ± 0.56	0.394
>10 ⁶	2.05 ± 0.76		1.59 ± 1.14	