

Supplementary tables and figures

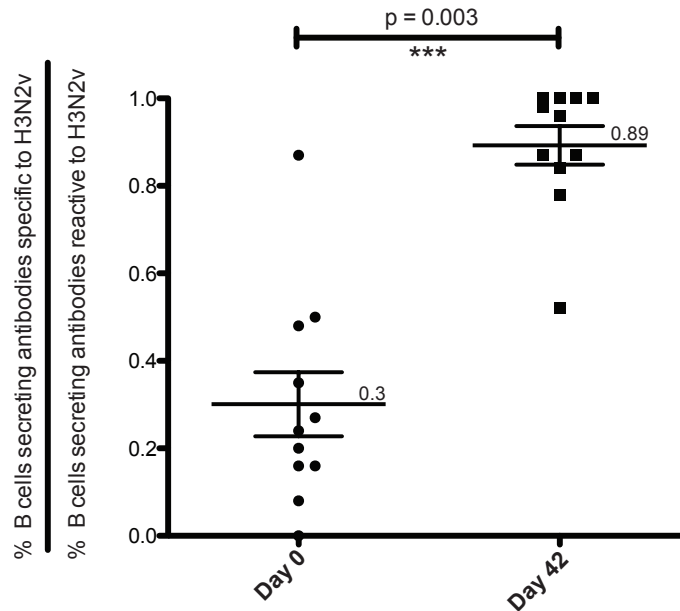


Figure S1. Frequency of influenza A H3N2v HA-specific B cells from 11 vaccinated donors.

PBMCs from day 0 or day 42 post-vaccination were transformed with EBV in 384-well plates and supernatants were screened by ELISA for the presence of antibodies to H3N2v A/Minnesota/11/2010 HA or HAs from two seasonal strains: A/Victoria/361/2011 or A/Wisconsin/67/2005. The graph represents data from 11 donors, showing the ratio of B cells secreting antibodies specific to H3N2v HA that did not cross-react with HA from seasonal strains to the total B cells secreting antibody reactive to H3N2v. The percentage of H3N2v specific or reactive B cells were calculated by the number of wells with ODs greater than 2 times standard deviation above background divided by total number of transformed B cells $\times 100$. The error bars represent standard error of means and the p value was calculated by Wilcoxon test

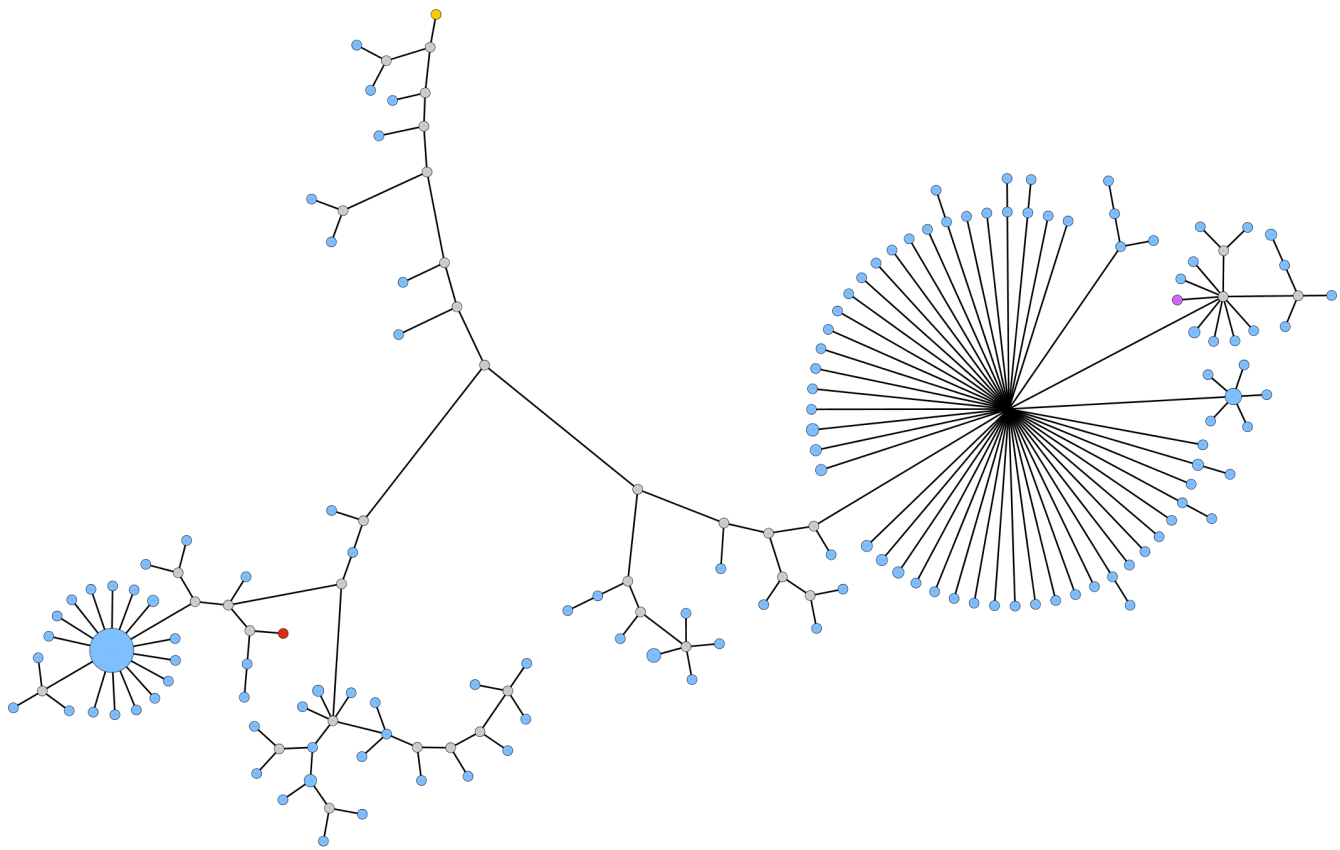


Figure S2. Lineage network analysis for variants of H3v reactive human monoclonal antibody H3v-104 obtained from the same donor. First, antibody heavy chain variable gene sequences were obtained from PBMCs collected on day 0, 7, or 42 after immunization, and those sharing use of the V_H1-69 and J_H4 gene segments that encode H3v-104 were identified. Then, CD-HIT was used to identify the HCDR3 sequences of 296 sequences that clustered within 85% identity with the HCDR3 sequence of H3v-104. We built a Phylip lineage using the alakazam and shazam packages of the Change-O software suite, and visualized the network in Cytoscape.

In the network shown, the gold node at the top of the figure represents the inferred germline sequence. Gray nodes are inferred intermediate sequences. The violet node (toward the right) represents a sequence observed via sequencing B cells from this donor at day 0 (the day of immunization). The blue nodes represent sequences observed via sequencing B cells from day 7 after immunization. The red node represents the mAb H3-v104 obtained by B cell transformation and hybridoma formation on day 42 after immunization. The size of a node represents the count of sequences observed in the data set.

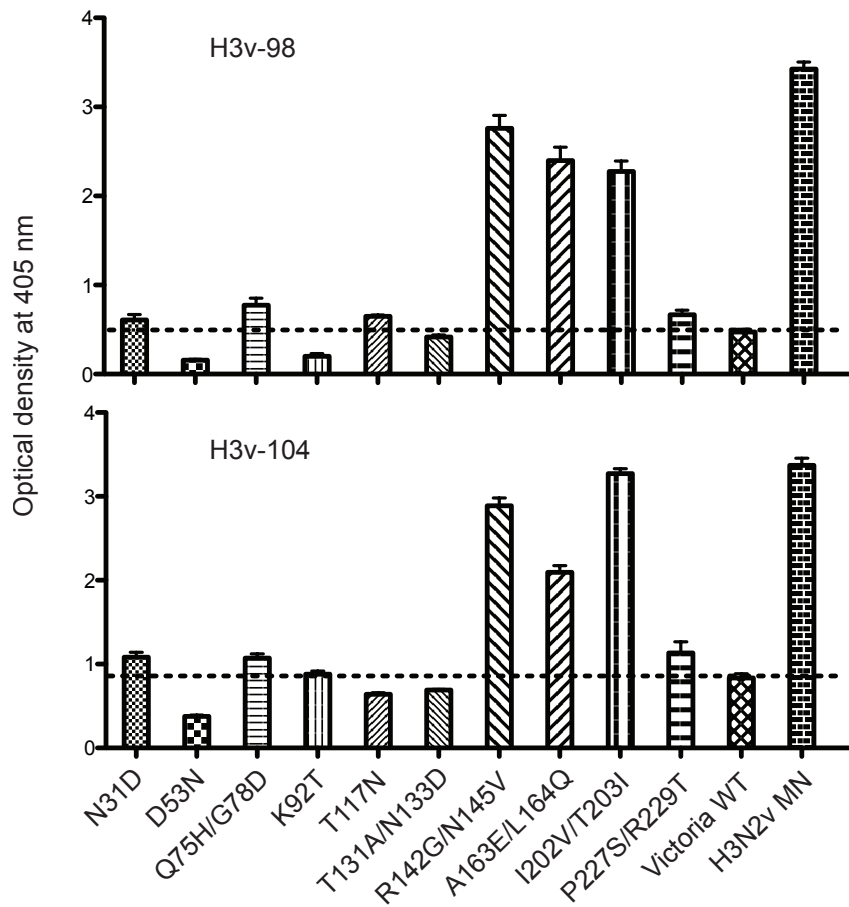


Figure S3. Binding of H3v-specific mAbs to Victoria *wild-type* and HA mutants

17 variant-specific polymorphisms were introduced into Victoria HA as single or double mutants. The graph shows binding optical densities (O.D.s) measured by ELISA for mAbs H3v-98 and H3v-104 with the Victoria HA mutants at antibody concentration of 10 $\mu\text{g}/\text{mL}$. Three double-mutant HA molecules, Victoria I202V/T203I, A163E/L164Q or R142G/N144V, enhanced binding to mAbs H3v-98 and H3v-104 that otherwise did not bind to the wild-type Victoria HA. The dotted line represents the baseline level of binding to wild-type Victoria HA.

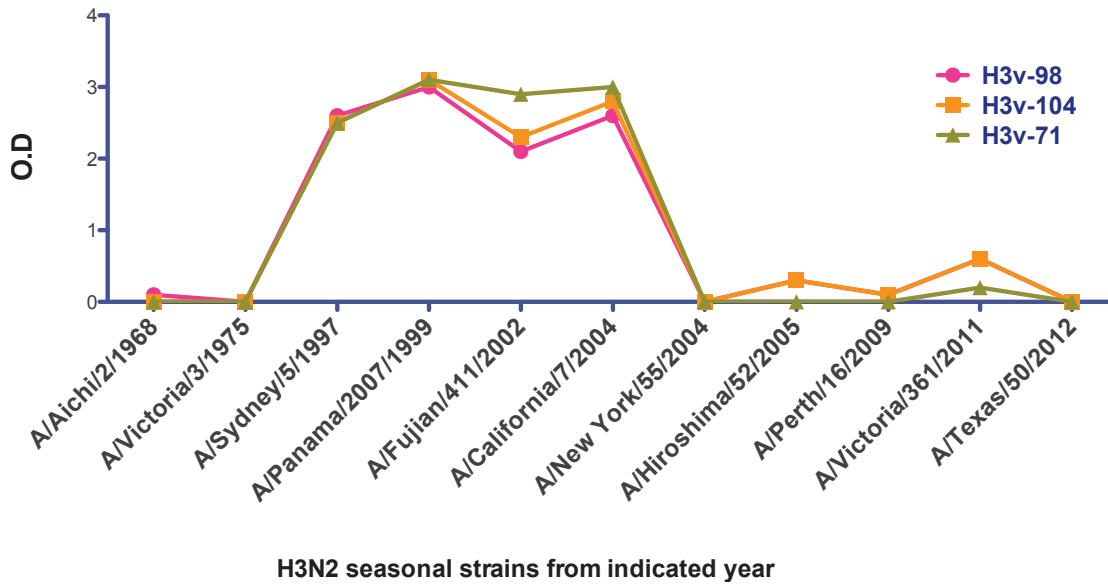


Figure S4. Binding to HA from H3N2 seasonal strains. The mAbs were tested for binding against HAs derived from 10 seasonal strains that circulated between 1968 to 2012 by ELISA at a single concentration of the antibody (0.3 $\mu\text{g}/\text{mL}$). The O.D. values for H3v-98 (pink), H3v-104 (orange) or H3v-71 (green) are indicated on the y-axis and the HA from H3N2 strains used for binding are indicated on the x-axis.

| Table S1. Neutralization titers for four H3v-reactive human mAbs against swine IAVs | | | | |
|---|---|---|--|------------------------------|
| Monoclonal antibody | Lowest concentration of the mAb that can neutralize the virus (µg/mL) | | | |
| | Cluster I A/Swine/Texas/ 4199-2/98 | Cluster II A/Swine/Colorado/ 23619/99 | Cluster III A/Swine/Oklahoma/ 18089/99 | Cluster IV A/Ohio/13/2012 |
| H3v-71 | > | 0.12 | > | 0.12 |
| H3v-98 | > | 0.31 | 0.16 | 0.16 |
| H3v-104 | > | 0.08 | 0.03 | 0.01 |
| H3v-45 | > | 0.63 | 10.0 | 1.25 |

Table S1. Neutralization titers for four H3v-reactive human mAbs against swine IAVs.

H3v mAbs were tested for neutralizing activity against four H3N2 strains representing each antigenic cluster circulating in swine, A/Swine/Texas/4199-2/98 (cluster I), A/Swine/Colorado/23619/99 (cluster II), A/Swine/Oklahoma/18089/99 (cluster III) and A/Ohio/13/2012 (cluster IV). The table shows the lowest concentration of the antibody (µg/mL) that exhibited neutralizing activity against each strain. The > symbol indicates neutralization was not detected at the maximum concentration tested (10 µg/mL).

| Table S2. Binding breadth for five H3v-reactive antibodies | | | | | | |
|---|--|--|------------|-----------|------------|-----------|
| Subtype | HA from IAV strains | Optical density at 405 nm for indicated mAb | | | | |
| | | H3v-98 | 104 | 71 | 126 | 81 |
| H3N2v | A/Minnesota/11/2010 | 2.29 | 2.43 | 2.20 | 2.21 | 2.12 |
| H1N1 | A/Solomon islands/03/2006 | 0.10 | 0.09 | 0.09 | 0.10 | 0.10 |
| H1N1 | A/Texas/36/1991 | 0.10 | 0.10 | 0.11 | 0.09 | 0.10 |
| H2N2 | A/Japan/305/1957 | 0.10 | 0.10 | 0.09 | 0.10 | 0.10 |
| H4N6 | A/duck/Czechoslovakia/1956 | 0.12 | 0.10 | 0.10 | 0.12 | 0.11 |
| H5N1 | A/Vietnam/1203/2004 | 0.12 | 0.11 | 0.09 | 0.11 | 0.09 |
| H6N1 | A/teal/Hong Kong/W312/1997 | 0.13 | 0.11 | 0.09 | 0.11 | 0.10 |
| H7N7 | A/Netherlands/219/2003 | 0.10 | 0.09 | 0.09 | 0.10 | 0.10 |
| H7N2 | A/New York/107/2003 | 0.09 | 0.10 | 0.09 | 0.09 | 0.09 |
| H7N9 | A/Shanghai/2/3013 | 0.10 | 0.11 | 0.09 | 0.10 | 0.10 |
| H9N2 | A/chicken/HongKong/G9/1997 | 0.12 | 0.10 | 0.09 | 0.10 | 0.12 |
| H9N2 | A/Hong Kong/1073/1999 | 0.15 | 0.09 | 0.12 | 0.09 | 0.09 |
| H10N7 | A/chicken/Germany/N/1949 | 0.22 | 0.22 | 0.14 | 0.17 | 0.14 |
| H13N6 | A/gull/Maryland/704/1977 | 0.11 | 0.10 | 0.10 | 0.11 | 0.10 |
| H14N5 | A/mallard duck/Astrakhan/263/1982 | 0.15 | 0.16 | 0.12 | 0.11 | 0.11 |
| H15N8 | A/shearwater/Western Australia/2576/1979 | 0.15 | 0.12 | 0.09 | 0.11 | 0.10 |
| H16N3 | A/black-headed gull/Sweden/4/1999 | 0.12 | 0.12 | 0.09 | 0.10 | 0.10 |

Table S2. Binding of H3v-specific mAbs to HA from other subtypes. Five H3v-specific mAbs were tested for binding against HAs derived from strains belonging to 12 other IAV subtypes by ELISA at a single concentration of the antibody (1 µg/mL). The mAbs did not show significant binding to HA molecules from other HA subtypes.

Table S3. Next generation sequence analysis identification of additional members of clonal lineages based on the antibody gene sequences for representative mAbs.

Count of related sequences by time point

| Hybridoma | Day 0 | Day 7 | Day 21 | Day 28 | Day 42 | Total |
|------------------|-------|--------|--------|--------|--------|-------|
| Donor 41 H3v-104 | 1 | 295 | 0 | 0 | 0 | 296 |
| Donor 10 H3v-47 | 0 | 0 | 0 | 0 | 0 | 0 |
| Donor 27 H3v-126 | 0 | 0 | 0 | 0 | 0 | 0 |
| Donor 37 H3v-71 | 0 | 0 | 0 | 0 | 0 | 0 |
| Donor 37 H3v-98 | 0 | 0 | 0 | 0 | 0 | 0 |
| Donor 37 H3v-81 | 1 | 18,928 | 1 | 0 | 0 | 18930 |

Out of indicated number of V/J gene segment matches

| Hybridoma | Day 0 | Day 7 | Day 21 | Day 28 | Day 42 | Total |
|------------------|--------|--------|--------|--------|--------|--------|
| Donor 41 H3v-104 | 5,775 | 30,679 | 7,114 | 11,757 | 8,042 | 63367 |
| Donor 10 H3v-47 | 695 | 6,637 | 3,619 | 4,672 | 1,059 | 16682 |
| Donor 27 H3v-126 | 21,332 | 17,197 | 19,506 | 25,674 | 45,999 | 129708 |
| Donor 37 H3v-71 | 1,965 | 1,379 | 3,545 | 2,002 | 2,413 | 11304 |
| Donor 37 H3v-98 | 2,617 | 686 | 4,663 | 3,226 | 3,844 | 15036 |
| Donor 37 H3v-81 | 129 | 28,047 | 50 | 65 | 141 | 28432 |

Related sequences as percent of V/J recombination event, by time point

| Hybridoma | Day 0 | Day 7 | Day 21 | Day 28 | Day 42 |
|------------------|-------|--------|--------|--------|--------|
| Donor 41 H3v-104 | 0.02% | 0.96% | 0% | 0% | 0% |
| Donor 10 H3v-47 | 0% | 0% | 0% | 0% | 0% |
| Donor 27 H3v-126 | 0% | 0% | 0% | 0% | 0% |
| Donor 37 H3v-71 | 0% | 0% | 0% | 0% | 0% |
| Donor 37 H3v-98 | 0% | 0% | 0% | 0% | 0% |
| Donor 37 H3v-81 | 0.78% | 67.49% | 2.00% | 0% | 0% |

Table S4. Amino acid sequence alignment for members of the H3v-104 clonal lineage

| | | | | | | | | | | | | | | | | | | | | | | | | | | | | | | | | | | | | | | | | | | | | | | | | | | | | | | | | | | | | | |
|--------------------|---|---|---|---|---|---|---|---|---|---|---|---|---|---|---|---|---|---|---|---|---|---|---|---|---|---|---|---|---|---|---|---|---|---|---|---|---|---|---|-----|---|---|---|---|---|---|---|---|---|---|---|---|---|---|---|---|---|---|---|----|----|
| H104 | - | S | V | K | V | S | C | R | A | S | G | G | T | L | P | T | Y | A | I | N | W | V | R | Q | A | P | G | Q | G | L | E | W | M | G | I | F | S | T | F | G | A | A | N | Y | A | Q | K | F | Q | D | R | V | T | I | S | A | D | D | S | 59 | |
| 13124-13108_5443_7 | A | S | V | K | V | S | C | K | A | S | G | G | T | F | R | T | Y | A | I | S | W | V | R | Q | A | P | G | Q | G | L | E | W | M | G | I | M | S | T | F | G | S | A | N | Y | A | Q | R | F | Q | G | R | V | T | I | T | E | D | E | S | 60 | |
| 13124-17064_7911_7 | A | S | V | K | V | S | C | K | A | S | G | G | T | F | R | T | Y | A | I | S | W | V | R | Q | A | P | G | Q | G | L | E | W | M | G | I | M | S | T | F | G | S | A | N | Y | A | Q | R | F | Q | G | R | V | T | I | T | E | D | E | S | 60 | |
| 13124-17408_2631_7 | A | S | V | K | V | S | C | K | A | S | G | G | T | F | R | T | Y | A | I | S | W | V | R | Q | A | P | G | Q | G | L | E | W | M | G | I | M | S | T | F | G | S | A | N | Y | A | Q | R | F | Q | G | R | V | T | I | T | E | D | E | S | 60 | |
| 13124-8638_3852_7 | A | S | V | K | V | S | C | K | A | S | G | G | T | F | R | T | Y | A | I | S | W | V | R | Q | A | P | G | Q | G | L | E | W | M | G | I | M | S | T | F | G | S | A | N | Y | A | Q | R | F | Q | G | R | V | T | I | T | E | D | E | S | 60 | |
| 13124-13096_5429_7 | A | S | V | K | V | S | C | K | A | S | G | G | T | F | R | T | Y | A | I | S | W | V | R | Q | A | P | G | Q | G | L | E | W | M | G | I | M | S | T | F | G | S | A | N | Y | A | Q | R | F | Q | G | R | V | T | I | T | E | D | E | S | 60 | |
| 13124-11655_2473_7 | A | S | V | K | V | S | C | K | A | S | G | G | T | F | R | T | Y | A | I | S | W | V | R | Q | A | P | G | Q | G | L | E | W | M | G | I | M | S | T | F | G | S | A | N | Y | A | Q | R | F | Q | G | R | V | T | I | T | E | D | E | S | 60 | |
| 13124-6426_6714_7 | A | S | V | K | V | S | C | K | A | S | G | G | T | L | P | T | Y | A | V | N | W | V | R | Q | A | P | G | Q | G | L | E | W | M | G | I | F | S | A | F | G | S | A | N | Y | A | Q | K | F | Q | G | R | L | T | I | T | E | D | D | S | 60 | |
| 13124-3939_25072_7 | A | S | V | K | V | S | C | K | A | S | G | G | T | F | R | T | Y | A | I | S | W | V | R | Q | A | P | G | Q | G | L | E | W | M | G | I | M | S | T | F | G | S | A | N | Y | A | Q | R | F | Q | G | R | V | T | I | T | E | D | E | S | 60 | |
| 13124-4626_10993_7 | A | S | V | K | V | S | C | K | A | S | G | G | T | F | R | T | Y | A | I | S | W | V | R | Q | A | P | G | Q | G | L | E | W | M | G | I | M | S | T | F | G | S | A | N | Y | A | Q | R | F | Q | G | R | V | T | I | T | E | D | E | S | 60 | |
| 13124-11567_8443_7 | A | S | V | K | V | S | C | K | A | S | G | G | T | F | R | T | Y | A | I | S | W | V | R | Q | A | P | G | Q | G | L | E | W | M | G | I | M | S | T | F | G | S | A | N | Y | A | Q | R | F | Q | G | R | V | T | I | T | E | D | E | S | 60 | |
| 13124-8121_12403_7 | A | S | V | K | V | S | C | K | A | S | G | G | T | F | R | T | Y | A | I | S | W | V | R | Q | A | P | G | Q | G | L | E | W | M | G | I | M | S | T | F | G | S | A | N | Y | A | Q | R | F | Q | G | R | V | T | I | T | E | D | E | S | 60 | |
| 13124-7044_12701_7 | A | S | V | K | V | S | C | K | A | S | G | G | T | F | R | T | Y | A | I | S | W | V | R | Q | A | P | G | Q | G | L | E | W | M | G | I | M | S | T | F | G | S | A | N | Y | A | Q | R | F | Q | G | R | V | T | I | T | E | D | E | S | 60 | |
| 13124-8117_15788_7 | A | S | V | K | V | S | C | K | A | S | G | G | T | F | R | T | Y | A | I | S | W | V | R | Q | A | P | G | Q | G | L | E | W | M | G | I | M | S | T | F | G | S | A | N | Y | A | Q | R | F | Q | G | R | V | T | I | T | E | D | E | S | 60 | |
| 13124-7893_13223_7 | A | S | V | K | V | S | C | K | A | S | G | G | T | F | R | T | Y | A | I | S | W | V | R | Q | A | P | G | Q | G | L | E | W | M | G | I | M | S | T | F | G | S | A | N | Y | A | Q | R | F | Q | G | R | V | T | I | T | E | D | E | S | 60 | |
| 13124-3158_15786_7 | A | S | V | K | V | S | C | K | A | S | G | G | T | F | R | T | Y | A | I | S | W | V | R | Q | A | P | G | Q | G | L | E | W | M | G | I | M | S | T | F | G | S | A | N | Y | A | Q | R | F | Q | G | R | V | T | I | T | E | D | E | S | 60 | |
| 13124-8815_14788_7 | A | S | V | K | V | S | C | K | A | S | G | G | T | F | R | T | Y | A | I | S | W | V | R | Q | A | P | G | Q | G | L | E | W | M | G | I | M | S | T | F | G | S | A | N | Y | A | Q | R | F | Q | G | R | V | T | I | T | E | D | E | S | 60 | |
| 13124-2327_12778_7 | A | S | V | K | V | S | C | K | A | S | G | G | T | F | R | T | Y | A | I | S | W | V | R | Q | A | P | G | Q | G | L | E | W | M | G | I | M | S | T | F | G | S | A | N | Y | A | Q | R | F | Q | G | R | V | T | I | T | E | D | E | S | 60 | |
| 13124-8105_15803_7 | A | S | V | K | V | S | C | K | A | S | G | G | T | F | R | T | Y | A | I | S | W | V | R | Q | A | P | G | Q | G | L | E | W | M | G | I | M | S | T | F | G | S | A | N | Y | A | Q | R | F | Q | G | R | V | T | I | T | E | D | E | S | 60 | |
| 13124-9291_18407_7 | A | S | V | K | V | S | C | K | A | S | G | G | T | F | R | T | Y | A | I | S | W | V | R | Q | A | P | G | Q | G | L | E | W | M | G | I | M | S | T | F | G | S | A | N | Y | A | Q | R | F | Q | G | R | V | T | I | T | E | D | E | S | 60 | |
| 13124-9311_18403_7 | A | S | V | K | V | S | C | K | A | S | G | G | T | F | R | T | Y | A | I | S | W | V | R | Q | A | P | G | Q | G | L | E | W | M | G | I | M | S | T | F | G | S | A | N | Y | A | Q | R | F | Q | G | R | V | T | I | T | E | D | E | S | 60 | |
| 13124-6719_23710_7 | A | S | V | K | V | S | C | K | A | S | G | G | T | F | R | T | Y | A | I | N | W | V | R | Q | A | P | G | Q | G | L | E | W | M | G | V | I | M | S | T | F | G | P | T | N | Y | A | Q | R | F | Q | G | R | L | T | I | T | E | D | D | S | 60 |
| 13124-5057_16929_7 | A | S | V | K | V | S | C | K | A | S | G | G | T | F | R | T | Y | A | I | S | W | V | R | Q | A | P | G | Q | G | L | E | W | M | G | I | M | S | T | F | G | S | A | N | Y | A | Q | R | F | Q | G | R | V | T | I | T | E | D | E | S | 60 | |
| 13124-0447_20106_7 | A | S | V | K | V | S | C | K | A | S | G | G | T | F | R | T | Y | A | I | S | W | V | R | Q | A | P | G | Q | G | L | E | W | M | G | I | M | S | T | F | G | S | A | N | Y | A | Q | R | F | Q | G | R | V | T | I | T | E | D | E | S | 60 | |
| 13124-9291_18407_7 | A | S | V | K | V | S | C | K | A | S | G | G | T | F | R | T | Y | A | I | S | W | V | R | Q | A | P | G | Q | G | L | E | W | M | G | I | M | S | T | F | G | S | A | N | Y | A | Q | R | F | Q | G | R | V | T | I | T | E | D | E | S | 60 | |
| 13124-6421_16382_7 | A | S | V | K | V | S | C | K | A | S | G | G | T | F | R | T | Y | A | I | S | W | V | R | Q | A | P | G | Q | G | L | E | W | M | G | I | M | S | T | F | G | S | A | N | Y | A | Q | R | F | Q | G | R | V | T | I | T | E | D | E | S | 60 | |
| 13124-0445_20088_7 | A | S | V | K | V | S | C | K | A | S | G | G | T | F | R | T | Y | A | I | S | W | V | R | Q | A | P | G | Q | G | L | E | W | M | G | I | M | S | T | F | G | S | A | N | Y | A | Q | R | F | Q | G | R | V | T | I | T | E | D | E | S | 60 | |
| 13124-9924_23840_7 | A | S | V | K | V | S | C | K | A | S | G | G | T | L | P | T | Y | A | V | N | W | V | R | Q | A | P | G | Q | G | L | E | W | M | G | I | F | S | T | F | G | S | A | N | Y | A | Q | K | F | Q | G | R | L | T | I | T | E | D | D | S | 60 | |
| 13124-9837_20019_7 | - | S | V | K | V | S | C | K | A | S | G | G | T | F | R | T | Y | A | I | S | W | V | R | Q | A | P | G | Q | G | L | E | W | M | G | I | M | S | T | F | G | S | A | N | Y | A | Q | R | F | Q | G | R | V | T | I | T | E | D | E | S | 59 | |
| 13124-6959_21421_7 | A | S | V | K | V | S | C | K | A | S | G | G | T | F | R | T | Y | A | I | S | W | V | R | Q | A | P | G | Q | G | L | E | W | M | G | I | M | S | T | F | G | S | A | N | Y | A | Q | R | F | Q | G | R | V | T | I | T | E | D | E | S | 60 | |
| 13124-8236_14734_7 | A | S | V | K | V | S | C | K | A | S | G | G | T | F | R | T | Y | A | I | S | W | V | R | Q | A | P | G | Q | G | L | E | W | M | G | I | M | S | T | F | G</ | | | | | | | | | | | | | | | | | | | | | |

13124-11897_8962_7 ASVKVSCKASGGT**L**TTYA INWVRQAPGGGLEWMGGI**F**STFGA**A**NYAQ**K**FQGRVIT**A**DD**S** 60
13124-4170_11198_7 ASVKVSCKASGGTFRTYA I**G**WVRQAPGGGLEWMGGI**M**STFGS**A**NYAQ**R**FQGRVIT**E**DES 60
13124-7859_11814_7 ASVKVSCKASGGT**F**DKS**A**I**I**WVRQAPGGGL**D**WMGGI**V**PI**F**GT**A**TYAQ**K**FQGRVIT**A**DES 60
13124-2848_20542_7 ASVKVSCKASGGT**L**PTYA**V**NWVRQAPGGGLEWMGGI**F**STFGS**A**NYAQ**K**FQGR**L**IT**E**DES 60
13124-0540_24508_7 ASVKVSCKASGGT**L**PTYA**V**NWVRQAPGGGLEWMGGI**F**STFGS**A**NYAQ**K**FQGR**L**IT**E**DES 60
13124-4107_12327_7 ASVKVSCKASGGTFRTYA I**S**WVRQAPGGGLEWMGGI**M**STFGS**A**NYAQ**R**FQGRVIT**E**DES 60
13124-9359_11629_7 ASVKVSCKASGGTFRTYA I**G**WVRQAPGGGLEWMGGI**M**STFGS**A**NYAQ**R**FQGRVIT**E**DES 60
13124-4870_23583_7 ASVKVSCKASGGTFRTYA I**S**WVRQAPGGGLEWMGGI**M**STFGS**A**NYAQ**R**FQGRVIT**E**DES 60
13124-4078_18346_7 ASVKVSCKASGGTFRTYA I**S**WVRQAPGGGLEWMGGI**M**STFGS**A**NYAQ**R**FQGRVIT**E**DES 60
13124-9614_9960_7 ASVKVSCKASGGTFRTYA I**S**WVRQAPGGGLEWMGGI**M**STFGS**A**NY**E**Q**R**FQGRVIT**E**DES 60
13124-2552_10161_7 ASVKVSCKASGGTFRTYA I**S**WVRQAPGGGLEWMGGI**M**STFGS**A**NYAQ**R**FQGRVIT**E**DES 60
13124-11041_6747_7 ASVKVSCKASGGTFRTYA I**S**WVRQAPGGGLEWMGGI**M**STFGS**V**NYAQ**R**FQGRVIT**E**DES 60
13124-8185_18147_7 ASVKVSCKASGGTFRTYA I**S**WVRQAPGGGLEWMGGI**M**STFGS**A**NYAQ**R**FQGRVIT**E**DES 60
13124-8027_13180_7 ASVKVSCKASGG**D****L**PTYA I**N**WVRQAPGGGLEWMGGI**F**STFG**A**NYAQ**K**FQGRVIT**S**AD**S** 60
13124-4111_9790_7 ASVKVSCKASGGTFRTYA I**S**WVRQAPGGGLEWMGGI**M**STFGS**A**NYAQ**R**FQGRVIT**E**DES 60
13124-4128_9784_7 ASVKVSCKASGGTFRTYA I**S**WVRQAPGGGLEWMGGI**M**STFGS**A**NYAQ**R**FQGRVIT**E**DES 60
13124-2862_22915_7 ASVKVSCKASGGTFRTYA I**S**WVRQAPGGGLEWMGGI**M**STFGS**A**NYAQ**R**FQGRVIT**E**DES 60
13124-14791_9711_7 ASVKVSCKASGGTFRTYA I**S**WVRQAPGGGLEWMGGI**M**STFGS**A**NYAQ**R**FQGRVIT**E**DES 60
13124-5213_15196_7 ASVKVSCKASGGTFRTYA I**S**WVRQAPGGGLEWMGGI**M**STFGS**A**NYAQ**R**FQGRVIT**E**DES 60
13124-2079_15900_7 ASVKVSCKASGGTFRTYA I**S**WVRQAPGGGLEWMGGI**M**STFGS**A**NYAQ**R**FQGRVIT**E**DES 60
13124-13540_4548_7 ASVKVSCKASGGT**L**PTYA**V**NWVRQAPGGGLEWMGGI**F**ST**L**GS**A**NYAQ**K**FQGR**L**IT**E**DES 60
13124-2382_16449_7 ASVKVSCKASGGTFRTYA I**S**WVRQAPGGGLEWMGGI**M**STFGS**A**NYAQ**R**C**Q**GRVIT**E**DES 60
13124-4993_22878_7 -**S**VKVSCKASGGTFRTYA I**S**WVRQAPGGGLEWMGGI**M**STFGS**A**NYAQ**R**FQGRVIT**E**DES 59
13124-4437_23388_7 ASVKVSCKASGGTFRTYA I**S**WVRQAPGGGLEWMGGI**M**STFGS**A**NYAQ**R**FQGRVIT**E**DES 60
13124-8008_13185_7 ASVKVSCKASGG**D****L**PTYA I**N**WVRQAPGGGLEWMGGI**F**STFG**A**NYAQ**K**FQGRVIT**S**AD**S** 60
13124-7376_16321_7 ASVKVSCKASGGTFRTYA I**S**WVRQAPGGGLEWMGGI**M**STFGS**A**NYAQ**R**FQGRVIT**E**DES 60
13124-3709_19439_7 ASVKVSCKASGGT**L**TTYA I**N**WVRQAPGGGLEWMGGI**F**STFG**A**NYAQ**K**FQ**D**RVIT**A**DD**S** 60
13124-4765_15700_7 **G****L****M**KVSCKASGGTFRTYA I**S**WVRQAPGGGLEWMGGI**M**STFGS**A**NYAQ**R**FQGRVIT**E**DES 60
13124-9639_24880_7 ASVKVSCKASGGTFRTYA I**S**WVRQAPGGGLEWMGGI**M**STFGS**A**NYAQ**R**FQGRVIT**E**DES 60
13124-8292_21235_7 ASVKVSCKASGGTFRTYA I**S**WVRQAPGGGLEWMGGI**M**STFGS**A**NYAQ**R**FQGRVIT**E**DES 60
13124-9713_21352_7 ASVKVSCKASG**Y****T****F****T****G****D****N****M****H**WVRQAPGGGLEWMGGI**M**STFGS**A**NYAQ**R**FQGRVIT**E**DES 60
13124-9427_20019_7 ASVKVSCKASGGTFRTYA I**S**WVRQAPGGGLEWMGGI**M**STFGS**A**NYAQ**R**FQGRVIT**E**DES 60
13124-5040_16938_7 ASVKVSCKASGGTFRTYA I**S**WVRQAPGGGLEWMGGI**M**STFGS**A**NYAQ**R**FQGRVIT**E**DES 60
13124-8347_21942_7 ASVKVSCKASGGT**L**PTYA**V**NWVRQAPGGGLEWMGGI**F**STFGS**A**NYAQ**K**FQGR**L**IT**E**DES 60
13124-5777_22947_7 ASVKVSCKASGGT**L**PTYA**V**NWVRQAPGGGLEWMGGI**F**STFGS**A**NYAQ**K**FQGR**L**IT**E**DES 60
13124-4397_9065_7 ASVKVSCKASGGT**L**PTYA**V**NWVRQAPGGGLEWMGGI**F**STFGS**A**NYAQ**K**FQGR**L**IT**E**DES 60
13124-3931_10267_7 ASVKVSCKASGGTFRTYA I**S**WVRQAPGGGLEWMGGI**M**STFGS**A**NYAQ**R**FQGRVIT**E**DES 60
13124-5777_18414_7 ASVKVSCKASGGT**L**PTYA**V**NWVRQAPGGGLEWMGGI**F**STFGS**A**NYAQ**K**FQGR**L**IT**E**DES 60
13124-2961_10599_7 ASVKVSCKASGGT**F**STYA I**I**WVRQAPGGGLEW**I**GGI**I**PI**F**GT**A**NYAQ**R**FQGRVIT**E**DES 60
13124-4833_13428_7 ASVKVSCKASGGTFRTYA I**S**WVRQAPGGGLEWMGGI**M**STFGS**A**NYAQ**R**FQGRVIT**E**DES 60
13124-7290_10049_7 ASVKVSCKASGGTFRTYA I**S**WVRQAPGGGLEWMGGI**M**STFGS**A**NYAQ**R**FQGRVIT**E**DES 60
13124-10984_7775_7 ASVKVSCKASGGTFRTYA I**S**WVRQAPGGGLEWMGGI**M**STFGS**A**NYAQ**R**FQGRVIT**E**DES 60
13124-5676_10490_7 ASVKVSCKASGGTFRTYA I**S**WVRQAPGG**R**LEWMGGI**M**S**A**FGS**A**NYAQ**R**FQGRVIT**E**DES 60
13124-4431_19862_7 ASVKVSCKASGGTFRTYA I**S**WVRQAPGGGLEWMGGI**M**STFGS**A**NYAQ**R**FQGRVIT**E**DES 60
13124-8438_21841_7 ASVKVSCKASGGT**L**PTYA**V**NWVRQAPGGGLEWMGGI**F**STFGS**A**NYAQ**K**FQGR**L**IT**E**DES 60
13124-4798_9013_7 -**S**VKVSCKASGGTFRTYA I**S**WVRQAPGGGLEWMGGI**M**STFGS**A**NYAQ**R**FQGRVIT**E**DES 59
13124-13204_9680_7 -**S**VKVSCKASGGTFRTYA I**S**WVRQAPGGGLEWMGGI**M**STFGS**A**NYAQ**R**FQGRVIT**E**DES 59
13124-12757_5026_7 ASVKVSCKASGGT**L**PTYA**V**NWVRQAPGGGLEWMGGI**F**ST**F**D**S**ANYAQ**K**FQGR**L**IT**E**DES 60
13124-13220_9689_7 -**S**VKVSCKASGGTFRTYA I**S**WVRQAPGGGLEWMGGI**M**STFGS**A**NYAQ**R**FQGRVIT**E**DES 59
13124-7770_14522_7 ASVKVSCKASGGTFRTYA I**S**WVRQAPGGGLEWMGGI**M**STFGS**A**NYAQ**R**FQGRVIT**E**DES 60
13124-7560_16450_7 ASVKVSCKASGGTFRTYA I**S**WVRQAPGGGLEWMGGI**M**STFGS**A**NYAQ**R**FQGRVIT**E**DES 60
13124-4447_14799_7 ASVKVSCKASGGT**L**TTYA I**N**WVRQAPGGGLEWMGGI**F**STFG**A**NYAQ**K**FQGRVIT**A**DD**S** 60
13124-7855_8304_7 ASVKVSCKASG**D**TFRTYA I**N**WVRQAPGGGLEWMGGI**M**STFG**P**P**S**YA**R**FQGRVIT**A**DES 60
13124-8448_21825_7 ASVKVSCKASGGT**L**PTYA**V**NWVRQAPGGGLEWMGGI**F**STFGS**A**NYAQ**K**FQGR**L**IT**E**DES 60
13124-9376_12733_7 **A****L****V**KVSCKASGGTFRTYA I**S**WVRQAPGGGLEWMGGI**M**STFGS**A**NYAQ**R**FQGRVIT**E**DES 60
13124-0561_12859_7 ASVKVSCKASGGT**L**PTYA**V**NWVRQAPGGGLEWMGGI**F**STFGS**A**NYAQ**K**FQGR**L**IT**E**DES 60
13124-18447_9188_7 ASVKVSCKASGGTFRTYA I**S**WVRQAPGGGLEWMGGI**M**STFGS**A**NYAQ**R**FQGRVIT**E**DES 60
13124-3651_15165_7 ASVKVSCKASGGT**L**TTYA I**N**WVRQAPGGGLEWMGGI**T****F**STFG**A**NYAQ**K**FQGS**V**IT**A**DD**S** 60
13124-8913_15798_7 ASVKVSCKASGGT**L**PTYA**V**NWVRQAPGGGLEWMGGI**F**STFGS**A**NYAQ**K**FQGR**L**IT**E**DES 60
13124-4025_16095_7 ASVKVSCKASGGT**F**SKS**A**I**I**WVRQAPGG**R**LEWMGGI**V**PI**F**GT**A**NYAQ**K**FQGRVIT**A**DES 60
13124-5309_16512_7 ASVKVSCKASGGT**L**PTYA**V**NWVRQAPGGGLEWMGGI**F**STFGS**A**NYAQ**K**FQGR**L**IT**E**DES 60
13124-3780_18957_7 ASVKVSCKASGGT**L**PTYA**V**N**L**RQAPGGGLEWMGGI**F**STFGS**A**NYAQ**K**FQGR**L**IT**E**DES 60
13124-1006_19809_7 ASVKVSCKASGGTFRTYA I**S**WVRQAPGGGLEWMGGI**M**STFGS**A**NYAQ**R**FQGRVIT**E**DES 60
13124-6574_14673_7 ASVKVSCKASGGTFRTYA I**S**WVRQAPGGGLEWMGGI**M**STFGS**A**NYAQ**G**FQGRVIT**E**DES 60
13124-0469_13993_7 ASVKVSCKASGGTFRTYA I**S**WVRQAPGGGLEWMGGI**M**STFGS**A**NYAQ**R**FQGRVIT**E**DES 60
13124-2633_17804_7 ASVKVSCKASGGT**L**PTYA**V**NWVRQAPGGGLEWMGGI**F**STFGS**A**NYAQ**K**FQGR**L**IT**E**DES 60
13124-5230_13315_7 -**S**VKVSCKASGGTFRTYA I**S**WVRQA**T**GQGLEWMGGI**M**STFGS**A**NYAQ**R**FQGRVIT**E**DES 59
13124-6595_14658_7 ASVKVSCKASGGTFRTYA I**S**WVRQAPGGGLEWMGGI**M**STFGS**A**NYAQ**G**FQGRVIT**E**DES 60
13124-3611_18936_7 ASVKVSCKASGGTFRTYA I**S**WVRQAPGGGLEWMGGI**M**STFGS**A**NYAQ**R**FQGRVIT**E**DES 60
13124-8388_23214_7 ASVKVSCKASGGTFRTYA I**S**WVRQAPGGGLEWMGGI**M**STFGS**A**NYAQ**R**FQGRVIT**E**DES 60
13124-1740_10157_7 ASVKVSCKASGGTFRTYA I**S**WVRQAPGGGLEWMGGI**M**STFGS**A**NYAQ**R**FQGRVIT**E**DES 60
13124-9729_17599_7 ASVKVSCKASGGT**L**PTYA**V**NWVRQAPGGGLEWMGGI**F**STFGS**A**NYAQ**K**FQGR**L**IT**E**DES 60
13124-5134_17304_7 ASVKVSCKASGGT**L**TTYA I**N**WVRQAPGGGLEWMGGI**F**STFG**A**NYAQ**K**FQGRVIT**A**DD**S** 60
13124-0984_22407_7 ASVKVSCKASGGT**L**PTYA**V**NWVRQAPGGGLEWMGGI**F**STFGS**A**NYAQ**K**FQGR**L**IT**E**DES 60
13124-4171_16525_7 ASVKVSCKASGGTFRTYA I**S****G**RQAPGGGLEWMGGI**M**STFGS**A**NYAQ**R**FQGRVIT**E**DES 60
13124-6490_17643_7 ASV**N**VSCKASG**D**TFRTYA I**N**WVR**R**APGGGLEWMGGI**M**STFG**P**P**S**YA**R**FQGRVIT**A**DES 60

13124-8992_15884_7 ASVKVSCKASGGT**LT**TYA INWVRQAPGGGLEWMGGI**F**STFGA**A**NYAQ**K**FQGRVIT**A**D**D**S 60
13124-3212_15270_7 ASVKVSCKASGGTFR**TYA** ISWVRQAPGGGLEWMGGI**M**STFGS**A**NYAQR**F**QGRVIT**E**DES 60
13124-3308_14663_7 ASVKVSCKASGGTFR**TYA** ISWVRQAPGGGLEW**T**GGI**M**STFGS**A**NYAQR**F**QGRVIT**E**DES 60
13124-0627_16815_7 ASVKVSC**K**T**S**GGT**VNS**FGI SWVRQAPGGGLEWMGGI**M**STFGS**A**NYAQR**F**QGRVIT**E**DES 60
13124-0069_17021_7 ASVKVSCKASGGT**LPT**YA **VN**WVRQAPGGGLEWMGGI**F**STFG**A**NYAQ**K**FQGR**L**IT**E**D**S** 60
13124-5431_14383_7 ASVKVSCKASGGTFR**TYA** ISWVRQAPGGGLEWMGGI**M**STFGS**A**NYAQR**F**QGRVIT**E**DES 60
13124-2788_17401_7 ASVKVSCKASGGTFR**TYA** ISW**M**RQAPGG**F**EWMGGI**M**STFGS**A**NYAQR**F**QGRVIT**E**DES 60
13124-13091_7899_7 ASVKVSCKASGGTFR**TYA** ISWVRQAPGGGLEWMGGI**M**STFGS**A**NYAQR**F**QGRVIT**E**DES 60
13124-7844_12713_7 ASVKVSCKASGGTFR**TYA** ISWVRQA**S**GGGLEWMGGI**M**STFGS**A**NYAQR**F**QGRVIT**E**DES 60
13124-9626_17094_7 ASVKVSCKASGGTFR**TYA** ISWVRQAPGGGLEWMGGI**M**STFGS**A**NYAQR**F**QGRVIT**E**DES 60
13124-4257_18254_7 **GP**VKVSCKASGGT**LT**TYA INWVRQAPGGGLEWMGGI**F**ST**L**G**A**NYAQ**K**FQGRVIT**A**D**D**S 60
13124-2825_14799_7 ASVKVSCKASGGTFR**TYA** ISWVRQAPGGGLEWMGGI**M**STFGS**A**NYAQR**F**QGRVIT**E**DES 60
13124-9341_15546_7 ASVKVSCKASGGTFR**TYA** ISWVRQAPGGGLEWMGGI**M**STFGS**A**NYAQR**F**QGRVIT**E**DES 60
13124_5533_6283_7 ASVKVSCKASGGT**LT**TYA INWVRQAPGGGLEWMGGI**F**STFG**A**NYAQ**K**FQGRVIT**A**D**D**S 60
13124-13282_9736_7 ASVKVSCKASGGTFR**TYA** ISWVRQAPGGGLEWMGGI**M**STFGS**A**NYAQR**F**QGRVIT**E**DES 60
13124-2363_16799_7 ASVKVSCKASGGTFR**TYA** ISWVRQAPGGGLEWMGGI**M**STFGS**A**NYAQR**F**QGRVIT**E**DES 60
13124-6005_15313_7 ASVKVSCKASGGTFR**TYA** ISWVRQAPGGGLEWMGGI**M**STFGS**A**NYAQR**F**QGRVIT**E**DES 60
13124_9318_3741_7 ASVKVSCKASG**D**TFR**TYA** INWVRQAPGGGLEWMGGI**M**STFG**P**P**S**YAQR**F**QGRVIT**A**D**S** 60
13124-6621_21899_7 ASVKVSCKASGGTFR**TYA** ISWVRQAPGGGLEWMGGI**M**STFGS**A**NYAQR**F**QGRVIT**E**DES 60
13124-5600_22783_7 ASVKVSCKASGGT**LT**TYA INWVRQAPGGGLEWMGGI**F**STFG**A**NYAQ**K**FQ**D**RVIT**A**D**D**S 60
13124-2369_18623_7 ASVKVSCKASGGTFR**TYA** ISWVRQAPGGGLEWMGGI**M**STFGS**A**NYAQR**F**QGRVIT**E**DES 60
13124-11115_8100_7 ASVKVSCKASGGTFR**TYA** ISWVRQAPGGGLEWMGGI**M**STFGS**A**NYAQR**F**QGRVIT**E**DES 60
13124-5412_14379_7 ASVKVSCKASGGTFR**TYA** ISWVRQAPGGGLEWMGGI**M**STFGS**A**NYAQR**F**QGRVIT**E**DES 60
13124-3393_15271_7 ASVKVSCKASGGT**LPT**YA **VN**WVRQAPGGGLEWMGGI**F**STFG**A**NYAQ**K**FQGR**L**IT**E**D**S** 60
13124-5261_22336_7 ASVKVSCKASGGTFR**TYA** ISWVRQAPGGGLEWMGGI**M**STFGS**A**NYAQR**F**QGRVIT**E**DES 60
13124-6633_21883_7 ASVKVSCKASGGTFR**TYA** ISWVRQAPGGGLEWMGGI**M**STFGS**A**NYAQR**F**QGRVIT**E**DES 60
13124-3864_23299_7 ASVKVSCKASGG**I****F**S**R**S**A** ISWVRQAPGGGLEWMGGI**V**P**I****F**G**T**T**D**YA**Q**K**F**QGRVIT**E**DES 60
13124-15325_2660_7 ASVKVSCKASGGTFR**TYA** ISWVRQAPGGGLEWMGGI**M**STFGS**A**NYAQR**F**QGRVIT**E**DES 60
13124-5953_20855_7 ASVKVSCKASGGTFR**TYA** ISWVRQAPGGGLEWMGGI**M**STFGS**A**NYAQR**F**QGRVIT**E**DES 60
13124-1994_10960_7 ASVKVSCKASGGT**LPT**YA **VN**WVRQAPGGGLEWMGGI**F**STFG**A**NYAQ**K**FQGR**L**IT**E**D**S** 60
13124-14093_8682_7 ASVKVSCKASGGTFR**TYA** ISWVRQAPGGGLEWMGGI**M**STFGS**A**NYAQR**F**QGRVIT**E**DES 60
13124-6875_19742_7 AS**L**KVSCKASGGT**LT**TYA INWVRQAPGGGLEWMGGI**F**STFG**A**NYAQ**K**FQGRVIT**A**D**D**S 60
13124-0152_20100_7 ASVKVSCKASGGTFR**TYA** ISWVRQAPGGGLEWMGGI**M**STFGS**A**NYAQR**F**QGRVIT**E**DES 60
13124_7427_9819_7 ASVKVSCKASG**D**TFR**TYA** INWVRQAPGGGLEWMGGI**M**STFG**P**P**S**YAQR**F**QGRVIT**A**D**S** 60
13124-1170_11174_7 ASVKVSCKASGGTFR**TYA** ISWVRQAPGGGLEWMGGI**M**STFGS**A**NYAQR**F**QGRVIT**E**DES 60
13124-0112_10007_7 - SVKVSCKASGGT**LT**TYA INWVRQAPGGGLEWMGGI**F**STFG**A**NYAQ**K**FQGRVIT**A**D**D**S 59
13124-0644_22215_7 ASVKVSCKASGGT**LPT**YA **VN**WVRQAPGGGLEWMGGI**F**STFGS**A**NYAQ**K**FQGR**L**IT**E**D**S** 60
13124-10680_5800_7 ASVKVSCKASGGT**LPT**YA **VN**WVRQAPGGGLEWMGGI**F**STFGS**A**NYAQ**K**FQGR**L**IT**E**D**S** 60
13124-1335_12762_7 ASVKVSCKASGGTFR**TYA** ISWVRQAPGGGLEWMGGI**M**STFGS**A**NYAQR**F**QGRVIT**E**DES 60
13124-6480_14906_7 ASVKVSCKASGGTFR**TYA** ISWVRQAPGGGLEWMGGI**M**STFGS**A**NYAQR**F**QGRVIT**E**DES 60
13124-9619_15184_7 ASVKVSCKASGGT**LPT**YA **VN**WVRQAPGGGLEWMGGI**F**STFGS**A**NYAQ**K**FQGR**L**IT**E**D**S** 60
13124-8510_23327_7 ASVKVSCKASGGTFR**TYA** ISWVRQAPGGGLEWMGGI**M**STFGS**A**NYAQR**F**QGRVIT**E**DES 60
13124-7637_10676_7 ASVKVSCKASGGTFR**TYA** ISWVRQAPGGGLEWMGGI**M**STFGS**A**NYAQR**F**QGRVIT**E**DES 60
13124-9005_19868_7 ASVKVSCKASGGTFR**TYA** ISWVRQAPGGGLEWMGGI**M**STFGS**A**NYAQR**F**QGRVIT**E**DES 60
13124-6121_19672_7 ASVKVSCKASGGTFR**TYA** ISWVRQAPGGGLEWMGGI**M**STFGS**A**NYAQR**F**QGRVIT**E**DES 60
13124-3435_11203_7 ASVKVSCKASGGTFR**TYA** ISWVRQAPGGGLEWMGGI**M**STFGS**A**NYAQR**F**QGRVIT**E**DES 60
13124_6582_9947_7 ASVKVSCKASGGTFR**TYA** ISWVRQAPGGGLEWMGGI**M**STFGS**A**NYAQR**F**QGRVIT**E**DES 60
13124-6431_22711_7 ASVKVSCKASGGT**LPT**YA **VN**WVRQAPGGGLEWMGGI**F**STFGS**A**NYAQ**K**FQGR**L**IT**E**D**S** 60
13124-1655_14573_7 ASVKVSCKASGGTFR**TYA** ISWVRQAPGGGLEWMGGI**M**STFGS**A**NYAQR**F**QGRVIT**E**DES 60
13124-9956_15283_7 ASVKVSCKASGGTFR**TYA** ISW**G**RQAPGGGLEWMGGI**M**STFGS**A**NYAQR**F**QGRVIT**E**DES 60
13124_6539_7943_7 ASVKVSCKASGGT**LPT**YA **VN**WVRQAPGGGLEWMGGI**F**STFGS**A**NYAQ**K**FQGR**L**IT**E**D**S** 60
13124-5113_23035_7 ASVKVSCKASGGT**LPT**YA **VN**WVRQAPGGGLEWMGGI**F**STFGS**A**NYAQ**K**FQGR**L**IT**E**D**S** 60
13124-2646_10466_7 ASVKVSCKASGGT**LPT**YA **VN**WVRQAPGGGLEWMGGI**F**STFGS**A**NYAQ**K**FQGR**L**IT**E**D**S** 60
13124-2009_10951_7 ASVKVSCKASGGT**LPT**YA **VN**WVRQAPGGGLEWMGGI**F**STFGS**A**NYAQ**K**FQGR**L**IT**E**D**S** 60
13124-9577_12166_7 ASVKVSCKASGGTFR**TYA** INWVRQAPGGGLEW**K**GGI**M**STFG**A**T**T**YA**Q**S**F**QGRVIT**A**D**S** 60
13124_9099_7882_7 ASVKVSCKASGGT**LPT**YA **VN**WVRQAPGGGLEWMGGI**F**STFGS**A**NYAQ**K**FQGR**L**IT**E**D**S** 60
13124-13289_8683_7 ASVKVSCKASGGTFR**TYA** ISWVRQAPGGGLEWMGGI**M**STFGS**A**NYAQR**F**QGRVIT**E**DES 60
13124-3751_15933_7 ASVKVSCKASGGT**LPT**YA **VN**WVRQAPGGGLEWMGGI**F**STFGS**A**NYAQ**K**FQGR**L**IT**E**D**S** 60
13124-0093_19171_7 ASVKVSCKASGGTFR**TYA** ISWVRQAPGGGLEWMGGI**M**STFGS**A**NYAQR**F**QGRVIT**E**DES 60
13124-1133_12137_7 ASVKVSCKASGGTFR**TYA** ISWVRQAPGGGLEWMGGI**M**STFGS**A**NYAQR**F**QGRVIT**E**DES 60
13124-6262_20261_7 ASVKVSCKASGGTFR**TYA** ISWVRQAPGGGLEWMGGI**M**STFGS**A**NYAQR**F**QGRVIT**E**DES 60
13124-2302_16661_7 - SVKVSCKASGGTFR**TYA** ISWVRQAPGGGLEWMGGI**M**STFGS**A**NYAQR**F**QGRVIT**E**DES 59
13124_5920_9696_7 ASVKVSCKASGGTFR**TYA** ISWVRQAPGGGLEWMGGI**M**STFGS**A**NYAQR**F**QGRVIT**E**DES 60
13124_3239_9156_7 ASVKVSCKASGGTFR**TYA** ISWVRQAPGGGLEWMGGI**M**ST**L**G**S**ANYAQR**F**QGRVIT**E**DES 60
13124-6793_11592_7 ASVKVSCKASGGTFR**TYA** ISW**A**RQAPGGGLEWMGGI**M**STFGS**A**NYAQR**F**QGRVIT**E**DES 60
13124-7842_13580_7 ASVKVSCKASGGTFR**TYA** ISWVRQAPGGGLEWMGGI**M**STFGS**A**NYAQR**F**QGRVIT**E**DES 60
13124_4115_7313_7 ASVKVSCKASGGTFR**TYA** ISWVRQAPGGGLEWMGGI**M**STFGS**A**NYAQR**F**QGRVIT**E**DES 60
13124-2764_15933_7 ASVKVSCKASGGTFR**TYA** ISWVRQAPGGGLEWMGGI**M**STFGS**A**NYAQR**F**QGRVIT**E**DES 60
13124-4814_16906_7 **G**SVKVSCKASGGTFR**TYA** ISWVRQAPGGGLEWMGGI**M**STFGS**A**NYAQR**F**QGRVIT**E**DES 60
13124-12894_8455_7 ASVKVSCKASG**D**T**F****S**N**YA** INWVRQAPGGGLEWMGGI**F**STFG**A**NYAQ**K**FQGRVIT**A**D**D**S 60
13124-4021_10214_7 ASVKVSCKASG**D**TFR**TYA** INWVRQAPGGGLEWMGGI**M**STFG**K**T**S**YAQR**F**QGRVIT**A**D**S** 60
13124-14652_6376_7 ASVKVSCKASGGTFR**TYA** ISWVRQAPGGGLEWMGGI**M**STFGS**A**NYAQR**F**QGRVIT**E**DES 60
13124-1934_15415_7 ASVKVSCKASGGT**LT**TYA INWVRQAPGGGLEWMGGI**F**STFG**A**NYAQ**K**FQGRVIT**A**D**D**S 60
13124-4075_21379_7 ASVKVSCKASGGTFR**TYA** ISWVRQAPGG**P**EWMMGGI**M**STFGS**A**NYAQR**F**QGRVIT**E**DES 60
13124-1819_23558_7 ASVKVSCKASGGTFR**TYA** ISWVRQAPGGGLEWMGGI**M**STFGS**A**NYAQR**F**QGRVIT**E**DES 60
13124-1674_19239_7 - - VKVSCKASGGTFR**TYA** ISWVRQAPGGGLEWMGGI**M**STFGS**A**NYAQR**F**QGRVIT**E**DES 58

13124-5141_14947_7 ASVKVSCKASGGTFRITYA ISWVRQAPGQGLEWMGGIMSTFGSANYAQRFFQGRVTITEDES 60
13124-8320_22493_7 ASVKVSCKASGGTFRITYA ISWVRQAPGQGLEWMGGIMSTFGSANYAQRFFQGRVTITEDES 60
13124-9273_20388_7 ASVKVSCKASGGTFRITYA ISWVRQAPGQGLEWMGGIMSTFGSANYAQRFFQGRVTITEDES 60
13124-11434_5872_7 - - -VSKASGGTFRITYA ISWVRQAPGQGLEWMGGIMSTFGSANYAQRFFQGRVTITEDES 56
13124-6982_17104_7 ASVKVSCKASGGTLPITYA VNWVRQAPGQGLEWMGGIMSTFGSANYAQRFFQGRVTITEDES 60
13124-11455_8079_7 ASVKVSCKASGGTLPITYA VNWVRQAPGQGLEWMGGIMSTFGSANYAQRFFQGRVTITEDES 60
13124-2646_15030_7 ASVKVSCKASGGTFRITYA ISWVRQAPGQGLEWMGGIMSTFGSANYAQRFFQGRVTITEDES 60
13124-8583_19748_7 ASVKVSCKASGGTFRITYA ISWVRQAPGQGLEWMGGIMSTFGSANYAQRFFQGRVTITEDES 60
13124-5500_4716_7 ASVKVSCKASGGTFRITYA ISWVRQAPGQGLEWMGGIMSTFGSANYAQRFFQGRVTITEDES 60
13124-10551_5365_7 ASVKVSCKASGGTLPITYA VNWVRQAPGQGLEWMGGIMSTFGSANYAQRFFQGRVTITEDES 60
13124-5687_11081_7 ASVKVSCKASGGTRTTYGINWVRQAPGQGLEWMGGIMSTFGSANYAQRFFQGRVTITEDES 60
13124-9986_6754_7 ASVKVSCKASGGTLPITYA VNWVRQAPGQGLEWMGGIMSTFGSANYAQRFFQGRVTITEDES 60
13124-5131_14932_7 ASVKVSCKASGGTFRITYA ISWVRQAPGQGLEWMGGIMSTFGSANYAQRFFQGRVTITEDES 60
13124-4630_13426_7 ASVKVSCKASGGTFRITYA ISWVRQAPGQGLEWMGGIMSTFGSANYAQRFFQGRVTITEDES 60
13124-0784_12259_7 ASVKVSCKASGGTLTTYAINWVRQAPGQGLEWMGGIMSTFGSANYAQRFFQGRVTITEDES 60
13124-13894_9673_7 ASVKVSCKASGGTLPITYA VNWVRQAPGQGLEWMGGIMSTFGSANYAQRFFQGRVTITEDES 60
13124-3199_9372_7 ASVKVSCKASGGTFRITYA ISWVRQAPGQGLEWMGGIMSTFGSANYAQRFFQGRVTITEDES 60
13124-5824_17565_7 ASVKVSCKASGGTSFSGYPISWVRQAPGQGLEWMGGIMSTFGSANYAQRFFQGRVTITEDES 60
13124-11447_8278_7 ASVKVSCKASGGTFRITYA ISWVRQAPGQGLEWMGGIMSTFGSANYAQRFFQGRVTITEDES 60
13124-8718_8350_7 ASVKVSCKASGGTFRITYA ISWVRQAPGQGLEWMGGIMSTFGSANYAQRFFQGRVTITEDES 60
13124-1669_14663_7 ASVKVSCKASGGTFRITYA ISWVRQAPGQGLEWMGGIMSTFGSANYAQRFFQGRVTITEDES 60
13124-11149_8008_7 ASVKVSCKASGGTFRITYA ISWVRQAPGQGLEWMGGIMSTFGSANYAQRFFQGRVTITEDES 60
13124-2846_11434_7 ASVKVSCKASAGTFSNYAIYWVRQAPGQGLEWMGGIMSTFGSANYAQRFFQGRVTITEDES 60
13124-2687_15585_7 ASVKVSCKASGGTFSNYAIYWVRQAPGQGLEWMGGIMSTFGSANYAQRFFQGRVTITEDES 60
13124-5358_9258_7 ASVKVSCKASGGTFRITYA ISWVRQAPGQGLEWMGGIMSTFGSANYAQRFFQGRVTITEDES 60
13124-2107_10523_7 ASVKVSCKASGGTFRITYA ISWVRQAPGQGLEWMGGIMSTFGSANYAQRFFQGRVTITEDES 60
13124-2427_12231_7 ASVKVSCKASGGTLTTYAINWVRQAPGQGLEWMGGIMSTFGSANYAQRFFQGRVTITEDES 60
13124-9497_21934_7 ASVKVSCKASGGDTFRITYAINWVRQAPGQGLEWMGGIMSTFGSANYAQRFFQGRVTITEDES 60
13124-5247_11941_7 ASVKVSCKASGGTFRITYA ISWVRQAPGQGLEWMGGIMSTFGSANYAQRFFQGRVTITEDES 60
13124-7283_4084_7 ASVKVSCKASGGTFRITYA ISWVRQAPGQGLEWMGGIMSTFGSANYAQRFFQGRVTITEDES 60
13124-6630_11242_7 ASVKVSCKSSGGSFSDYVITWVRQAPGQGLEWMGGIMSTFGSANYAQRFFQGRVTITEDES 60
13124-0220_19398_7 ASVKVSCKASGGTFRITYA ISWVRQAPGQGLEWMGGIMSTFGSANYAQRFFQGRVTITEDES 60
13124-6751_12818_7 ASVKVSCKASGGTFRITYA ISWVRQAPGQGLEWMGGIMSTFGSANYAQRFFQGRVTITEDES 60
13124-2649_11192_7 ASVKVSCKASGGTFRITYA ISWVRQAPGQGLEWMGGIMSTFGSANYAQRFFQGRVTITEDES 60
13124-9530_21220_7 ASVKVSCKASGGTLPITYA VNWVRQAPGQGLEWMGGIMSTFGSANYAQRFFQGRVTITEDES 60
13124-0172_13235_7 ASVKVSCKASGGTLTTYAINWVRQAPGQGLEWMGGIMSTFGSANYAQRFFQGRVTITEDES 60
13124-2789_9174_7 ASVKVSCKASGGTLTTYAINWVRQAPGQGLEWMGGIMSTFGSANYAQRFFQGRVTITEDES 60
13124-3398_11605_7 ASVKVSCKASGGTLTTYAINWVRQAPGQGLEWMGGIMSTFGSANYAQRFFQGRVTITEDES 60
13124-2079_14429_7 ASVKVSCKASGGTLTTYAINWVRQAPGQGLEWMGGIMSTFGSANYAQRFFQGRVTITEDES 60
13124-3016_11235_7 ASVKVSCKASGGTFRITYA ISWVRQAPGQGLEWMGGIMSTFGSANYAQRFFQGRVTITEDES 60
13124-7945_8135_7 ASVKVSCKASGGTFRITYA ISWVRQAPGQGLEWMGGIMSTFGSANYAQRFFQGRVTITEDES 60
13124-5742_4672_7 ASVKVSCKASGGTFRITYA ISWVRQAPGQGLEWMGGIMSTFGSANYAQRFFQGRVTITEDES 60
13124-4242_12552_7 ASVKVSCKASGGTFRITYA ISWVRQAPGQGLEWMGGIMSTFGSANYAQRFFQGRVTITEDES 60
13124-4022_12442_7 ASVKVSCKASGGTFRITYA ISWVRQAPGQGLEWMGGIMSTFGSANYAQRFFQGRVTITEDES 60
13124-3434_17111_7 ASVKVSCKASGGTFRITYA ISWVRQAPGQGLEWMGGIMSTFGSANYAQRFFQGRVTITEDES 60
13124-5155_16928_7 ASVKVSCKASGGDTFRITYAINWVRQAPGQGLEWMGGIMSTFGSANYAQRFFQGRVTITEDES 60
13124-9502_14439_7 ASVKVSCKASGGYSFTSYAMHWVRQAPGQGLEWMGGIMSTFGSANYAQRFFQGRVTITEDES 60
13124-4887_19093_7 ASVKVSCKASGGTLPITYA VNWVRQAPGQGLEWMGGIMSTFGSANYAQRFFQGRVTITEDES 60
13124-7862_18760_7 ASVKVSCKASGGTFRITYA ISWVRQAPGQGLEWMGGIMSTFGSANYAQRFFQGRVTITEDES 60
13124-9420_11732_7 ASVKVSCKASGGTFRITYA ISWVRQAPGQGLEWMGGIMSTFGSANYAQRFFQGRVTITEDES 60
13124-5327_11154_7 ASVKVSCKASGGTFRITYA ISWVRQAPGQGLEWMGGIMSTFGSANYAQRFFQGRVTITEDES 60
13124-7222_19833_7 ASVKVSCKASGGTFRITYA ISWVRQAPGQGLEWMGGIMSTFGSANYAQRFFQGRVTITEDES 60
13124-6620_22193_7 ASVKVSCKASGGTFRITYA ISWVRQAPGQGLEWMGGIMSTFGSANYAQRFFQGRVTITEDES 60
13124-7778_16183_7 ASVKVSCKASGGTFRITYA ISWVRQAPGQGLEWMGGIMSTFGSANYAQRFFQGRVTITEDES 60
13124-8010_16995_7 ASVKVSCKASGGTLPITYA VNWVRQAPGQGLEWMGGIMSTFGSANYAQRFFQGRVTITEDES 60
13124-10630_5219_7 ASVKVSCKASGGTLPITYA VNWVRQAPGQGLEWMGGIMSTFGSANYAQRFFQGRVTITEDES 60
13124-4923_16041_7 ASVKVSCKASGGTFRITYA ISWVRQAPGQGLEWMGGIMSTFGSANYAQRFFQGRVTITEDES 60
13124-9997_20587_7 ASVKVSCKASGGTFRITYA ISWVRQAPGQGLEWMGGIMSTFGSANYAQRFFQGRVTITEDES 60
13124-7237_18302_7 ASVKVSCKASGGTFRITYA ISWVRQAPGQGLEWMGGIMSTFGSANYAQRFFQGRVTITEDES 60
13124-3515_14854_7 ASVKVSCKASGGTLPITYA VNWVRQAPGQGLEWMGGIMSTFGSANYAQRFFQGRVTITEDES 60
13136-9104_15300_6 ASVKVSCKASGGTFRITYA ISWVRQAPGQGLEWMGGIMSTFGSANYAQRFFQGRVTITEDES 60

H104 TDTAYMELSSLRSEDATALYYCARDYYRGEFSGYDFESWGQGLVTVSS 107
13124-13108_5443_7 TNTAYMELSSLRSEDATAVYYCARDYYRGEFSGYDFESWGQGLVTVSS 108
13124-17064_7911_7 TNTAYMELSSLRSEDATAVYYCARDHYSGEFSGYDFESWGQGLVTVSS 108
13124-17408_2631_7 TNTAYMELSSLRSEDATAVYYCARDYYRGEFSGYDFESWGQGLVTVSS 108
13124-8638_3852_7 TNTAYMELSSLRSEDATAVYYCARDYYRGEFSGYDFESWGQGLVTVSS 108
13124-13096_5429_7 TNTAYMELSSLRSEDATAVYYCARDYYRGEFSGYDFESWGQGLVTVSS 108
13124-11655_2473_7 TNTAYMELSSLRSEDATAVYYCARDYYRGEFSGYDFESWGQGLVTVSS 108
13124-6426_6714_7 TSTAFMVLSLRSSEDTAVYYCARDYYRGEFSGYDFESWGPGTLVTVS - 107
13124-3939_25072_7 TNTAYMELSSLRSEDATAVYYCARDYYRGEFSGYDFESWGQGLVTVSS 108
13124-4626_10993_7 TSTAYMELSSLRSEDATAVYYCARDYYRGEFSGYDFESWGQGLVTVSS 108
13124-11567_8443_7 TNTAYMELSSLRSEDATAVYYCARDYYRGEFSGYDFESWGQGLVTVSS 108
13124-8121_12403_7 TSTAYMELSSLRSEDATAVYYCARDYYRGEFSGYDFESWGQGLVTVSS 108
13124-7044_12701_7 TNTAYMELSSLRSEDATAVYYCARDYYRGEFSGYDFESWGQGLVTVSS 108
13124-8117_15788_7 TNTAYMELSSLRSEDATAVYYCARDYYRGEFSGYDFESWGQGLVTVSS 108

13124-7893_13223_7 TNTAYMELSSLRSEDTAVYYCARDYYRGEFSGYDFESWGQGT L VTVSS 108
13124-3158_15786_7 TNTAYMELSSLRSEDTAVYYCARDYYRGEFSGYDFESWGQGT L VTVSS 108
13124-8815_14788_7 TNTAYMELSSLRSEDTAVYYCARDYYRGEFSGYDFESWGQGT L VTVSS 108
13124-2327_12778_7 TNTAYMELSSLRSEDTAVYYCARDHYRGEFSGYDFESWGQGT L VTVSS 108
13124-8105_15803_7 TNTAYMELSSLRSEDTAVYYCARDYYRGEFSGYDFESWGQGT L VTVSS 108
13124-7443_18179_7 TNTAYMELSSLRSEDTAVYYCARDYYRGEFSGYDFESWGQGT L VTVSS 108
13124-9311_18403_7 TNTAYMELSSLRSEDTAVYYCARDYYGGEFSGYDFESWGQGT L VTVSS 108
13124-6719_23710_7 TSTAFMVLSSLRSEDTAVYYCARDYYRGEFSGYEFDSWGPGL VTVSS 108
13124-5057_16929_7 TNTAYMELSSLRSEDTAVYYCARDYYRGEFSGYDFESWGQGT L VTVSS 108
13124-0447_20106_7 TNTAYMELSSLRSEDTAVYYCARDYYRGEFSGYDFESWGQGT L VTVSS 108
13124-9291_18407_7 TNTAYMELSSLRSEDTAVYYCARDYYGGEFSGYDFESWGQGT L VTVSS 108
13124-6421_16382_7 TNTAYMELSSLRSEDTAVYYCARDYYRGEFSGYDFESWGQGT L VTVSS 108
13124-0445_20088_7 TNTAYMELSSLRSEDTAVYYCARDYYRGEFSGYDFESWGQGT L VTVSS 108
13124-9924_23840_7 TSTAFMVLSSLRSEDTAVYYCARDYYRGEFSGYEFDSWGPGL VTVSS 108
13124-9837_20019_7 TNTAYMELSSLRSEDTAVYYCARDYYRGEFSGYDFESWGQGT L VTVSS 107
13124-6959_21421_7 TNTAYMELSSLRSEDTAVYYCARDYYRGEFSGYDFESWGQGT L VTVSS 108
13124-8236_14734_7 TNTAYMELSSLRSEDTAVYYRARDYYRGEFSGYDFESWGQGT L VTVSS 108
13124-5203_15739_7 TNTAYMELSSLRSEDTAVYYCARDYYRGEFSGYDFESWGQGT L VTVSS 108
13124-7225_16134_7 TNTAYMELSSLRSEDTAVYYCARDYYRGESSGYDFESWGQGT L VTVSS 108
13124-9918_17841_7 TNTAYMELSSLRSEDTAVYYCARDYYRGEFSGYDFESWGQGT L VTVSS 108
13124-9933_23859_7 TSTAFMVLSSLRSEDTAVYYCARDYYRGEFSGYEFDSWGPGL VTVSS 108
13124-8423_17888_7 TNTAYMEVSSLRSEDTAVYYCARDYYRGEFSGYDFESWGQGT L VTVSS 108
13124-9137_20546_7 TNTAYMELSSLRSEDTAVYYCARDHYRGEFSGYDFESWGQGT L VTVSS 108
13124-1218_13822_7 TNTAYMELSSLRSEDTAVYYCARDHYGGEFSGYDFESWGQGT L VTVSS 108
13124-10130_6428_7 TNTAYMELSSLRSEDTAVYYCARDYYRGEFSGYDFESWGQGT L VTVSS 108
13124_9768_5122_7 TNTAYMELSSLRSEDTAVYYCARDYYRGEFSGYDFESWGQGT L VTVSS 108
13124-3967_14662_7 TNTAYMELSSLRSEDTAVYYCARDYYRGEFSGYDFESWGQGT L VTVSS 107
13124-8620_19010_7 TNTAYMELSSLRSEDTAVYYCARDYYRGEFSGYDFESWGQGT L VTVSS 108
13124_9198_5704_7 TSTAYMELSSLRSEDTAVYFCARSHYRGEFSGYDFESWGQGT L VTVSS 108
13124-9035_16848_7 TNTAYMELSSLRSEDTAVYYCARDYYRGEFSGYDFESWGQGT L VTVSS 108
13124-7851_16910_7 TITAYMELSSLRSEDTAVYYCARDYYRGEFSGYDFESWGQGT L VTVSS 108
13124-1678_14520_7 TSTAYMELSSLRSEDTAVYYCARDYYRGEFSGYDFESWGQGT L VTVSS 108
13124-7932_14529_7 TSTAFMVLSSLRSEDTAVYYCARDYYRGEFSGYEFDSWGPGL VTVSS 108
13124-5731_18956_7 TNTAYMELSSLRSEDTAVYYCARDYYRGEFSGYDFESWGQGT L VTVSS 108
13124-6528_22981_7 TNTAYMELSSLRSEDTAVYYCAGDYRGEFSGYDFESWGQGT L VTVSS - 107
13124-0763_10527_7 TNTAYMELSSLRSEDTAVYYCARDYYRGEFSGYDFESWGQGT L VTVSS 108
13124-11498_8306_7 TNTAYMELSSLRSEDTAVYYCARDYYRGEFSGYDFESWGQGT L VTVSS 108
13124-7548_19327_7 TNTAYMELSSLRSEDTAVYYCARDHYRGEFSGYDFESWGQGT L VTV PQ 108
13124_4874_5395_7 TDAYMELSSLRSEDTAVYYCARDYYRGEFSGYDFESWGQGT L VTVSS 108
13124_3863_8170_7 TNTAYMELSSLRSEDTAVYYCARDYYRGEFSGYDFESWGQGT L VTVSS 108
13124_8455_3398_7 TSTAFMVLSSLRPEDTAVYYCARDYYRGEFSGYEFDSWGPGL VTVSS 107
13124-14332_7138_7 TITAYMELSSLRSEDTAVYYCARDYYRGEFSDYAFESRGGQGT L VTVSS 108
13124_5940_8378_7 TNTAYMELSSLRSEDTAVYYCAGDHYRGEFSGYDFESWGQGT L VTVSS 108
13124-3596_10667_7 TNTDYLEVSSLRSEDTAVYYCTRDRYRGEFSGYDFESWGQGT L VTVSS 108
13124-9089_22037_7 TSTAFMVLSSLRSEDTAVYYCARDYYRGEFSGYEFDSWGPGL VTVSS 108
13124_9831_5195_7 TNTAYLELSSLRSEDTAVYYCAGDHYRGEFSGYDFESWGQGT L VTVSS 108
13124_8481_5588_7 TNTAYMELSSLRSEDTAVYYCARDYYRGEFSGYDFESWGQGT L VTVSS 108
13124-13321_7194_7 TNTAYMELSSLRSEDTAVYYCARDYYRGEFSGYDFESWGQGT L VTVSS 108
13124_8284_4310_7 TITAYMELSSLRSEDTAVYYCARDYYRGEFSDYAFESWGQGT L VTVSS 108
13124_2879_7680_7 TNTAYMELSSLRSEDTAVYYCARDYYRGEFSGYDFESWGQGT L VTVSS 108
13124_5918_7566_7 TNTAYMELSSLRSEDTAVYYCARDYYRGEFSGYDFESWGQGT L VTVSS 108
13124-11929_6964_7 TNTAYMELSSLRSEDTAVYYCARDYYRGEFSGYDFESWGQGT L VTVSS 108
13124-6794_21865_7 TNTAYMELSSLRSEDTAVYYCARDYYRGEFSGYDFESWGQGT L VTVSS 108
13124_7250_8668_7 TNTAYMELSSLRSEDTAVYYCARDYYRGEFSGYDFESWGQGT L VTVSS 108
13124-5023_22438_7 TNTAYMELSSLRSEDTAVYYCARDYYRGEFSGYDFESWGQGT L VTVSS 108
13124-3815_10934_7 TNTAYMELSSLRSEDTAVYYCARDYYRGEFSGYDFESWGQGT L VTVSS 108
13124-7991_18770_7 TNTAYMELSSLRSEDTAVYYCARDYYRGEFSGYDFESWGQGT L VTVSS 108
13124-3867_22831_7 TSTAYMELSSLRSEDTAVYYCARDYYRGEFSDYDFESWGQGT L VTVSS 108
13124-9677_18815_7 TNTAYMELSSLRSEDTAVYYCARDNYRGEFSGYDFESWGQGT L VTVSS 108
13124-11897_8962_7 TITAYMELSSLRSEDTAVYYCARDYYRGEFSDYAFESRGGQGT L VTVSS 108
13124-4170_11198_7 TNTAYMELSSLRSEDTAVYYCARDYYRGEFSGYDFESWGQGT L VTVSS 108
13124-7859_11814_7 TNTAYLELSSLRSEDTAVYYCAGDHYRGEFSGYDFESWGQGT L VTVSS 108
13124-2848_20542_7 TSTAFMVLSSLRSEDTAVYYCARDYYRGEFSGYEFDSWGPGL VTVSS 108
13124-0540_24508_7 TSTAFMVLSSLRSEDTAVYYCARDYYRGEFSGYEFDSWGPGL VTVSS 108
13124-4107_12327_7 TNTAYMELSSLRSEDTAVYYCARDYYRGEFSGYDFESWGQGT L VTVSS 108
13124-9359_11629_7 TNTAYMELSSLRSEDTAVYYCARDYYRGEFSGYDFESWGQGT L VTVSS 108
13124-4870_23583_7 TNTAYMELSSLRSEDTAVYYCARDYYRGEFSGYDFESWGQGT L VTVSS 108
13124-4078_18346_7 TNTAYMELSSLRSEDTAVYYCARDYYRGEFSGYDFESWGQGT L VTVSS 108
13124_9614_9960_7 TSTAYMELSSLRSEDTAVYYCARDYYRGEFSGYDFESWGQGT L VTVSS 108
13124-2552_10161_7 TNTAYMELSSLRSEDTAVYYCARDYYRGEFSGYDFESWGQGT L VTVSS 108
13124-11041_6747_7 TNTAYMELSSLRSEDTAVYYCARDYYRGEFSGYDFESWGQGT L VTVSS 108
13124-8185_18147_7 TNTAYMELSSLRSEDTAVYYCARDYYRGEFSGYDFESWGQGT L VTVSS 108
13124-8027_13180_7 TGTAYMELSSNLRSEDTAVYYCARDNYRGEFSGYDFESRGGQGT L VTVSS 108
13124_4111_9790_7 TNTAYMELSSLRSEDTAVYYCARDYYRGEFSGYDFESWGQGT L VTVSS 108
13124_4128_9784_7 TNTAYMELSSLRSEDTAVYYCARDYYRGEFSGYDFESWGQGT L VTVSS 108
13124-2862_22915_7 TNTAYMELSSLRSEDTAVYYCARDYYRGEFSGYDFESWGQGT L VTVSS 108

| | | |
|--------------------|--|-----|
| 13124-14791_9711_7 | TNTAYMELSSLRSEDTAVYYCARDYYRGEFSGYDFESWGQGT L VTVSS | 108 |
| 13124-5213_15196_7 | TNTAYMELSSLRSDVDTAVYYCARDYYRGEFSGYDFESWGQGT L VTVSS | 108 |
| 13124-2079_15900_7 | TNTAYMELSSLRSEDTAVYYCARDYYRGEFSGYDFESWGQGT L VTVSS | 108 |
| 13124-13540_4548_7 | TSTAFMVLSSLRSEDTAVYYCARDYYRGEFSGYEFDSWGPGLTVTVSS | 108 |
| 13124-2382_16449_7 | TNTAYMELSSLRSEDTAVYYCARDYYRGEFSGYDFESWGQGT L VTVSS | 108 |
| 13124-4993_22878_7 | TNTAYMELSSLRSEDTAVYYCARDYYRGEFSGYDFESWGQGT L VTVSS | 107 |
| 13124-4437_23388_7 | TNTAYMELSSLRSEDTAVYYCARDYYRGEFSGYDFESWGQGT L VTVSS | 108 |
| 13124-8008_13185_7 | TGTAYMELSSNLRSEDTAVYYCARDNYRGEFSGYDFESRQGGT L VTVSS | 108 |
| 13124-7376_16321_7 | TNTAYMELSSLRSEDTAVYYCARDYYRGEFSGYDFESWGQGT L VTVSS | 108 |
| 13124-3709_19439_7 | TITAYMELSSLRSEDTAVYYCARDYYRGEFSGDYAFESLGGGT L VTVSS | 108 |
| 13124-4765_15700_7 | TNTAYMELSSLRSEDTAVYYCARDYYRGEFSGYDFESWGQGT L VTVSS | 108 |
| 13124-9639_24880_7 | TNTAYMELSSLRSEDTAVYYCARDYYRGEFSGYDFESWGQGT L VTVSS | 108 |
| 13124-8292_21235_7 | TNTAYMELSSLRSEDTAVYYCARDYYRGEFSGYDFESWGQGT L VTVSS | 108 |
| 13124-9713_21352_7 | TNTAYMELSSLRSEDTAVYYCARDYYRGEFSGYDFESWGQGT L VTVSS | 108 |
| 13124-9427_20019_7 | TNTAYMELSSLRSEDTAVYYCARDYYRGEFSGYDFESWGQGT L VTVSS | 108 |
| 13124-5040_16938_7 | TNTAYMELSSLRSEDTAVYYCARDYYRGEFSGYDFESWGQGT L VTVSS | 108 |
| 13124-8347_21942_7 | TSTAFMVLSSLRSEDTAVYYCARDYYRGEFSGYEFDSWGPGLTV - - | 105 |
| 13124-5777_22947_7 | TSTAFVVLSSLRSEDTAVYYCARDYYRGEFSGYEFDSWGPGLTVTVSS | 108 |
| 13124_4397_9065_7 | TSTAFMVLSSLRSEDTAVYYCARDYYRGEFSGYEFDSWGPGLTVTVSS | 108 |
| 13124-3931_10267_7 | TNTAYMELSSLRSEDTAVYYCARDYYRGEFSGYDFESWGQGT L VTVSS | 108 |
| 13124-5777_18414_7 | TSTAFMVLSSLRSEDTAVYYCARDYYRGEFSGYEFDSWGPGLTVTVSS | 108 |
| 13124-2961_10599_7 | TNTAYMELSSLRSEDTAVYYCARDYYRGEFSGYDFESWGQGT L VTVSS | 108 |
| 13124-4833_13428_7 | TSTAYMELSSLRSEDTAVYYCARDYYRGEFSGYDFESWGQGT L VTVSS | 108 |
| 13124-7290_10049_7 | TSTAYMELSSLRSEDTAVYYCARDYYRGEFSGYDFESWGQGT L VTVSS | 108 |
| 13124-10984_7775_7 | TNTAYMELSSLRSEDTAVYYCARDYYRGEFSGYDFESWGQGT L VTVSS | 108 |
| 13124-5676_10490_7 | TSTAYMELSSLRSEDTAVYYCARDYYRGEFSGYDFESWGQGT L VTVSS | 108 |
| 13124-4431_19862_7 | TNTAYMELSSLRSEDTAVYYCARDYYRGEFSGYDFESWGQGT L VTVSS | 108 |
| 13124-8438_21841_7 | TSTAFMVLSSLRSEDTAVYYCARDYYRGEFSGYEFDSWGPGLTVTVSS | 108 |
| 13124_4798_9013_7 | TNTAYMELSSLRSEDTAVYYCARDYYRGEFSGYDFESWGQGT L VTVSS | 107 |
| 13124-13204_9680_7 | TNTAYMELSSLRSEDTAVYYCARDYYRGEFSGYDFESWGQGT L VTVSS | 107 |
| 13124-12757_5026_7 | TSTAFMVLSSLRSEDTAVYYCARDYYRGEFSGYEFDSWGPGLTVTVSS | 108 |
| 13124-13220_9689_7 | TNTAYMELSSLRSEDTAVYYCARDYYRGEFSGYDFESWGQGT L VTVSS | 107 |
| 13124-7770_14522_7 | TNTAYMELSSLRSEDTAVYYCARDYYRGEFSGYDFESWGQGT L VTVSS | 108 |
| 13124-7560_16450_7 | TNTAYMELSSLRSEDTAVYYCARDYYRGEFSGYDFESWGQGT L VTVSS | 108 |
| 13124-4447_14799_7 | TITAYMELSSLRSEDTAVYYCARDYYRGEFSGDYDFESWGQGT L VTVSS | 108 |
| 13124_7855_8304_7 | TNTAYMEVSSLRSEDTAVYYCARDYYGGEFSGYDFESWGQGT L VTVSS | 108 |
| 13124-8448_21825_7 | TSTAFMVLSSLRSEDTAVYYCARDYYRGEFSGYEFDSWGPGLTVTVSS | 108 |
| 13124-9376_12733_7 | TNTAYMELSSLRSEDTAVYYCARDYYRGEFSGYDFESWGQD L VTVSS | 108 |
| 13124-0561_12859_7 | TSTAFMVLSSLRSEDTAVYYCARDYYRGEFSGYEFDSWGPGLTVTVSS | 108 |
| 13124-18447_9188_7 | TNTAYMELSSLRSEDTAVYYCARDYYRGEFSGYDFESWGQGT L VTVSS | 108 |
| 13124-3651_15165_7 | TITAYMELSSLRSAADTAVYYCARDYYRGEFSGDYAFESWGQGT L VTVSS | 108 |
| 13124-8913_15798_7 | TSTAFMVLSSLRSEDTAVYYCARDYYRGEFSGYEFDSWGPGLTVTVSS | 108 |
| 13124-4025_16095_7 | TSTAYLELSSLSHEDTAMYYCAGDPYRGEFSGYDFESWGQGT L VTVSS | 108 |
| 13124-5309_16512_7 | TSTAFMVLSSLRSEDTAVYYCARDYYRGEFSGYEFDSWGPGLTVTVSS | 108 |
| 13124-3780_18957_7 | TSTAFMVLSSLRSEDTAVYYCARDYYRGEFSGYEFDSWGPGLTVTVSS | 108 |
| 13124-1006_19809_7 | TNTAYMELSSLRSEDTAVYYCARGYYRGEFSGYDFESWGQGT L VTVSS | 108 |
| 13124-6574_14673_7 | TNTAYMELSSLRSEDTAVYYCARDYYRGEFSGYDFESWGQGT L VTVSS | 108 |
| 13124-0469_13993_7 | TSTAYMELSSLRSEDTAVYYCARDYYRGEFSGYDFESWGQGT L VTVSS | 108 |
| 13124-2633_17804_7 | TSTAFMVLSSLRSEDTAVYYCARDYYRGEFSGYEFDSWGPGLTVTVSS | 108 |
| 13124-5230_13315_7 | TNTAYMELSSLRSEDTAVYYCARDYYRGEFSGYDFESWGQGT L VTVSS | 107 |
| 13124-6595_14658_7 | TNTAYMELSSLRSEDTAVYYCARDYYRGEFSGYDFESWGQGT L VTVSS | 108 |
| 13124-3611_18936_7 | TNTAYMELSSLRSEDTAVYYCARDYYRGEFSGYDFESWGQGT L VTVSS | 108 |
| 13124-8388_23214_7 | TNTAYMELSSLRSEDTAVYYCARDYYRGEFSGYDFESWGQGT L VTVSS | 108 |
| 13124-1740_10157_7 | TNTAYMELSSLRSEDTAVYYCARDYYRGEFSGYDFESWGQGT L VTVSS | 108 |
| 13124-9729_17599_7 | TSTAFMVLSSLRSEDTAVYYCARDYYRGEFSGYEFDSWGPGLTVTVSS | 108 |
| 13124-5134_17304_7 | TITAYMELSSLRSEDTAVYYCARDYYRGEFSGYDFESWSQGT L VTVSS | 108 |
| 13124-0984_22407_7 | TSTPFMVLSSLRSEDTAVYYCARDYYRGEFSGYEFDSWGPGLTVTVSS | 108 |
| 13124-4171_16525_7 | TNTAYMELSSLRSEDTAVYYCARDYYRGEFSGYDFESWGQGT L VTVSS | 108 |
| 13124-6490_17643_7 | TNTAYMEVRS LRSEDTAVYYCARDYSGEFSGYDFESWGEGLTVTVSS | 108 |
| 13124-8992_15884_7 | TITAYMELSSLRSEDTAVYYCARDYYRGEFSGDYAFESWGQGT L VTVSS | 108 |
| 13124-3212_15270_7 | TNTAYMELSSLRSEDTAVYYCARDYYRGEFSGYDFESWGQGT L VTVSS | 108 |
| 13124-3308_14663_7 | TNTAYMELSSLRSEDTAVYYCARDYYRGEFSGYDFESWGQGT L VTVSS | 108 |
| 13124-0627_16815_7 | TNTAYMELSSLRSEDTAVYYCARDYYRGEFSGYDFESWGQGT L VTVSS | 108 |
| 13124-0069_17021_7 | TSTAFMVLSSLRSEDTAVYYCARDYYRGEFSGYEFDSWGPGLTVTVSS | 108 |
| 13124-5431_14383_7 | TNTAYMELSSLRSEDTAVYYCARDYYRGEFSGYDFESWGQGT L VTVSS | 108 |
| 13124-2788_17401_7 | TNTAYMELSSLRSEDTAVYYCARDYYRGEFSGYDFESWGQGT L VTVSS | 108 |
| 13124-13091_7899_7 | TNTAYMELSSLRSEDTAVYYCARDYYRGEFSGYDFESWGQGT L VTVSS | 108 |
| 13124-7844_12713_7 | TNTAYMELSSLRSEDTAVYYCARDYYRGEFSGYDFESWGQGT L VTVSS | 108 |
| 13124-9626_17094_7 | TSTAYMELSSLRSEDTAVYYCARDYYRGEFSGVYDFESWGQGT L VTVSS | 108 |
| 13124-4257_18254_7 | TITAYMG LSSLRSEDTAVYYCARDYYRGEFSGDYAFESWGQGT M VTVSS | 108 |
| 13124-2825_14799_7 | TNTAYMELSSLRSEDTAVYYCARDYYRGEFSGYDFESWGQGT L VTVSS | 108 |
| 13124-9341_15546_7 | TNTAYMELSSLRSEDTAVYYCARDYYRGEFSGYDFESWGQGT L VTVSS | 108 |
| 13124_5533_6283_7 | TITAYMELSSLRSEDTAVYYCARDYYRGEFSGDYAFESLGGGT L VTVSS | 108 |
| 13124-13282_9736_7 | TNTAYMELSSLRSEDTAVYYCARDYYRGEFSGYDFESWGQGT L VTVSS | 108 |
| 13124-2363_16799_7 | TNTAYMELSSLRSEDTAVYYCARDYYRGEFSGYDFESWGQGT L VTVSS | 108 |
| 13124-6005_15313_7 | TNTAYMELSSLRSEDTAVYYCARDYYRGEFSGYDFESWGQGT L VTVSS | 108 |

13124-9318_3741_7 TNTAYMELVSSLRSEDTAVYYCARDYYGGEFSGYDFESWGQGT LVTVSS 108
13124-6621_21899_7 TNTAYMELSSLRSEDTAVYYCARDYYRGEFSGYDFESWGQGT LVTVSS 108
13124-5600_22783_7 TTTAYMELSSLRSEDTAVYYCARDYYRGEFSDYAFESWARREPWSPSPQ 108
13124-2369_18623_7 TNTAYMELSSLRSEDTAVYYCARDYYRGEFSGYDFESWGQGT LVTVSS 108
13124-11115_8100_7 TNTAYMELSSLRSEDTAVYYCARDYYRGEFSGYDFESWGQGT LVTVSS 108
13124-5412_14379_7 TNTAYMELSSLRSEDTAVYYGARDYYRGEFSGYDFESWGQGT LVTVSS 108
13124-3393_15271_7 TSTAFMVLSSLRSEDTAVYYCARDYYRGEFSGYEFDSWGPGL LVTVSS 108
13124-5261_22336_7 TNTAYMELSSLRSEDTAVYYCARDYYRGEFSGYDFESWGQGT LVTVSS 108
13124-6633_21883_7 TNTAYMELSSLRSEDTAVYYCARDYYRGEFSGYDFESWGQGT LVTVSS 108
13124-3864_23299_7 TNTAYMDLSSLRSEDTAVYYCARDYYRGEFSGYDFESWGQGT RVTVSS 108
13124-15325_2660_7 TNTAYMELSSLRSEDTAVYYCARDYYRGEFSGYDFESWGQGT LVTVSS 108
13124-5953_20855_7 TNTAYMELSSLRSEDTAVYYCARDYYRGEFSGYDFESWGQGT LVTVSS 108
13124-1994_10960_7 TSTAFMVLSSLRSEDTAVYYCARDYYRGEFSGYEFDSWGPGL LVTVSS 108
13124-14093_8682_7 TNTAYMELSSLRSEDTAVYYCARGHYRGEFSGYDFESWGQGT LVTVSS 108
13124-6875_19742_7 TTTAYMELSSLRSEDTAVYYCARDYYRGEFSDYAFESWGQGT LVTVSS 108
13124-0152_20100_7 TNTAYMELSSLRSEDTAVYYCASDHYRGEFSGYDFESWGQGT LVTVSS 108
13124-7427_9819_7 TNTAYMELVSSLRSEDTAVYYCARDYYGGEFSGYDFESWGQGT LVTVSS 108
13124-1170_11174_7 TNTAYMELSSLRSEDTAVYYCARDYYRGEFSGYDFESWGQGT LVTVSS 108
13124-0112_10007_7 TTTAYMELSSLRSEDTAVYYCARDYYRGEFSDYAFESWGQGT LVTVSS 107
13124-0644_22215_7 TSTAFMVLSSLRSEDTAVYYCARDYYRGEFSGYEFDSWGPGL LVTVSS 108
13124-10680_5800_7 TSTAFMVLSSLRSEDTAVYYCARDYYRGEFSGYEFDSWGPGL LVTVSS 108
13124-1335_12762_7 TNTAYVELSSLRSEDTAVYYCARDYYRGEFSGYDFESWGQGT LVTVSS 108
13124-6480_14906_7 TNTAYMELSSLRSEDTAVYYCARDYYRGEFSGYDFESWGQGT LVTVSS 108
13124-9619_15184_7 TSTAFMVLSSLRSEDTAVYYCARDYYRGEFSGYEFDSWGPGL LVTVSS 108
13124-8510_23327_7 TNTAYMELSSLRSEDTAVYYCARDYYRGEFSGYDFESWGQGT LVTVSS 108
13124-7637_10676_7 TNTAYMELSSLRSEDTAVYYCARDYYRGEFSGYDFESWGQGT LVTVSS 108
13124-9005_19868_7 TNTAYMELSSLRSEDTAVYYCARDYYGGEFSGYDFESWGQGT LVTVSS 108
13124-6121_19672_7 TNTAYMELSSLRSEDTAVYYCARDYYRGEFSGYDFESWGQGT LVTVSS 108
13124-3435_11203_7 TNTAYMELSSLRSEDTAVYYCARDYYRGEFSGYDFESWGQGT LVTVSS 108
13124-6582_9947_7 TNTAYMELSSLRSEDTAVYYCARDYYRGEFSGYDFESWGQGT LVTVSS 108
13124-6431_22711_7 TSTAFMVLSSLRSEDTAVYYCARDYYRGEFSGYEFDSWGPGL LVTVSS 108
13124-1655_14573_7 TNTAYMELSSLRSEDTAVYYCARDYYRGEFSGYDFESWGQGT LVTVSS 108
13124-9956_15283_7 TNTAYMELGSLRSEDTAVYYCARDYYRGE LSGYDFESWGQGT LVTVSS 108
13124-6539_7943_7 TSTAFMVLSSLRSEDTAVYYCARDYYRGEFSGYEFDSWGPGL LVTVSS 108
13124-5113_23035_7 TSTAFMVLSSLRSEDTAVYYCARDYYRGEFSGYEFDSWGPGL LVTVSS 108
13124-2646_10466_7 TSTAFMVLSSLRSEDTAVYYCARDYYRGEFSGYEFDSWGPGL LVTVSS 108
13124-2009_10951_7 TSTAFMVLSSLRSEDTAVYYCARDYYRGEFSGYEFDSWGPGL LVTVSS 108
13124-9577_12166_7 TNTDYLEVSR L T SEDTA IYYC TRDYRGEFSGYDFESWGQGT LVTVSS 108
13124-9099_7882_7 TSTAFMVLSSLRSEDTAVYYCARDYYRGEFSGYEFDSWGPGL LVTVSS 108
13124-13289_8683_7 TNTAYMELSSLRSEDTAVYYCARDYYRGEFSGYDFESWGQGT LVTVSS 108
13124-3751_15933_7 TSTAFMVLSSLRSEDTAVYYCARDYYRGEFSGYEFDSWGPGL LVTVSS 108
13124-0093_19171_7 TNTAYMELSSLRSEDTAVYYCARDYYRGEFSGYDFESWGQGT LVTVSS 108
13124-1133_12137_7 TNTAYMELSSLRSEDTAVYYCARDYYRGEFSGYDFESWGQGT LVTVSS 108
13124-6262_20261_7 TNTAYMELSSLRSEDTAVYYCARDYYRGEFSGYDFESWGQGT LVTVSS 108
13124-2302_16661_7 TNTAYMELSSLRSEDTAVYYCARDYYRGEFSGYDFESWGQGT LVTVSS 107
13124-5920_9696_7 TNTAYMELSSLRSEDTAVYYCARDYYRGEFSGYDFESWGQGT LVTVSS 108
13124-3239_9156_7 TNTAYMELSSLRSEDTAVYYCARDYYRGEFSGYDFESWGQGT LVTVSS 108
13124-6793_11592_7 TNTAYMELSSLRSEDTAVYYCARDYYRGEFSGYDFESWGQGT LVTVSS 108
13124-7842_13580_7 TNTAYMELSSLRSEDTAVYYCARDYYRGEFSGYDFESWGQGT LVTVSS 108
13124-4115_7313_7 TNTAYMELSSLRSEDTAVYYCARDYYRGEFSGYDFESWGQGT LVTVSS 108
13124-2764_15933_7 TNTAYMELSSLRSEDTAVYYCARDYYRGEFSGYDFESWGQGT LVTVSS 108
13124-4814_16906_7 TNTAYMELSSLRSEDTAVYYCARDYYRGEFSGYDFESWGQGT LVTVSS - 107
13124-12894_8455_7 TTTAYMELSSLRSEDTAVYYCARDYYRGEFSDYAFESWGQGT LVTVSS 108
13124-4021_10214_7 TNTAYMELVSSLRSEDTAVYYCARDYHSGEFSGYDFESWGQGT LVTVSS 108
13124-14652_6376_7 TNTAYMELSSLRSEDTAVYYCARDYYRGEFSGYDFESWGQGT LVTVSS 108
13124-1934_15415_7 TTTAYMELSSLRSEDTAVYYCARDYYRGEFSDYAFESRGGGT LVTVSS 108
13124-4075_21379_7 TNTAYMELSSLRSEGTAVYYCARDYYRGEFSGYDFESWGQGT LVTVSS 108
13124-1819_23558_7 TNTAYMELSSLRSEDTAVYYCARDYYRGEFSGYDFESWGQGT LVTVSS 108
13124-1674_19239_7 TNTAYMELSSLRSEDTAVYYCARDYYRGEFSGYDFESWGQGT LVTVSS 106
13124-5141_14947_7 TNTAYMELSSLRSEDTAVYYCARDYYRGEFSGYDFESWGQGT LVTVSS 108
13124-8320_22493_7 TNTAYMELSSLRSEDTAVYYCARDYYRGEFSGYDFESWGRGT LVTSPQ 108
13124-9273_20388_7 TNTAYMELSSLRSEDTAVYYCARDYYRGEFSGYDFESWGQGT LVTVSS 108
13124-11434_5872_7 TNTAYLELSSLRSEDTAVYYCARDHYGGEFSGYDFESWGQGT LVTVSS 104
13124-6982_17104_7 TSTAFMMLSSLRSEDTAVYYCARDYYRGEFSGYEFDSWGPGL LVTVSS 108
13124-11455_8079_7 TSTAFMVLSSLRSEDTAVYYCARDYYRGEFSGYEFDSWGPGL LVTVSS 108
13124-2646_15030_7 TSTAYMELSSLRSEDTAVYYCARDYYRGEFSGYDFESWGQGT LVTVSS 108
13124-8583_19748_7 TSTAYMELSSLRSEDTAVYYCARDYYRGEFSGYDFESWGQGT LVT - - 105
13124-5500_4716_7 TNTAYMELSSLRSEDTAVYYCARDYYRGEFSGYDFESWGQGT LVTVSS 108
13124-10551_5365_7 TCTAFMVLSSLRSEDTAVYYCARDYYRGEFSGYEFDSWGPGL LVTVSS 108
13124-5687_11081_7 TSTAYMELSSLRSDDTAVYYCVRDYRGEFSGYDFESWGQGT LVTVSS 108
13124-9986_6754_7 TSTAFMVLSSLRSEDTAVYYCARDYYRGEFSGYEFDSWGPGL LVTVSS 108
13124-5131_14932_7 TNTAYMELSSLRSEDTAVYYCARDYYRGEFSGYDFESWGQGT LVTVSS 108
13124-4630_13426_7 TNTAYMELSSLRSEDTAVYYCARDYYRGEFSGYDFESWGQGT LVTVSS 108
13124-0784_12259_7 TTTAYMELSSLRSEDTAVYYCARDYYRGEFSDYAFESRGGGT LVTVSS 108
13124-13894_9673_7 TSTAFMVLSSLRSEDTAVYYCARDYYRGEFSGYEFDSWGPGL LVTVSS 108
13124-3199_9372_7 TNTAYMELSSLRSEDTAVYYCARDYYRGEFSGYDFESWGQGT LVTVSS 108

| | | |
|--------------------|--|-----|
| 13124-5824_17565_7 | T T TAYMELSSLR S ADTAVYYCARDYYRGEF S D Y AFESWGQGT L VT R L L | 108 |
| 13124-11447_8278_7 | TNTAYMELSSLRSEDTAVYYCARDYYRGEFSGYDFESWGQGT L VT V SS | 108 |
| 13124-8718_8350_7 | TNTAYMELSSLRSEDTAVYYCARDYYRGEFSGYDFESWGQGT L VT V SS | 108 |
| 13124-1669_14663_7 | TNTAYMELSSLRSEDTAVYYCARDYYRGEFSGYDFESWGQGT L VT V SS | 108 |
| 13124-11149_8008_7 | TNTAYMELSSLRSEDTAVYYC S RDYYRGEFSGYDFESWGQGT L VT - - | 105 |
| 13124-2846_11434_7 | T S T A F M V LSSLRSEDTAVYYCARDYYRGEFSGY E F D SWG P GT L VT V SS | 108 |
| 13124-2687_15585_7 | T S TAYMELSSLRSEDTAVYYCARDYYRGEFSGYDFESWGQGT L VT V SS | 108 |
| 13124-5358_9258_7 | TNTAYMELSSLRSEDTAVYYCARDYYRGEFSGYDFESWGQGT L VT V SS | 108 |
| 13124-2107_10523_7 | TNTAYMELSSLRSEDTAVYYCARDYYRGEFSGYDFESWGQGT L VT V SS | 108 |
| 13124-2427_12231_7 | T T TAYMELSSLRSEDTAVYYCARDYYRGEF S D Y AF S R D QGT L VT V SS | 108 |
| 13124-9497_21934_7 | TNTAYM E VSSLRSEDTAVYYCARDYY G GEFSGYDFESWGQGT L VT V SS | 108 |
| 13124-5247_11941_7 | TNTAYMELSSLRSEDTAVYYCARDYYRGEFSGYDFESWGQGT L VT V SS | 108 |
| 13124-7283_4084_7 | TNTAYMELSSLRSEDTAVYYC A R D H Y G GEFSGYDFESWGQGT L VT V SS | 108 |
| 13124-6630_11242_7 | TNTAYMELSSLRSEDTAVYYCARDYYRGEFSGYDFESWGQGT L VT V SS | 108 |
| 13124-0220_19398_7 | TNTAYMELSSLRSEDTAVYYCARDYYRGEFSGYDFESWGQGT L VT V SS | 108 |
| 13124-6751_12818_7 | TNTAYMELSSLRSEDTAVYYCARDYYRGEFSGYDFESWGQGT L VT V SS | 108 |
| 13124-2649_11192_7 | TNTAY L ELSSLRSEDTAVYYCARDYYRGEFSGYDFESWGQGT L VT V SS | 108 |
| 13124-9530_21220_7 | T S T A F M V LSSLRSEDTAVYYCARDYYRGEFSGY E F D SWG P GT L VT V SS | 108 |
| 13124-0172_13235_7 | T T TAYMELSSLRSEDTAVYYCARDYYRGEF S D Y AF S L GQGT L VT V SS | 108 |
| 13124-2789_9174_7 | T T TAYMELSSLRSEDTAVYYCARDYYRGEF S D Y AF S WGQGT L VT V SS | 108 |
| 13124-3398_11605_7 | T T TAYMELSSLRSEDTAVYYCARDYYRGEF S D Y AF S S GQGT L VT V SS | 108 |
| 13124-2079_14429_7 | T T TAYMELSSLRSEDTAVYYCARDYYRGEF S D Y AF S WGQGT L VT V SS | 108 |
| 13124-3706_11235_7 | TNTAYMELSSLRSEDTAVYYCARDYYRGEFSGYDFESWGQGT L VT V SS | 108 |
| 13124-7945_8135_7 | TNTAYMELSSLRSEDTAVYYCARDYYRGEFSGYDFESWGQGT L VT V SS | 108 |
| 13124-5742_4672_7 | TNTAYMELSS L V P EDTAVY F C A S D H YRGEFSGYDFESWGQGT L VT V SS | 108 |
| 13124-4242_12552_7 | TNTAYMELSSLRSEDTAVYYCARDYYRGEFSGYDFESWGQGT L VT V SS | 108 |
| 13124-4022_12442_7 | TNTAYMELSSLRSEDTAVYYCARDYYRGEFSGYDFESWGQGT L VT V SS | 108 |
| 13124-3434_17111_7 | TNTAYMELSSLRSEDTAVYYCARDYYRGEFSGYDFESWGQGT L VT V SS | 108 |
| 13124-5155_16928_7 | TNTAYM E VSSLRSEDTAVYYCARDYY S D EFSGYDFESWGQGT L VT V SS | 108 |
| 13124-9502_14439_7 | TNTAYMELSSLRSEDTAVYYCARDYYRGEFSGYDFESWGQGT L VT V SS | 108 |
| 13124-4887_19093_7 | T T TAYMELSSLRSEDTAVYYCARDYYRGEF S D Y AF S G GQGT L VT V SS | 108 |
| 13124-7862_18760_7 | TNTAYMELSSLRSEDTAVYYCARDYYRGEFSGYDFESWGQGT L VT V SS | 108 |
| 13124-9420_11732_7 | TNTAYMELSSLRSEDTAVYYCARDYYRGEFSGYDFESWGQGT L VT V SS | 108 |
| 13124-5327_11154_7 | TNTAYMELSSLRSEDTAVYYCARDYYRGEFSGYDFESWGQGT L VT V SS | 108 |
| 13124-7222_19833_7 | TNTAYMELSSLRSEDTAVYYCARDYYRGEFSGYDFESWGQGT L VT V SS | 108 |
| 13124-6620_22193_7 | TNTAYMELSSLRSEDTAVYYCARDYYRGEFSGYDFESWGQGT L VT V SS | 108 |
| 13124-7778_16183_7 | TNTAYMELSSLRSEDTAVYYCARDYYRGEFSGYDFESWGQGT L VT V SS | 108 |
| 13124-8010_16995_7 | T S T A F M V LSSLRSEDTAVYYCARDYYRGEFSGY E F D SWG P GT L VT V SS | 108 |
| 13124-10630_5219_7 | T S T A F M V LSSLRSEDTAVYYCARDYYRGEFSGY E F D SWG P GT L VT V SS | 108 |
| 13124-4923_16041_7 | TNTAYMELSSLRSEDTAVYYCARDYYRGEFSGYDFESWGQGT L VT V SS | 108 |
| 13124-9997_20587_7 | TNTAYMELSSLRSEDTAVYYCARDYYRGEFSGYDFESWGQGT L VT V SS | 108 |
| 13124-7237_18302_7 | TNT A N L ELSSLRSEDTAV D Y C A R D H D RGEFSGYDFESWGQGT L VT V SS | 108 |
| 13124-3515_14854_7 | T S T A F M V LSSLRSEDTAVYYCARDYYRGEFSGY E F D SWG P GT L VT V SS | 108 |
| 13136-9104_15300_6 | TNTAYMELSSLRSEDTAVYYC A R V H YRGEFSGYDFESWGQGT L VT V SS | 108 |