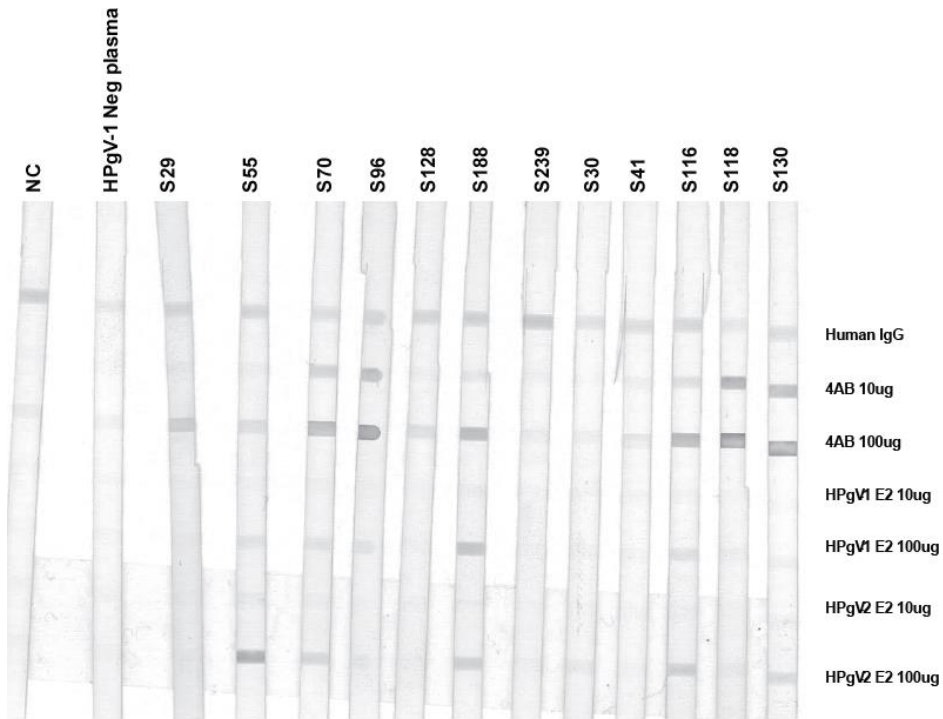


Supplemental Figures:

Supplemental Figure 1: Slot blot of HPgV-2 RNA positive samples. HPgV-2 RNA positive samples were tested for reactivity to NS4AB, HPgV-2 E2, or HPgV-1 E2 by slot blot.

Supplemental Figure 2: A. Alignment of HPgV-2 peptide 16 sequence with corresponding region in HPgV-1 and HCV antigen 5-1-1. B. Alignment of HPgV-2, HPgV-1, and HCV E2.

Supplemental Figure 3: S/CO values for testing HCV and HBV seroconversion panels for anti-E2. The following HCV and HBV seroconversion panels were tested: [panel number (bleed number)]: HCV: 100071 (1, 7), 10043 (1, 10), 913 (1, 4), 914 (1, 9), 919 (1, 7), 921 (1, 11), 922 (1, 6), 6224 (1, 6) 6229 (1, 8), 9044 (1, 6), 9047 (1, 10), 9054 (1, 10), 9058 (1, 5), 10025 (1, 11), 10041 (1, 3), 10165 (1, 9), 9055 (1, 11), 10017 (1, 16), 10002 (1, 7), 10004 (1, 6), 10008 (1, 10), 10011 (1, 13), 10020 (1, 13), 10023 (1, 21), 10029 (1, 16), 1051 (1, 14), 9054 (1, 8), 10016 (1, 12), last bleed only: 6222, 6227, 9041, 6216, 6213, 6225, 6228, 10026, 10062, 10021, 10003, 915, 6226, 10000. HBV: 6272 (1, 26), 26982/14399 (1, 25), 11007 (1, 14) 43527/3453 (1, 26), PHM935A (1, 20), 11009 (1, 23), 1808 (1, 21), 11028 (1, 10), 1002 (1, 6), 6282 (1, 14), 11031 (1, 16), 11012 (1, 6), 9279 (1, 7), 11005 (1, 14), 6271 (5), PHM925 (1, 5), 6284 (1, 19), 6274 (1, 7), 6273 (1, 6), 11017 (1, 14), 11000(1, 9), PHM (928 (1, 7), PHM912 (1, 9), PHM924 (1, 5), PHM908 (1, 8), PHM918 (1, 3), PHM904 (1, 3), PHM933(2, 6), PHM906(1, 5), PHM934 (1,6), 11014 (1(12), 11027 (1, 14), 6281 (1, 12), 6278 (1, 9), 6290 (1, 12), 11008 (1, 18), 11059 (1, 9), 11013 (1, 35), 11029 (1, 13), 11024 (1, 14), 11062 (1, 12), 11016 (1, 10), 11052 (1, 13), 11069 (1), 11006 (17), 6277 (1, 11), 6275 (1, 7), 6286 (1, 9), 1672/3471 (1, 9), 13867/3482 (1, 31), 11056 (1, 11), PHM917 (1, 3), 1807/3463 (1, 25), 26022/14518 (1,2), 9074 (1, 20), PHM927 (1, 6), PHM926 (1, 8), PHM929 (1,9), 11001 (1,8), 0994/3457 (1,23), 11026 (1,16), PHM935B (21, 32), last bleed only: 11011, 6278, 11003, 6285, PHM930, 11056. Seroconversion panels tested for HPgV-2 RNA: 6222, 6224, 6225, 6226, 6227, 6228, 9041, 9045, 9047, and 9054.



Supplemental Figure 1: Slot blot of HPgV-2 RNA positive samples. HPgV-2 RNA positive samples were tested for reactivity to NS4AB, HPgV-2 E2, or HPgV-1 E2 by slot blot.

A

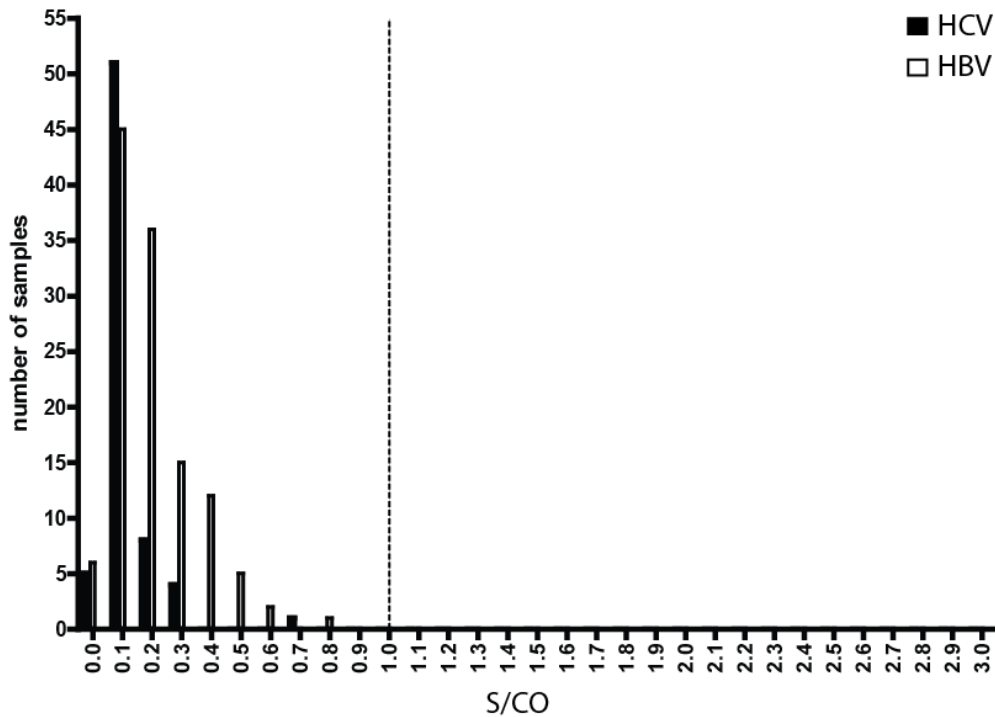
	1850	1860	1870	1880	1890	1900	1910	1920	
HPgV-2	-----S VEVR -----PAGVTRPDATDETAAY AQR LYQACADSGIFASL QGTASAALGKLA DASR								1889
HPgV-1	VVVTDWDVKGGGNPLYRNGDQATPQ FVVQ VPVVDHRPGGESAPSDAKTVTDAAVAIQVNCDSVMTLSIGEVLALAQAKTAEAYT								1630
5-1-1 (HCV)	-----IIPDREVLYREFDEMEEC SQHL PYIEQGMMLAEQ FKQ KALGLL								43

B

	10	20	30	40	50	60	70	80	
HPgV-2 E2	YKHQSESYLKYCTITNTSTSMNCDCPFGTTRNTESRFSI P RFCPVKINSSTFICSWG SWWFAENITR PYT-----DV								74
HPgV-1 E2	--GAPASVLGSRPFEAGLTWQSCSRNSGSRVPTGERVWERNVTLLDCPN GPVWV VPALCQAIGWDPITHW----SH								74
HCV E2	--HVTGGNAG--RTTAGLVGLTPGAKQNIQLINTNGSWHINSTALNCNESLN-TGWLAGLFYQHKFN SSG CPERLASCR								75
HPgV-2 E2	GMPPAPISALCYIYSNN-----DPPFWYHNT-----TIIPQNCRNSTVDPTTAPCRD-----KWGN--ATACI								130
HPgV-1 E2	GQNQWPLSCPQFVYGA VS VTCVWGSVSWFASTGGRDSKVDVWVSLVPVGSASCTIAALGSSDRDTVV EL SEWGIP-CATCI								153
HCV E2	RLTDFAGWGPISYANGSGLDE-RPYCWHYPPR PC GVPAKSVCGPVYCF T PSV VV GTDRSG-APTYSWGAN TD VFV								153
HPgV-2 E2	LDRRSRFCGDCYGGCFYTN GS HDRSWDR--CGIG--YRDGLIEFVQLGQIRPNISNTTIEL---LAGASLVIASGLR PG F								203
HPgV-1 E2	LDRRPASCGTCVRDCW PE TGSVRFPPHR--CGAGPRLTRDLEAVPFVNR TT PF T IRG PL GN---QGRGN P VRS PL GF G SY								228
HCV E2	LN N TR P PLGNWFGCTW M NSTG F TKVCGAPP C VIGVGN N TL C PTDCFRKH E ATY S RCG S GPW I TPRC M VDY P Y R LW H Y								233
HPgV-2 E2	GCSRAHG V VHCYRCPSYRDLEQ F GPGLGKWV LP GE F VP EL CIN P QWARR G FRMS N PL S LL Q T F VED I FL A PF C N T PG								283
HPgV-1 E2	TMTKIRDSLHLVKC PT ----AIE P PT G T F GF P GPV PL NC ML LG T EV S VL G G A G---LTGG F Y E PL V RR--C S EL M G								299
HCV E2	PCTIN Y TI F K V RM Y V G G----V E HR L E A C N W T R G ER C DL D R D RS E LS P LL S TT Q W Q V L PC S FT T L P ALS-T G L I H L								307
HPgV-2 E2	RVRVC N NT A F Y PR G GG F V Q LIG D V Q LT P NT								314
HPgV-1 E2	R-R-----NPVC P GF A W L S								312
HCV E2	HQ N IV D V Q Y L Y G VS S IAS W AI K W E Y V V L L F LL L ADA								344

Supplemental Figure 2

Supplemental Figure 2: A. Alignment of HPgV-2 peptide 16 sequence with corresponding region in HPgV-1 and HCV antigen 5-1-1. Peptide 16 sequence is highlighted. B. Alignment of HPgV-2, HPgV-1, and HCV E2.



Supplemental Figure 3: S/CO values for testing HCV and HBV seroconversion panels for anti-E2.

The following HCV and HBV seroconversion panels were tested: [panel number (bleed number)]: HCV: 100071 (1, 7), 10043 (1, 10), 913 (1, 4), 914 (1, 9), 919 (1, 7), 921 (1, 11), 922 (1, 6), 6224 (1, 6) 6229 (1, 8), 9044 (1, 6), 9047 (1, 10), 9054 (1, 10), 9058 (1, 5), 10025 (1, 11), 10041 (1, 3), 10165 (1, 9), 9055 (1, 11), 10017 (1, 16), 10002 (1, 7), 10004 (1, 6), 10008 (1, 10), 10011 (1, 13), 10020 (1, 13), 10023 (1, 21), 10029 (1, 16), 1051 (1, 14), 9054 (1, 8), 10016 (1, 12), last bleed only: 6222, 6227, 9041, 6216, 6213, 6225, 6228, 10026, 10062, 10021, 10003, 915, 6226, 10000. HBV: 6272 (1, 26), 26982/14399 (1, 25), 11007 (1, 14) 43527/3453 (1, 26), PHM935A (1, 20), 11009 (1, 23), 1808 (1, 21), 11028 (1, 10), 1002 (1, 6), 6282 (1, 14), 11031 (1, 16), 11012 (1, 6), 9279 (1, 7), 11005 (1, 14), 6271 (5), PHM925 (1, 5), 6284 (1, 19), 6274 (1, 7), 6273 (1, 6), 11017 (1, 14), 11000(1, 9), PHM (928 (1, 7), PHM912 (1, 9), PHM924 (1, 5), PHM908 (1, 8), PHM918 (1, 3), PHM904 (1, 3), PHM933(2, 6), PHM906(1, 5), PHM934 (1,6), 11014 (1(12), 11027 (1, 14), 6281 (1, 12), 6278 (1, 9), 6290 (1, 12), 11008 (1, 18), 11059 (1, 9), 11013 (1, 35), 11029 (1, 13), 11024 (1, 14), 11062 (1, 12), 11016 (1, 10), 11052 (1, 13), 11069 (1), 11006 (17), 6277 (1, 11), 6275 (1, 7), 6286 (1, 9), 1672/3471 (1, 9), 13867/3482 (1, 31), 11056 (1, 11), PHM917 (1, 3), 1807/3463 (1, 25), 26022/14518 (1,2), 9074 (1, 20), PHM927 (1, 6), PHM926 (1, 8), PHM929 (1,9), 11001 (1,8), 0994/3457 (1,23), 11026 (1,16), PHM935B (21, 32), last bleed only: 11011, 6278, 11003, 6285, PHM930, 11056. Seroconversion panels tested for HPgV-2 RNA: 6222, 6224, 6225, 6226, 6227, 6228, 9041, 9045, 9047, and 9054.